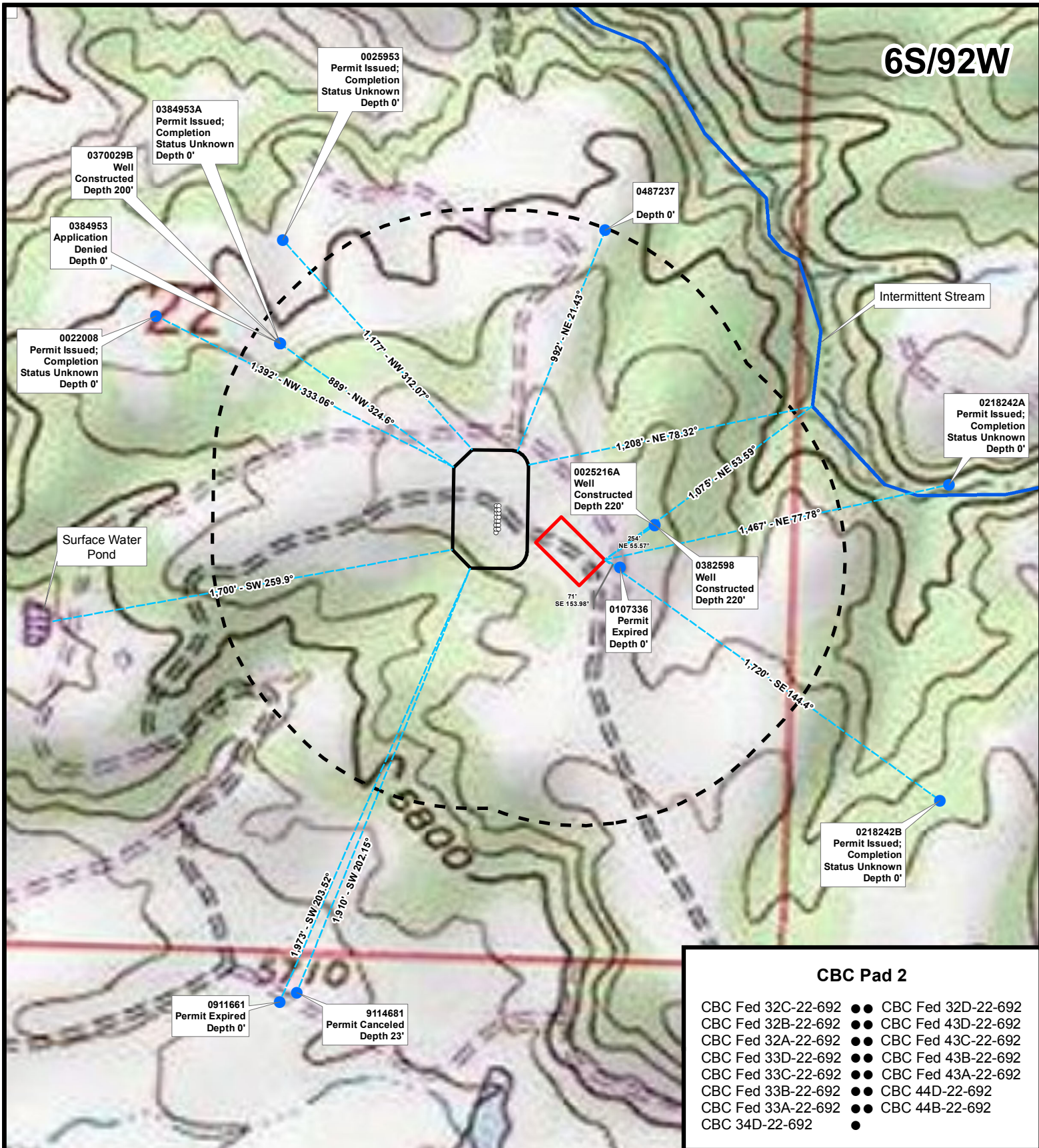


6S/92W



CBC Pad 2

CBC Fed 32C-22-692	●	CBC Fed 32D-22-692
CBC Fed 32B-22-692	●	CBC Fed 43D-22-692
CBC Fed 32A-22-692	●	CBC Fed 43C-22-692
CBC Fed 33D-22-692	●	CBC Fed 43B-22-692
CBC Fed 33C-22-692	●	CBC Fed 43A-22-692
CBC Fed 33B-22-692	●	CBC 44D-22-692
CBC Fed 33A-22-692	●	CBC 44B-22-692
CBC 34D-22-692	●	

Hydrology Map

CBC Pad 2
NESE, Section 22, T6S R92W
Garfield County, Colorado

0 125 250 500
Feet



Wells

- Water Wells
- Proposed O&G SH Location

○ 1000' Buffer

— Stream / River

— Canal / Ditch

