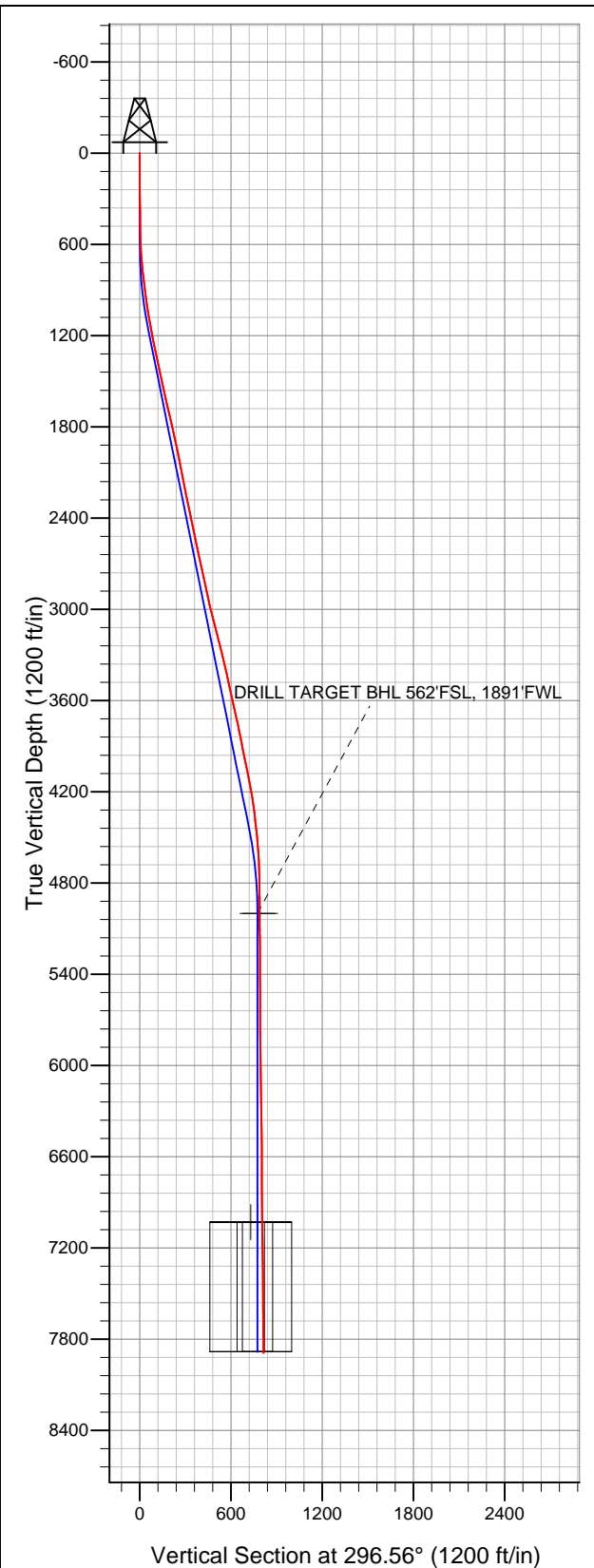


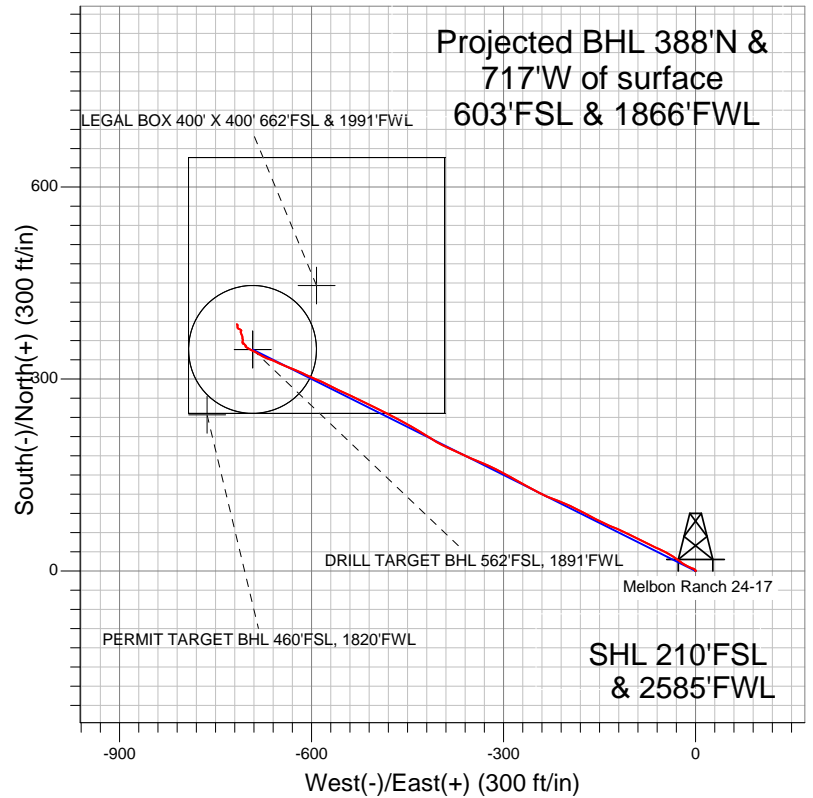
Well Name: Melbon Ranch 24-17

Surface Location: Melbon Ranch 2-8-17 Pad Sec.17-T2N-R65W
North American Datum 1983 US State Plane 1983Colorado Northern Zone
Ground Elevation: 4918.0

+N/-S	+E/-W	Northing	Easting	Latitude	Longitude	Slot
0.0	0.0	1291974.04	3226993.67	40.132010	-104.688170	
		Original Well Elev	WELL @ 4930.0ft (Original Well Elev)			



EnCana Oil & Gas Weld County CO



LEGEND

- Survey #1
- ◇ Melbon Ranch 24-17, Wellbore #1, Plan #1 (3-15-12) R V0
- Wellbore #1

Final Survey Plot

Projected Final Survey -
7970'MD & 7890'TVD @ 815'VS
0.60 deg Inc 324.90 deg AZ

Project: SEC.17-T2N-R65W
Site: Melbon Ranch 2-8-17 Pad Sec.17-T2N-R65W
Well: Melbon Ranch 24-17
Plan: Wellbore #1



EnCana Oil & Gas Weld County CO

SEC.17-T2N-R65W

Melbon Ranch 2-8-17 Pad Sec.17-T2N-R65W

Melbon Ranch 24-17

Wellbore #1

Survey: Survey #1

Standard Survey Report

26 March, 2012

Company:	EnCana Oil & Gas Weld County CO	Local Co-ordinate Reference:	Well Melbon Ranch 24-17
Project:	SEC.17-T2N-R65W	TVD Reference:	WELL @ 4930.0ft (Original Well Elev)
Site:	Melbon Ranch 2-8-17 Pad Sec.17-T2N-R65W	MD Reference:	WELL @ 4930.0ft (Original Well Elev)
Well:	Melbon Ranch 24-17	North Reference:	True
Wellbore:	Wellbore #1	Survey Calculation Method:	Minimum Curvature
Design:	Wellbore #1	Database:	Landmark

Project	SEC.17-T2N-R65W, Weld County, Colorado		
Map System:	US State Plane 1983	System Datum:	Mean Sea Level
Geo Datum:	North American Datum 1983		Using Well Reference Point
Map Zone:	Colorado Northern Zone		Using geodetic scale factor

Site		Melbon Ranch 2-8-17 Pad Sec.17-T2N-R65W			
Site Position:		Northing:	1,291,973.98 ft	Latitude:	40.132010
From:	Lat/Long	Easting:	3,226,985.28 ft	Longitude:	-104.688200
Position Uncertainty:	0.0 ft	Slot Radius:	"	Grid Convergence:	0.52 °

Well	Melbon Ranch 24-17				
Well Position	+N/-S	0.0 ft	Northing:	1,291,974.04 ft	Latitude: 40.132010
	+E/-W	0.0 ft	Easting:	3,226,993.67 ft	Longitude: -104.688170
Position Uncertainty		0.0 ft	Wellhead Elevation:	ft	Ground Level: 4,918.0 ft

Wellbore	Wellbore #1				
Magnetics	Model Name	Sample Date	Declination (°)	Dip Angle (°)	Field Strength (nT)
	IGRF2010	3/15/2012	8.70	66.82	52,919

Design	Wellbore #1				
Audit Notes:					
Version:	1.0	Phase:	ACTUAL	Tie On Depth:	0.0
Vertical Section:	Depth From (TVD) (ft)	+N/-S (ft)	+E/-W (ft)	Direction (°)	
	5,000.0	0.0	0.0	296.56	

Survey Program		Date	3/26/2012		
From (ft)	To (ft)	Survey (Wellbore)	Tool Name	Description	
124.0	7,970.0	Survey #1 (Wellbore #1)	MWD	MWD - Standard	

Survey	Wellbore Data									
	Measured Depth (ft)	Inclination (°)	Azimuth (°)	Vertical Depth (ft)	+N/-S (ft)	+E/-W (ft)	Vertical Section (ft)	Dogleg Rate (°/100ft)	Build Rate (°/100ft)	Turn Rate (°/100ft)
Main Survey	0.0	0.00	0.00	0.0	0.0	0.0	0.0	0.00	0.00	0.00
	124.0	0.60	16.30	124.0	0.6	0.2	0.1	0.48	0.48	0.00
	216.0	0.10	202.80	216.0	1.0	0.3	0.2	0.76	-0.54	-188.59
	308.0	0.50	273.60	308.0	1.0	-0.1	0.6	0.52	0.43	76.96
	399.0	1.00	327.70	399.0	1.7	-1.0	1.6	0.90	0.55	59.45
	491.0	0.70	309.00	491.0	2.7	-1.8	2.8	0.44	-0.33	-20.33
	582.0	1.70	289.80	582.0	3.5	-3.5	4.7	1.17	1.10	-21.10
	675.0	4.40	292.40	674.8	5.3	-8.1	9.7	2.91	2.90	2.80
	769.0	6.30	297.90	768.4	9.1	-16.0	18.4	2.09	2.02	5.85
	824.0	6.90	305.90	823.0	12.5	-21.4	24.7	1.99	1.09	14.55
	923.0	7.10	306.10	921.3	19.6	-31.1	36.6	0.20	0.20	0.20
	1,017.0	8.60	300.20	1,014.4	26.5	-41.9	49.3	1.81	1.60	-6.28
	1,111.0	9.90	294.40	1,107.2	33.4	-55.3	64.4	1.70	1.38	-6.17

Company:	EnCana Oil & Gas Weld County CO	Local Co-ordinate Reference:	Well Melbon Ranch 24-17
Project:	SEC.17-T2N-R65W	TVD Reference:	WELL @ 4930.0ft (Original Well Elev)
Site:	Melbon Ranch 2-8-17 Pad Sec.17-T2N-R65W	MD Reference:	WELL @ 4930.0ft (Original Well Elev)
Well:	Melbon Ranch 24-17	North Reference:	True
Wellbore:	Wellbore #1	Survey Calculation Method:	Minimum Curvature
Design:	Wellbore #1	Database:	Landmark

Survey

Measured Depth (ft)	Inclination (°)	Azimuth (°)	Vertical Depth (ft)	+N/-S (ft)	+E/-W (ft)	Vertical Section (ft)	Dogleg Rate (°/100ft)	Build Rate (°/100ft)	Turn Rate (°/100ft)
1,204.0	11.30	295.50	1,198.6	40.6	-70.8	81.5	1.52	1.51	1.18
1,298.0	12.00	296.80	1,290.7	49.0	-87.9	100.5	0.80	0.74	1.38
1,392.0	12.00	296.80	1,382.6	57.8	-105.3	120.0	0.00	0.00	0.00
1,486.0	11.80	293.50	1,474.6	66.0	-122.9	139.4	0.75	-0.21	-3.51
1,579.0	12.80	293.40	1,565.5	73.9	-141.0	159.2	1.08	1.08	-0.11
1,673.0	12.80	296.30	1,657.1	82.7	-159.9	180.0	0.68	0.00	3.09
1,767.0	13.10	299.80	1,748.7	92.6	-178.5	201.1	0.89	0.32	3.72
1,860.0	12.70	295.00	1,839.4	102.1	-196.9	221.8	1.23	-0.43	-5.16
1,954.0	11.80	290.00	1,931.3	109.8	-215.3	241.7	1.48	-0.96	-5.32
2,048.0	11.30	292.90	2,023.4	116.7	-232.8	260.4	0.82	-0.53	3.09
2,141.0	11.00	297.60	2,114.6	124.3	-249.1	278.4	1.03	-0.32	5.05
2,235.0	11.70	300.70	2,206.8	133.3	-265.2	296.9	0.99	0.74	3.30
2,329.0	11.40	297.70	2,298.9	142.5	-281.6	315.6	0.71	-0.32	-3.19
2,422.0	10.80	299.60	2,390.1	151.1	-297.4	333.5	0.76	-0.65	2.04
2,516.0	12.30	296.40	2,482.2	159.9	-314.0	352.3	1.73	1.60	-3.40
2,610.0	13.10	292.10	2,573.9	168.4	-332.8	373.0	1.32	0.85	-4.57
2,703.0	12.20	293.00	2,664.7	176.2	-351.6	393.3	0.99	-0.97	0.97
2,797.0	12.40	296.20	2,756.5	184.5	-369.8	413.3	0.76	0.21	3.40
2,891.0	11.90	293.70	2,848.4	192.9	-387.8	433.1	0.77	-0.53	-2.66
2,984.0	11.90	300.70	2,939.4	201.6	-404.8	452.2	1.55	0.00	7.53
3,078.0	15.10	302.70	3,030.8	213.2	-423.4	474.1	3.44	3.40	2.13
3,172.0	14.20	300.00	3,121.7	225.5	-443.7	497.7	1.20	-0.96	-2.87
3,265.0	13.80	297.70	3,212.0	236.4	-463.4	520.2	0.74	-0.43	-2.47
3,359.0	14.20	297.10	3,303.2	246.9	-483.6	543.0	0.45	0.43	-0.64
3,452.0	12.10	295.40	3,393.7	256.2	-502.6	564.1	2.30	-2.26	-1.83
3,546.0	12.70	296.50	3,485.5	265.1	-520.7	584.3	0.69	0.64	1.17
3,640.0	12.90	294.30	3,577.2	274.0	-539.5	605.1	0.56	0.21	-2.34
3,733.0	12.10	295.10	3,668.0	282.4	-557.8	625.2	0.88	-0.86	0.86
3,827.0	12.40	297.70	3,759.9	291.3	-575.7	645.2	0.67	0.32	2.77
3,921.0	11.00	292.20	3,851.9	299.4	-592.9	664.2	1.90	-1.49	-5.85
4,014.0	10.90	295.90	3,943.2	306.6	-609.0	681.8	0.76	-0.11	3.98
4,109.0	11.60	291.50	4,036.4	314.0	-626.0	700.3	1.17	0.74	-4.63
4,202.0	12.40	294.00	4,127.4	321.5	-643.8	719.6	1.03	0.86	2.69
4,295.0	9.00	292.10	4,218.7	328.3	-659.7	736.9	3.68	-3.66	-2.04
4,389.0	7.00	293.20	4,311.8	333.3	-671.8	749.9	2.13	-2.13	1.17
4,483.0	6.60	302.10	4,405.2	338.4	-681.6	761.0	1.20	-0.43	9.47
4,576.0	5.90	294.70	4,497.6	343.3	-690.5	771.1	1.15	-0.75	-7.96
4,670.0	4.00	301.60	4,591.2	347.0	-697.7	779.2	2.11	-2.02	7.34
4,764.0	2.30	301.20	4,685.1	349.7	-702.1	784.3	1.81	-1.81	-0.43
4,857.0	0.70	71.10	4,778.1	350.8	-703.1	785.8	3.01	-1.72	139.68
4,951.0	0.60	331.30	4,872.1	351.5	-702.8	785.8	1.06	-0.11	-106.17
5,045.0	0.40	347.10	4,966.1	352.2	-703.1	786.4	0.26	-0.21	16.81
5,078.5	0.61	320.06	4,999.6	352.5	-703.3	786.7	0.92	0.62	-80.67
PERMIT TARGET BHL 460'FSL, 1820'FWL									
5,078.7	0.61	320.06	4,999.8	352.5	-703.3	786.7	0.00	0.00	0.00
DRILL TARGET BHL 562'FSL, 1891'FWL									
5,138.0	1.10	303.00	5,059.1	353.0	-704.0	787.5	0.93	0.83	-28.79
5,232.0	1.10	330.40	5,153.0	354.3	-705.2	789.2	0.55	0.00	29.15
5,326.0	0.30	304.90	5,247.0	355.2	-705.8	790.1	0.89	-0.85	-27.13
5,419.0	0.10	217.50	5,340.0	355.3	-706.1	790.4	0.34	-0.22	-93.98
5,513.0	0.70	253.70	5,434.0	355.1	-706.7	790.8	0.66	0.64	38.51
5,607.0	0.40	351.90	5,528.0	355.2	-707.3	791.5	0.91	-0.32	104.47
5,700.0	0.20	271.40	5,621.0	355.6	-707.5	791.8	0.45	-0.22	-86.56
5,794.0	0.60	315.10	5,715.0	355.9	-708.0	792.4	0.51	0.43	46.49

Company:	EnCana Oil & Gas Weld County CO	Local Co-ordinate Reference:	Well Melbon Ranch 24-17
Project:	SEC.17-T2N-R65W	TVD Reference:	WELL @ 4930.0ft (Original Well Elev)
Site:	Melbon Ranch 2-8-17 Pad Sec.17-T2N-R65W	MD Reference:	WELL @ 4930.0ft (Original Well Elev)
Well:	Melbon Ranch 24-17	North Reference:	True
Wellbore:	Wellbore #1	Survey Calculation Method:	Minimum Curvature
Design:	Wellbore #1	Database:	Landmark

Survey										
Measured Depth (ft)	Inclination (°)	Azimuth (°)	Vertical Depth (ft)	+N/-S (ft)	+E/-W (ft)	Vertical Section (ft)	Dogleg Rate (°/100ft)	Build Rate (°/100ft)	Turn Rate (°/100ft)	
5,888.0	1.00	10.60	5,809.0	357.1	-708.2	793.1	0.88	0.43	59.04	
5,981.0	1.40	12.60	5,902.0	359.0	-707.8	793.6	0.43	0.43	2.15	
6,075.0	1.20	349.70	5,996.0	361.1	-707.7	794.5	0.59	-0.21	-24.36	
6,169.0	1.40	351.70	6,090.0	363.2	-708.0	795.7	0.22	0.21	2.13	
6,262.0	1.60	357.80	6,182.9	365.6	-708.3	797.0	0.27	0.22	6.56	
6,356.0	1.20	329.60	6,276.9	367.7	-708.8	798.4	0.83	-0.43	-30.00	
6,450.0	1.30	341.90	6,370.9	369.6	-709.6	800.0	0.30	0.11	13.09	
6,544.0	1.70	334.60	6,464.8	371.9	-710.6	801.9	0.47	0.43	-7.77	
6,638.0	0.90	20.90	6,558.8	373.8	-710.9	803.0	1.34	-0.85	49.26	
6,733.0	0.70	28.00	6,653.8	375.0	-710.4	803.1	0.23	-0.21	7.47	
6,827.0	0.20	88.50	6,747.8	375.6	-709.9	802.9	0.67	-0.53	64.36	
6,921.0	0.60	329.90	6,841.8	376.0	-710.0	803.2	0.76	0.43	-126.17	
7,016.0	0.70	284.70	6,936.8	376.6	-710.8	804.2	0.53	0.11	-47.58	
7,108.5	0.80	321.11	7,029.3	377.2	-711.8	805.3	0.51	0.10	39.37	
LEGAL BOX 400' X 400' 662'FSL & 1991'FWL										
7,108.8	0.80	321.21	7,029.6	377.2	-711.8	805.3	0.51	0.25	32.30	
TARGET CIRCLE 562'FSL & 1891'FWL										
7,110.0	0.80	321.60	7,030.8	377.2	-711.8	805.3	0.51	0.25	32.15	
7,204.0	1.00	290.70	7,124.8	378.0	-713.0	806.7	0.55	0.21	-32.87	
7,298.0	0.40	283.50	7,218.8	378.4	-714.0	807.9	0.64	-0.64	-7.66	
7,393.0	0.70	295.20	7,313.8	378.7	-714.9	808.8	0.34	0.32	12.32	
7,487.0	0.80	327.40	7,407.8	379.5	-715.8	809.9	0.45	0.11	34.26	
7,581.0	0.90	3.60	7,501.8	380.8	-716.1	810.8	0.57	0.11	38.51	
7,676.0	1.10	8.20	7,596.7	382.5	-715.9	811.3	0.23	0.21	4.84	
7,770.0	0.70	356.50	7,690.7	383.9	-715.8	811.9	0.47	-0.43	-12.45	
7,864.0	0.40	309.00	7,784.7	384.7	-716.1	812.5	0.55	-0.32	-50.53	
7,925.0	0.60	324.90	7,845.7	385.1	-716.4	813.0	0.40	0.33	26.07	
7,970.0	0.60	324.90	7,890.7	385.5	-716.7	813.4	0.00	0.00	0.00	

Checked By: _____	Approved By: _____	Date: _____
-------------------	--------------------	-------------