

HALLIBURTON

BOREHOLE VOLUME
PLOT

LARAMIE ENERGY										COMPANY										LARAMIE ENERGY																			
BRUTON 30-16B										WELL										BRUTON 30-16B																			
BRUSH CREEK										FIELD										BRUSH CREEK																			
MESA										COUNTY										MESA																			
COLORADO										STATE										COLORADO																			
COMPANY										WELL										COUNTY										STATE									
BRUTON 30-16B										FIELD										MESA										COLORADO									
BRUSH CREEK										COUNTY										STATE																			
MESA										COUNTY										COLORADO																			
COLORADO										COUNTY										STATE																			
BRUTON 30-16B										WELL										COUNTY										STATE									
BRUSH CREEK										FIELD										MESA										COLORADO									
MESA										COUNTY										STATE																			
COLORADO										COUNTY										STATE																			
BRUTON 30-16B										WELL										COUNTY										STATE									
BRUSH CREEK										FIELD										MESA										COLORADO									
MESA										COUNTY										STATE																			
COLORADO										COUNTY										STATE																			
BRUTON 30-16B										WELL										COUNTY										STATE									
BRUSH CREEK										FIELD										MESA										COLORADO									
MESA										COUNTY										STATE																			
COLORADO										COUNTY										STATE																			
BRUTON 30-16B										WELL										COUNTY										STATE									
BRUSH CREEK										FIELD										MESA										COLORADO									
MESA										COUNTY										STATE																			
COLORADO										COUNTY										STATE																			
BRUTON 30-16B										WELL										COUNTY										STATE									
BRUSH CREEK										FIELD										MESA										COLORADO									
MESA										COUNTY										STATE																			
COLORADO										COUNTY										STATE																			
BRUTON 30-16B										WELL										COUNTY										STATE									
BRUSH CREEK										FIELD										MESA										COLORADO									
MESA										COUNTY										STATE																			
COLORADO										COUNTY										STATE																			
BRUTON 30-16B										WELL										COUNTY										STATE									
BRUSH CREEK										FIELD										MESA										COLORADO									
MESA										COUNTY										STATE																			
COLORADO										COUNTY										STATE																			
BRUTON 30-16B										WELL										COUNTY										STATE									
BRUSH CREEK										FIELD										MESA										COLORADO									
MESA										COUNTY										STATE																			
COLORADO										COUNTY										STATE																			
BRUTON 30-16B										WELL										COUNTY										STATE									
BRUSH CREEK										FIELD										MESA										COLORADO									
MESA										COUNTY										STATE																			
COLORADO										COUNTY										STATE																			
BRUTON 30-16B										WELL										COUNTY										STATE									
BRUSH CREEK										FIELD										MESA										COLORADO									
MESA										COUNTY										STATE																			
COLORADO										COUNTY										STATE																			
BRUTON 30-16B										WELL										COUNTY										STATE									
BRUSH CREEK										FIELD										MESA										COLORADO									
MESA										COUNTY										STATE																			
COLORADO										COUNTY										STATE																			
BRUTON 30-16B										WELL										COUNTY										STATE									
BRUSH CREEK										FIELD										MESA										COLORADO									
MESA										COUNTY										STATE																			
COLORADO										COUNTY										STATE																			
BRUTON 30-16B										WELL										COUNTY										STATE									
BRUSH CREEK										FIELD										MESA										COLORADO									
MESA										COUNTY										STATE																			
COLORADO										COUNTY										STATE																			
BRUTON 30-16B										WELL										COUNTY										STATE									
BRUSH CREEK										FIELD										MESA										COLORADO									
MESA										COUNTY										STATE																			
COLORADO										COUNTY										STATE																			
BRUTON 30-16B										WELL										COUNTY										STATE									
BRUSH CREEK										FIELD										MESA										COLORADO									
MESA										COUNTY										STATE																			
COLORADO										COUNTY										STATE																			
BRUTON 30-16B										WELL										COUNTY										STATE									
BRUSH CREEK										FIELD										MESA										COLORADO									
MESA										COUNTY										STATE																			
COLORADO										COUNTY										STATE																			
BRUTON 30-16B										WELL										COUNTY										STATE									
BRUSH CREEK										FIELD										MESA										COLORADO									
MESA										COUNTY										STATE																			
COLORADO										COUNTY										STATE																			
BRUTON 30-16B										WELL										COUNTY										STATE									
BRUSH CREEK										FIELD										MESA										COLORADO									
MESA										COUNTY										STATE																			
COLORADO										COUNTY										STATE																			
BRUTON 30-16B										WELL										COUNTY										STATE									
BRUSH CREEK										FIELD										MESA										COLORADO									
MESA										COUNTY										STATE																			
COLORADO										COUNTY										STATE																			
BRUTON 30-16B										WELL										COUNTY										STATE									
BRUSH CREEK										FIELD										MESA										COLORADO									
MESA										COUNTY										STATE																			
COLORADO										COUNTY										STATE																			
BRUTON 30-16B										WELL										COUNTY										STATE									
BRUSH CREEK										FIELD										MESA										COLORADO									
MESA										COUNTY										STATE																			
COLORADO										COUNTY										STATE																			
BRUTON 30-16B										WELL										COUNTY										STATE									
BRUSH CREEK										FIELD										MESA										COLORADO									
MESA										COUNTY										STATE																			
COLORADO										COUNTY										STATE																			
BRUTON 30-16B										WELL										COUNTY										STATE									
BRUSH CREEK										FIELD										MESA										COLORADO									
MESA										COUNTY										STATE																			
COLORADO										COUNTY										STATE																			
BRUTON 30-16B										WELL										COUNTY										STATE									
BRUSH CREEK										FIELD										MESA										COLORADO									
MESA										COUNTY										STATE																			
COLORADO										COUNTY										STATE																			
BRUTON 30-16B										WELL										COUNTY										STATE									
BRUSH CREEK										FIELD										MESA										COLORADO									
MESA										COUNTY										STATE																			
COLORADO										COUNTY										STATE																			
BRUTON 30-16B										WELL										COUNTY										STATE									
BRUSH CREEK										FIELD										MESA										COLORADO									
MESA										COUNTY										STATE																			
COLORADO										COUNTY										STATE																			
BRUTON 30-16B										WELL										COUNTY										STATE									
BRUSH CREEK										FIELD										MESA										COLORADO									
MESA										COUNTY										STATE																			
COLORADO										COUNTY										STATE																			
BRUTON 30-16B										WELL										COUNTY										STATE									
BRUSH CREEK										FIELD										MESA										COLORADO									
MESA										COUNTY										STATE																			
COLORADO										COUNTY										STATE																			
BRUTON 30-16B										WELL										COUNTY										STATE									
BRUSH CREEK										FIELD										MESA										COLORADO									
MESA										COUNTY										STATE																			
COLORADO										COUNTY										STATE																			
BRUTON 30-16B										WELL										COUNTY										STATE									
BRUSH CREEK										FIELD										MESA										COLORADO									
MESA										COUNTY										STATE																			
COLORADO										COUNTY										STATE																			
BRUTON 30-16B										WELL										COUNTY										STATE									
BRUSH CREEK										FIELD										MESA										COLORADO									
MESA										COUNTY										STATE																			
COLORADO										COUNTY										STATE																			
BRUTON 30-16B										WELL										COUNTY										STATE									
BRUSH CREEK										FIELD										MESA										COLORADO									
MESA										COUNTY										STATE																			
COLORADO										COUNTY										STATE																			
BRUTON 30-16B										WELL										COUNTY										STATE									
BRUSH CREEK										FIELD										MESA										COLORADO									
MESA										COUNTY										STATE																			
COLORADO										COUNTY										STATE																			
BRUTON 30-16B										WELL										COUNTY										STATE									
BRUSH CREEK										FIELD										MESA										COLORADO									
MESA										COUNTY										STATE																			
COLORADO										COUNTY										STATE																			
BRUTON 30-16B										WELL										COUNTY										STATE									
BRUSH CREEK										FIELD										MESA										COLORADO									
MESA										COUNTY										STATE																			
COLORADO										COUNTY										STATE																			
BRUTON 30-16B										WELL										COUNTY										STATE									
BRUSH CREEK										FIELD										MESA										COLORADO									
MESA										COUNTY										STATE																			
COLORADO										COUNTY										STATE																			
BRUTON 30-16B										WELL										COUNTY										STATE									
BRUSH CREEK										FIELD										MESA										COLORADO									
MESA										COUNTY										STATE																			
COLORADO										COUNTY										STATE																			
BRUTON 30-16B										WELL										COUNTY										STATE									
BRUSH CREEK										FIELD										MESA										COLORADO									
MESA										COUNTY										STATE																			
COLORADO										COUNTY										STATE																			
BRUTON 30-16B										WELL										COUNTY										STATE									
BRUSH CREEK										FIELD										MESA										COLORADO									
MESA										COUNTY										STATE																			
COLORADO										COUNTY										STATE																			
BRUTON 30-16B										WELL										COUNTY										STATE									
BRUSH CREEK										FIELD										MESA										COLORADO									
MESA										COUNTY										STATE																			
COLORADO										COUNTY										STATE																			
BRUTON 30-16B										WELL										COUNTY										STATE									
BRUSH CREEK										FIELD										MESA										COLORADO									
MESA										COUNTY										STATE																			
COLORADO										COUNTY										STATE																			
BRUTON 30-16B										WELL										COUNTY										STATE									
BRUSH CREEK										FIELD										MESA										COLORADO									
MESA										COUNTY										STATE																			
COLORADO										COUNTY										STATE																			
BRUTON 30-16B										WELL										COUNTY										STATE									
BRUSH CREEK										FIELD										MESA										COLORADO									
MESA										COUNTY										STATE																			
COLORADO										COUNTY										STATE																			
BRUTON 30-16B										WELL										COUNTY										STATE									
BRUSH CREEK										FIELD										MESA										COLORADO									
MESA										COUNTY										STATE																			
COLORADO										COUNTY										STATE																			
BRUTON 30-16B										WELL										COUNTY										STATE									
BRUSH CREEK										FIELD										MESA										COLORADO									
MESA										COUNTY										STATE																			
COLORADO										COUNTY										STATE																			
BRUTON 30-16B										WELL										COUNTY										STATE									
BRUSH CREEK										FIELD										MESA										COLORADO									
MESA										COUNTY										STATE																			
COLORADO										COUNTY										STATE																			
BRUTON 30-16B										WELL										COUNTY										STATE									
BRUSH CREEK										FIELD										MESA										COLORADO									
MESA										COUNTY										STATE																			
COLORADO										COUNTY										STATE																			
BRUTON 30-16B										WELL										COUNTY										STATE									
BRUSH CREEK										FIELD										MESA										COLORADO									
MESA										COUNTY										STATE																			
COLORADO										COUNTY										STATE																			
BRUTON 30-16B										WELL										COUNTY										STATE									
BRUSH CREEK										FIELD										MESA										COLORADO									
MESA										COUNTY										STATE																			
COLORADO										COUNTY										STATE																			
BRUTON 30-16B										WELL										COUNTY										STATE									
BRUSH CREEK										FIELD										MESA										COLORADO									
MESA										COUNTY										STATE																			
COLORADO										COUNTY										STATE																			
BRUTON 30-16B										WELL										COUNTY										STATE									
BRUSH CREEK										FIELD										MESA										COLORADO									
MESA										COUNTY										STATE																			
COLORADO										COUNTY										STATE																			
BRUTON 30-16B										WELL										COUNTY										STATE									
BRUSH CREEK										FIELD										MESA										COLORADO									
MESA										COUNTY										STATE																			
COLORADO										COUNTY										STATE																			
BRUTON 30-16B										WELL										COUNTY										STATE									
BRUSH CREEK										FIELD										MESA										COLORADO									
MESA										COUNTY										STATE																			
COLORADO										COUNTY										STATE																			
BRUTON 30-16B										WELL										COUNTY										STATE									
BRUSH CREEK										FIELD										MESA										COLORADO									
MESA										COUNTY										STATE																			
COLORADO										COUNTY										STATE																			
BRUTON 30-16B										WELL										COUNTY										STATE									
BRUSH CREEK										FIELD										MESA										COLORADO									
MESA										COUNTY										STATE																			
COLORADO										COUNTY										STATE																			
BRUTON 30-16B										WELL										COUNTY										STATE									
BRUSH CREEK										FIELD										MESA										COLORADO									
MESA										COUNTY										STATE																			
COLORADO										COUNTY										STATE																			
BRUTON 30-16B										WELL										COUNTY										STATE									
BRUSH CREEK										FIELD										MESA										COLORADO									
MESA										COUNTY										STATE																			
COLORADO										COUNTY										STATE																			
BRUTON 30-16B										WELL										COUNTY										STATE									
BRUSH CREEK										FIELD										MESA										COLORADO									
MESA										COUNTY										STATE																			
COLORADO										COUNTY										STATE																			
BRUTON 30-16B										WELL										COUNTY										STATE									
BRUSH CREEK										FIELD										MESA										COLORADO									
MESA										COUNTY										STATE																			
COLORADO										COUNTY										STATE																			
BRUTON 30-16B										WELL										COUNTY										STATE									
BRUSH CREEK										FIELD										MESA										COLORADO									
MESA										COUNTY										STATE																			
COLORADO										COUNTY										STATE																			
BRUTON 30-16B										WELL										COUNTY										STATE									
BRUSH CREEK										FIELD										MESA										COLORADO									
MESA										COUNTY										STATE																			
COLORADO										COUNTY										STATE																			
BRUTON 30-16B										WELL										COUNTY										STATE									
BRUSH CREEK										FIELD										MESA										COLORADO									
MESA										COUNTY										STATE																			
COLORADO										COUNTY										STATE																			
BRUTON 30-16B										WELL										COUNTY										STATE									
BRUSH CREEK										FIELD										MESA										COLORADO									
MESA										COUNTY										STATE																			
COLORADO										COUNTY										STATE																			
BRUTON 30-16B										WELL										COUNTY										STATE									
BRUSH CREEK										FIELD										MESA										COLORADO									
MESA										COUNTY										STATE																			
COLORADO										COUNTY										STATE																			
BRUTON 30-16B										WELL										COUNTY										STATE									
BRUSH CREEK										FIELD										MESA										COLORADO									
MESA										COUNTY										STATE																			
COLORADO										COUNTY										STATE																			
BRUTON 30-16B										WELL										COUNTY										STATE									
BRUSH CREEK										FIELD										MESA										COLORADO									
MESA										COUNTY										STATE																			
COLORADO										COUNTY										STATE																			
BRUTON 30-16B										WELL										COUNTY										STATE									
BRUSH CREEK										FIELD										MESA										COLORADO									
MESA										COUNTY										STATE																			
COLORADO										COUNTY										STATE																			
BRUTON 30-16B										WELL										COUNTY										STATE									
BRUSH CREEK										FIELD										MESA										COLORADO									

COMPANY	LARAMIE ENERGY
WELL	BRUTON 30-16B
FIELD	BRUSH CREEK
COUNTY	MESA
STATE	COLORADO

API No. 05077101010000
Location SURFACE HOLE LOCATION:
SEC 30 T9S R93W: 2497 FSL, 1784' FEL
BOTTOM HOLE LOCATION:
SEC 30 T9S R93W: 826 FSL, 653' FEL
Other Services:
RWCH
DSNT/SDLT
ACRT

Fold here

Service Ticket No.: 9130506						API Serial No.: 05077101010000						PGM Version: WL INSITE R3.4.2 (Build 2)					
CHANGE IN MUD TYPE OR ADDITIONAL SAMPLE						RESISTIVITY SCALE CHANGES											
Date	Sample No.					Type Log	Depth	Scale Up Hole				Scale Down Hole					
Depth-Driller																	
Type Fluid in Hole																	
Density	Viscosity																
Ph	Fluid Loss																
Source of Sample						RESISTIVITY EQUIPMENT DATA											
Rm @ Meas. Temp		@		@		Run No.	Tool Type & No.		Pad Type		Tool Pos.		Other				
Rmf @ Meas. Temp.		@		@		ONE	ACRT -		N/A		1.5" S.O.		N/A				
Rmc @ Meas. Temp.		@		@			E336_S042										
Source Rmf	Rmc																
Rm @ BHT		@		@													
Rmf @ BHT		@		@													
Rmc @ BHT		@		@													
EQUIPMENT DATA																	
GAMMA				ACOUSTIC				DENSITY				NEUTRON					
Run No.		ONE		Run No.				Run No.		ONE		Run No.		ONE			
Serial No.		10931260		Serial No.				Serial No.		10948155		Serial No.		11004663			
Model No.		GTET		Model No.				Model No.		SDLT-I		Model No.		DSNT-I			
Diameter		3.625"		No. of Cent.				Diameter		4.5"		Diameter		3.625"			
Detector Model No.		102-A		Spacing				Log Type		GAM-GAM		Log Type		THERM-THERM			
Type		SCINT						Source Type		Cs137		Source Type		Am241Be			
Length		8"		LSA [Y/N]				Serial No.		5116GW		Serial No.		DSN-431			
Distance to Source		10'		FWDA [Y/N]				Strength		1.5 Ci		Strength		15.0 Ci			

LOGGING DATA

GENERAL			GAMMA		ACOUSTIC			DENSITY		NEUTRON	
---------	--	--	-------	--	----------	--	--	---------	--	---------	--

GENERAL			GAMMA		ACOUSTIC		DENSITY		NEUTRON					
Run	Depth		Speed	Scale		Scale		Matrix	Scale		Matrix	Scale		Matrix
No.	From	To	ft/min	L	R	L	R		L	R		L	R	
ONE	8028'	1550'	REC	0	150				30%	-10%	2.68 g/cc	30%	-10%	SAND
ONE	1550'	100'	REC	0	150									
DIRECTIONAL INFORMATION														
Maximum Deviation @								KOP @						
Remarks: RWCH-GTET-DSNT-SDLT-ACRT RAN IN COMBINATION														
BOREHOLE RUGOSITY, TENSION PULLS AND WASHOUTS MAY AFFECT TOOL RESPONSE														
ANNULAR HOLE VOLUME CALCULATED FOR 4.5-INCH PRODUCTION CASING														
TOOLSTRING RUN SLICK PER CUSTOMER REQUEST														
CALIPER POST CALIBRATION NOT DONE DUE TO TEMPERATURE														
LATITUDE: 39.247716														
LONGITUDE: 107.808590														
TODAY'S CREW: G. HOOD, C. NOCHEBUENA & B. DAVIS														
RIG: PRECISION 706														
THANK YOU FOR CHOOSING HALLIBURTON ENERGY SERVICES, ROCK SPRINGS, WY (307) 352-8600														
HALLIBURTON DOES NOT GUARANTEE THE ACCURACY OF ANY INTERPRETATION OF THE LOG DATA, CONVERSION OF LOG DATA TO PHYSICAL ROCK PARAMETERS OR RECOMMENDATIONS WHICH MAY BE GIVEN BY HALLIBURTON PERSONNEL OR WHICH APPEAR ON THE LOG OR IN ANY OTHER FORM. ANY USER OF SUCH DATA, INTERPRETATIONS, CONVERSIONS, OR RECOMMENDATIONS AGREES THAT HALLIBURTON IS NOT RESPONSIBLE EXCEPT WHERE DUE TO GROSS NEGLIGENCE OR WILLFUL MISCONDUCT, FOR ANY LOSS, DAMAGES, OR EXPENSES RESULTING FROM THE USE THEREOF.														
HALLIBURTON														

HALLIBURTON

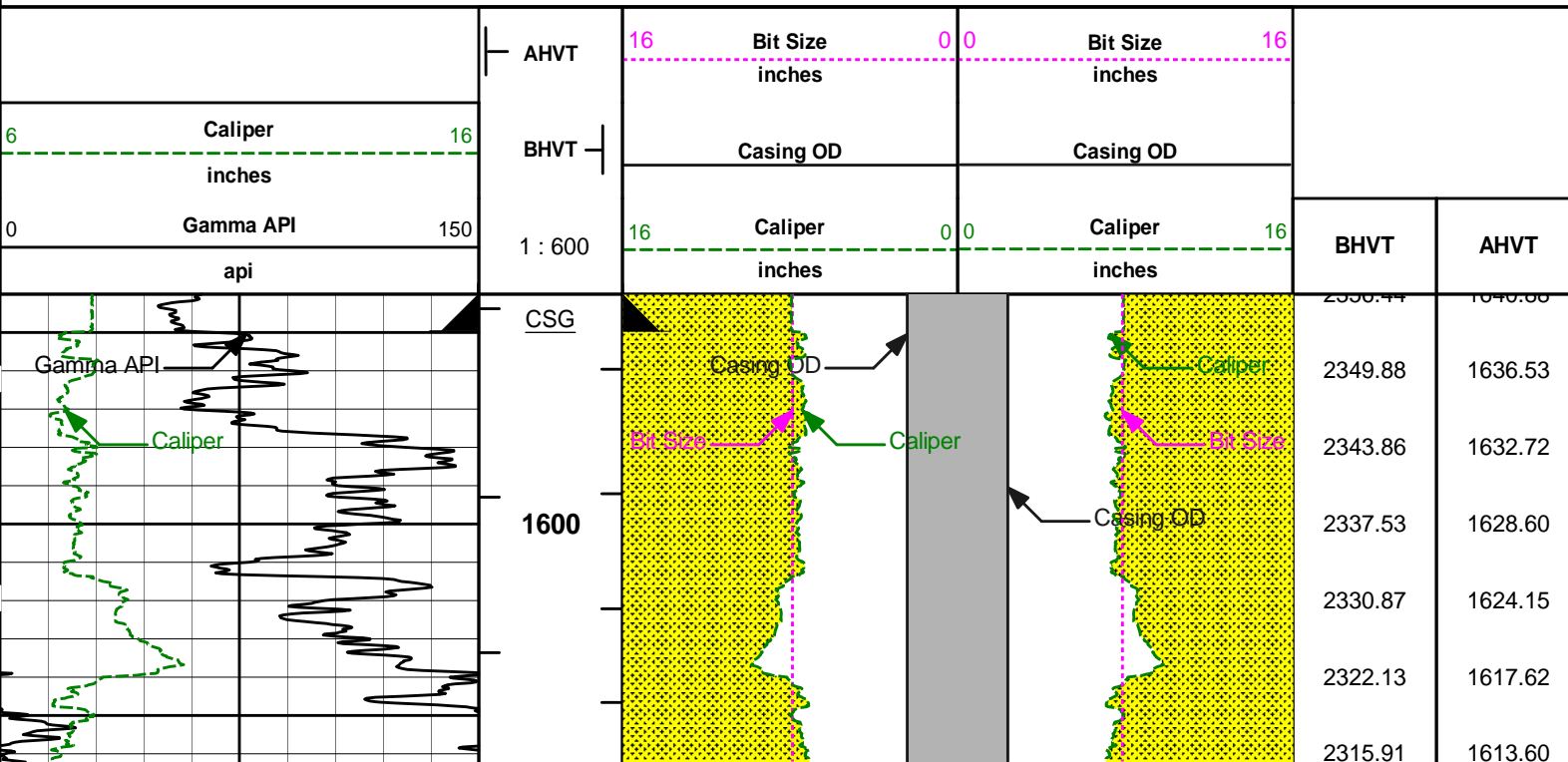
Plot Time: 17-Dec-11 00:41:42

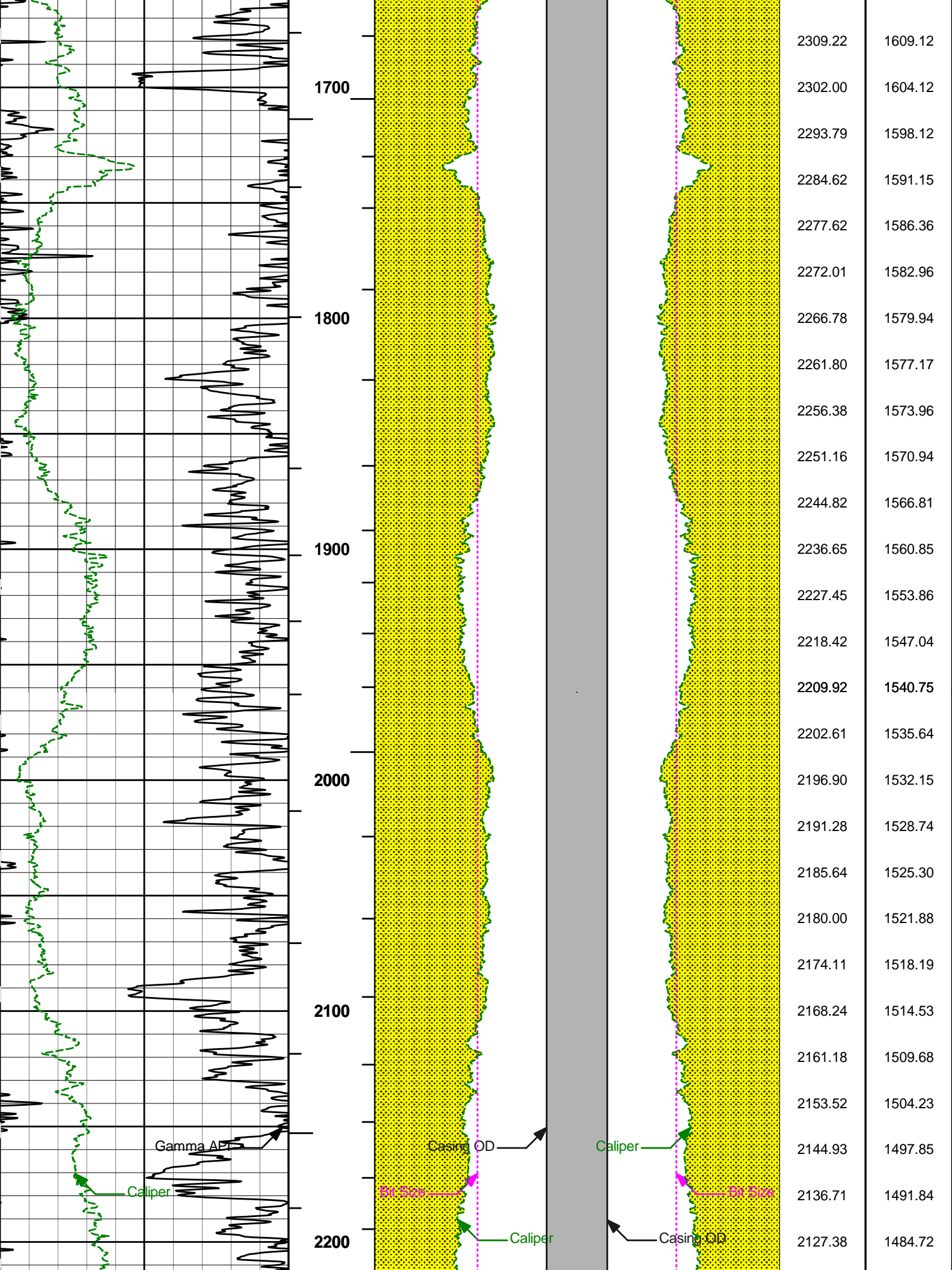
Plot Range: 1540 ft to 8042.25 ft

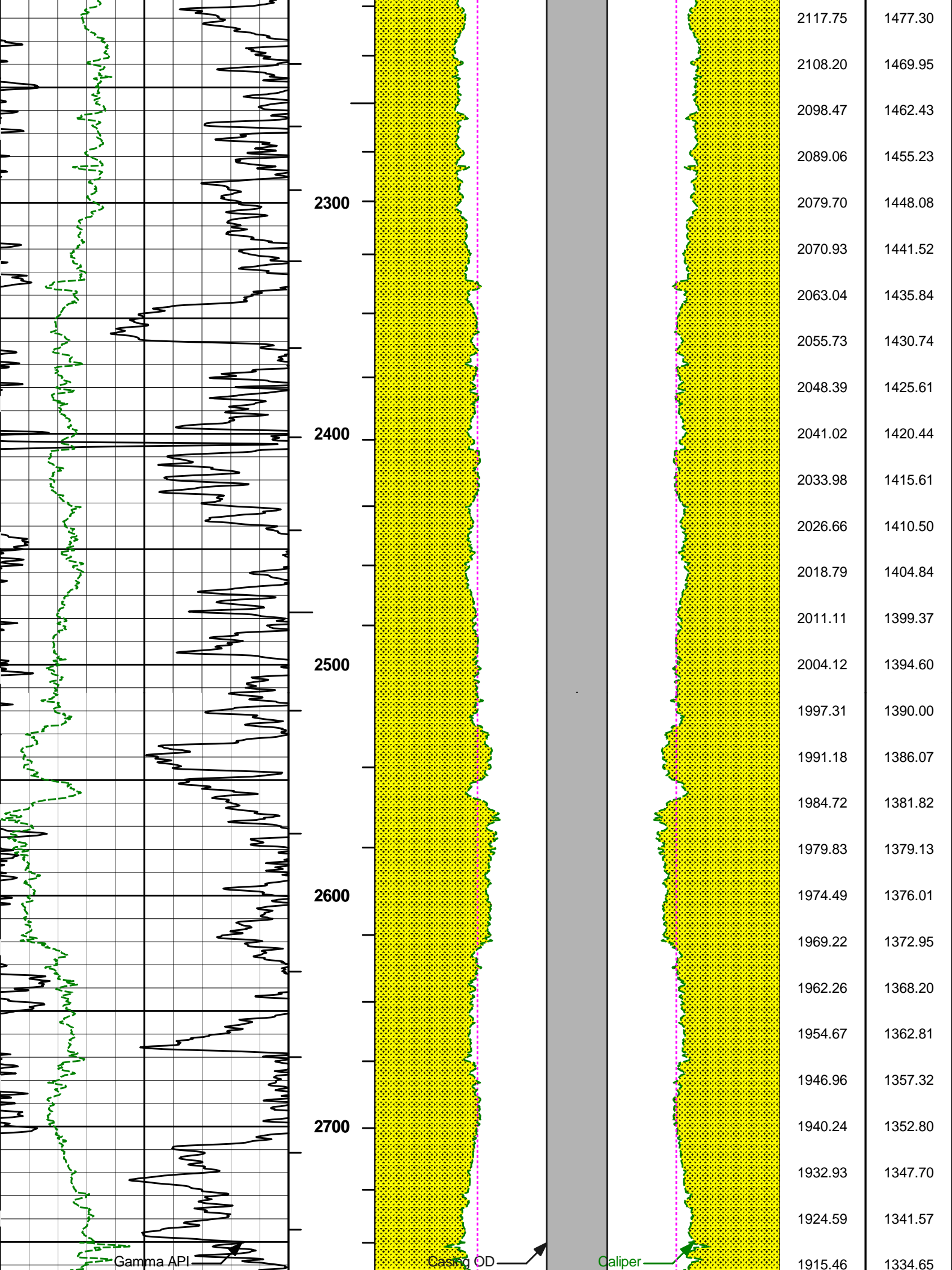
Data: LE_BRTON_30_16B\Well Based\MAIN*

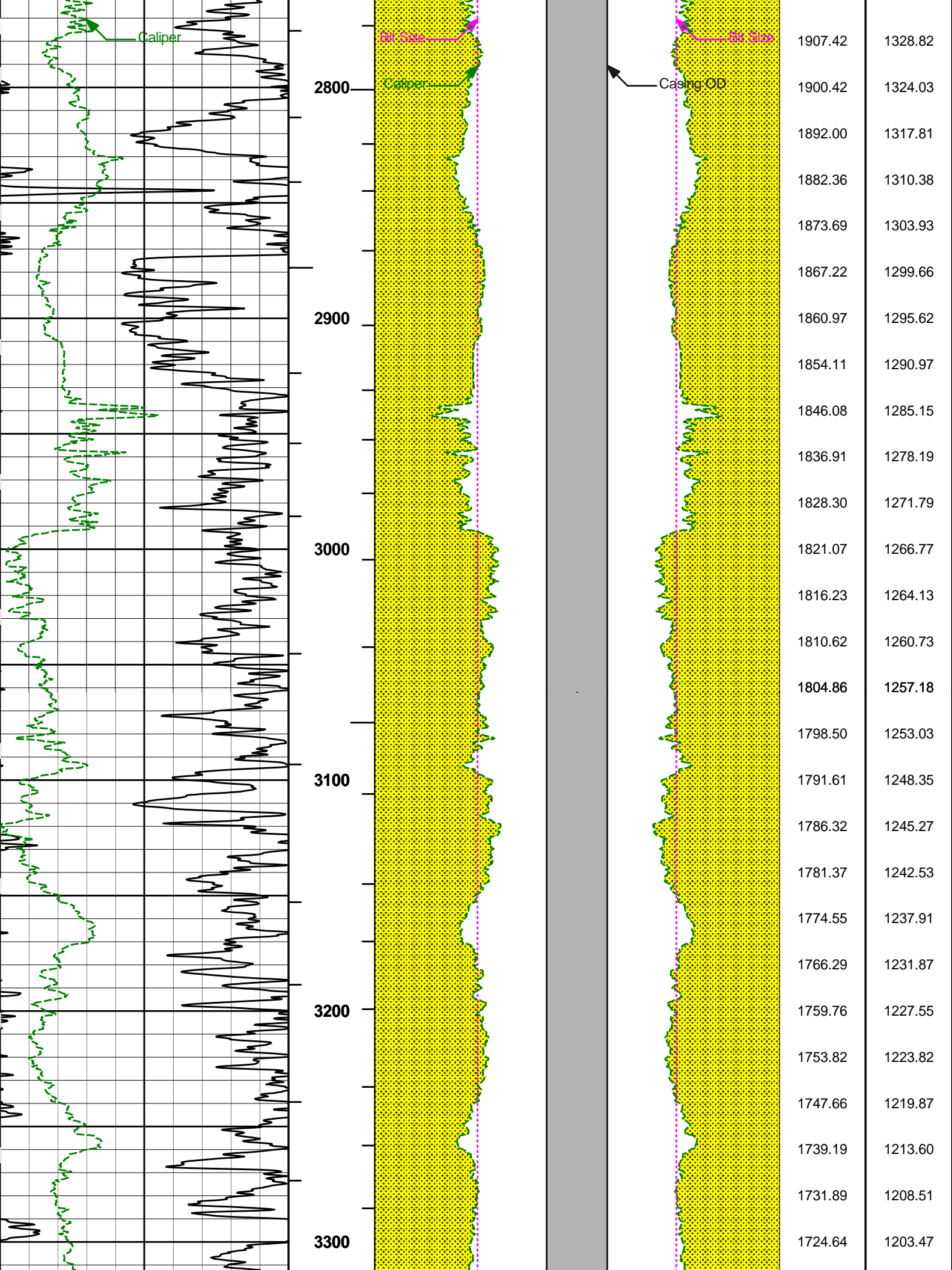
Plot File: \\BHV\IQ_BHV_SDL_RM

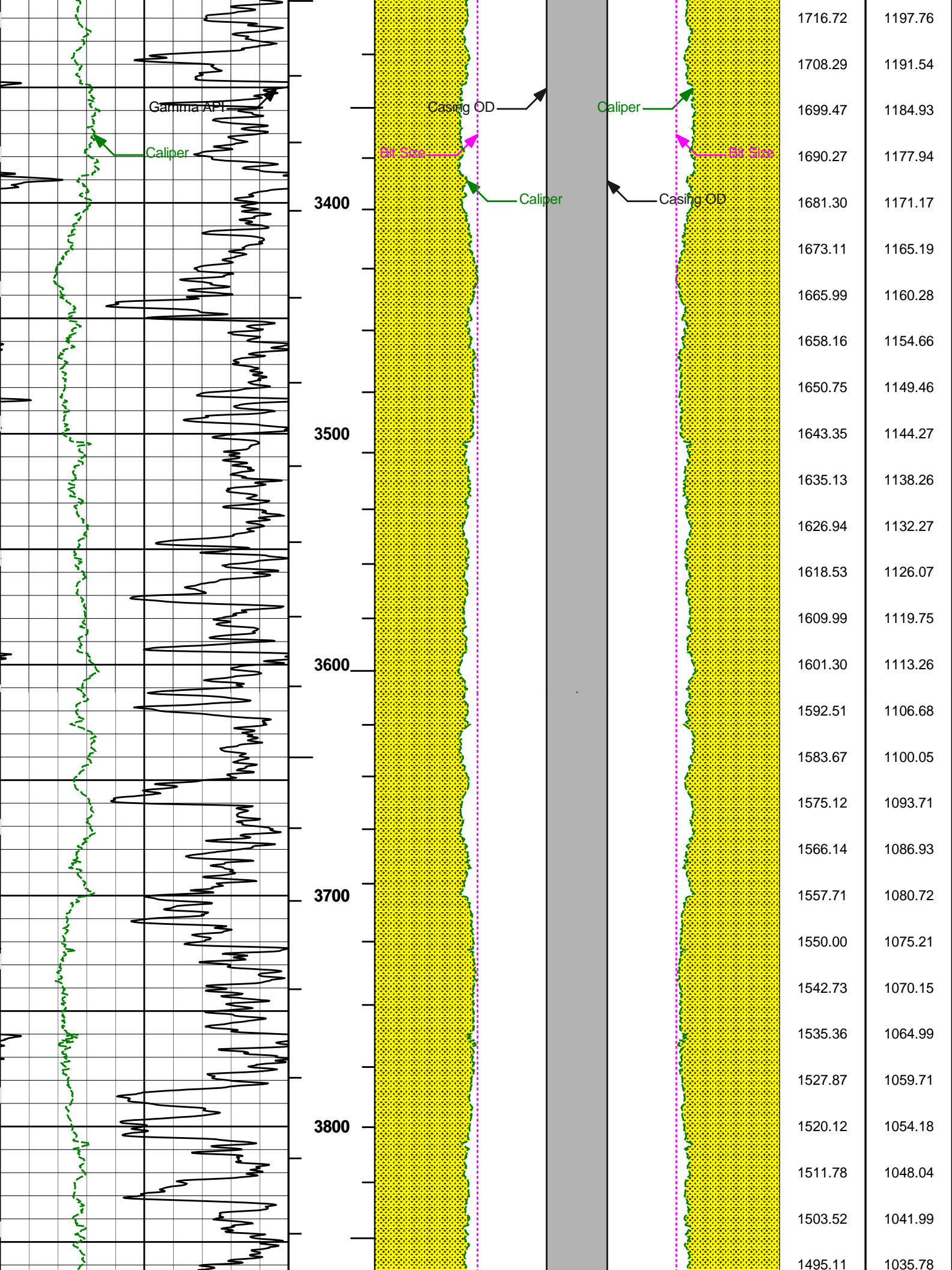
AHV USES 4.5" CASING

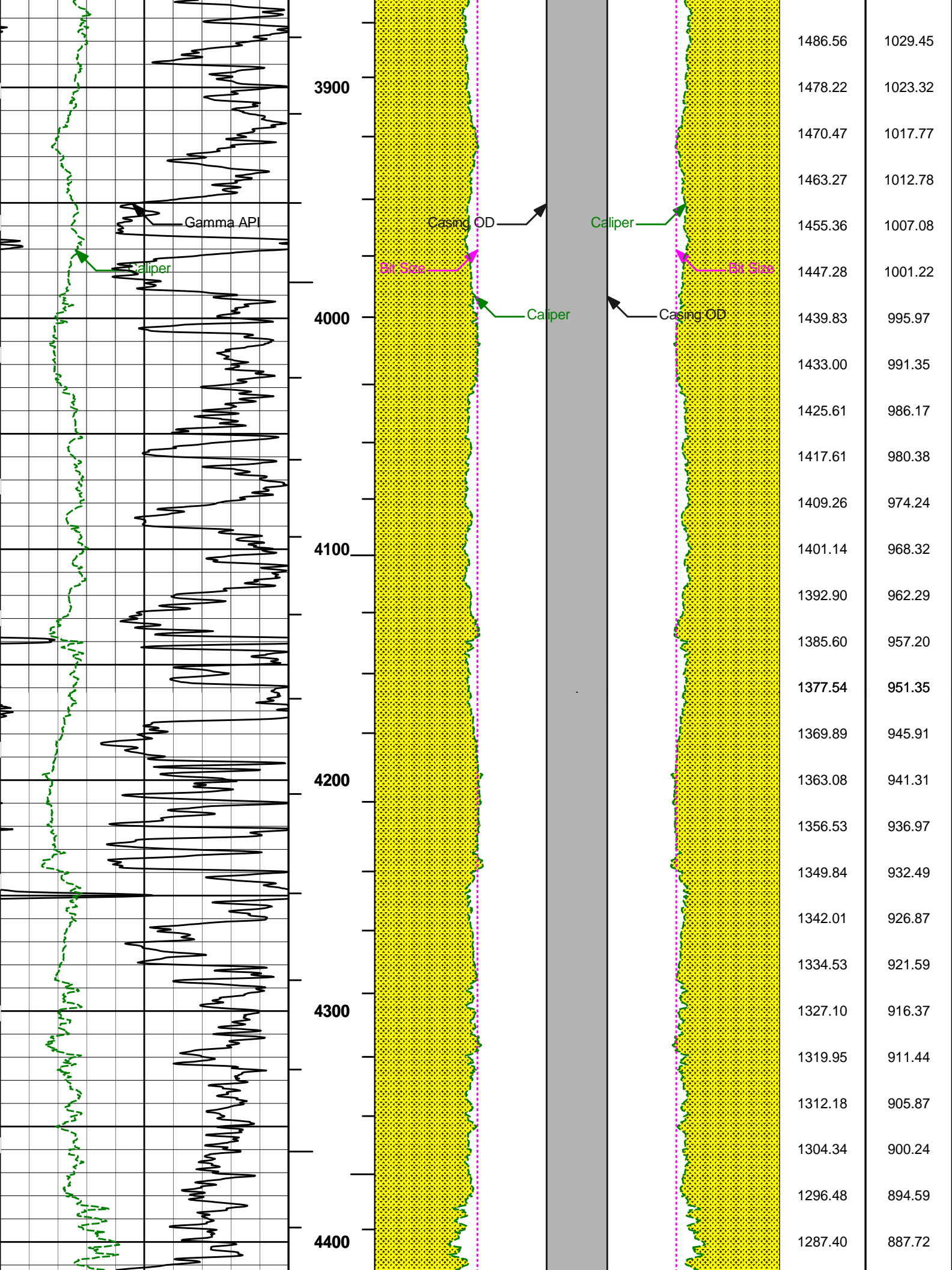


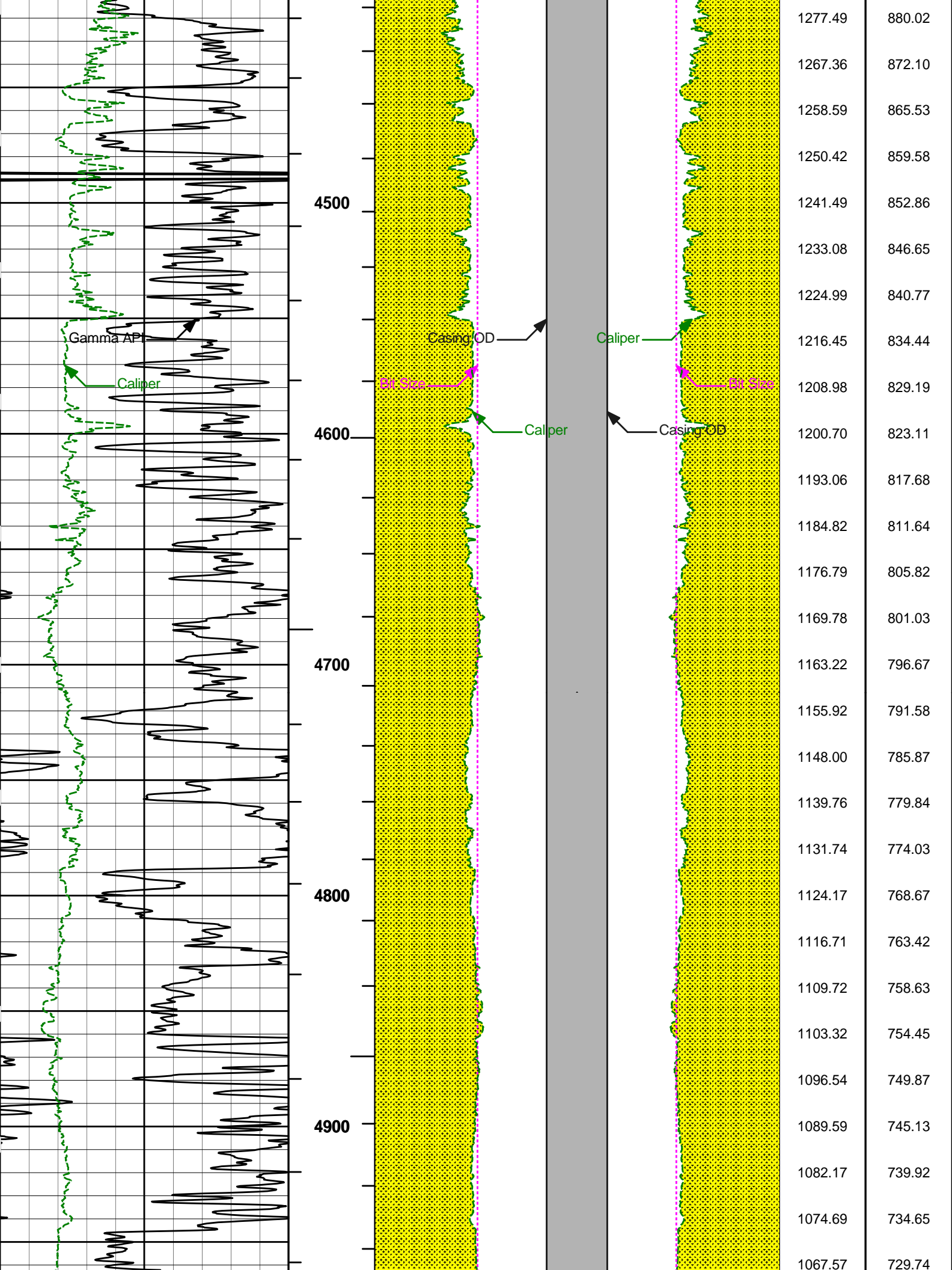


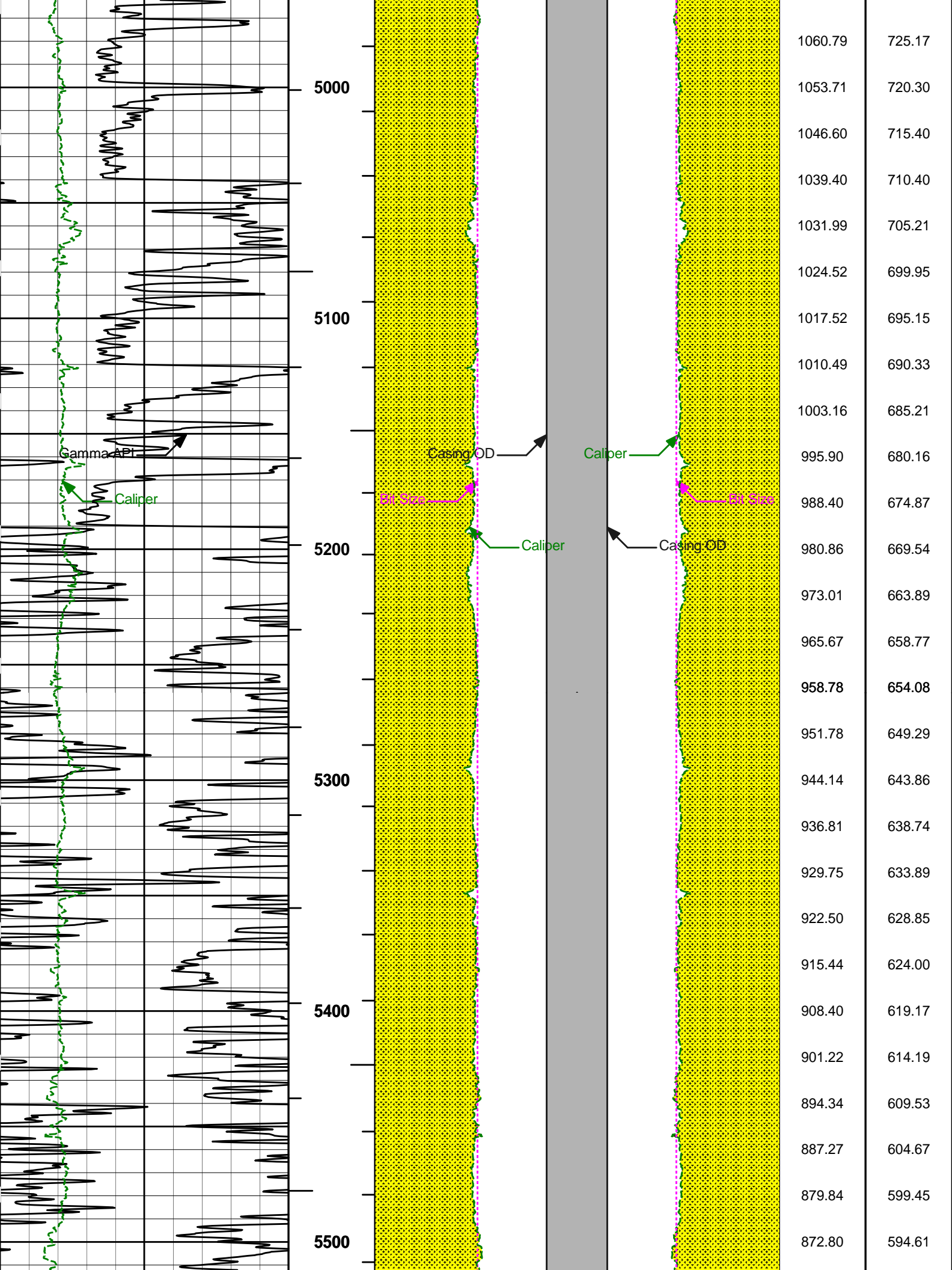


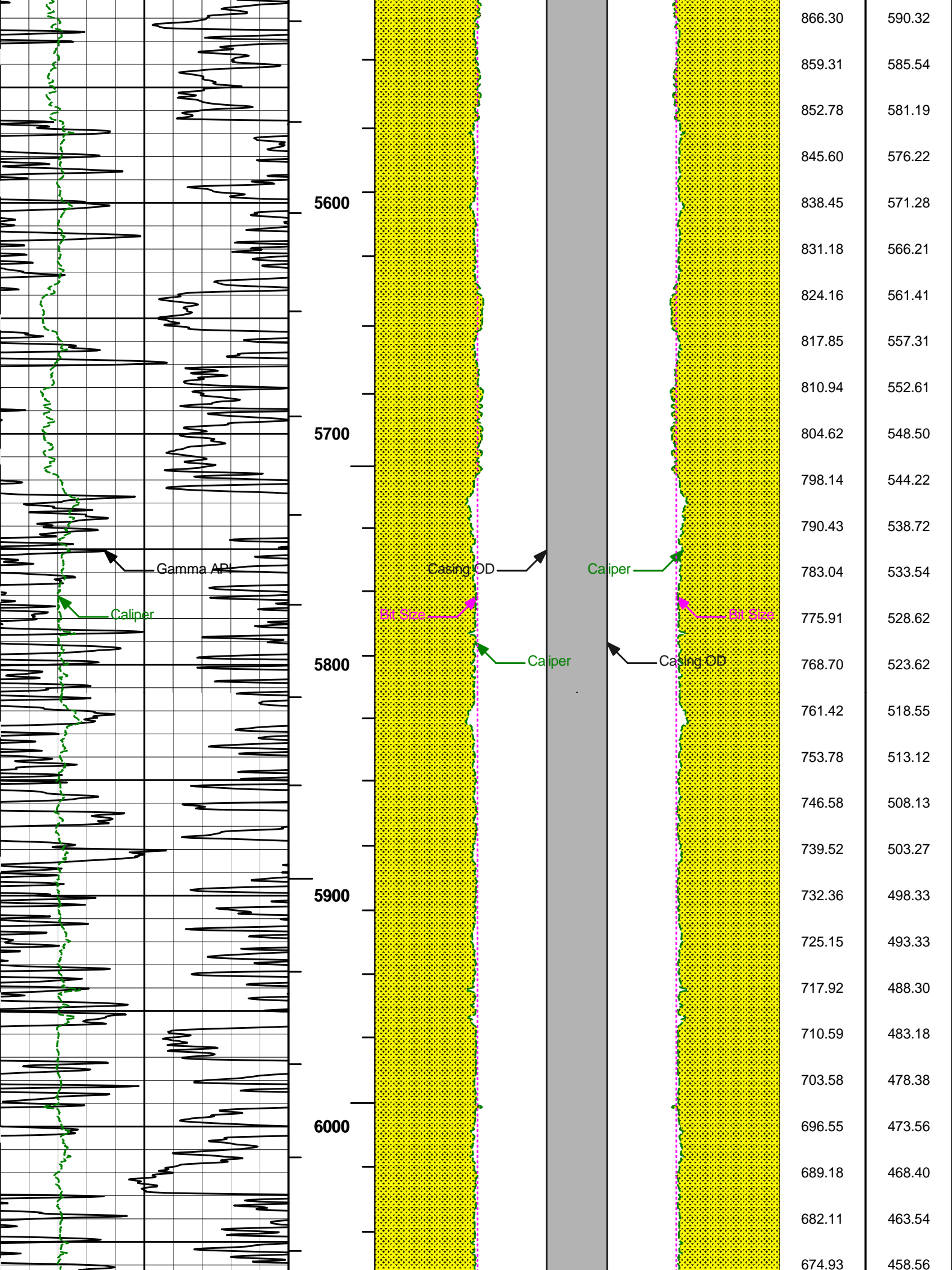


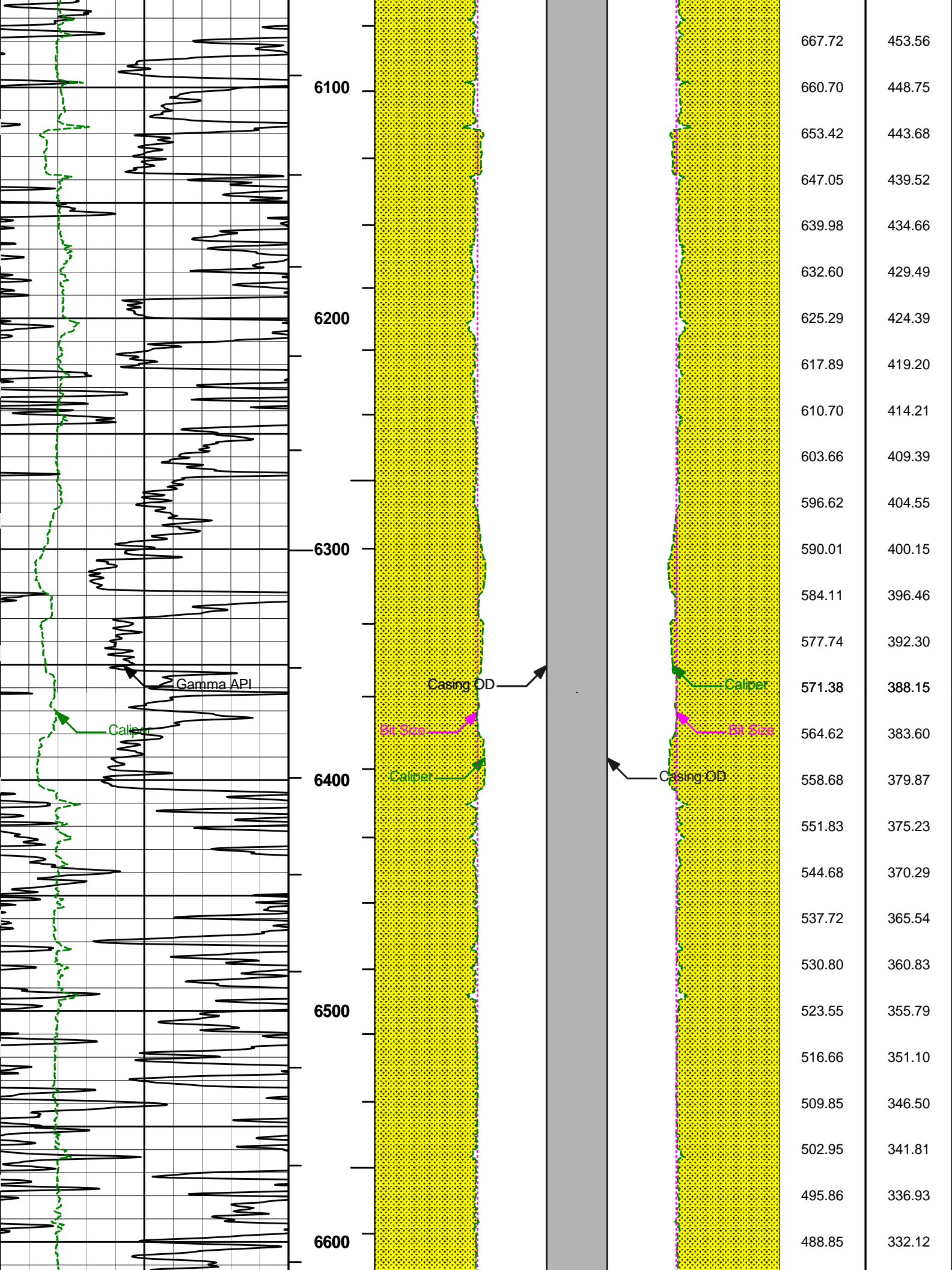


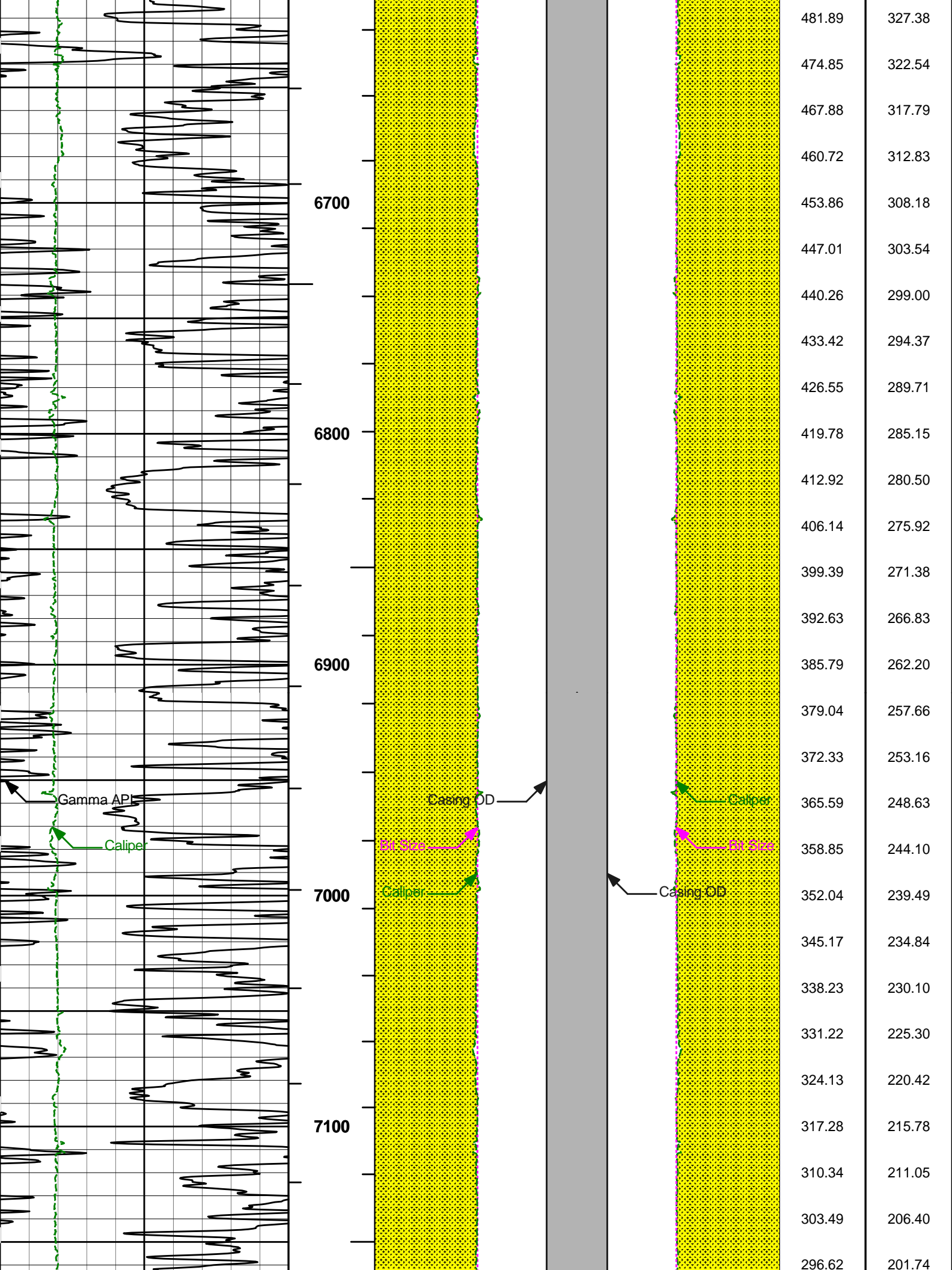


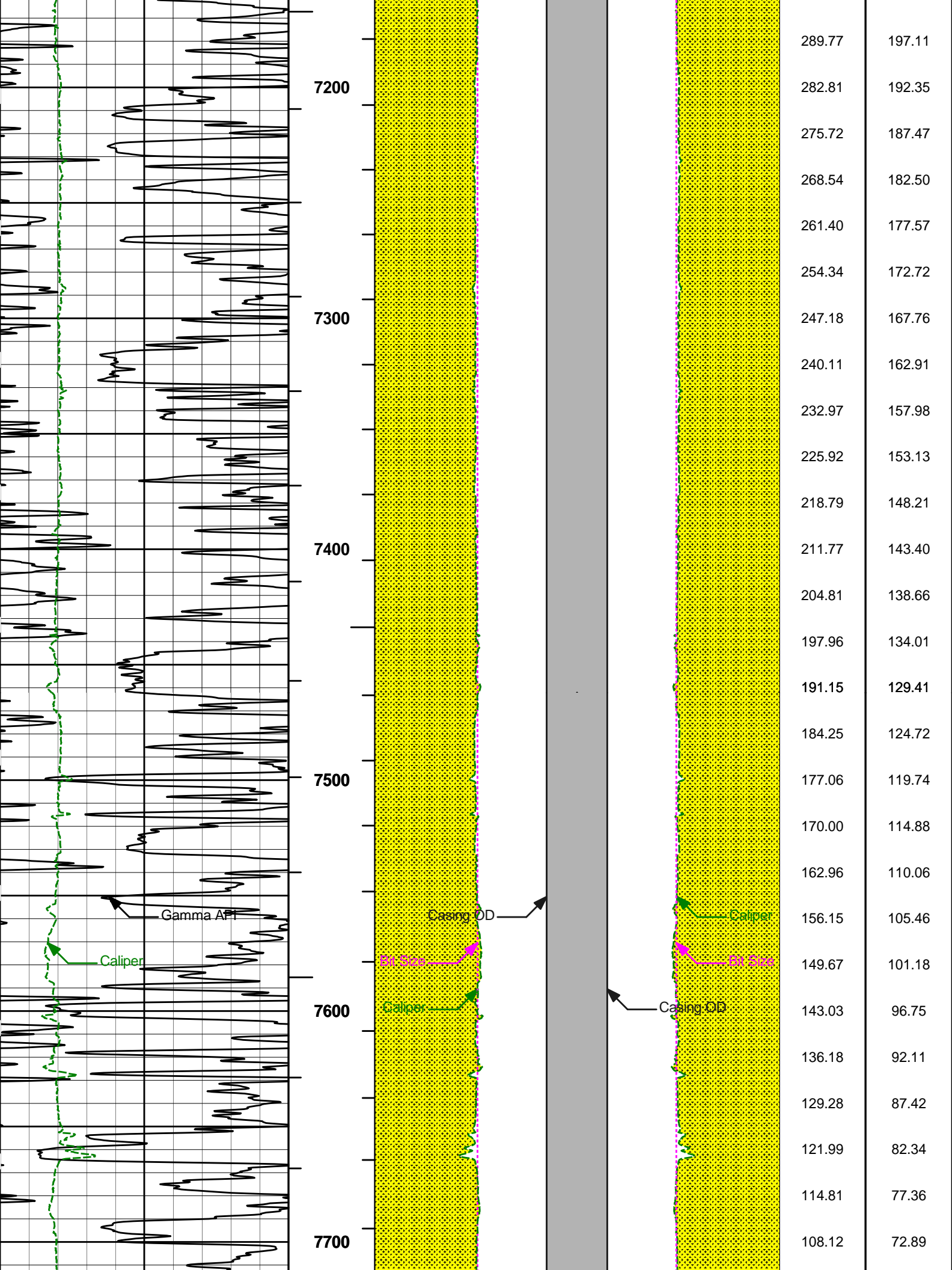


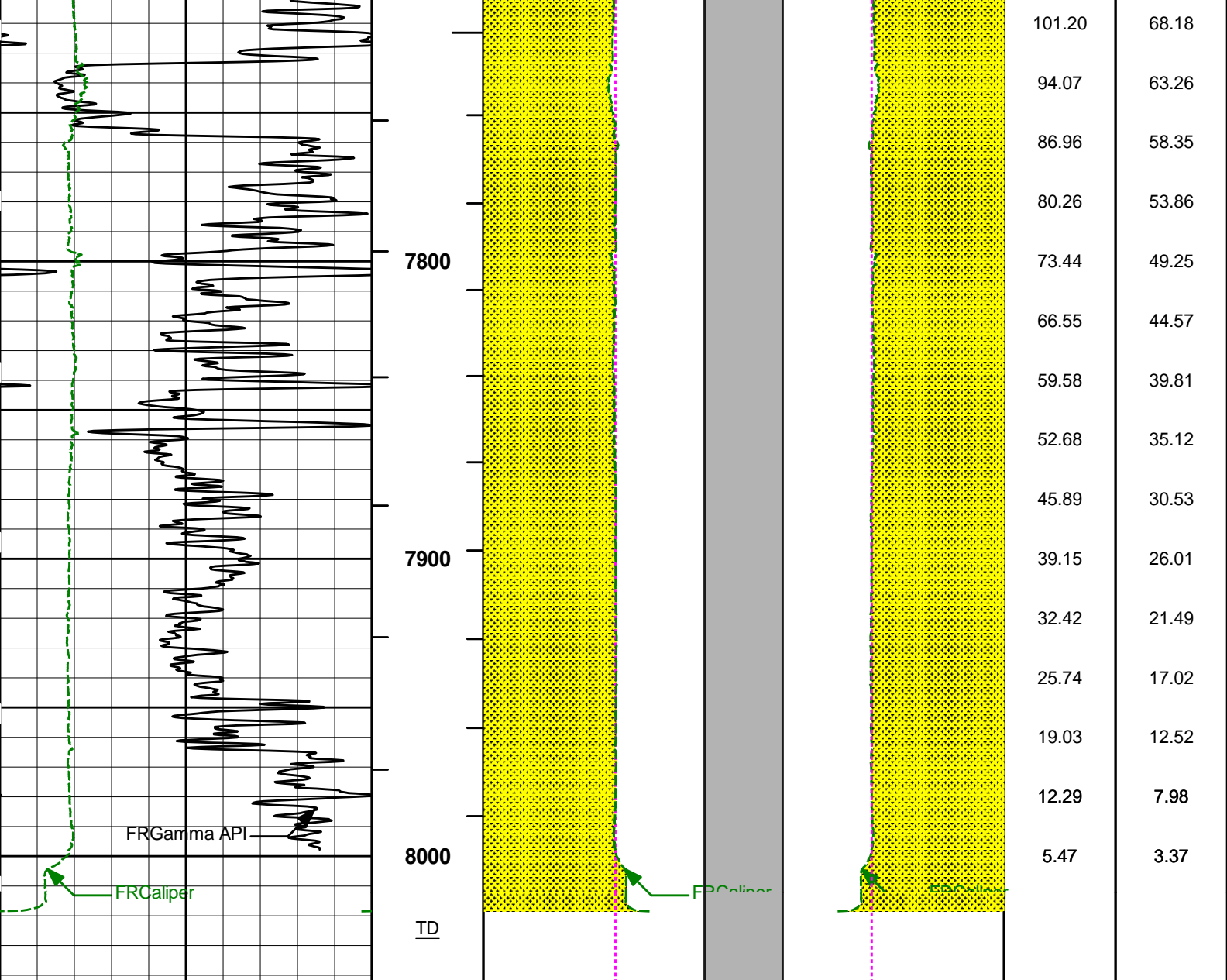












0	Gamma API	150	1 : 600	16	Caliper	0 0	Caliper	16	BHVT	AHVT
	api				inches		inches			
6	Caliper	16	BHVT		Casing OD		Casing OD			
	inches		AHVT	16	Bit Size	0 0	Bit Size	16		
					inches		inches			

HALLIBURTON Plot Time: 17-Dec-11 00:41:48
Plot Range: 1540 ft to 8042.25 ft
Data: LE_BRTON_30_16B\Well Based\MAIN*
Plot File: \\BHV\IQ_BHV_SDL_RM

AHV USES 4.5" CASING

COMPANY	LARAMIE ENERGY
WELL	BRUTON 30-16B

FIELD	BRUSH CREEK		
COUNTY	MESA	STATE	COLORADO
HALLIBURTON		BOREHOLE VOLUME PLOT	