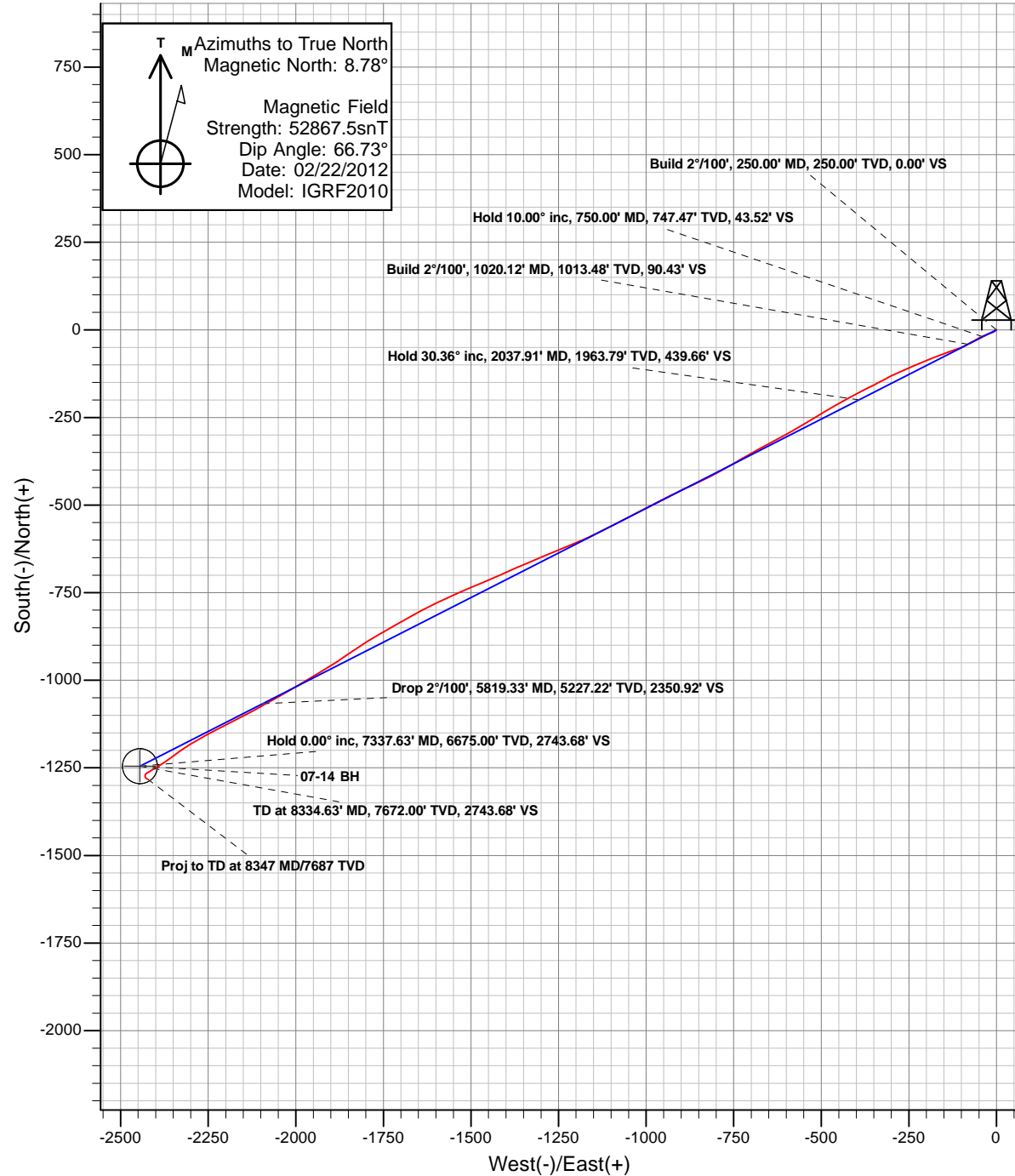
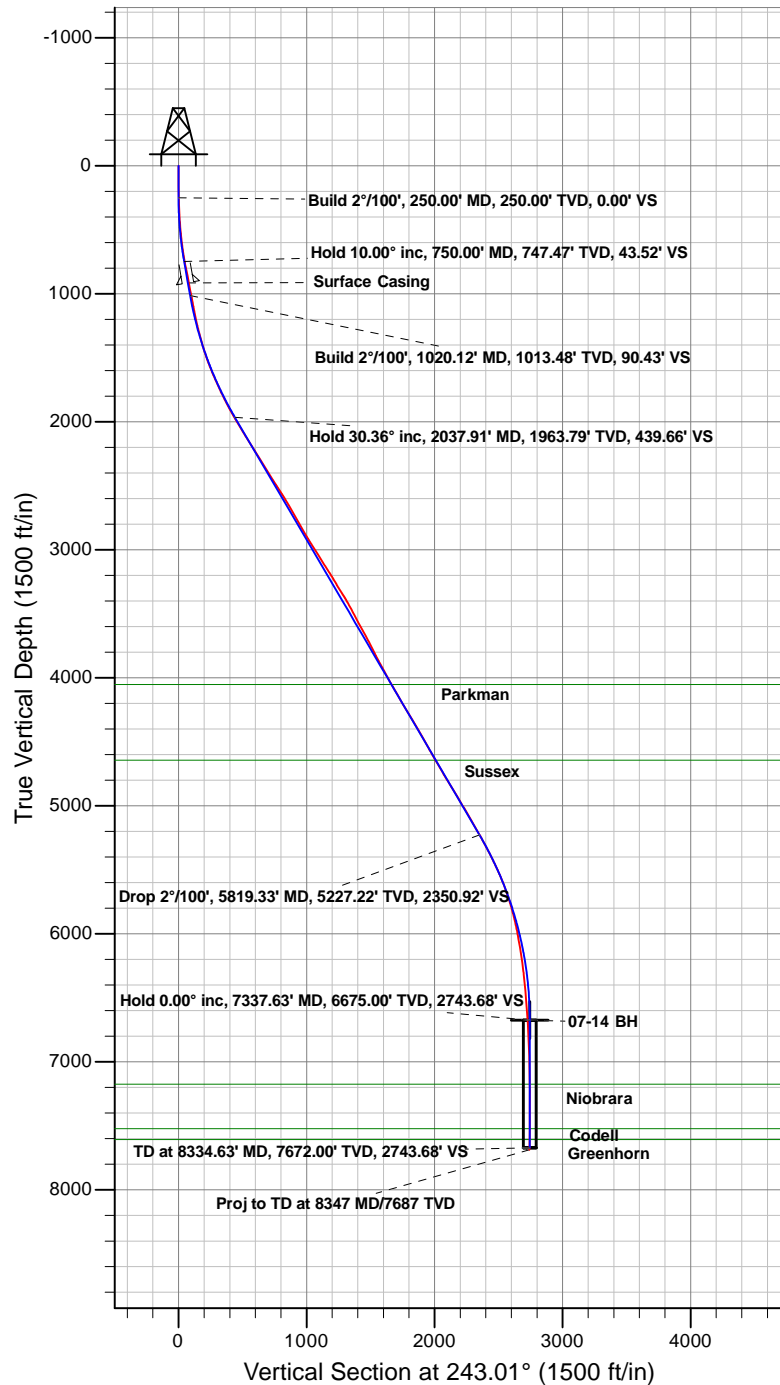




Anadarko Petroleum Corporation

Riverbend 07-14 (111414)
Plan vs Actual



Anadarko Petroleum Corporation

Riverbend

Riverbend 14 Pad

Riverbend 07-14 (111414) - Slot 07-14

07-14

Survey: 07-14

Survey Report - Geographic

12 January, 2012

Survey Report - Geographic

| | | | |
|------------------|--------------------------------|-------------------------------------|--|
| Company: | Anadarko Petroleum Corporation | Local Co-ordinate Reference: | Well Riverbend 07-14 (111414) - Slot 07-14 |
| Project: | Riverbend | TVD Reference: | KB @ 4967.00ft (Original Well Elev) |
| Site: | Riverbend 14 Pad | MD Reference: | KB @ 4967.00ft (Original Well Elev) |
| Well: | Riverbend 07-14 (111414) | North Reference: | True |
| Wellbore: | 07-14 | Survey Calculation Method: | Minimum Curvature |
| Design: | 07-14 | Database: | EDM5000 |

| | | | |
|--------------------|-------------------------------|----------------------|----------------|
| Project | Riverbend | | |
| Map System: | Universal Transverse Mercator | System Datum: | Mean Sea Level |
| Geo Datum: | NAD83 Colorado - HARN | | |
| Map Zone: | Zone 13N (108 W to 102 W) | | |

| | | | |
|------------------------------|------------------|--------------------------|--------------------|
| Site | Riverbend 14 Pad | | |
| Site Position: | | Northing: | 14,547,138.00 usft |
| From: | Lat/Long | Easting: | 1,683,122.87 usft |
| Position Uncertainty: | 0.00 ft | Slot Radius: | 13.20 in |
| | | Latitude: | 40.055934°N |
| | | Longitude: | 104.847381°W |
| | | Grid Convergence: | 0.10 ° |

| | | | |
|-----------------------------|---------------------------------------|----------------------------|-------------------------------------|
| Well | Riverbend 07-14 (111414) - Slot 07-14 | | |
| Well Position | +N/-S | 0.00 ft | Northing: 14,547,118.00 usft |
| | +E/-W | 0.00 ft | Easting: 1,683,122.96 usft |
| Position Uncertainty | 0.00 ft | Wellhead Elevation: | ft |
| | | Latitude: | 40.055879°N |
| | | Longitude: | 104.847381°W |
| | | Ground Level: | 4,952.00 ft |

| | | | |
|------------------|-------------------|--------------------|----------------------------|
| Wellbore | 07-14 | | |
| Magnetics | Model Name | Sample Date | Declination (°) |
| | IGRF2010 | 2012/02/22 | 8.79 |
| | | | Dip Angle (°) |
| | | | 66.73 |
| | | | Field Strength (nT) |
| | | | 52,867 |

| | | | |
|--------------------------|-------------------------|----------------------|----------------------|
| Design | 07-14 | | |
| Audit Notes: | | | |
| Version: | 1.0 | Phase: | ACTUAL |
| | | Tie On Depth: | 0.00 |
| Vertical Section: | Depth From (TVD) | +N/-S (ft) | +E/-W (ft) |
| | (ft) | (ft) | (ft) |
| | 0.00 | 0.00 | 0.00 |
| | | | Direction (°) |
| | | | 243.01 |

| | | | | |
|-----------------------|----------------|--------------------------|------------------|--------------------|
| Survey Program | Date | 2012/01/11 | | |
| From (ft) | To (ft) | Survey (Wellbore) | Tool Name | Description |
| 140.00 | 8,347.00 | 07-14 (07-14) | MWD | MWD - Standard |

| | | | | | | | | | |
|---|------------------------|--------------------|----------------------------|-------------------|-------------------|----------------------------|---------------------------|-----------------|------------------|
| Survey | | | | | | | | | |
| Measured Depth (ft) | Inclination (°) | Azimuth (°) | Vertical Depth (ft) | +N/-S (ft) | +E/-W (ft) | Map Northing (usft) | Map Easting (usft) | Latitude | Longitude |
| 0.00 | 0.00 | 0.00 | 0.00 | 0.00 | 0.00 | 14,547,118.00 | 1,683,122.96 | 40.055879°N | 104.847381°W |
| Doversberger Eugene #3 (VE) - Doversberger Unit A #1 (VE) - Doversberger Eugene #5 (VE) - Doversberger Eugene #4 (VE) - Doversberg | | | | | | | | | |
| 2.88 | 0.01 | 231.76 | 2.88 | 0.00 | 0.00 | 14,547,118.00 | 1,683,122.96 | 40.055879°N | 104.847381°W |
| Chikuma Harry S #2 (VE) at TD | | | | | | | | | |
| 18.23 | 0.04 | 231.76 | 18.23 | 0.00 | -0.01 | 14,547,118.00 | 1,683,122.96 | 40.055879°N | 104.847381°W |
| Harry S Chikuma #1 (VE) | | | | | | | | | |
| 25.58 | 0.06 | 231.76 | 25.58 | -0.01 | -0.01 | 14,547,117.99 | 1,683,122.95 | 40.055879°N | 104.847381°W |
| Harry S Chikuma GU B-True #1 (8096' MD) | | | | | | | | | |
| 27.45 | 0.06 | 231.76 | 27.45 | -0.01 | -0.01 | 14,547,117.99 | 1,683,122.95 | 40.055879°N | 104.847381°W |
| Mathisen Unit #2 (VE) | | | | | | | | | |
| 140.00 | 0.31 | 231.76 | 140.00 | -0.23 | -0.30 | 14,547,117.77 | 1,683,122.67 | 40.055879°N | 104.847382°W |
| 202.00 | 0.88 | 227.98 | 202.00 | -0.66 | -0.78 | 14,547,117.34 | 1,683,122.18 | 40.055877°N | 104.847384°W |

Survey Report - Geographic

| | | | |
|------------------|--------------------------------|-------------------------------------|--|
| Company: | Anadarko Petroleum Corporation | Local Co-ordinate Reference: | Well Riverbend 07-14 (111414) - Slot 07-14 |
| Project: | Riverbend | TVD Reference: | KB @ 4967.00ft (Original Well Elev) |
| Site: | Riverbend 14 Pad | MD Reference: | KB @ 4967.00ft (Original Well Elev) |
| Well: | Riverbend 07-14 (111414) | North Reference: | True |
| Wellbore: | 07-14 | Survey Calculation Method: | Minimum Curvature |
| Design: | 07-14 | Database: | EDM5000 |

| Survey | | | | | | | | | |
|---------------------|-----------------|-------------|---------------------|------------|------------|---------------------|--------------------|-------------|--------------|
| Measured Depth (ft) | Inclination (°) | Azimuth (°) | Vertical Depth (ft) | +N/-S (ft) | +E/-W (ft) | Map Northing (usft) | Map Easting (usft) | Latitude | Longitude |
| 294.00 | 2.02 | 227.98 | 293.96 | -2.22 | -2.51 | 14,547,115.78 | 1,683,120.46 | 40.055873°N | 104.847390°W |
| 402.00 | 2.99 | 241.07 | 401.86 | -4.85 | -6.39 | 14,547,113.14 | 1,683,116.58 | 40.055866°N | 104.847404°W |
| 492.00 | 5.10 | 247.80 | 491.63 | -7.50 | -12.15 | 14,547,110.48 | 1,683,110.83 | 40.055859°N | 104.847424°W |
| 584.00 | 6.50 | 251.80 | 583.16 | -10.67 | -20.88 | 14,547,107.29 | 1,683,102.10 | 40.055850°N | 104.847456°W |
| 673.00 | 8.48 | 248.90 | 671.40 | -14.61 | -31.79 | 14,547,103.34 | 1,683,091.20 | 40.055839°N | 104.847495°W |
| 762.00 | 10.81 | 242.70 | 759.13 | -20.80 | -45.33 | 14,547,097.13 | 1,683,077.67 | 40.055822°N | 104.847543°W |
| 851.00 | 11.51 | 241.16 | 846.45 | -28.91 | -60.53 | 14,547,088.99 | 1,683,062.48 | 40.055800°N | 104.847597°W |
| 942.00 | 10.99 | 240.77 | 935.70 | -37.52 | -76.05 | 14,547,080.35 | 1,683,046.98 | 40.055776°N | 104.847653°W |
| 1,005.00 | 10.99 | 240.77 | 997.55 | -43.39 | -86.53 | 14,547,074.46 | 1,683,036.51 | 40.055760°N | 104.847690°W |
| 1,061.00 | 10.28 | 243.98 | 1,052.58 | -48.19 | -95.68 | 14,547,069.65 | 1,683,027.37 | 40.055747°N | 104.847723°W |
| 1,145.00 | 11.12 | 251.89 | 1,135.13 | -53.99 | -110.12 | 14,547,063.82 | 1,683,012.94 | 40.055731°N | 104.847775°W |
| 1,235.00 | 12.61 | 251.89 | 1,223.20 | -59.75 | -127.70 | 14,547,058.04 | 1,682,995.36 | 40.055715°N | 104.847837°W |
| 1,330.00 | 15.12 | 249.78 | 1,315.43 | -67.25 | -149.19 | 14,547,050.49 | 1,682,973.89 | 40.055694°N | 104.847914°W |
| 1,420.00 | 16.39 | 246.79 | 1,402.05 | -76.32 | -171.88 | 14,547,041.39 | 1,682,951.22 | 40.055670°N | 104.847995°W |
| 1,510.00 | 18.80 | 247.79 | 1,487.83 | -86.80 | -196.98 | 14,547,030.86 | 1,682,926.14 | 40.055641°N | 104.848085°W |
| 1,600.00 | 21.80 | 247.79 | 1,572.23 | -98.60 | -225.88 | 14,547,019.01 | 1,682,897.25 | 40.055608°N | 104.848188°W |
| 1,688.00 | 23.99 | 247.18 | 1,653.29 | -111.72 | -257.50 | 14,547,005.84 | 1,682,865.66 | 40.055572°N | 104.848301°W |
| 1,780.00 | 24.30 | 244.06 | 1,737.25 | -127.26 | -291.76 | 14,546,990.25 | 1,682,831.42 | 40.055530°N | 104.848424°W |
| 1,868.00 | 26.59 | 241.78 | 1,816.71 | -144.49 | -325.40 | 14,546,972.95 | 1,682,797.81 | 40.055482°N | 104.848544°W |
| 1,957.00 | 28.52 | 243.36 | 1,895.61 | -163.44 | -361.95 | 14,546,953.94 | 1,682,761.29 | 40.055430°N | 104.848675°W |
| 2,042.00 | 30.28 | 242.79 | 1,969.66 | -182.34 | -399.15 | 14,546,934.98 | 1,682,724.13 | 40.055378°N | 104.848807°W |
| 2,133.00 | 31.11 | 240.20 | 2,047.91 | -204.51 | -439.96 | 14,546,912.74 | 1,682,683.36 | 40.055318°N | 104.848953°W |
| 2,222.00 | 31.60 | 239.19 | 2,123.92 | -227.88 | -479.94 | 14,546,889.30 | 1,682,643.42 | 40.055253°N | 104.849096°W |
| 2,311.00 | 32.39 | 239.58 | 2,199.40 | -251.90 | -520.52 | 14,546,865.21 | 1,682,602.88 | 40.055187°N | 104.849241°W |
| 2,401.00 | 32.08 | 239.32 | 2,275.52 | -276.30 | -561.86 | 14,546,840.74 | 1,682,561.58 | 40.055120°N | 104.849389°W |
| 2,491.00 | 31.68 | 241.16 | 2,351.95 | -299.89 | -603.12 | 14,546,817.08 | 1,682,520.36 | 40.055056°N | 104.849536°W |
| 2,580.00 | 31.29 | 241.69 | 2,427.85 | -322.12 | -643.94 | 14,546,794.77 | 1,682,479.58 | 40.054995°N | 104.849682°W |
| 2,669.00 | 33.79 | 241.78 | 2,502.87 | -344.79 | -686.10 | 14,546,772.03 | 1,682,437.46 | 40.054932°N | 104.849833°W |
| 2,758.00 | 31.81 | 238.97 | 2,577.68 | -368.59 | -728.01 | 14,546,748.17 | 1,682,395.59 | 40.054867°N | 104.849983°W |
| 2,846.00 | 30.10 | 241.16 | 2,653.15 | -391.19 | -767.22 | 14,546,725.50 | 1,682,356.42 | 40.054805°N | 104.850123°W |
| 2,936.00 | 29.62 | 241.47 | 2,731.20 | -412.70 | -806.53 | 14,546,703.92 | 1,682,317.14 | 40.054746°N | 104.850263°W |
| 3,026.00 | 29.71 | 244.99 | 2,809.41 | -432.75 | -846.28 | 14,546,683.80 | 1,682,277.42 | 40.054691°N | 104.850405°W |
| 3,115.00 | 30.50 | 244.90 | 2,886.40 | -451.66 | -886.72 | 14,546,664.82 | 1,682,237.02 | 40.054639°N | 104.850550°W |
| 3,205.00 | 32.61 | 243.67 | 2,963.09 | -472.11 | -929.15 | 14,546,644.30 | 1,682,194.63 | 40.054583°N | 104.850701°W |
| 3,293.00 | 31.99 | 242.57 | 3,037.47 | -493.36 | -971.09 | 14,546,622.98 | 1,682,152.72 | 40.054524°N | 104.850851°W |
| 3,379.00 | 32.21 | 241.87 | 3,110.33 | -514.66 | -1,011.52 | 14,546,601.61 | 1,682,112.33 | 40.054466°N | 104.850996°W |
| 3,469.00 | 32.70 | 243.10 | 3,186.27 | -536.97 | -1,054.36 | 14,546,579.23 | 1,682,069.53 | 40.054405°N | 104.851149°W |
| 3,559.00 | 29.82 | 243.36 | 3,263.20 | -558.01 | -1,096.05 | 14,546,558.12 | 1,682,027.88 | 40.054347°N | 104.851298°W |
| 3,649.00 | 32.92 | 243.36 | 3,340.03 | -579.01 | -1,137.92 | 14,546,537.04 | 1,681,986.04 | 40.054289°N | 104.851448°W |
| 3,738.00 | 29.49 | 246.22 | 3,416.15 | -598.70 | -1,179.60 | 14,546,517.29 | 1,681,944.40 | 40.054235°N | 104.851596°W |
| 3,828.00 | 27.69 | 247.10 | 3,495.17 | -615.77 | -1,219.13 | 14,546,500.15 | 1,681,904.89 | 40.054188°N | 104.851738°W |
| 3,918.00 | 28.39 | 247.67 | 3,574.61 | -632.03 | -1,258.19 | 14,546,483.81 | 1,681,865.86 | 40.054143°N | 104.851877°W |
| 4,007.00 | 29.49 | 247.58 | 3,652.49 | -648.43 | -1,298.01 | 14,546,467.35 | 1,681,826.07 | 40.054098°N | 104.852020°W |
| 4,098.00 | 26.81 | 246.96 | 3,732.72 | -665.01 | -1,337.61 | 14,546,450.71 | 1,681,786.50 | 40.054053°N | 104.852161°W |
| 4,186.00 | 26.81 | 247.18 | 3,811.26 | -680.47 | -1,374.16 | 14,546,435.18 | 1,681,749.97 | 40.054010°N | 104.852292°W |
| 4,276.00 | 28.78 | 244.37 | 3,890.88 | -697.71 | -1,412.41 | 14,546,417.87 | 1,681,711.75 | 40.053963°N | 104.852428°W |
| 4,366.00 | 28.52 | 248.50 | 3,969.87 | -714.96 | -1,451.94 | 14,546,400.55 | 1,681,672.25 | 40.053916°N | 104.852570°W |
| 4,456.00 | 29.62 | 245.78 | 4,048.53 | -731.96 | -1,492.22 | 14,546,383.48 | 1,681,632.01 | 40.053869°N | 104.852714°W |
| 4,546.00 | 30.19 | 247.18 | 4,126.55 | -749.86 | -1,533.36 | 14,546,365.51 | 1,681,590.90 | 40.053820°N | 104.852861°W |
| 4,635.00 | 30.10 | 245.48 | 4,203.51 | -767.80 | -1,574.29 | 14,546,347.50 | 1,681,550.00 | 40.053771°N | 104.853007°W |
| 4,723.00 | 31.42 | 242.57 | 4,279.13 | -787.53 | -1,614.73 | 14,546,327.71 | 1,681,509.59 | 40.053716°N | 104.853151°W |
| 4,813.00 | 31.20 | 241.69 | 4,356.03 | -809.39 | -1,656.07 | 14,546,305.77 | 1,681,468.28 | 40.053656°N | 104.853299°W |
| 4,903.00 | 29.79 | 240.90 | 4,433.58 | -831.32 | -1,696.13 | 14,546,283.77 | 1,681,428.26 | 40.053596°N | 104.853442°W |
| 4,993.00 | 29.00 | 239.36 | 4,511.99 | -853.31 | -1,734.44 | 14,546,261.72 | 1,681,389.99 | 40.053536°N | 104.853579°W |
| 5,082.00 | 29.40 | 240.59 | 4,589.68 | -875.04 | -1,772.03 | 14,546,239.93 | 1,681,352.44 | 40.053476°N | 104.853714°W |

Survey Report - Geographic

| | | | |
|------------------|--------------------------------|-------------------------------------|--|
| Company: | Anadarko Petroleum Corporation | Local Co-ordinate Reference: | Well Riverbend 07-14 (111414) - Slot 07-14 |
| Project: | Riverbend | TVD Reference: | KB @ 4967.00ft (Original Well Elev) |
| Site: | Riverbend 14 Pad | MD Reference: | KB @ 4967.00ft (Original Well Elev) |
| Well: | Riverbend 07-14 (111414) | North Reference: | True |
| Wellbore: | 07-14 | Survey Calculation Method: | Minimum Curvature |
| Design: | 07-14 | Database: | EDM5000 |

| Survey | | | | | | | | | | |
|--------------------------------|-----------------|-------------|---------------------|------------|------------|---------------------|--------------------|-------------|--------------|--|
| Measured Depth (ft) | Inclination (°) | Azimuth (°) | Vertical Depth (ft) | +N/-S (ft) | +E/-W (ft) | Map Northing (usft) | Map Easting (usft) | Latitude | Longitude | |
| 5,171.00 | 30.41 | 236.28 | 4,666.84 | -898.27 | -1,809.80 | 14,546,216.63 | 1,681,314.71 | 40.053412°N | 104.853848°W | |
| 5,260.00 | 30.41 | 235.80 | 4,743.60 | -923.44 | -1,847.17 | 14,546,191.40 | 1,681,277.38 | 40.053343°N | 104.853982°W | |
| 5,350.00 | 32.39 | 236.99 | 4,820.41 | -949.38 | -1,886.23 | 14,546,165.40 | 1,681,238.37 | 40.053272°N | 104.854122°W | |
| 5,438.00 | 30.98 | 239.10 | 4,895.30 | -973.85 | -1,925.43 | 14,546,140.85 | 1,681,199.21 | 40.053205°N | 104.854262°W | |
| 5,528.00 | 31.11 | 238.70 | 4,972.40 | -997.82 | -1,965.17 | 14,546,116.81 | 1,681,159.51 | 40.053139°N | 104.854404°W | |
| 5,618.00 | 30.19 | 239.36 | 5,049.83 | -1,021.44 | -2,004.51 | 14,546,093.13 | 1,681,120.21 | 40.053074°N | 104.854544°W | |
| 5,707.00 | 30.19 | 241.29 | 5,126.76 | -1,043.59 | -2,043.39 | 14,546,070.91 | 1,681,081.37 | 40.053013°N | 104.854683°W | |
| 5,796.00 | 29.49 | 240.46 | 5,203.96 | -1,065.14 | -2,082.08 | 14,546,049.29 | 1,681,042.72 | 40.052954°N | 104.854821°W | |
| 5,884.00 | 28.78 | 241.56 | 5,280.83 | -1,085.91 | -2,119.55 | 14,546,028.46 | 1,681,005.28 | 40.052897°N | 104.854955°W | |
| 5,973.00 | 27.20 | 242.57 | 5,359.41 | -1,105.48 | -2,156.45 | 14,546,008.82 | 1,680,968.42 | 40.052843°N | 104.855087°W | |
| 6,059.00 | 26.02 | 243.36 | 5,436.30 | -1,123.00 | -2,190.75 | 14,545,991.25 | 1,680,934.14 | 40.052795°N | 104.855210°W | |
| 6,149.00 | 24.08 | 242.79 | 5,517.83 | -1,140.25 | -2,224.73 | 14,545,973.95 | 1,680,900.20 | 40.052748°N | 104.855331°W | |
| 6,239.00 | 21.18 | 241.29 | 5,600.90 | -1,156.46 | -2,255.33 | 14,545,957.68 | 1,680,869.63 | 40.052703°N | 104.855441°W | |
| 6,328.00 | 19.20 | 240.77 | 5,684.42 | -1,171.33 | -2,282.20 | 14,545,942.77 | 1,680,842.78 | 40.052662°N | 104.855537°W | |
| 6,414.00 | 16.79 | 237.30 | 5,766.21 | -1,184.94 | -2,305.00 | 14,545,929.11 | 1,680,820.01 | 40.052625°N | 104.855618°W | |
| 6,503.00 | 14.50 | 235.27 | 5,851.91 | -1,198.24 | -2,324.97 | 14,545,915.78 | 1,680,800.05 | 40.052588°N | 104.855689°W | |
| 6,591.00 | 12.39 | 233.08 | 5,937.50 | -1,210.19 | -2,341.58 | 14,545,903.80 | 1,680,783.47 | 40.052556°N | 104.855749°W | |
| 6,679.00 | 10.42 | 235.19 | 6,023.75 | -1,220.40 | -2,355.66 | 14,545,893.56 | 1,680,769.40 | 40.052527°N | 104.855799°W | |
| 6,768.00 | 9.40 | 235.80 | 6,111.42 | -1,229.08 | -2,368.28 | 14,545,884.86 | 1,680,756.80 | 40.052504°N | 104.855844°W | |
| 6,857.00 | 8.22 | 235.49 | 6,199.37 | -1,236.77 | -2,379.54 | 14,545,877.15 | 1,680,745.56 | 40.052482°N | 104.855884°W | |
| 6,945.00 | 6.68 | 236.28 | 6,286.63 | -1,243.18 | -2,388.98 | 14,545,870.73 | 1,680,736.13 | 40.052465°N | 104.855918°W | |
| 7,034.00 | 5.89 | 239.36 | 6,375.09 | -1,248.38 | -2,397.21 | 14,545,865.52 | 1,680,727.90 | 40.052451°N | 104.855948°W | |
| 7,124.00 | 5.01 | 240.20 | 6,464.68 | -1,252.69 | -2,404.60 | 14,545,861.20 | 1,680,720.52 | 40.052439°N | 104.855974°W | |
| 7,214.00 | 4.48 | 240.28 | 6,554.38 | -1,256.38 | -2,411.06 | 14,545,857.49 | 1,680,714.07 | 40.052429°N | 104.855997°W | |
| 7,305.00 | 3.69 | 238.09 | 6,645.14 | -1,259.69 | -2,416.63 | 14,545,854.17 | 1,680,708.50 | 40.052420°N | 104.856017°W | |
| 7,335.75 | 3.52 | 237.40 | 6,675.84 | -1,260.72 | -2,418.27 | 14,545,853.14 | 1,680,706.87 | 40.052417°N | 104.856023°W | |
| 07-14 BH | | | | | | | | | | |
| 7,394.00 | 3.21 | 235.89 | 6,733.98 | -1,262.60 | -2,421.12 | 14,545,851.25 | 1,680,704.01 | 40.052412°N | 104.856033°W | |
| 7,481.00 | 2.50 | 244.99 | 6,820.87 | -1,264.77 | -2,424.86 | 14,545,849.08 | 1,680,700.28 | 40.052406°N | 104.856046°W | |
| 7,569.00 | 2.02 | 226.97 | 6,908.81 | -1,266.64 | -2,427.73 | 14,545,847.20 | 1,680,697.41 | 40.052400°N | 104.856057°W | |
| 7,659.00 | 1.58 | 211.06 | 6,998.76 | -1,268.79 | -2,429.53 | 14,545,845.05 | 1,680,695.61 | 40.052395°N | 104.856063°W | |
| 7,750.00 | 1.41 | 183.77 | 7,089.73 | -1,270.98 | -2,430.25 | 14,545,842.86 | 1,680,694.90 | 40.052389°N | 104.856066°W | |
| 7,840.00 | 1.19 | 178.76 | 7,179.71 | -1,273.02 | -2,430.31 | 14,545,840.82 | 1,680,694.85 | 40.052383°N | 104.856066°W | |
| 7,929.00 | 1.14 | 169.18 | 7,268.69 | -1,274.81 | -2,430.12 | 14,545,839.03 | 1,680,695.04 | 40.052378°N | 104.856065°W | |
| 8,019.00 | 1.49 | 156.88 | 7,358.67 | -1,276.77 | -2,429.49 | 14,545,837.07 | 1,680,695.67 | 40.052373°N | 104.856063°W | |
| 8,107.00 | 1.49 | 136.09 | 7,446.64 | -1,278.64 | -2,428.25 | 14,545,835.20 | 1,680,696.91 | 40.052367°N | 104.856058°W | |
| 8,198.00 | 1.41 | 128.27 | 7,537.61 | -1,280.19 | -2,426.55 | 14,545,833.66 | 1,680,698.62 | 40.052363°N | 104.856052°W | |
| 8,288.00 | 1.49 | 114.60 | 7,627.58 | -1,281.36 | -2,424.62 | 14,545,832.49 | 1,680,700.55 | 40.052360°N | 104.856045°W | |
| 8,347.00 | 1.49 | 114.60 | 7,686.56 | -1,282.00 | -2,423.22 | 14,545,831.85 | 1,680,701.95 | 40.052358°N | 104.856040°W | |
| Proj to TD at 8347 MD/7687 TVD | | | | | | | | | | |

| Survey Annotations | | | | | |
|---------------------|---------------------|-------------------|------------|--------------------------------|--|
| Measured Depth (ft) | Vertical Depth (ft) | Local Coordinates | | | |
| | | +N/-S (ft) | +E/-W (ft) | Comment | |
| 8,347.00 | 7,686.56 | -1,282.00 | -2,423.22 | Proj to TD at 8347 MD/7687 TVD | |

| | | |
|-------------------|--------------------|-------------|
| Checked By: _____ | Approved By: _____ | Date: _____ |
|-------------------|--------------------|-------------|