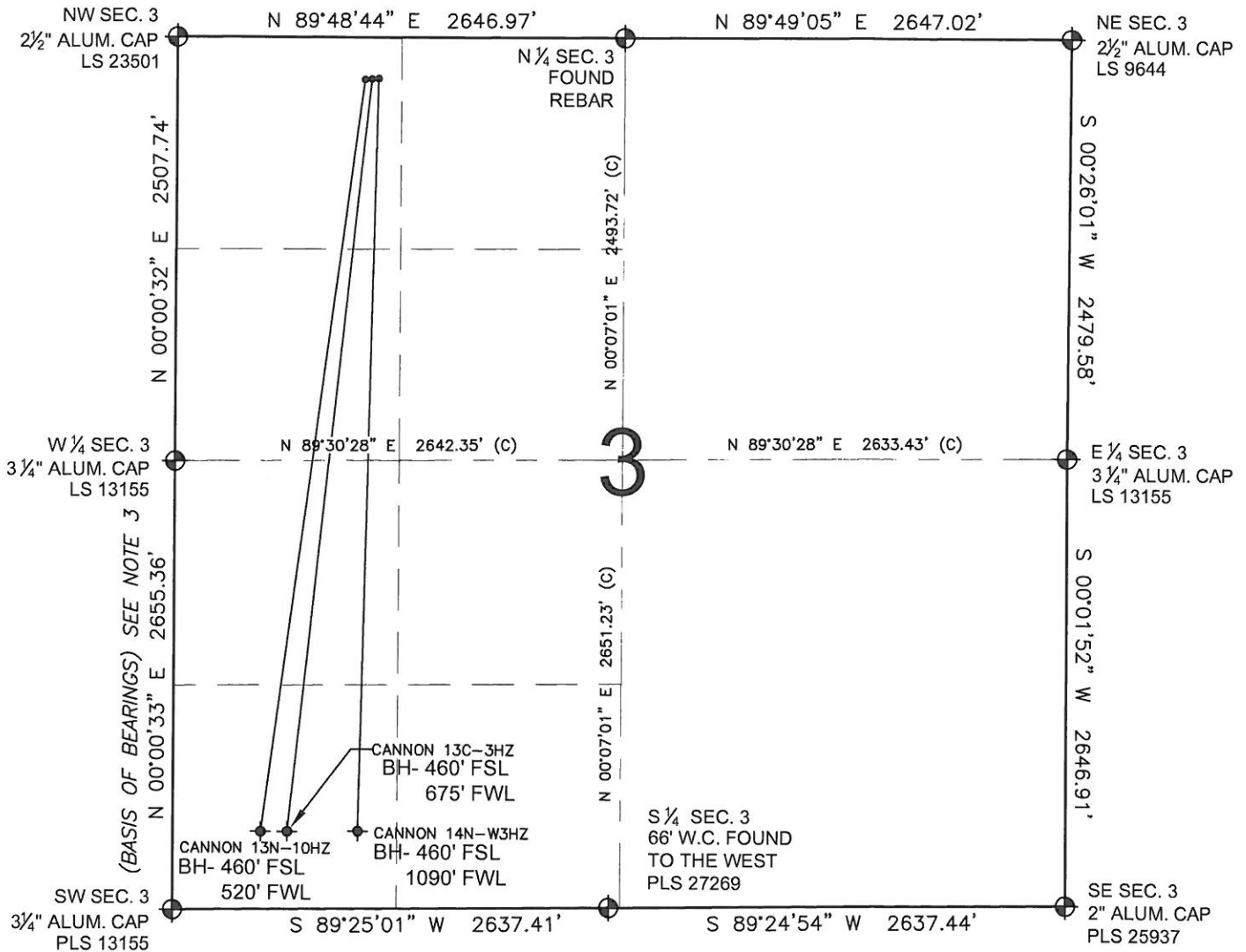


# PAD DRAWING: CANNON 3 PAD NWNW

SECTION 3, TOWNSHIP 2 NORTH, RANGE 65 WEST, 6TH P.M.



**NOTES:**

1. THIS FIELD SURVEY CONFORMS TO THE MINIMUM STANDARDS SET BY THE C.O.G.C.C., RULE NO. 215
2. HORIZONTAL POSITIONS AND ORTHOMETRIC ELEVATIONS SHOWN AT THE WELL HEAD, ARE BASED ON GPS-RTK POSITIONS DERIVED FROM MINIMUM 2-HOUR STATIC OBSERVATIONS CORRECTED BY THE NATIONAL GEODETIC SURVEY ONLINE POSITIONING USER SERVICE, O.P.U.S. DATUM: HORIZONTAL = NAD83/2007, VERTICAL = NAVD88
3. THE BASIS OF BEARINGS ARE STATE PLANE COORDINATE SYSTEM GRID BEARINGS SHOWN HEREON BETWEEN THE DESCRIBED MONUMENTS SHOWN HEREON.
4. GRID DISTANCES ARE SHOWN, AS MEASURED IN THE FIELD, WITH TIES TO WELLS MEASURED PERPENDICULAR TO SECTION LINES.

**LEGEND**

- ⊕ = EXISTING MONUMENT
- ⦿ = PROPOSED WELL
- ⦿ = BOTTOM HOLE
- ◆ = EXISTING WELL
- BH = BOTTOM HOLE

**NOTES:**

- CANNON 13N-10HZ TO BE AT 249' FNL, 1109' FWL. BOTTOM HOLE AT 460' FSL & 520' FWL
- CANNON 13C-3HZ TO BE AT 247' FNL, 1139' FWL. BOTTOM HOLE AT 460' FSL & 675' FWL.
- CANNON 14N-W3HZ TO BE AT 245' FNL, 1168' FWL. BOTTOM HOLE AT 460' FSL & 1090' FWL.

PREPARED BY:



KERR-MCGEE OIL & GAS ONSHORE LP

FIELD DATE: 04-06-12	PAD NAME: CANNON 3 PAD NWNW
DRAWING DATE: 05-23-12	SURFACE LOCATION: WELD COUNTY, COLORADO
BY: KAG	REV: SMF
NW 1/4 NW 1/4, SEC. 3, T2N, R65W, 6TH P.M.	

