

Downhole Schematic for ROSS 11-19



Project :DJ Basin

API # :05123333140000

Surface Location :SWNW Sec 19 T2N - R68W 6th F

Area : Wattenberg

County :

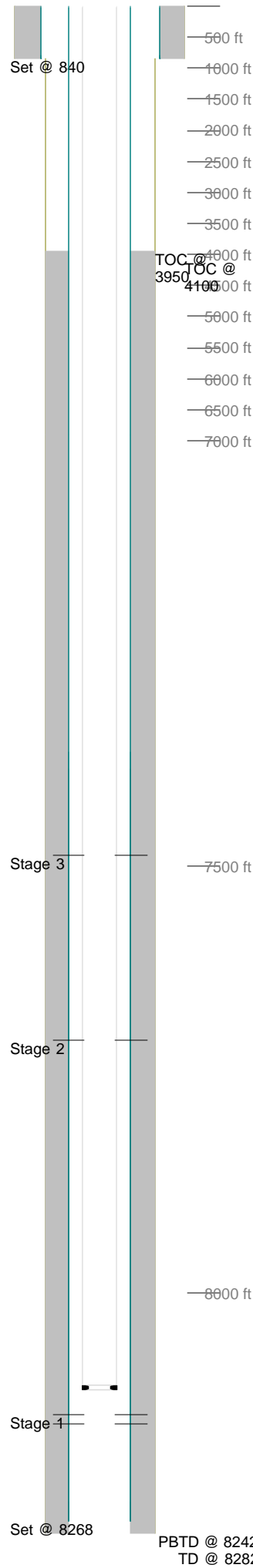
BHL :

As Of : 03/18/2012

GL : 4988.0 ft

KB to GL : 13.0 ft

KB : 5001.0 ft



Casing Details									
Section	Hole	Casing	Mass	Set At	Length	Thread	Grade	Description	
Surface	12.250		0	840	1			GS	
		8.625	24	839	41	ST&C	J55	SJ/BAFFLE	
		8.625	24	798	785	ST&C	J55	CASING	
			0	13	13			LJ	
Production	7.875		0	8,268	1	LT&C	L-80	Guide Shoe	
		4.5	11.6	8,267	21	LT&C	SB-80	Shoe Jt	
			0	8,246	1	LT&C	L-80	Float Collar	
		4.5	11.6	8,244	859	LT&C	SB-80	Casing	
		4.5	11.6	7,385	19	LT&C	SB-80	Marker Jt	
		4.5	11.6	7,366	7,353	LT&C	SB-80	Casing	
		4.5	11.6	13	13	LT&C	SB-80	Landing Jt	
Cement Details									
Section	Sequence	Top	Density	Blend / Additives					
Surface	Lead	0	14.5	TYPE III Cmt Class C / + .08 lbs/sk Static Free + 1.5% Calcium Chloride + 0.15 lbs/sk Cello Flake + 60.5% Fresh Water.					
Production	Lead	3,950	12.5	Premium Lite Cmt / +0.1% R-3 + 0.2% CD-32 +0.7% FL-63 + 0.2% ASA-301 + 6% Bentonite + 3 lbs/sx CSE-2					
	Tail	6,900	13.5	50:50 Poz,Fly Ash / Class G Cmt + 0.1% R-3 + 0.6% FL-63 + 3% Bentonite + 0.1% SM + 20% Silica Flour					
Tubing and Downhole Equipment									
O.D.	Length	Depth	Description						
0.000	12.00	12.00	KB						
0.000	0.50	12.50	Hanger						
2.375	8,096.51	8,109.01	246 jts of new 2-3/8 J-55 EUE 4.7#, 8rd tbg,						
2.375	1.10	8,110.11	Seat nipple						
0.000	10.10	8,120.21	2-3/8 J-55 pup jt						
0.000	0.92	8,121.13	Re-entry guide						
Perforations									
Stage 1	Date	From	To	Shots	Stage 3	Date	From	To	Shots
	02/17/2012	8,154	8,174	40		02/23/2012	7,704	7,721	51
		8,144	8,149	10					
Stage 2	Date	From	To	Shots	Stage 3	Date	From	To	Shots
						02/23/2012	7,487	7,502	60
Frac Summary									
Stage 1 : 8,144 - 8,174, 50 - 0.420" shots, 3899 bbls of Hybrid pHaserFrac, 250280 lbs of 20/40 Ottawa									
Report Date: 02/23/2012									
Stage 2 : 7,704 - 7,721, 51 - 0.420" shots, 5059 bbls of FR Water, 152860 lbs of 30/50 Ottawa Report Date: 02/24/2012									
Stage 3 : 7,487 - 7,502, 60 - 0.420" shots, 5233 bbls of FR Water, 161000 lbs of 30/50 Sand Report Date: 02/26/2012									
Bridge Plug Details									
Depth	Date Set	Plug Type	Sacks Cement						
7,790.0	02/24/2012	CBP	0						
7,450.0	02/24/2012	CBP	0						
7,450.0	03/17/2012	CBP	0						
CBP at 7,790.0 drilled out 03/18/2012									
CBP at 7,450.0 drilled out 03/18/2012									
CBP at 7,450.0 drilled out 03/18/2012									