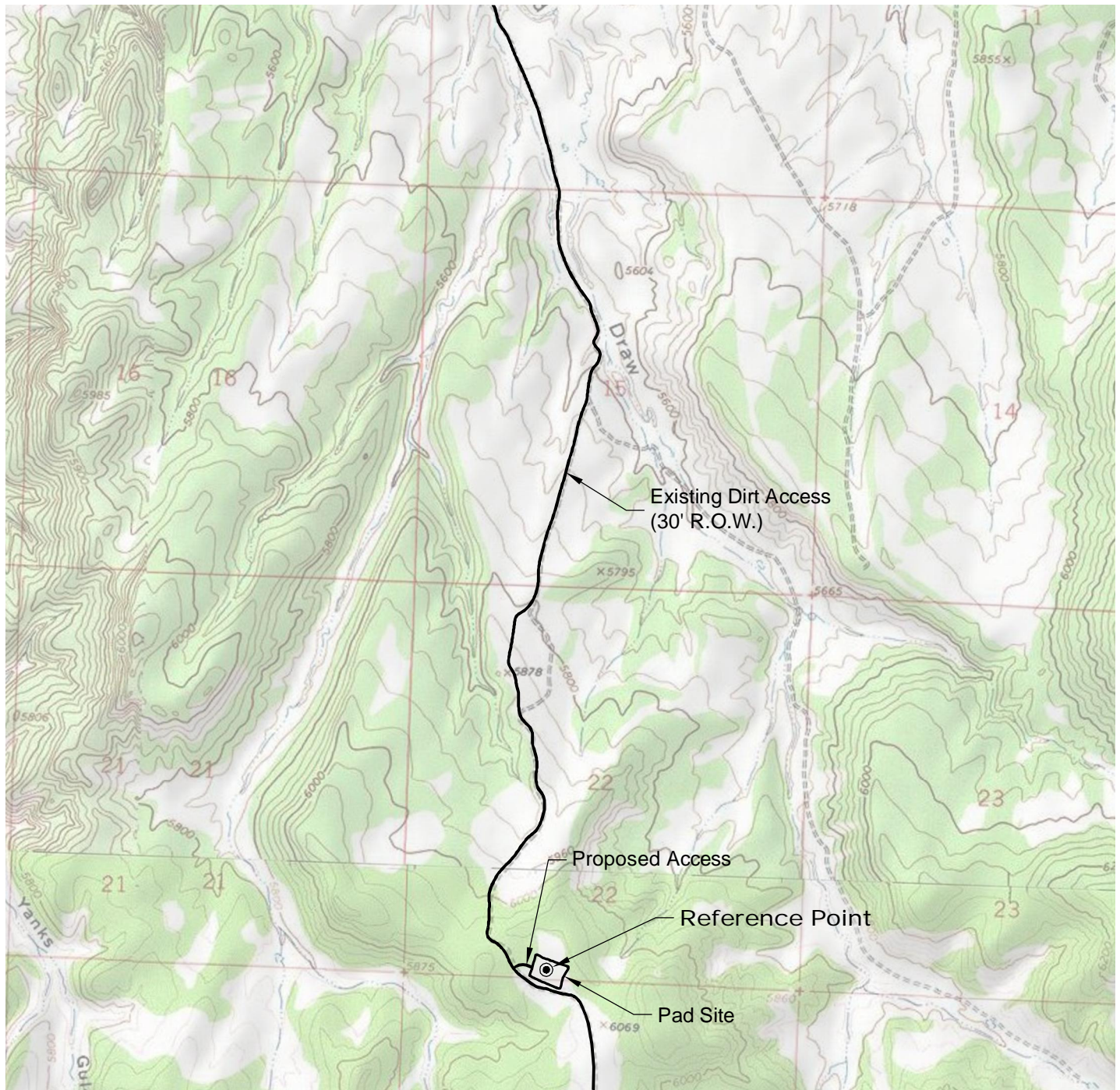


ACCESS ROAD MAP



DRIVING DIRECTIONS:

MP 0.0 - Rangely; Intersection of Highway 64 & Highway 139; East on Highway 64
MP 12.0 - Right on existing road; south along existing road
MP 15.4 - Left on access to Fletcher Gulch Federal 22-14 Pad
MP 15.5 - Fletcher Gulch Federal 22-14 Pad

1/30/12



Graphic Scale in Feet
1" = 2000'



LAND SURVEYING AND MAPPING
LAFAYETTE - WINTER PARK
Ph 303 666 0379 Fx 303 665 6320

LARAMIE ENERGY II LLC
FLETCHER GULCH FEDERAL 22-14 PAD

SE1/4 SW1/4 SECTION 22 T2N R100W
6th PM RIO BLANCO COUNTY COLORADO