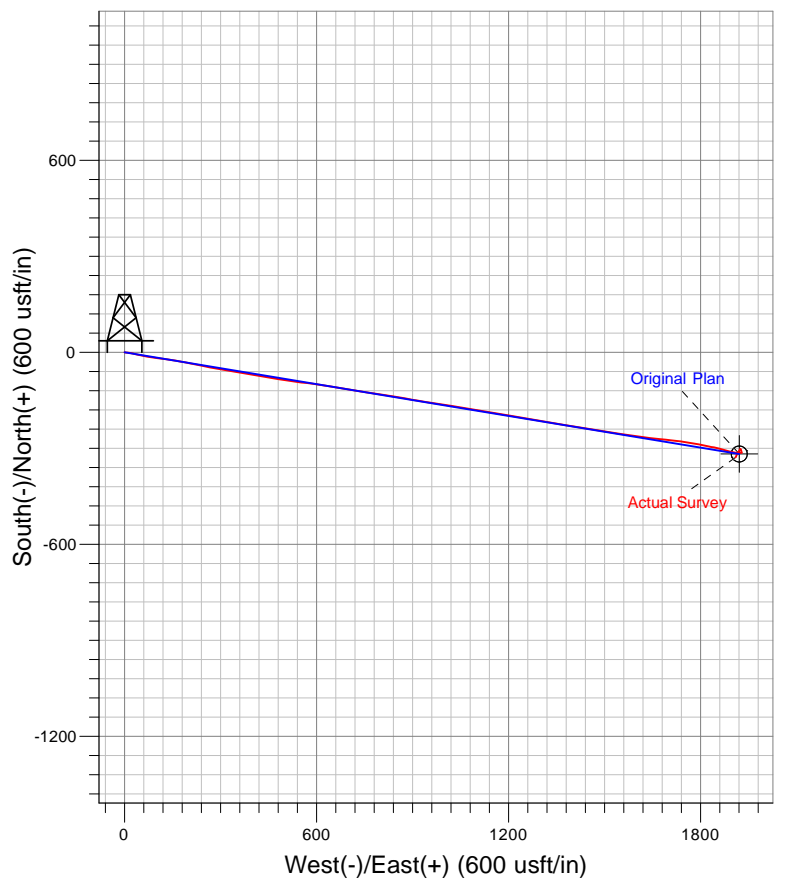
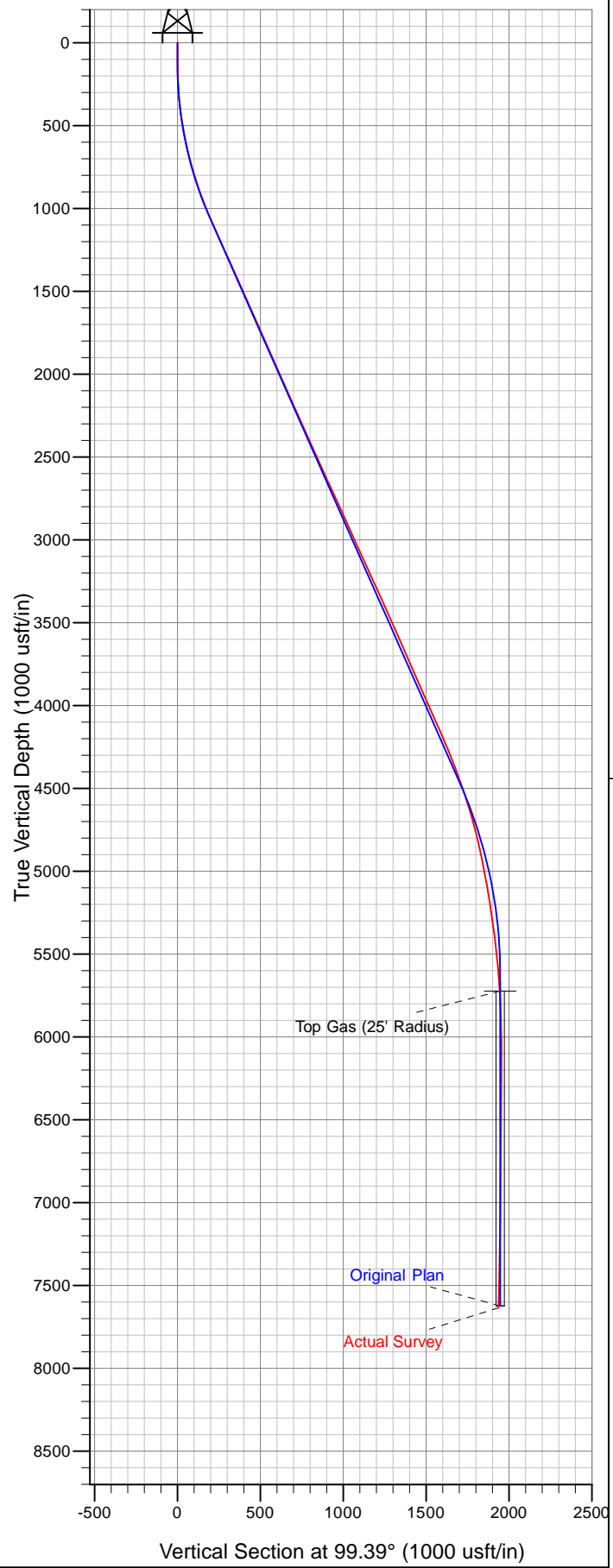




Well Name: GM 533-23  
 Surface Location: MV 10-23 Pad  
 North American Datum 1983 , US State Plane 1983. Colorado Central Zone  
 Ground Elevation: 5976.00

+N/-S	+E/-W	Northing	Easting	Latitude	Longitude	Slot
0.00	0.00	1619643.41	2271265.83	39° 30' 22.522 N	108° 4' 58.988 W	B10

KELLY BUSHING @ 6002.00usft (Nabors 576 (26' RKB) kjs)



Azimuths to True North  
 Magnetic North: 10.35°

Magnetic Field  
 Strength: 52211.0snT  
 Dip Angle: 65.72°  
 Date: 10/13/2011  
 Model: IGRF2010