

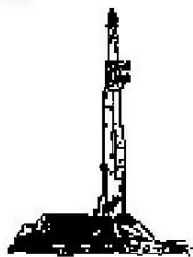
GOOLSBY BROTHERS and associates, inc.

575 Union Blvd, Suite 208
Lakewood, CO 80228
303-945-2860 Office



Geological Wellsite
Supervision

www.goolsbybrothers.com



Scale 1:240 (5"=100') Imperial
Measured Depth Log

Well Name: State # 1-16

Location: NWSW Sec 16-T19S-R50W, Kiowa County, Colorado

License Number: API: 05-061-06866

Spud Date: 11/11/11

Region: Wildcat

Drilling Completed: 11/25/11

Surface Coordinates: 2108' FSL & 692' FWL

Lat: 38.40206, Long: -103.02247

Bottom Hole Coordinates: Same

Ground Elevation (ft): 4394'

K.B. Elevation (ft): 4405'

Logged Interval (ft): 738' To: 5493'

Total Depth (ft): 5500' DTD

Formation: Morrow, Mississippi

Type of Drilling Fluid: LSND, Mud Co.

Printed by STRIP.LOG from WellSight Systems 1-800-447-1534 www.WellSight.com

OPERATOR

Company: Navex/Trek Resources, LLC

Address: 4925 Greenville Avenue, Suite 915

Dallas, TX 75206

Tel. (214) 382-3227

GEOLOGIST

Name: Ryan Scribner

Company: Goolsby Brothers and Associates

Address: 575 Union Blvd., Suite 208

Lakewood, CO 80228

Comments

- 1) 726' of 8 5/8", J-55, 24 # csg set @ 738' KB.
- 2) Contractor: Black Gold Rig #69. Toolpusher: Bob Kliesin
- 3) Plugged and abandoned on November 27, 2011.

ROCK TYPES



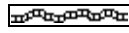
ss_fg+



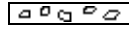
Carb sh



Anhy



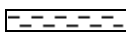
Bent



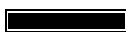
Brec



Cht



Clyst



Coal



Congl



Dol



Gyp



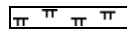
Igne



Lmst



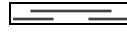
Meta



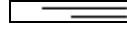
Mrlst



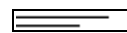
Salt



Shale



Shcol



Shgy



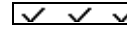
Ss



Till



sltst



anhy1



chalk

ACCESSORIES

MINERAL

Pyr
 Anhy
 Arggrn
 Arg
 Bent
 Bit
 Brecfrag
 Calc
 Carb
 Chtdk
 Chtlt
 Dol
 Feldspar
 Ferrpel
 Ferr
 Glau
 Gyp
 Hvymin
 Kaol

Marl
 Minxl
 Nodule
 Phos
 Pyr
 Salt
 Sandy
 Silt
 Sil
 Sulphur
 Tuff

FOSSIL

Algae
 Amph
 Belm
 Bioclst
 Brach
 Bryozoa
 Cephal

Coral
 Crin
 Echin
 Fish
 Foram
 Fossil
 Gastro
 Oolite
 Ostra
 Pelec
 Pellet
 Pisolite
 Plant
 Strom

STRINGER

Anhy
 Arg
 Bent
 Coal

Dol
 Gyp
 Ls
 Mrst
 Sltstrg
 Ssstrg

TEXTURE

Boundst
 Chalky
 Cryxln
 Earthy
 Finexln
 Grainst
 Lithogr
 Microxln
 Mudst
 Packst
 Wackest

OTHER SYMBOLS

POROSITY TYPE

Earthy
 Fenest
 Fracture
 Inter
 Moldic
 Organic
 Pinpoint
 Vuggy

SORTING

Well

Moderate
 Poor

ROUNDING

Rounded
 Subrnd
 Subang
 Angular

OIL SHOWS

Even
 Spotted

near even
 Ques
 Dead
 vspotty

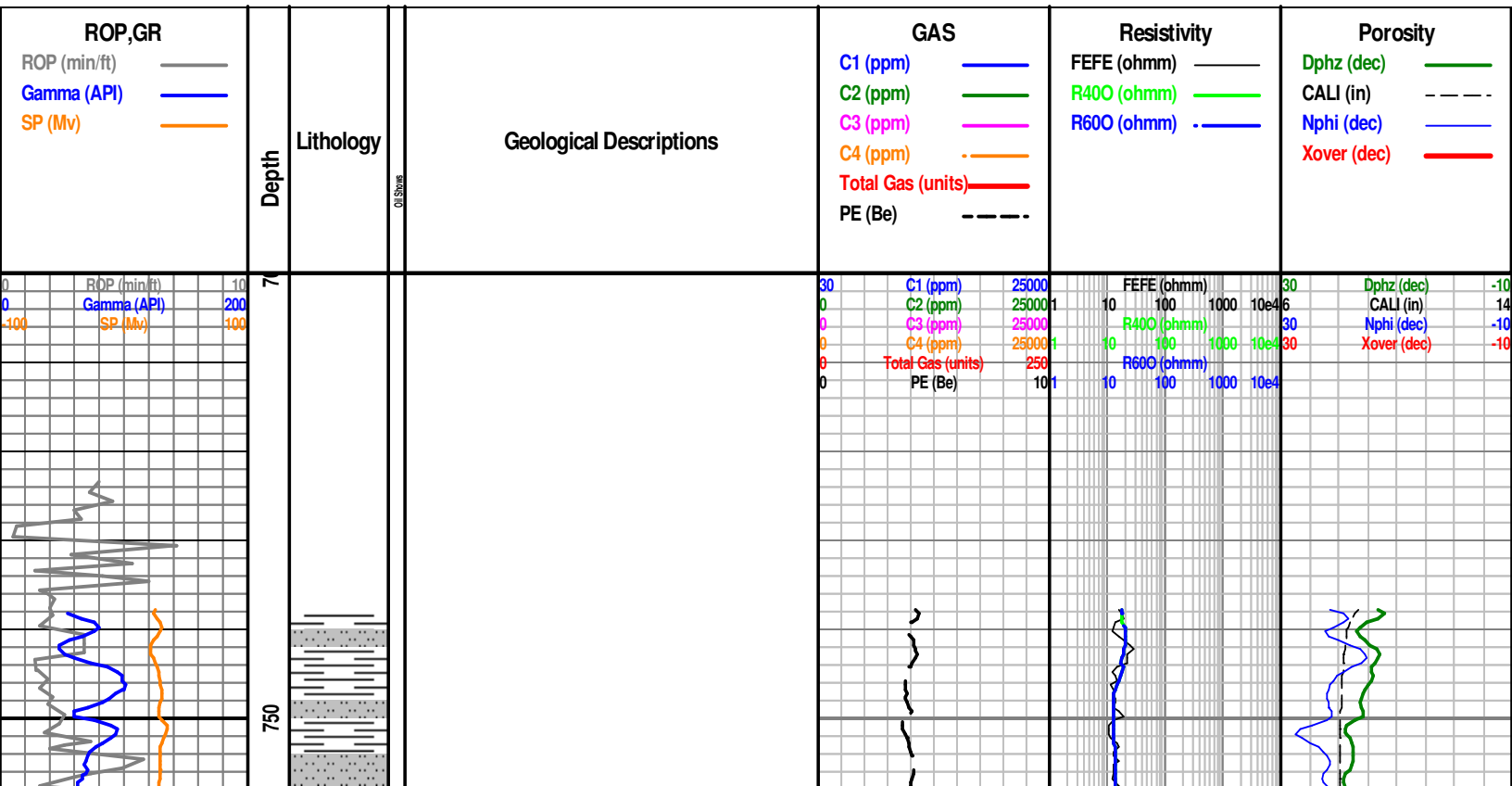
INTERVALS

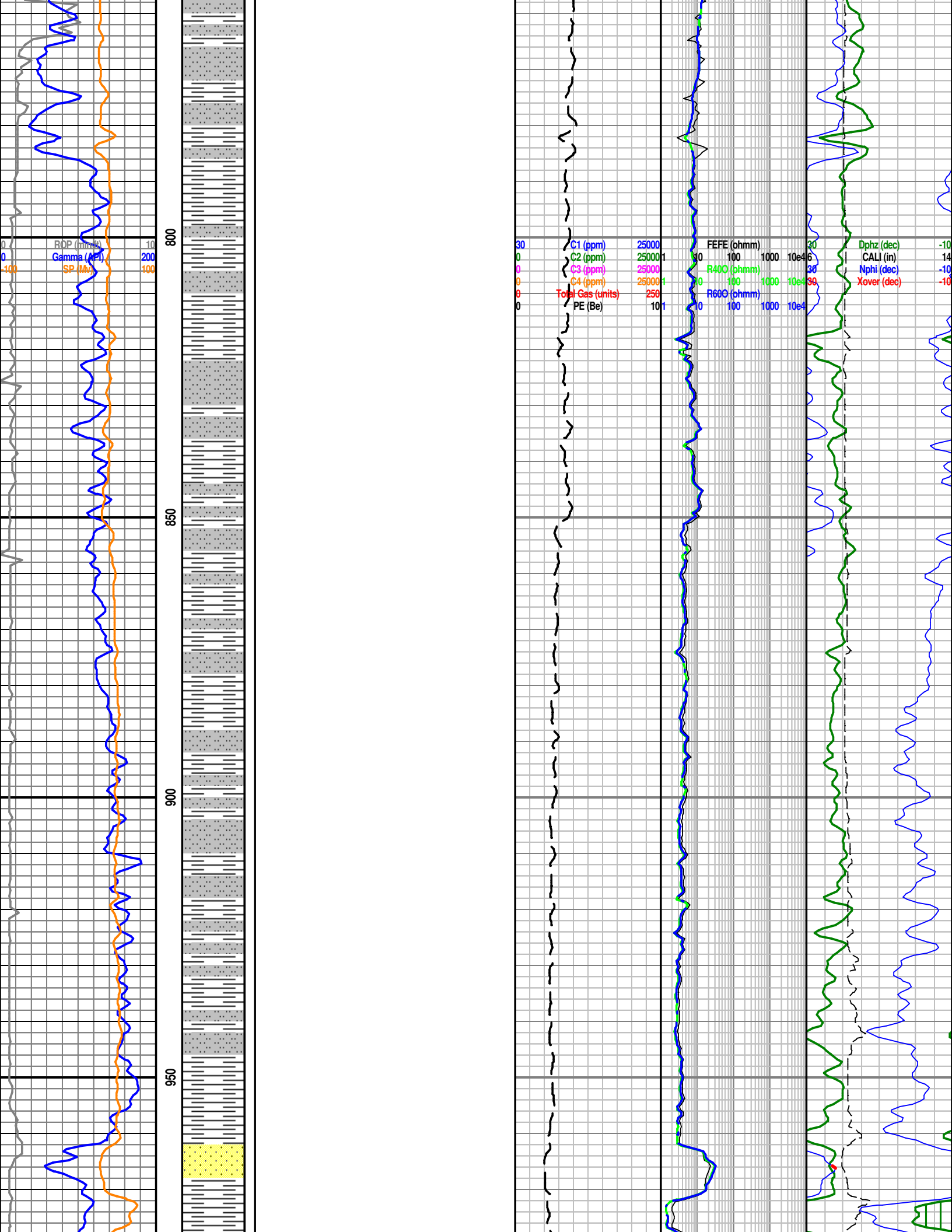
Core
 Dst
 casing

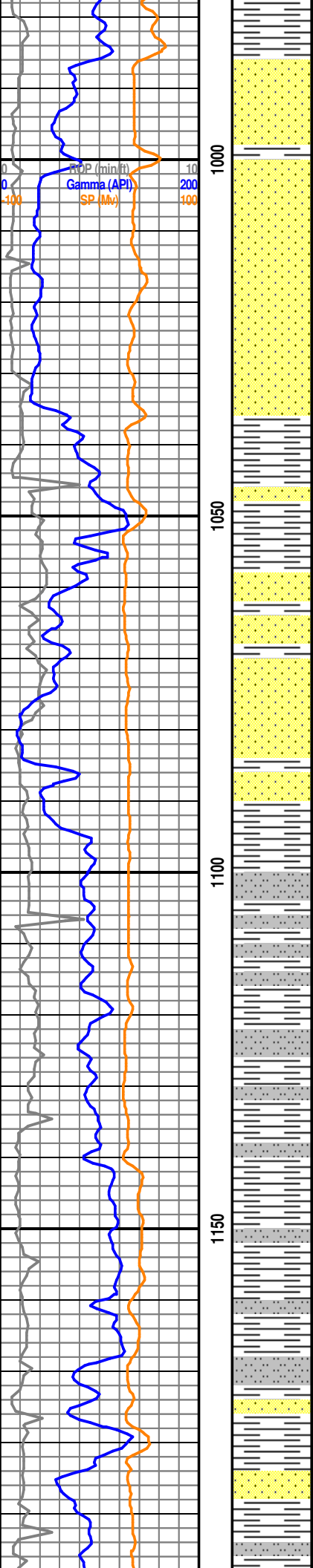
EVENTS

Rft

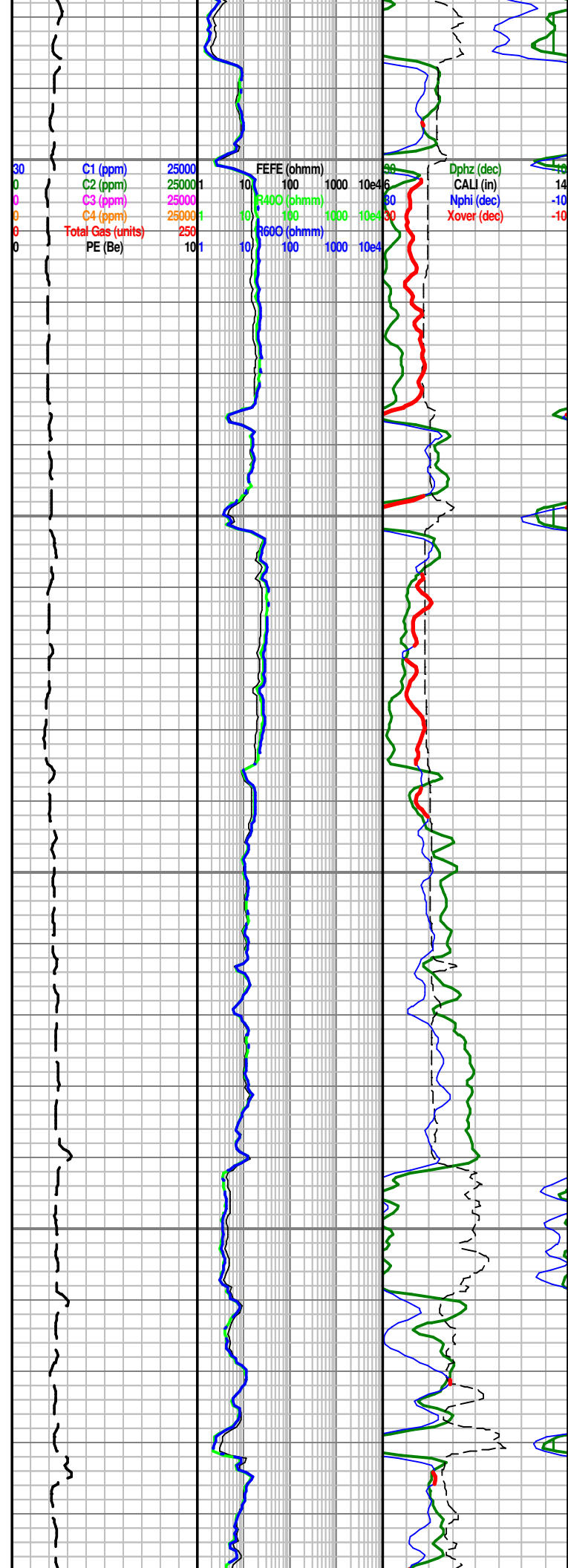
Sidewall
 New bit casingr
 casing
 Survey
 Off bottom conn
 perfs
 Survey(red)

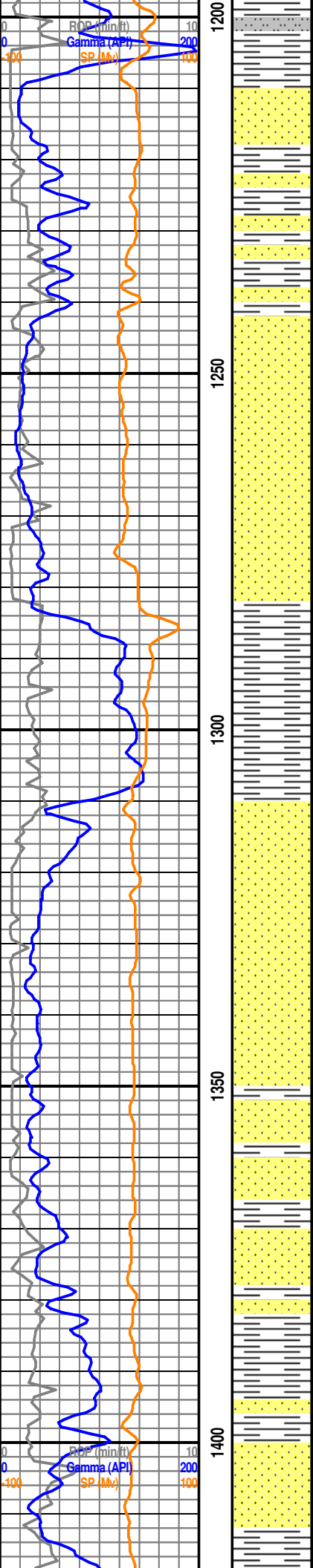




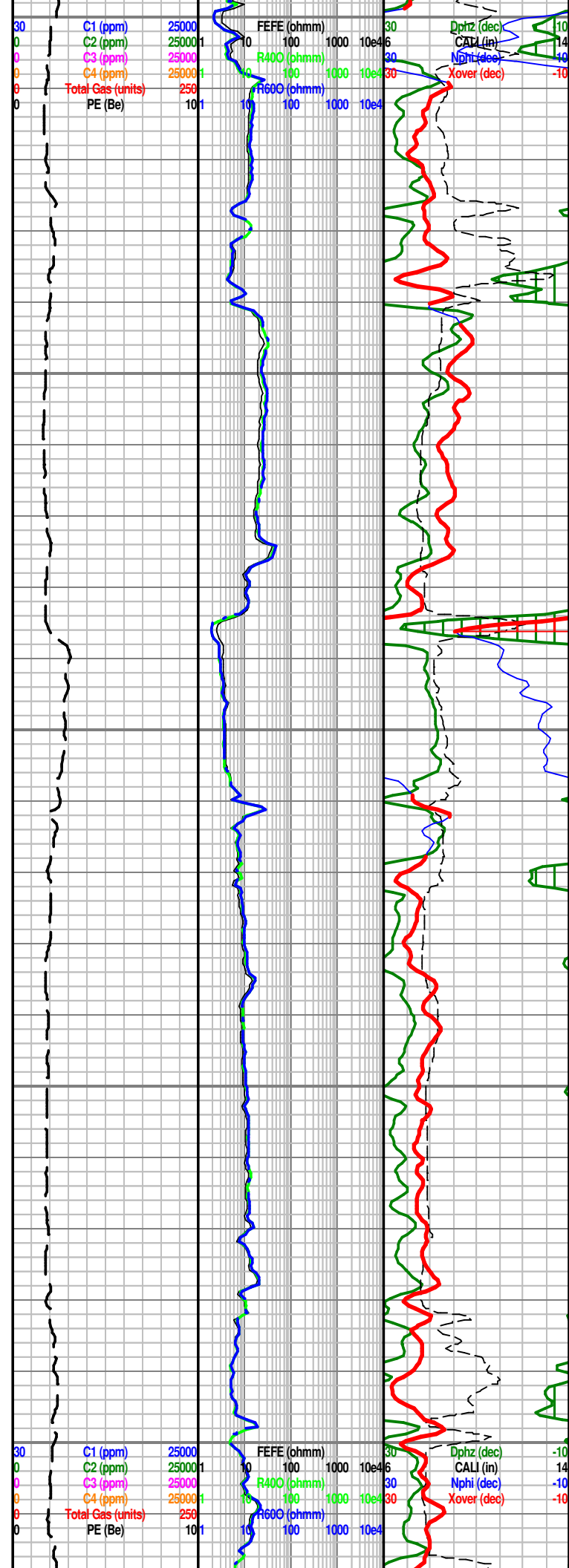


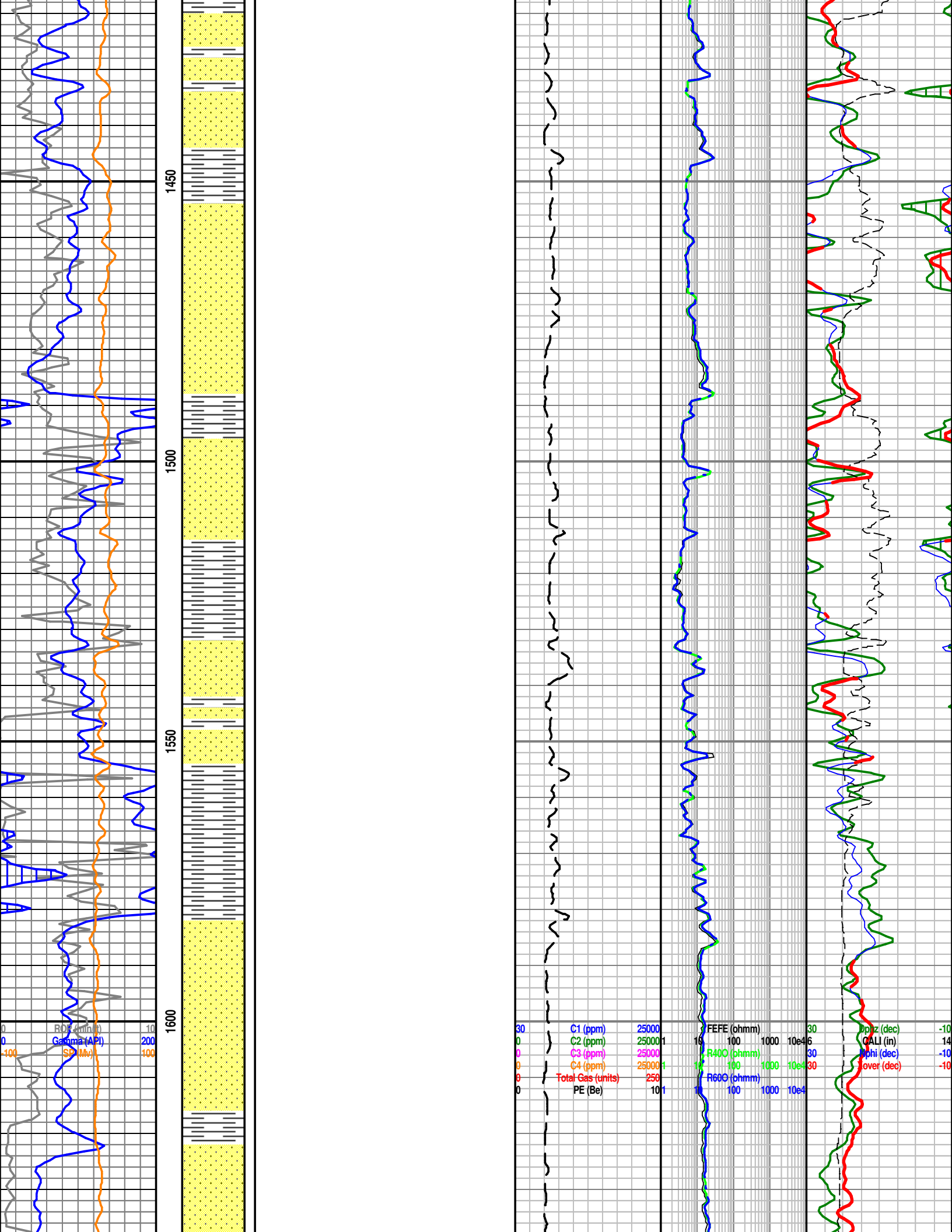
Morrison @ log 1035' (3370)

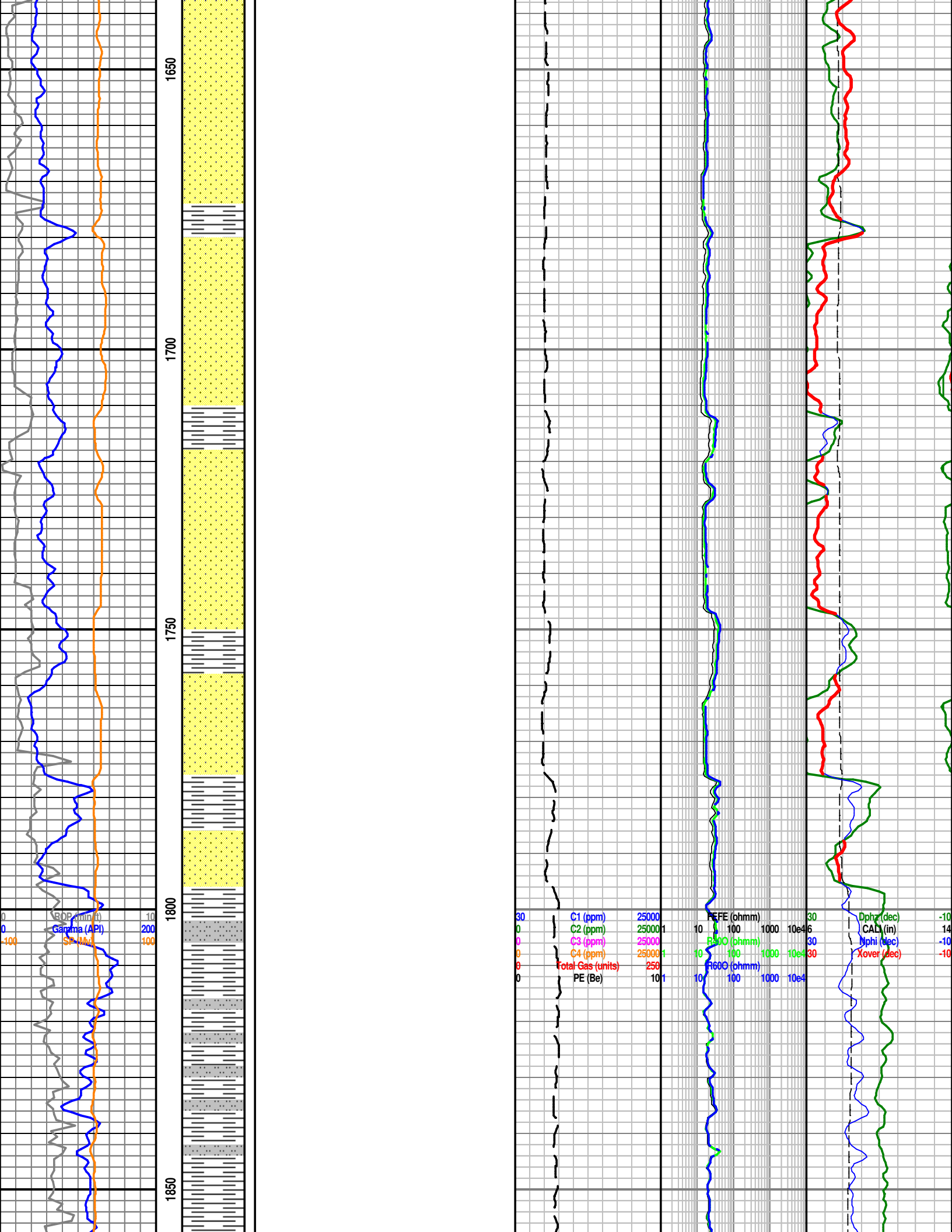


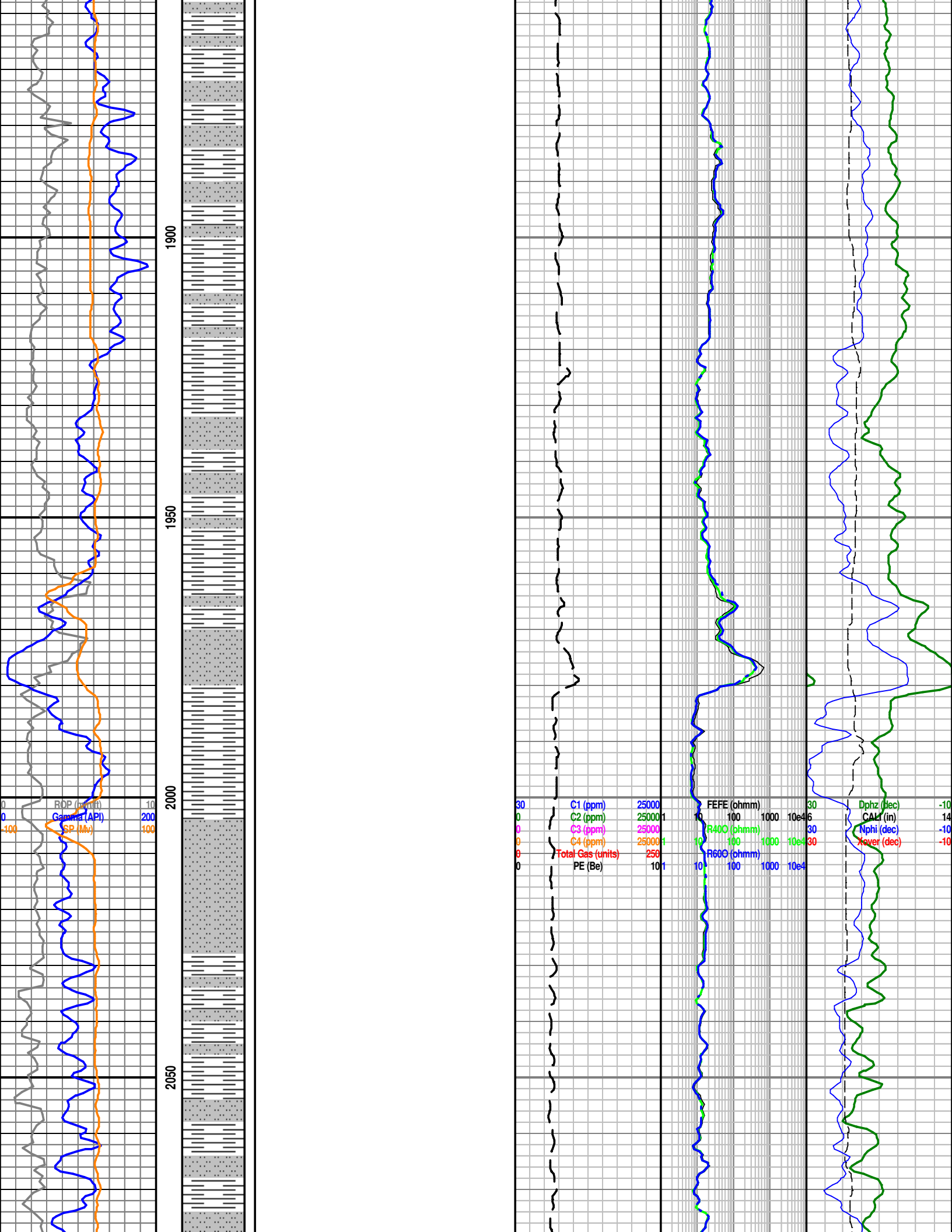


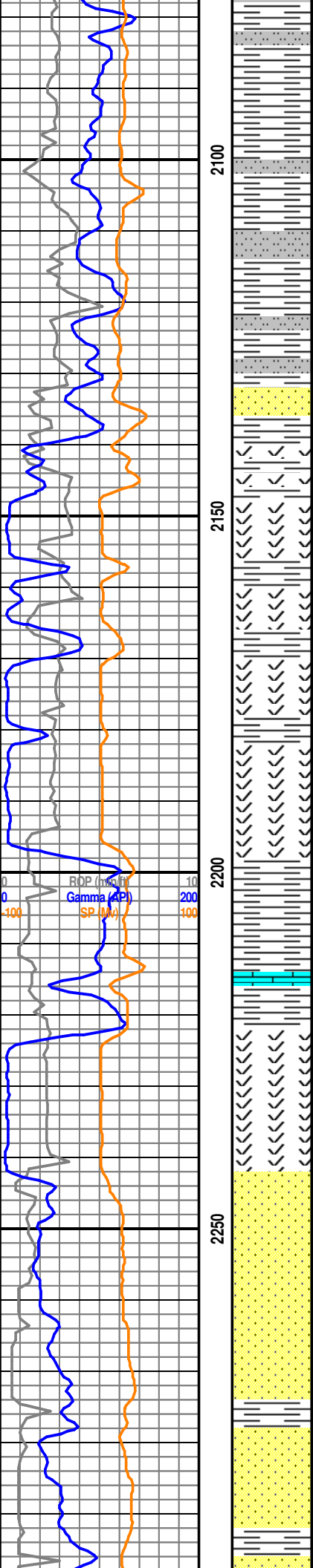
Cheyenne @ log 1400' (3005)



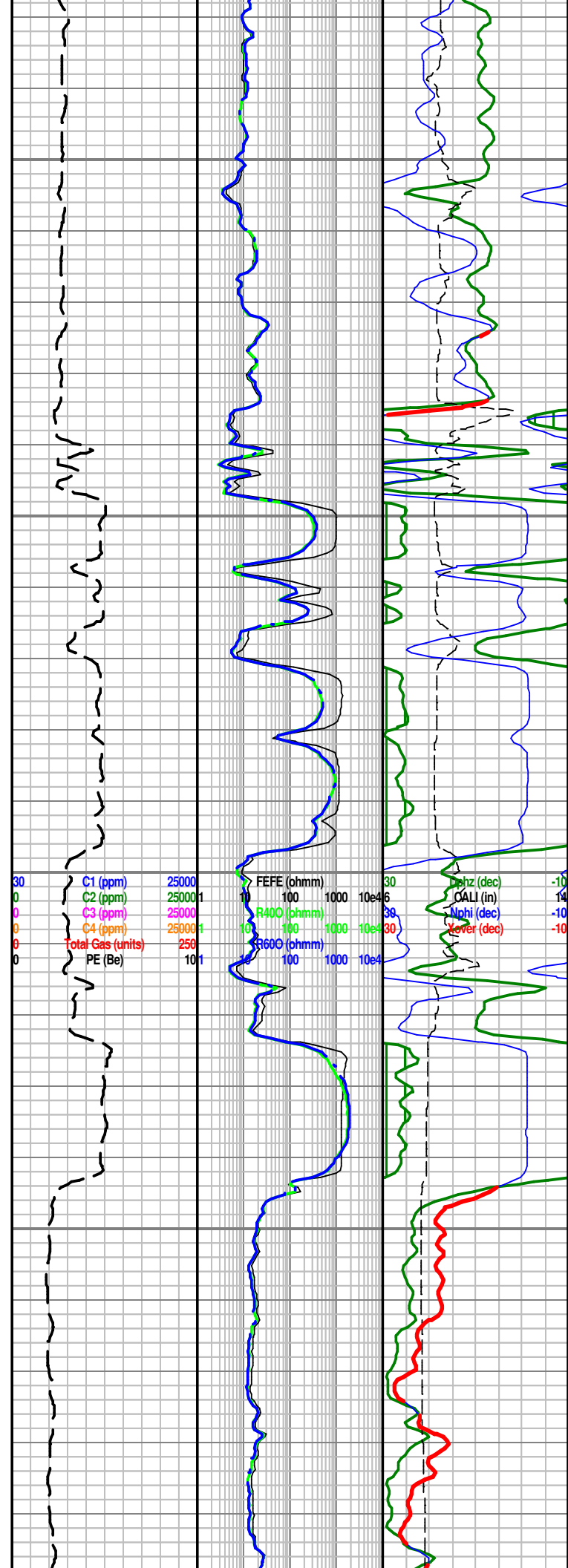


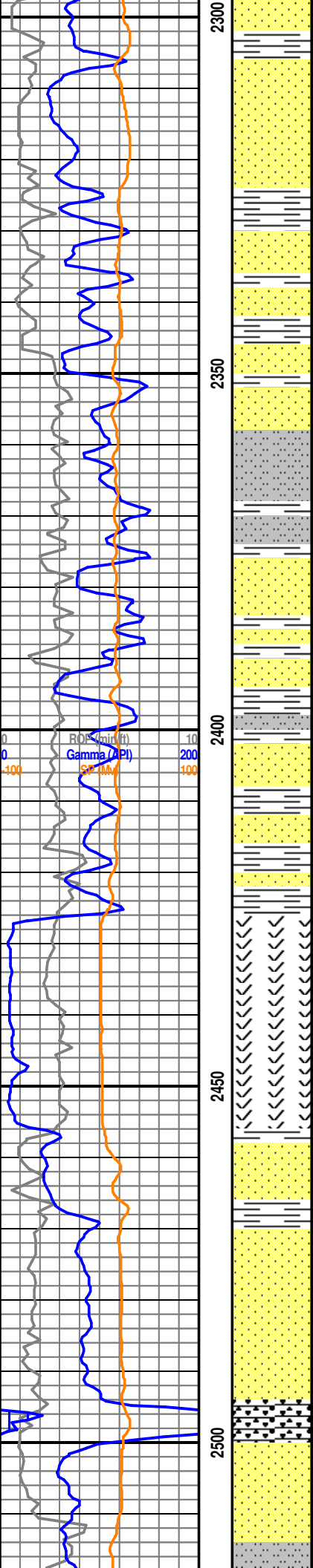




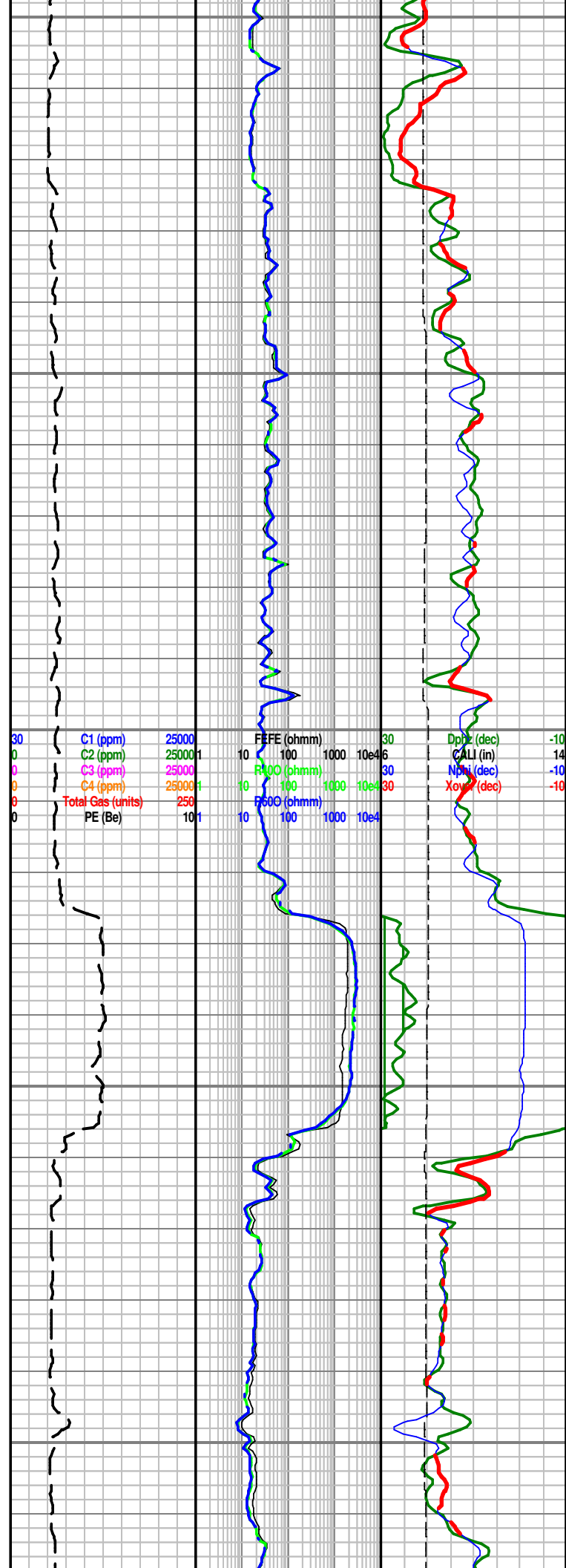


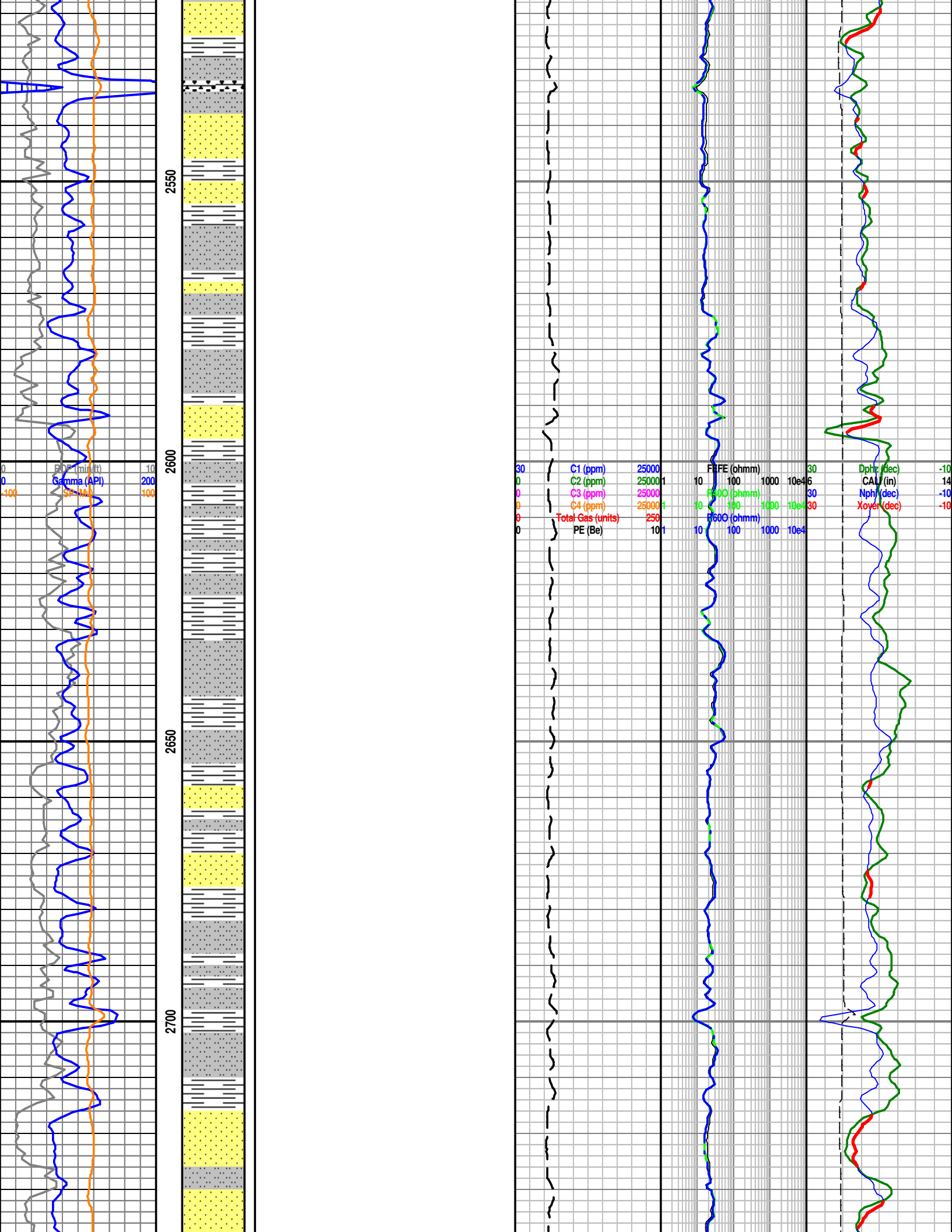
Cedar Hills @ log 2140' (2265)

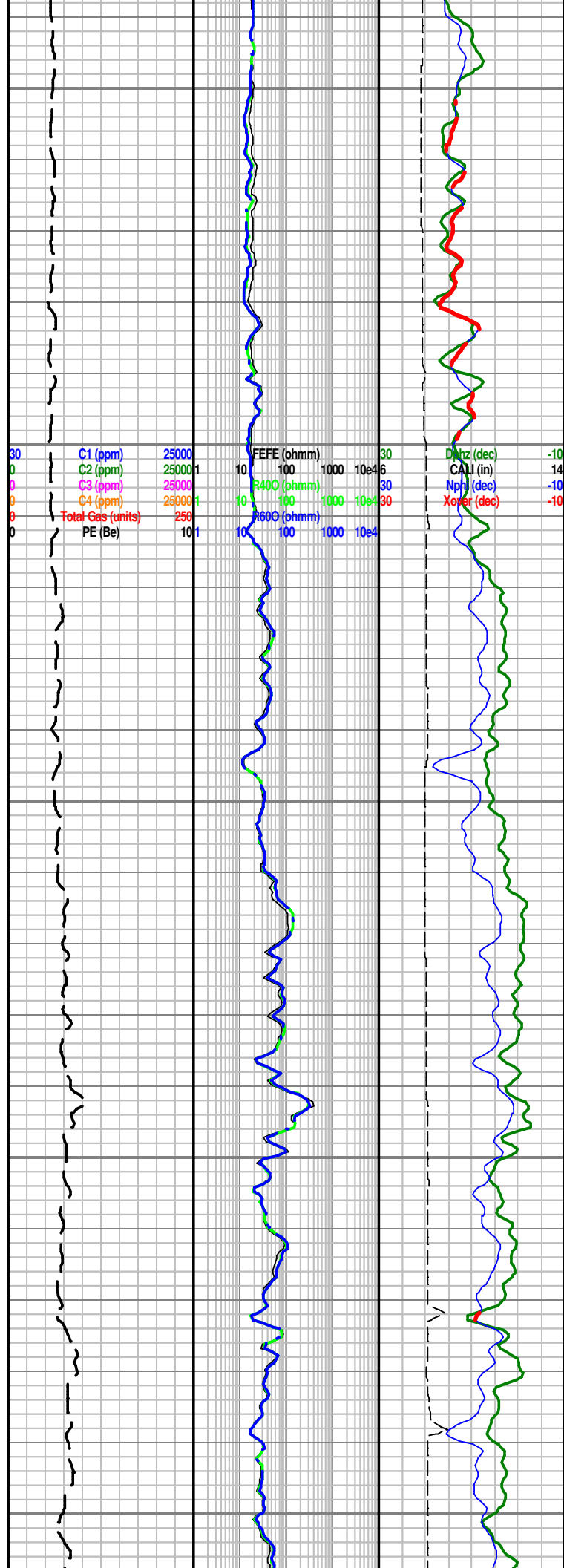
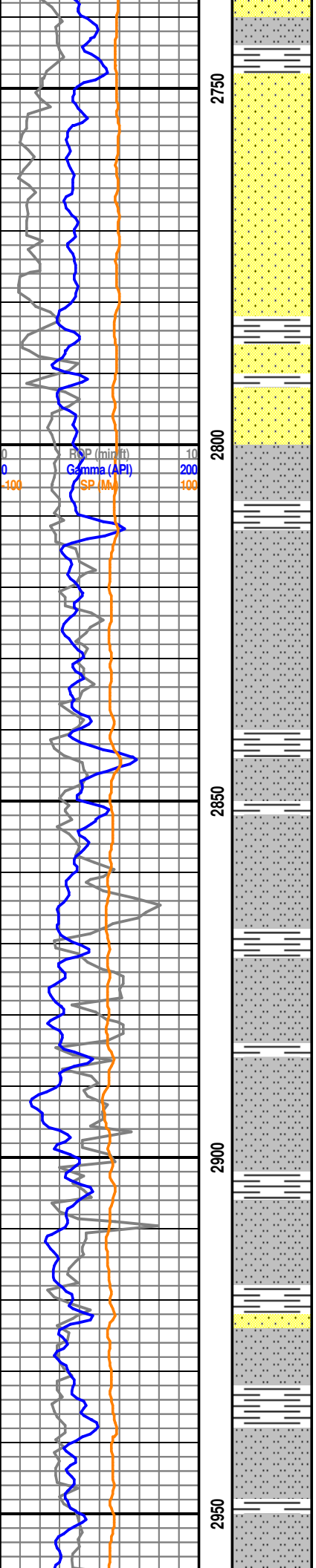


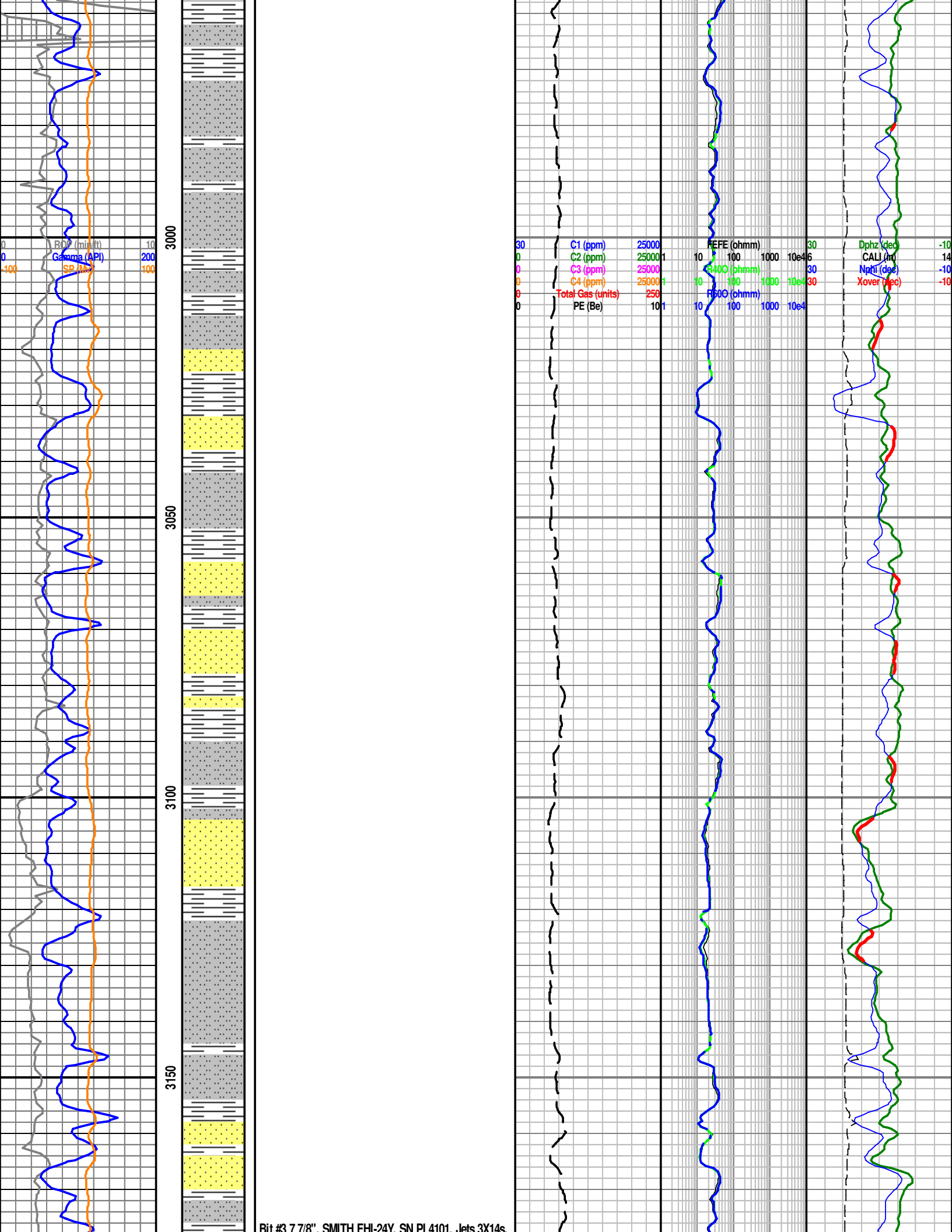


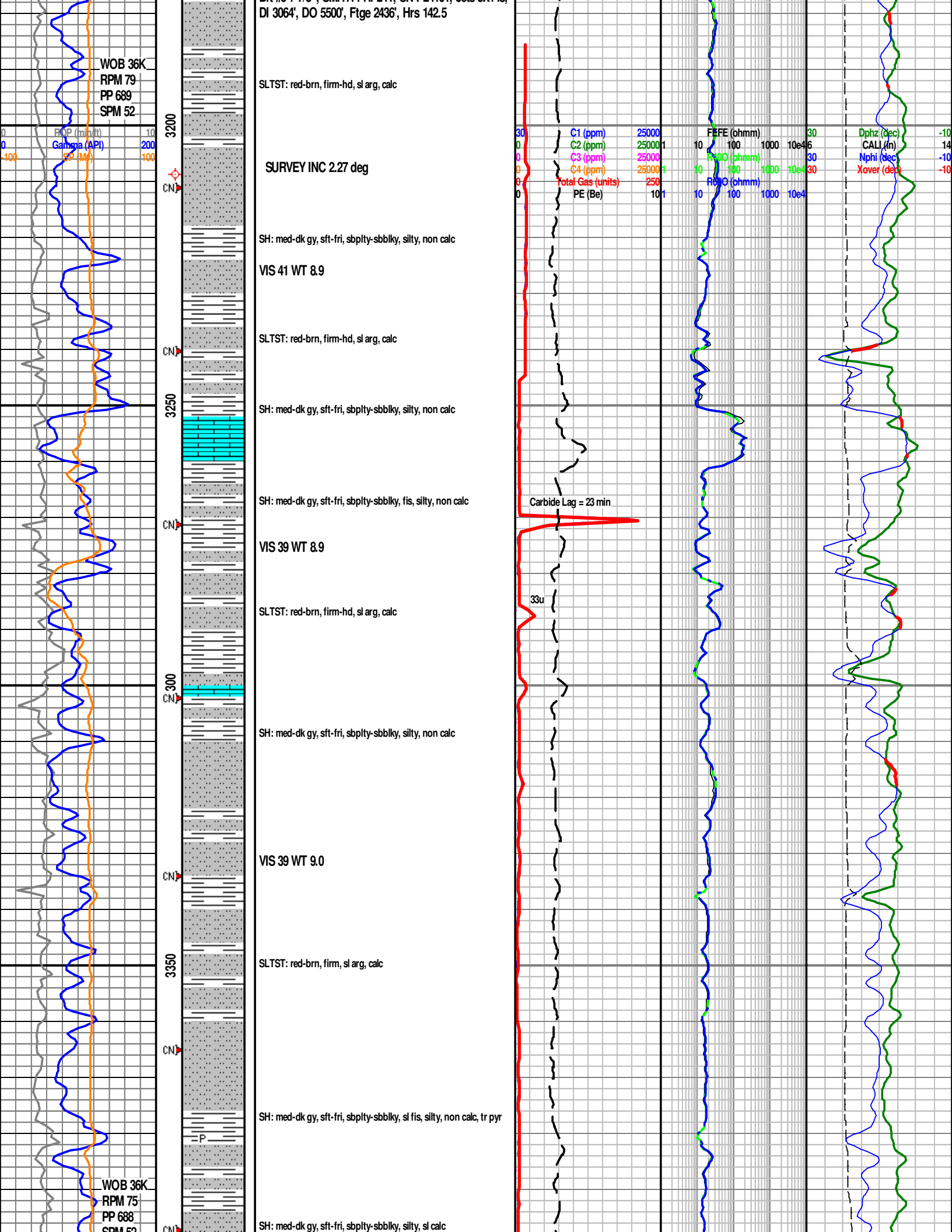
Stone Corral @ log 2426' (1979)

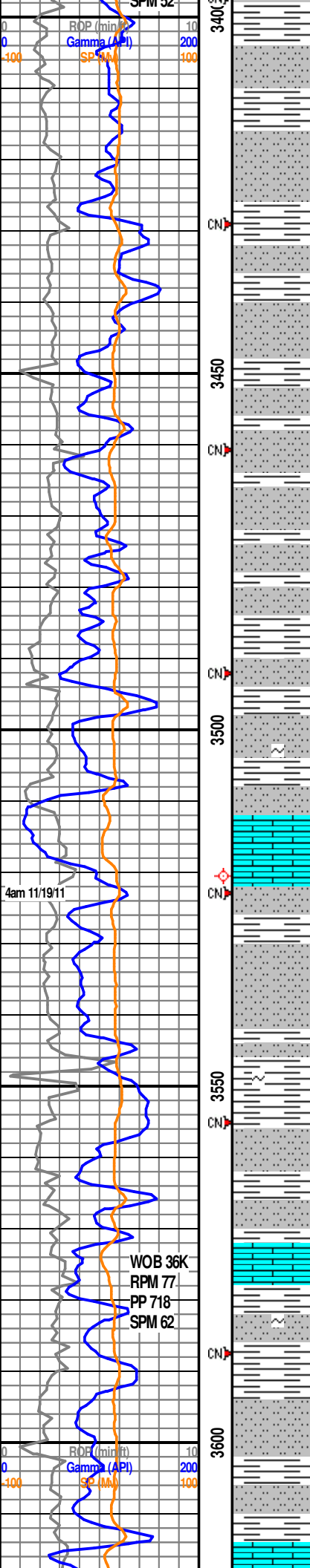












VIS 36 WT 9.1

SLTST: red-brn, sft-fri, sl arg, calc

SLTST: red-brn, sft-fri, sl arg, calc

VIS 42 WT 9.1

SH: med-dk gy, sft-fri, sbpity-sbbilky, sl fis, silty, sl calc

SLTST: red-brn, sft-fri, sl arg, calc, tr glauc

SURVEY INC 1.45 deg

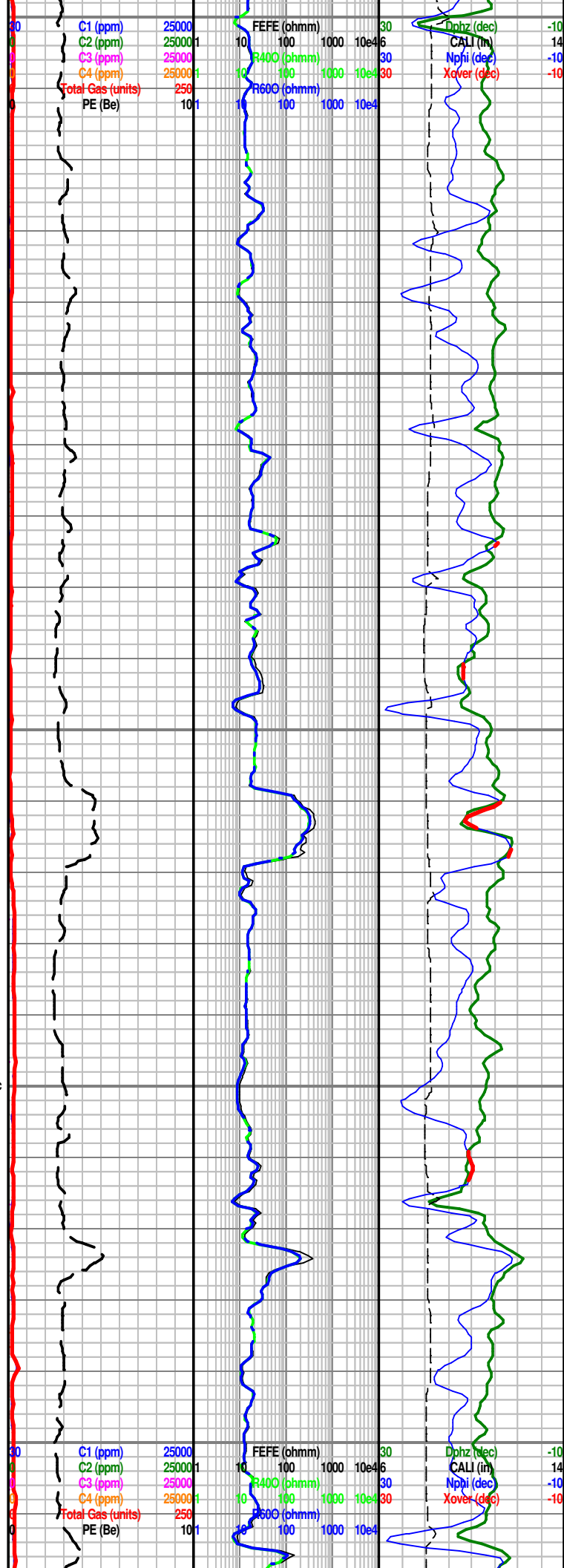
VIS 40 WT 9.1

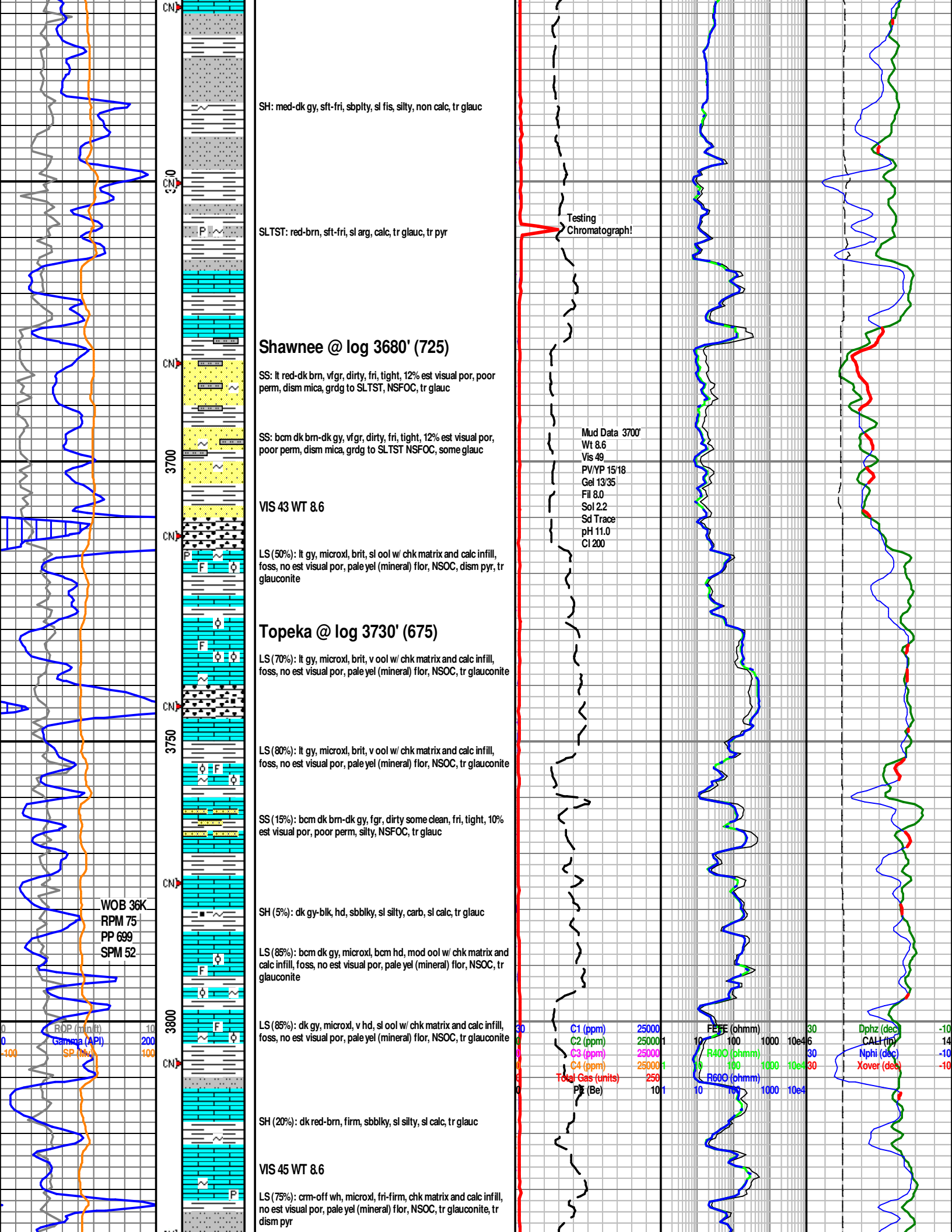
SH: med-dk gy, sft-fri, sbpity-sbbilky, sl fis, silty, non calc, tr glauc

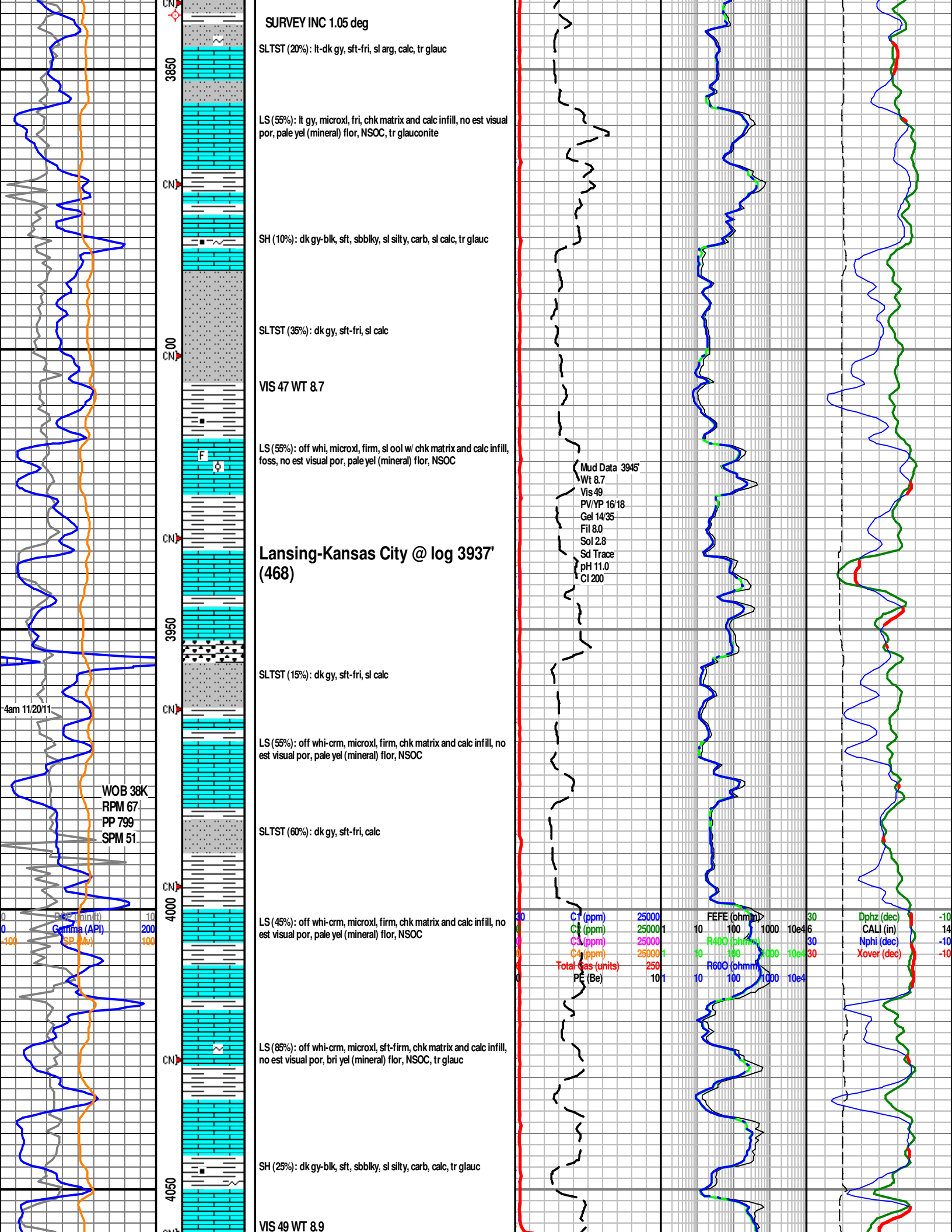
SLTST: red-brn, sft-fri, sl arg, calc, tr glauc

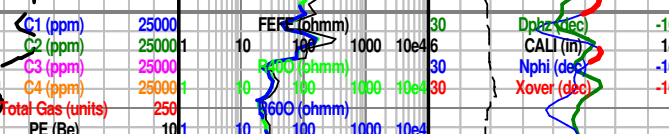
VIS 41 WT 9.1

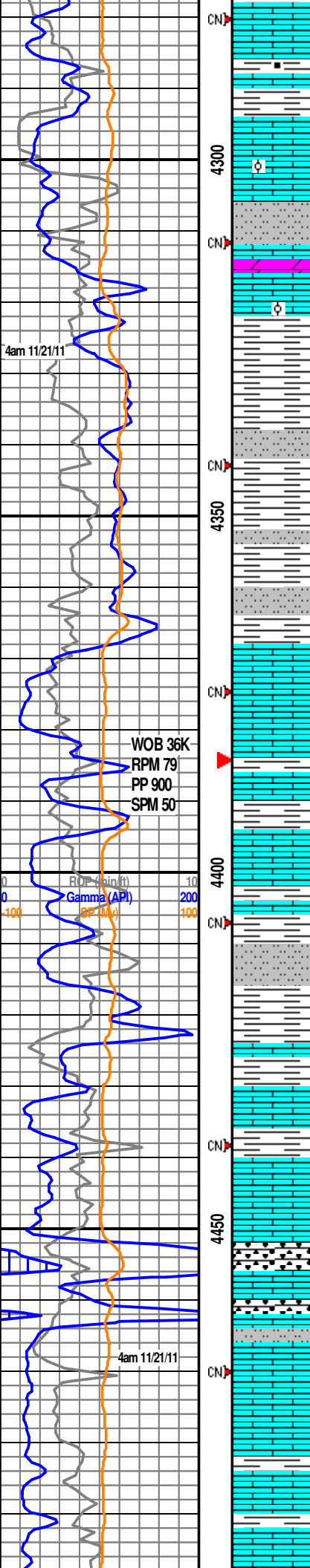
SLTST: red-brn, sft-fri, sl arg, calc











VIS 50 WT 9.0

Pawnee mbr @ log 4292' (113)

LS (80%): mostly off whi-crm, v few dk gy, microxl, fri-hd, v few scat oolite "ghosts", 15% est visual por, v few vugs, chk matrix and calc infill, NFSOC

Ft Scott mbr @ log 4317' (88)

LS (85%): off whi-crm, few dk gy, microxl, fri-hd, few scat oolite "ghosts", 15% est visual por, few vugs, chk matrix and calc infill, NFSOC

SH (60%): dk gy, sft, sbblky, sl silty, calc

SH (60%): dk gy-brn, sft, sbblky, silty, sl calc

VIS 48 WT 9.1

Off bottom to make wiper trip and build mud to compensate for losses.

LS (10%): off whi-crm, microxl, v hd, chk matrix and calc infill, no est visual por, NFSOC

SLTST (15%): lt gy, sft, sl calc

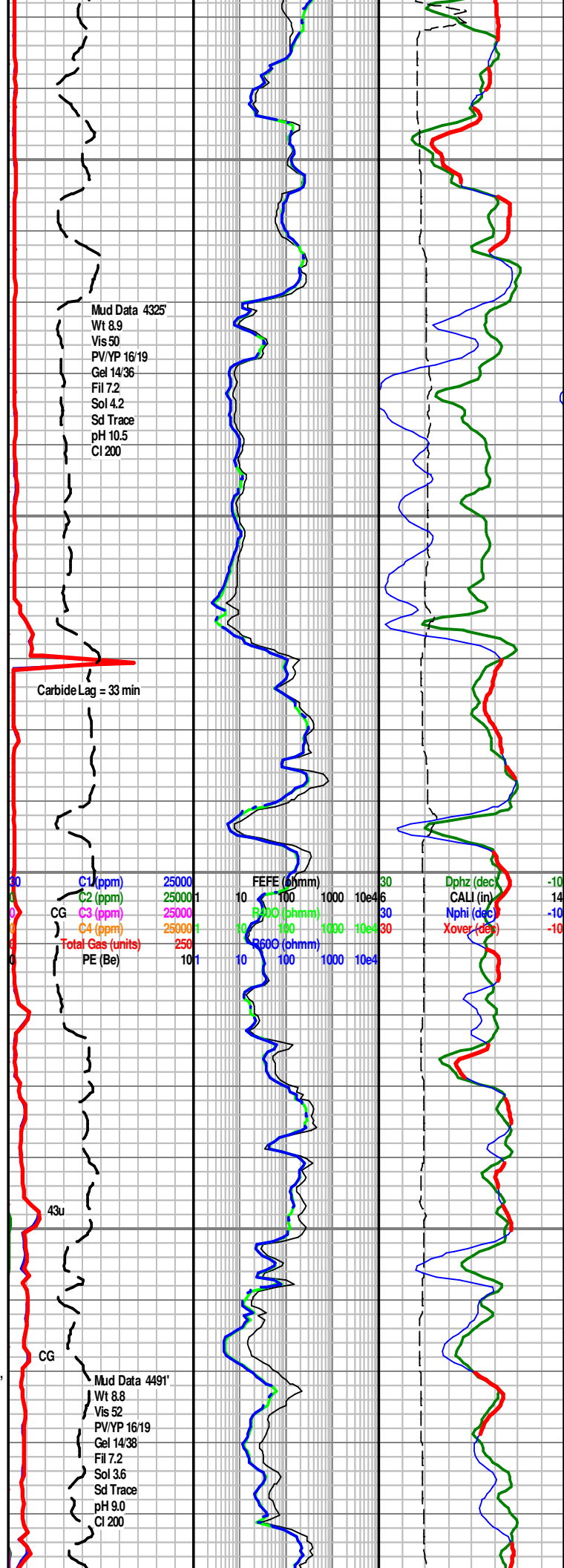
LS (40%): off whi-crm, microxl, v hd, chk matrix and calc infill, no est visual por, NFSOC

LS (60%): bcm dk gy, microxl, firm, chk matrix and calc infill, no est visual por, NFSOC

VIS 54 WT 8.7

LS (65%): dk gy, some lt gy microxl, firm, chk matrix and calc infill, no est visual por, v faint hydro odor, NFSC

LS (70%): off whi-crm, some lt gy, microxl, firm, chk matrix and calc infill, no est visual por, NFSOC

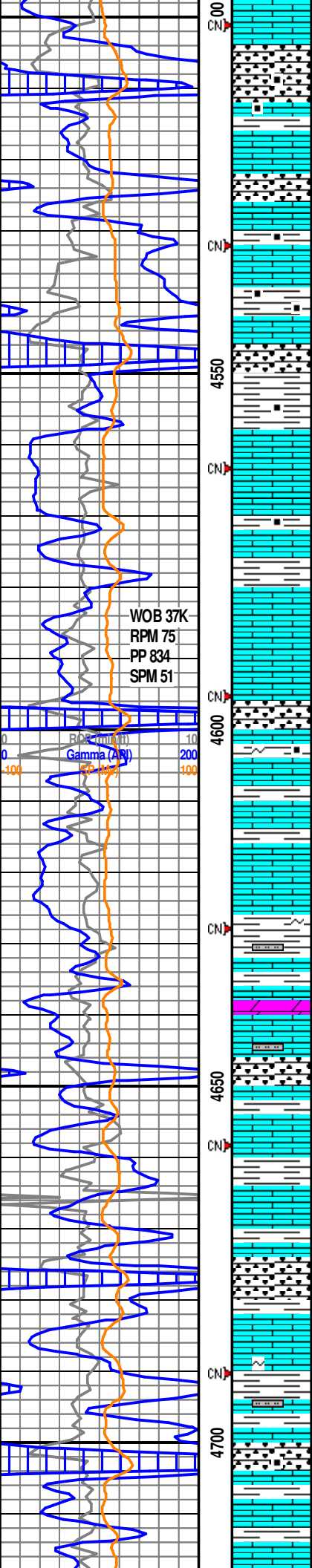


Mud Data 4325'
Wt 8.9
Vis 50
PV/YP 16/19
Gel 14/36
Fil 7.2
Sol 4.2
Sd Trace
pH 10.5
Cl 200

Carbide Lag = 33 min

Parameter	Value
C1 (ppm)	25000
C2 (ppm)	25000
C3 (ppm)	25000
C4 (ppm)	25000
Total Gas (units)	250
PE (Be)	10
FEFE (phmm)	10
RAO (phmm)	10
R600 (phmm)	10
Dphz (dec)	-10
CALI (in)	14
Nphi (dec)	-10
Xover (dec)	-10

Mud Data 4491'
Wt 8.8
Vis 52
PV/YP 16/19
Gel 14/38
Fil 7.2
Sol 3.6
Sd Trace
pH 9.0
Cl 200



Cherokee @ log 4504' (-99)

SH (40%): dk gy-blk, sft-firm, sbblky, sl silty, carb, calc

LS (75%): off whi-crm, some lt gy, microxl, soft, chk matrix and calc infill, no est visual por, NFSOC

SH (65%): dk gy-blk, sft, sbblky, sl silty, carb, calc

SH (75%): dk gy-blk, sft, sbblky, sl silty, carb, calc

VIS 43 WT 8.9

SH (50%): dk gy-blk, sft, sbblky, sl silty, carb, calc, mod hydro odor

LS (60%): off whi-crm, some lt gy, microxl, soft, chk matrix and calc infill, no est visual por, NFSOC

SH (15%): dk gy-blk, sft, sbblky, sl silty, carb, sl calc, tr glauc

LS (65%): off whi-crm, some lt gy, microxl, soft, chk matrix and calc infill, no est visual por, bri yel (mineral) flr, NSOC, tr glauc

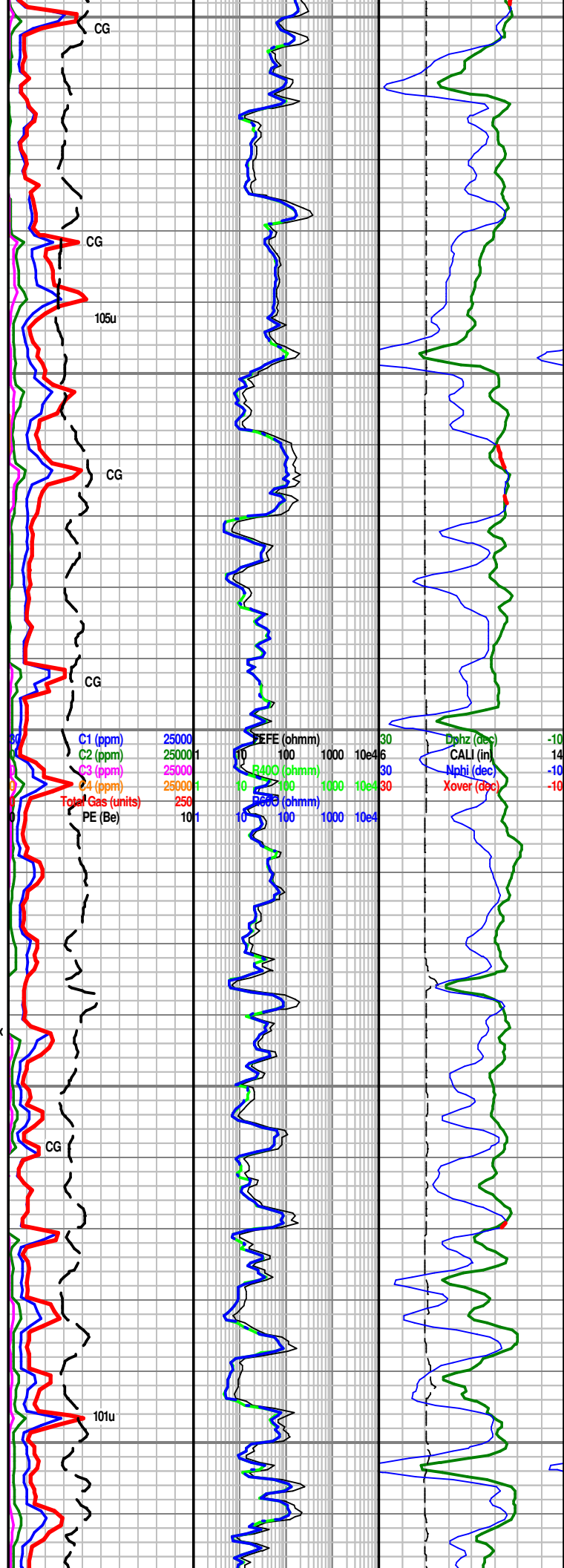
LS (70%): some whi-crm, bcm dk gy, microxl, soft-firm, chk matrix and calc infill, no est visual por, NFSOC

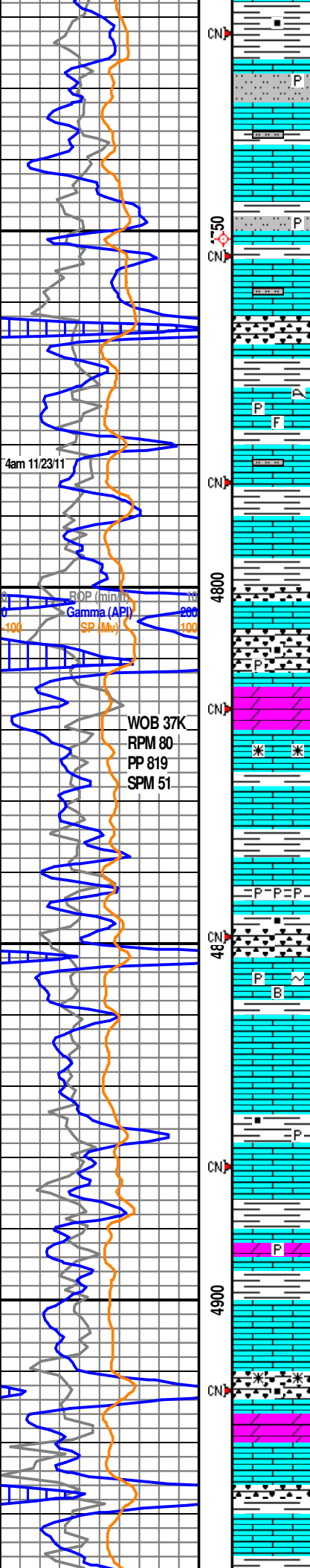
LS (65%): some whi-crm, bcm lt gy, microxl, soft, chk matrix and calc infill, no est visual por, NFSOC

VIS 52 WT 8.9

LS (75%): mostly lt gy, microxl, firm-v hd, chk matrix and calc infill, no est visual por, NFSOC, tr glauc

SH (40%): lt gy-dk gy, some blk, sft, sbblky, sl silty, some carb, v calc





SH (20%): dk gy-blk, sft, sbbiky, sl silty, carb, non calc

SLTST (5%): lt gy, sft, sl calc, tr pyr

SLTST (5%): lt gy, firm, sl calc, tr dism pyr

SURVEY INC 1.45 deg

LS (50%): lt gy, microxl, fri-hd, chk matrix and calc infill, no est visual por, NFSOC

VIS 49 WT 8.8

LS (40%): lt-dk gy, microxl, firm-hd, chk matrix and calc infill, foss coral, no est visual por, NFSOC, tr pyr

LS (35%): lt-dk gy, microxl, firm-hd, chk matrix and calc infill, no est visual por, NFSOC

Atoka @ log 4801' (-396)

SH (20%): dk gy-blk, sft, sbbiky, sl silty, carb, non calc, tr pyrite

LS (60%): lt-dk gy, microxl, firm, chk matrix and calc infill, no est visual por, NFSOC, tr calcite

SH (40%): lt-dk gy-blk, sft, sbbiky, sl silty, carb, sl calc, abnt pyrite

LS (55%): lt-dk gy, microxl, sft-firm, chk matrix and calc infill, no est visual por, NFSOC, tr glauc, tr pyr, tr bent

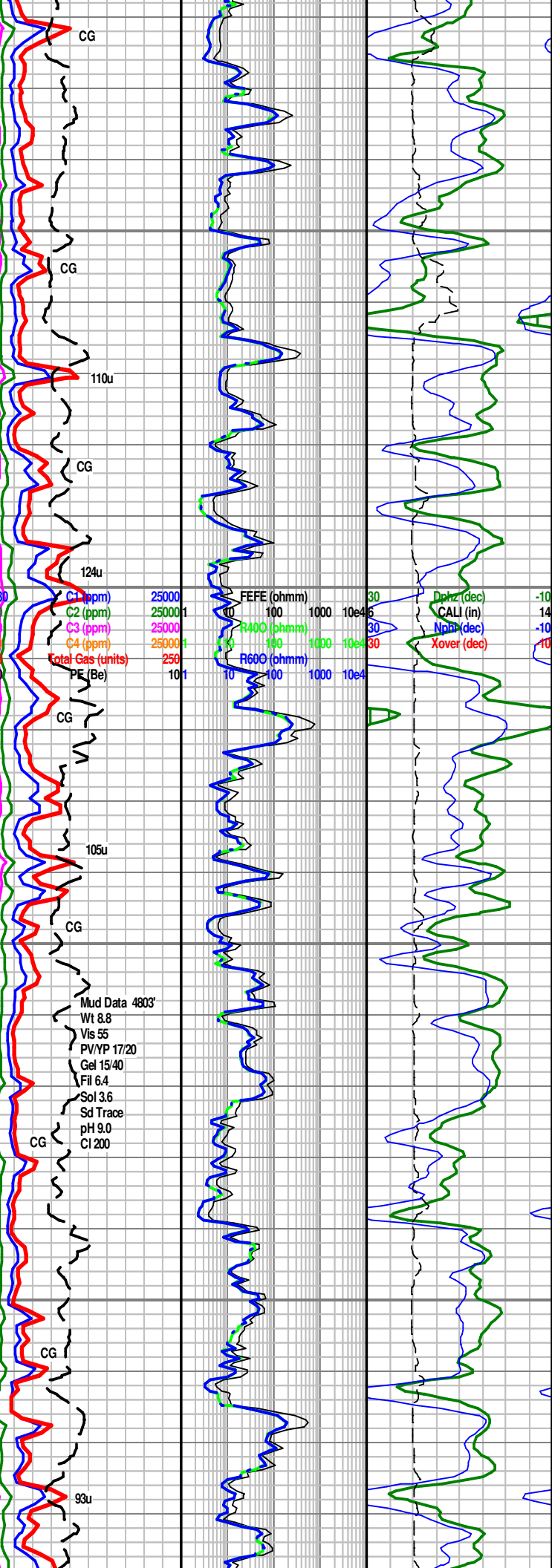
SH (35%): lt-dk gy-blk, sft, sbbiky, sl silty, carb, fiss, calc, tr pyr

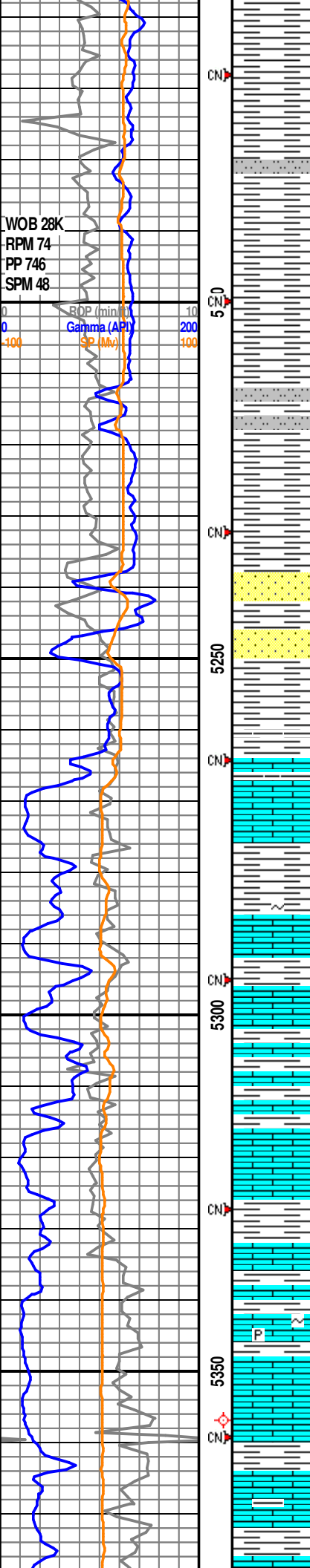
LS (35%): lt-dk gy, microxl, firm-hd, chk matrix and calc infill, no est visual por, NFSOC, tr pyr

VIS 51 WT 9.0

SH (50%): lt-dk gy, tr blk, sft-firm, sbbiky, sl silty, tr carb, v calc, tr calcite

LS (25%): mostly lt gy, microxl, firm-hd, chk matrix and calc infill, no est visual por, NFSOC





SH (65%): lt-dk gy, sft-firm, sbpty, sl silty, fiss, calc

SH (75%): lt-dk gy, sft-firm, sbpty, sl silty, fiss, calc

VIS 49 WT 9.1

SH (85%): lt-dk gy, sft-firm, sbpty, sl silty, fiss, calc

Lower F Sand Top @ log 5238' (-833)

SS (25%): dr-trans, mg-cg, sbang-sbrnd, w-m srt, abnt sil cmt w occ dolo cmt, tr dism mica, tr dism glauc, tr carb, v poor poro, v poor perm, v spotty lt brn oil stain, patchy bri whi flr, v wk residual ring cut when cuttings are crushed

SH (85%): lt-dk gy, sft, sbpty, sl silty, fiss, non calc

Morrow Shale Bottom @ log 5266' (-861)

SH (50%): lt-dk gy, sft, sbpty, sl silty, fiss, non calc

Miss St. Genevieve @ log 5298' (-893)

LS (30%): off whi-lt gy, microxl, soft, chk matrix and calc infill, no est visual por, dull yel (mineral) flr, NSOC, tr glauc

VIS 57 WT 9.1

SH (30%): lt-dk gy, sft, sbpty, sl silty, fiss, calc

LS (50%): off whi-lt gy, microxl, fri-firm, chk matrix and calc infill, no est visual por, dull yel (mineral) flr, NSOC, tr dism glauc, tr dism pyr

SURVEY INC 2.10 deg

LS (70%): off whi-lt gy few dk gy, microxl, firm, chk matrix and calc infill, no est visual por, dull yel (mineral) flr, NSOC

