

CEMENT BOND  
GAMMA RAY  
CCL

Company	MINERAL RESOURCES, INC.		
Well	MEADOWVIEW 3-1-22		
Field	WATTENBERG		
County	WELD	State CO	
Location:	APL # : 05-123-33968		
SHL: 2389' FSL & 2393' FEL NWSE			
BHL 678' FNL & 2003' FWL NENW			
SEC 22 TWP 5N RGE 66W			
Permanent Datum	GL	Elevation 4806	
Log Measured From	KB 16'		
Drilling Measured From	KB	Elevation KB. 4822 D.F. 4821 G.L. 4806	
Date	10-3-2011		
Run Number	1		
Depth Driller	8445		
Depth Logger	8351		
Bottom Logged Interval	8341		
Top Log Interval	2760		
Open Hole Size	7.875		
Type Fluid	WATER		
Density / Viscosity	1.0		
Max. Recorded Temp.	245		
Estimated Cement Top	3050		
Time Well Ready			
Time Logger on Bottom			
Equipment Number	3812		
Location	GREELEY		
Recorded By	M. JANDREAU		
Witnessed By	B. POTTEBAUM		
Borehole Record			
Run Number	Bit From To	Size Weight From To	
ONE	12.25 0	620'	
TWO	7.875 620'	8445'	
Casing Record			
Surface String	Size 8.875	Wgt/Ft 24#	Top 0 Bottom 620'
Prot. String			
Production String	4.5	11.6#	0 T.D.
Liner			

<<< Fold Here >>>

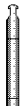
All interpretations are opinions based on inferences from electrical or other measurements and we cannot and do not guarantee the accuracy or correctness of any interpretation, and we shall not, except in the case of gross or willful negligence on our part, be liable or responsible for any loss, costs, damages, or expenses incurred or sustained by anyone resulting from any interpretation made by any of our officers, agents or employees. These interpretations are also subject to our general terms and conditions set out in our current Price Schedule.

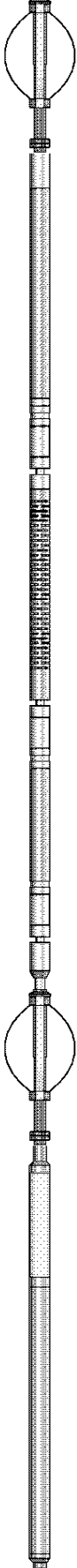
Comments

CORRELATED DOWN-HOLE 9' TO PSI OPEN HOLE LOG.

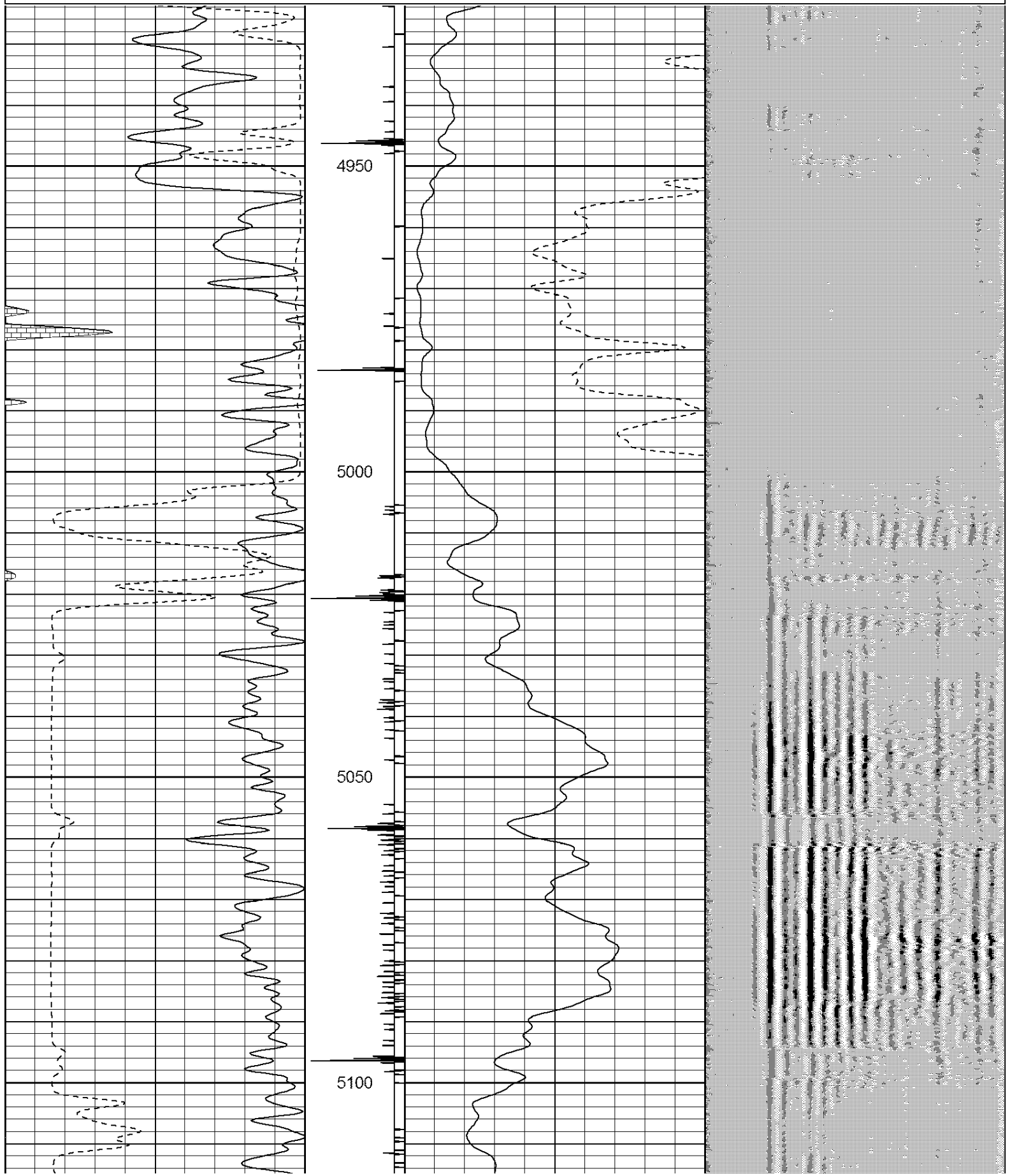
THIS IS THE SECOND WELL FROM THE EAST.

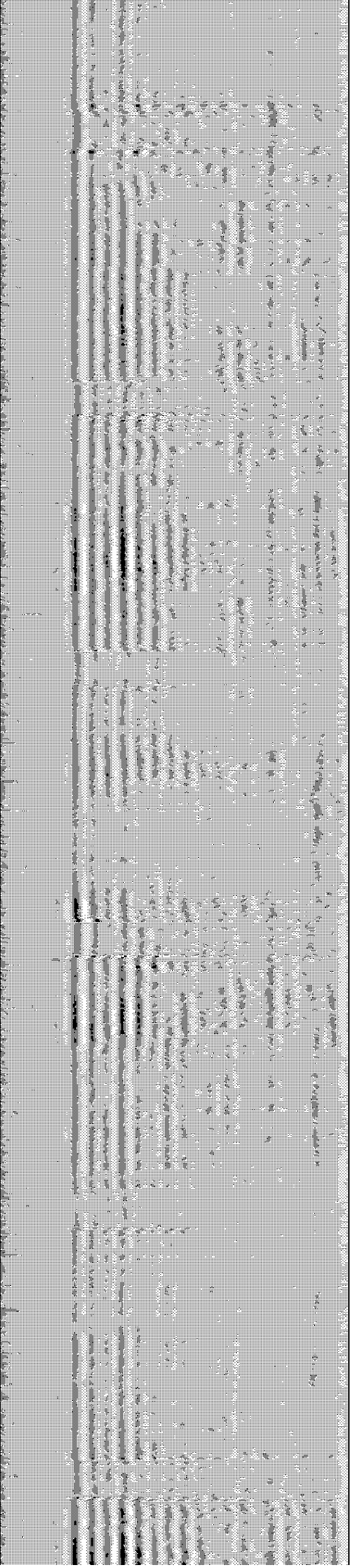
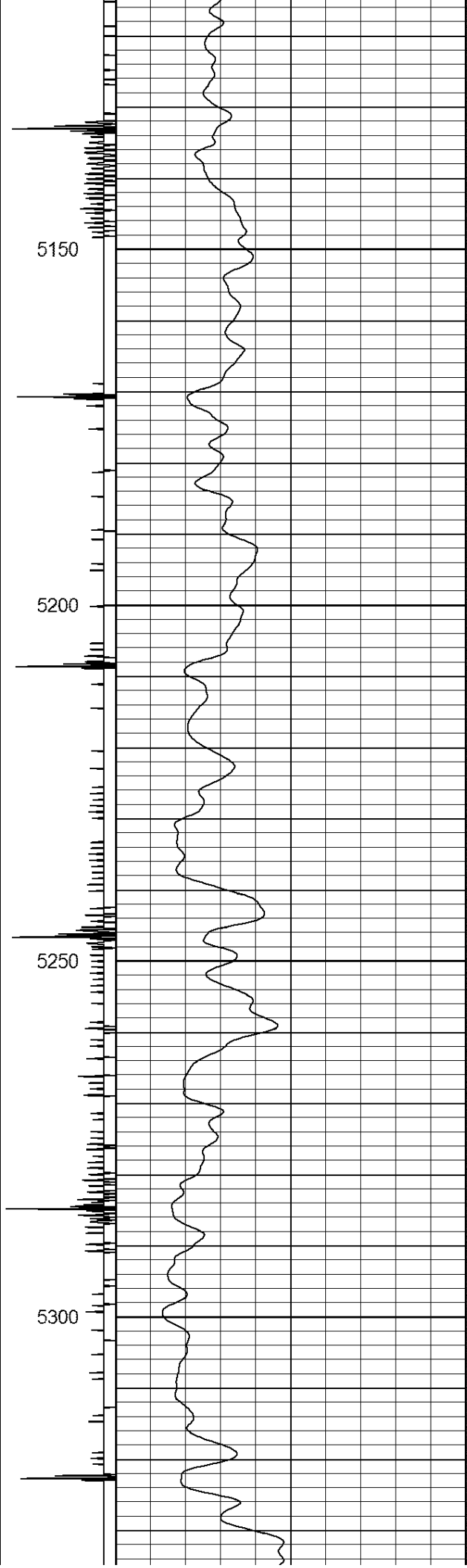
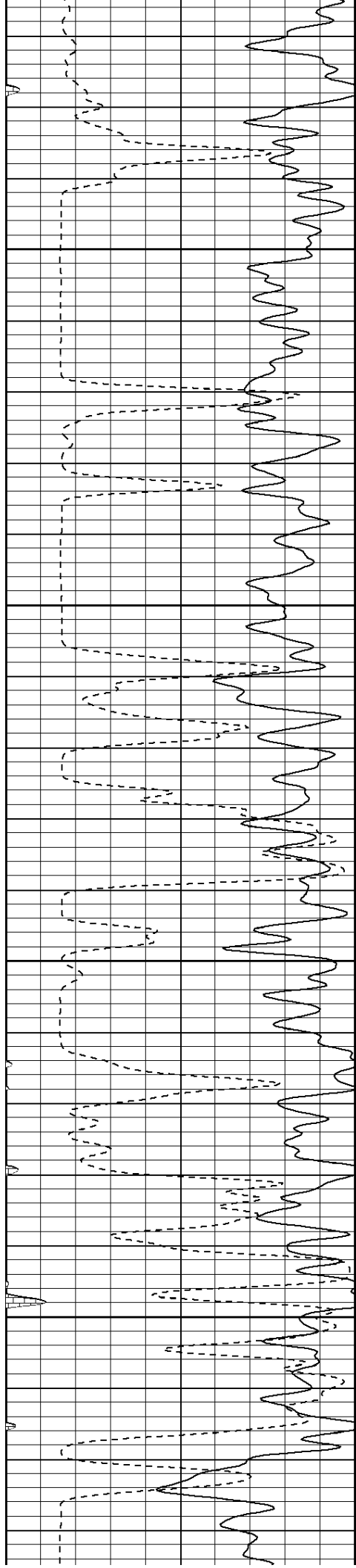
THANK YOU FOR USING IPS !!!!!!!

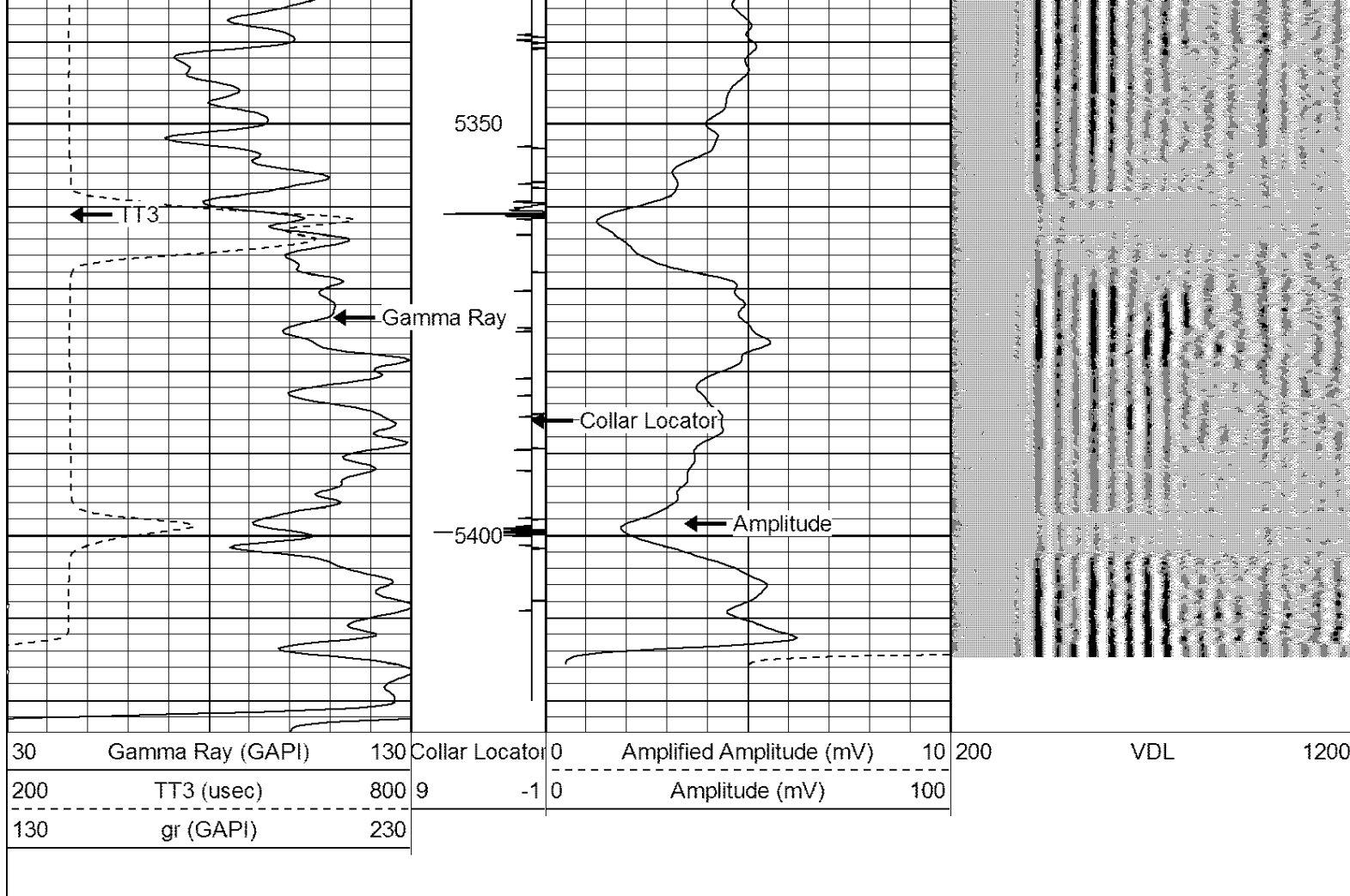
Sensor	Offset (ft)	Schematic	Description	Len (ft)	OD (in)	Wt (lb)
			STD-Standard (STNDRD) Standard Cable Head	1.00	1.44	10.00

				CENT-Probe (PTS_MONO)	1.67	2.75	35.00
WVF3	10.35			CBL-Probe (275) Probe 2.75" Dual Receiver Bond	8.92	2.75	60.00
WVF5	9.35						
CCL	3.67			CENT-Probe (PT_MONO2)	1.67	2.75	35.00
GR	2.00			GR-Probe (275) Probe 2.75" 4 Channel Pulse	4.50	2.75	30.00
Dataset: meadowview3-1-22.db: field/well/run1/pass7 Total Length: 17.75 ft Total Weight: 170.00 lb O.D. 2.75 in							

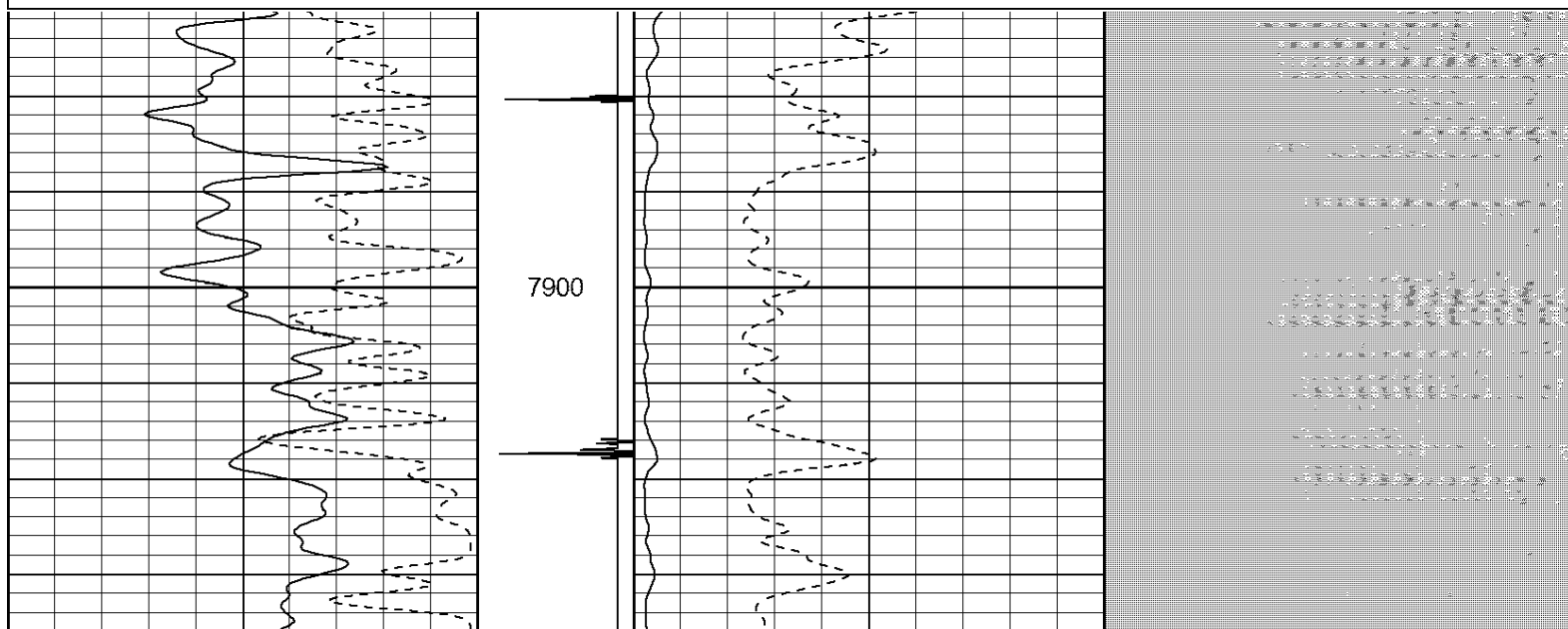
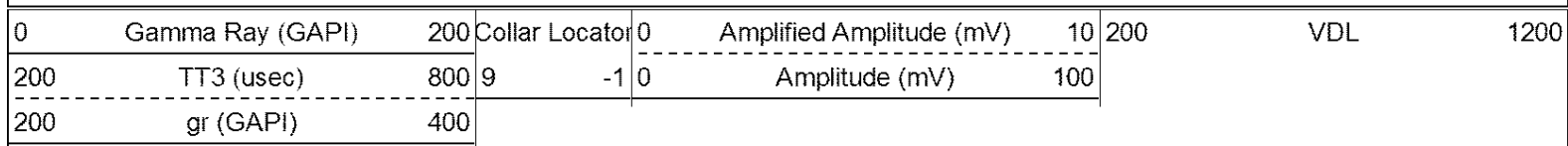
30	Gamma Ray (GAPI)	130	Collar Locator	0	Amplified Amplitude (mV)	10	200	VDL	1200
200	TT3 (usec)	800	9	-1	0	Amplitude (mV)	100		
130	gr (GAPI)	230							

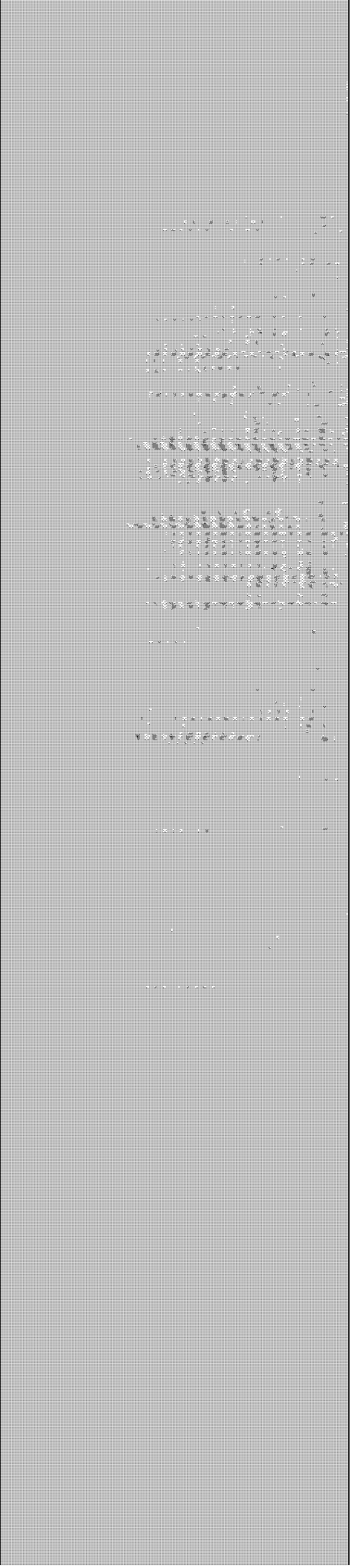
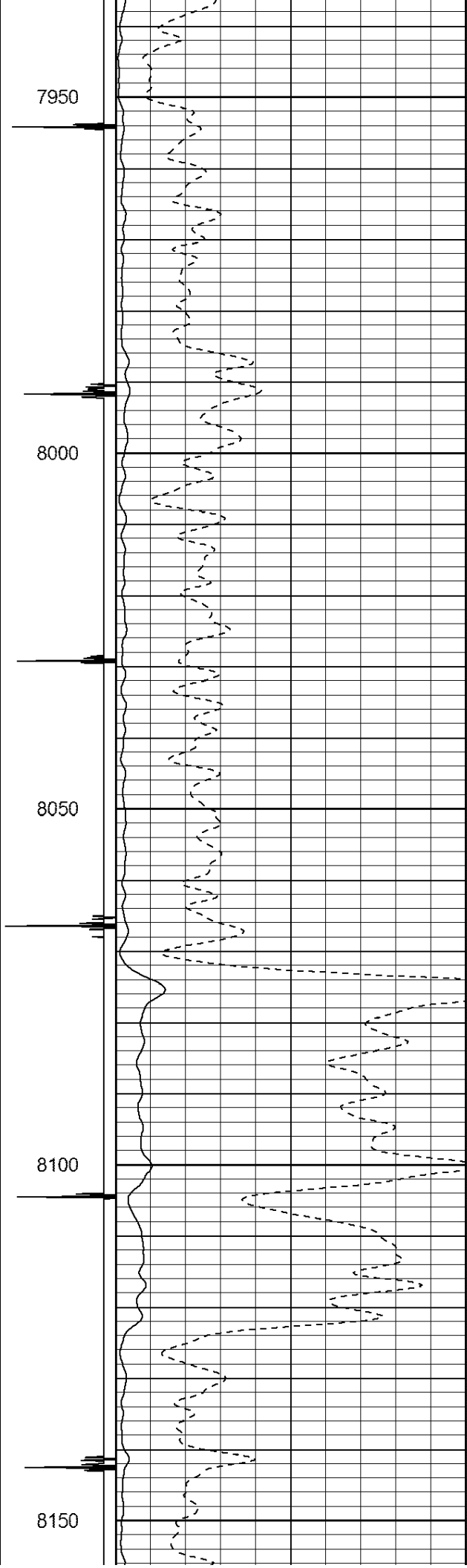
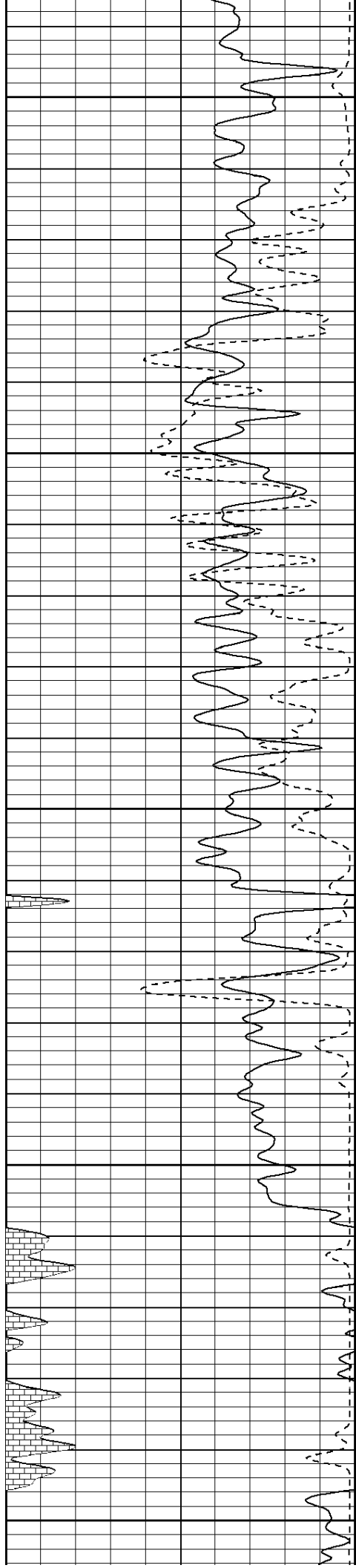


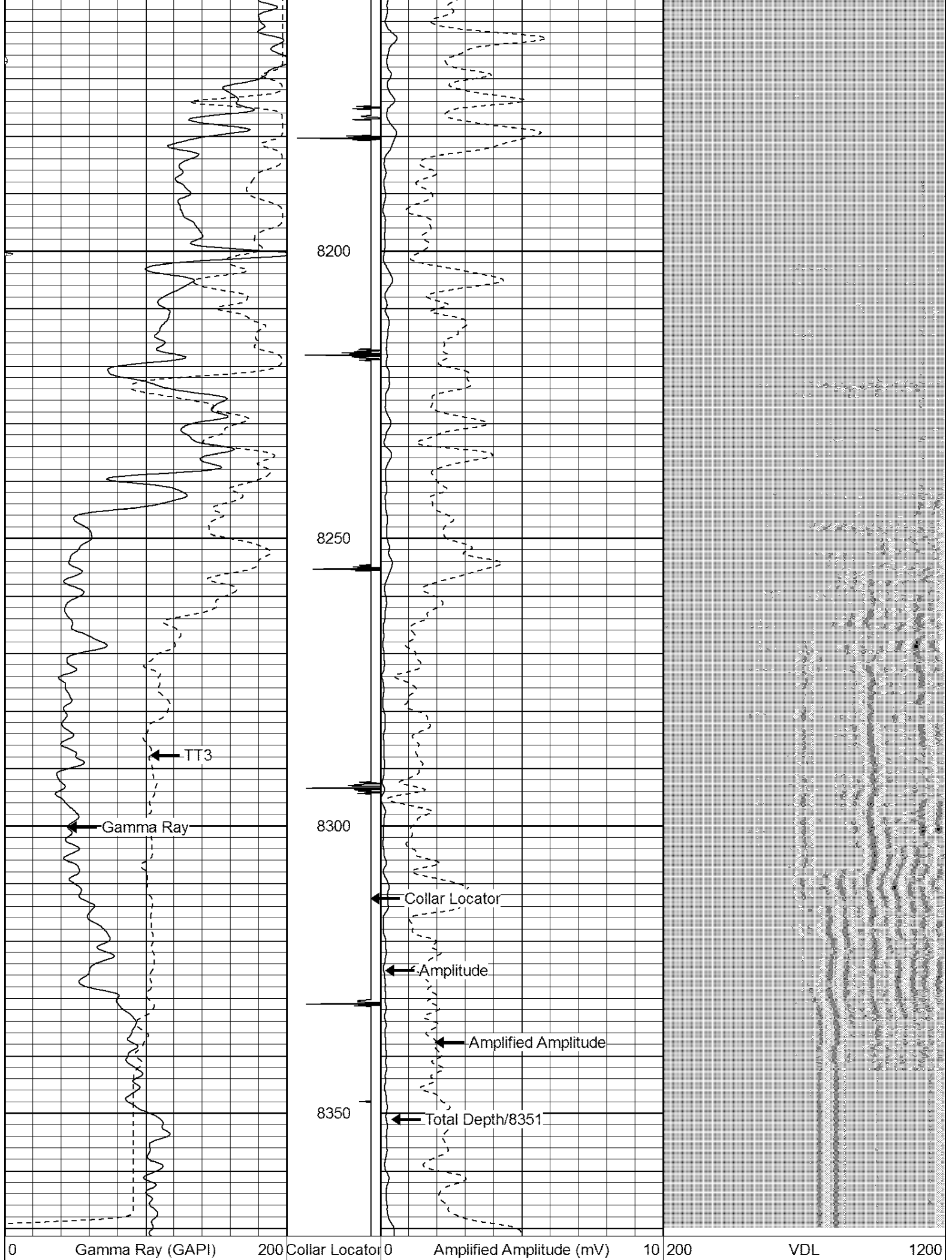




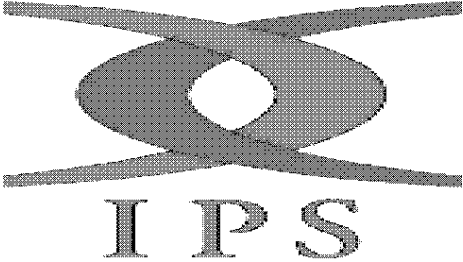
Database File: meadowview3-1-22.db  
 Dataset Pathname: pass6  
 Presentation Format: ipsdrb1  
 Dataset Creation: Mon Oct 03 17:01:40 2011 by Log Std Casedhole 09061  
 Charted by: Depth in Feet scaled 1:240







200	TT3 (usec)	800	9	-1	0	Amplitude (mV)	100
200	gr (GAPI)	400					

			Company	MINERAL RESOURCES, INC.			
			Well	MEADOWVIEW 3-1-22			
			Field	WATTENBERG			
			County	WELD			
			State	COLORADO			