
LARAMIE ENERGY II LLC EBUSINESS

**BRUTON 30-08B
WILD CAT
Garfield County , Colorado**

Cement Surface Casing
19-Jan-2012

Post Job Summary

The Road to Excellence Starts with Safety

Sold To #: 344919	Ship To #: 2903377	Quote #:	Sales Order #: 9141523
Customer: LARAMIE ENERGY II LLC EBUSINESS	Customer Rep: Clausen, Kelly		
Well Name: BRUTON	Well #: 30-08B	API/UWI #: 05-077-10103	
Field: WILD CAT	City (SAP): DENVER	County/Parish: Garfield	State: Colorado
Lat: N 39.248 deg. OR N 39 deg. 14 min. 52.03 secs.	Long: W 107.809 deg. OR W -108 deg. 11 min. 28.882 secs.		
Contractor: PRECISION 706	Rig/Platform Name/Num: PRECISION 706		
Job Purpose: Cement Surface Casing			
Well Type: Development Well	Job Type: Cement Surface Casing		
Sales Person: METLI, MARSHALL	Srv Supervisor: ARNOLD, EDWARD	MBU ID Emp #: 439784	

Job Personnel

HES Emp Name	Exp Hrs	Emp #	HES Emp Name	Exp Hrs	Emp #	HES Emp Name	Exp Hrs	Emp #
ARNOLD, EDWARD John	8	439784	BLUST, CHARLES Thomas	8	386662	EICKHOFF, ROBERT Edward	8	495311
RAMSEY, STANTON Michael	8	477609						

Equipment

HES Unit #	Distance-1 way	HES Unit #	Distance-1 way	HES Unit #	Distance-1 way	HES Unit #	Distance-1 way
10248065	42.5 mile	10592964	42.5 mile	10744549	42.5 mile	11560046	42.5 mile
11562538	42.5 mile	11583933	42.5 mile				

Job Hours

Date	On Location Hours	Operating Hours	Date	On Location Hours	Operating Hours	Date	On Location Hours	Operating Hours
1-19-2012	8	3						

TOTAL	Total is the sum of each column separately							
-------	--	--	--	--	--	--	--	--

Job

JOB						JOB TIME			
Formation Name							Date	Time	Time Zone
Formation Depth (MD)	Top			Bottom		Called Out	19 - Jan - 2012	07:00	MST
Form Type				BHST		On Location	19 - Jan - 2012	12:30	MST
Job depth MD	1550. ft			Job Depth TVD	1550. ft	Job Started	19 - Jan - 2012	16:46	MST
Water Depth				Wk Ht Above Floor	3. ft	Job Completed	19 - Jan - 2012	17:50	MST
Perforation Depth (MD)	From			To		Departed Loc	19 - Jan - 2012	20:00	MST

Well Data

Description	New / Used	Max pressure psig	Size in	ID in	Weight lbm/ft	Thread	Grade	Top MD ft	Bottom MD ft	Top TVD ft	Bottom TVD ft
Open Hole				12.25				.	1550.		
Surface Casing	Unknown		8.625	7.921	32.		J-55	.	1545.		

Tools and Accessories

Type	Size	Qty	Make	Depth	Type	Size	Qty	Make	Depth	Type	Size	Qty	Make
Guide Shoe					Packer					Top Plug	8.625	1	HES
Float Shoe					Bridge Plug					Bottom Plug			
Float Collar					Retainer					SSR plug set			
Insert Float										Plug Container	8.625	1	HES
Stage Tool										Centralizers			

Miscellaneous Materials

Gelling Agt	Conc	Surfactant	Conc	Acid Type	Qty	Conc	%
Treatment Fld	Conc	Inhibitor	Conc	Sand Type	Size	Qty	

Fluid Data

Stage/Plug #: 1	Fluid #	Stage Type	Fluid Name	Qty	Qty uom	Mixing Density lbm/gal	Yield ft ³ /sk	Mix Fluid Gal/sk	Rate bbl/min	Total Mix Fluid Gal/sk
-----------------	---------	------------	------------	-----	---------	------------------------	---------------------------	------------------	--------------	------------------------

Stage/Plug #: 1										
Fluid #	Stage Type	Fluid Name	Qty	Qty uom	Mixing Density lbm/gal	Yield ft ³ /sk	Mix Fluid Gal/sk	Rate bbl/min	Total Mix Fluid Gal/sk	
1	Fresh Water		20.00	bbl	8.34	.0	.0	4		
2	Lead Cement	VERSACEM (TM) SYSTEM (452010)	225.0	sacks	12.3	2.38	13.77	7	13.77	
3	Tail Cement	SWIFTCES (TM) SYSTEM (452990)	200.0	sacks	14.2	1.43	6.85	7	6.85	
6.85 Gal		FRESH WATER								
4	Displacement		92.00	bbl	8.33	.0	.0	8		
Calculated Values		Pressures		Volumes						
Displacement	92.6	Shut In: Instant		Lost Returns		Cement Slurry	146.2	Pad		
Top Of Cement	SURFACE	5 Min		Cement Returns	46	Actual Displacement	92.6	Treatment		
Frac Gradient		15 Min		Spacers	20	Load and Breakdown		Total Job	258.8	
Rates										
Circulating	RIG	Mixing	7	Displacement	8	Avg. Job	7			
Cement Left In Pipe	Amount	25 ft	Reason	Shoe Joint						
Frac Ring # 1 @	ID	Frac ring # 2 @	ID	Frac Ring # 3 @	ID	Frac Ring # 4 @	ID			
The Information Stated Herein Is Correct				Customer Representative Signature						

The Road to Excellence Starts with Safety

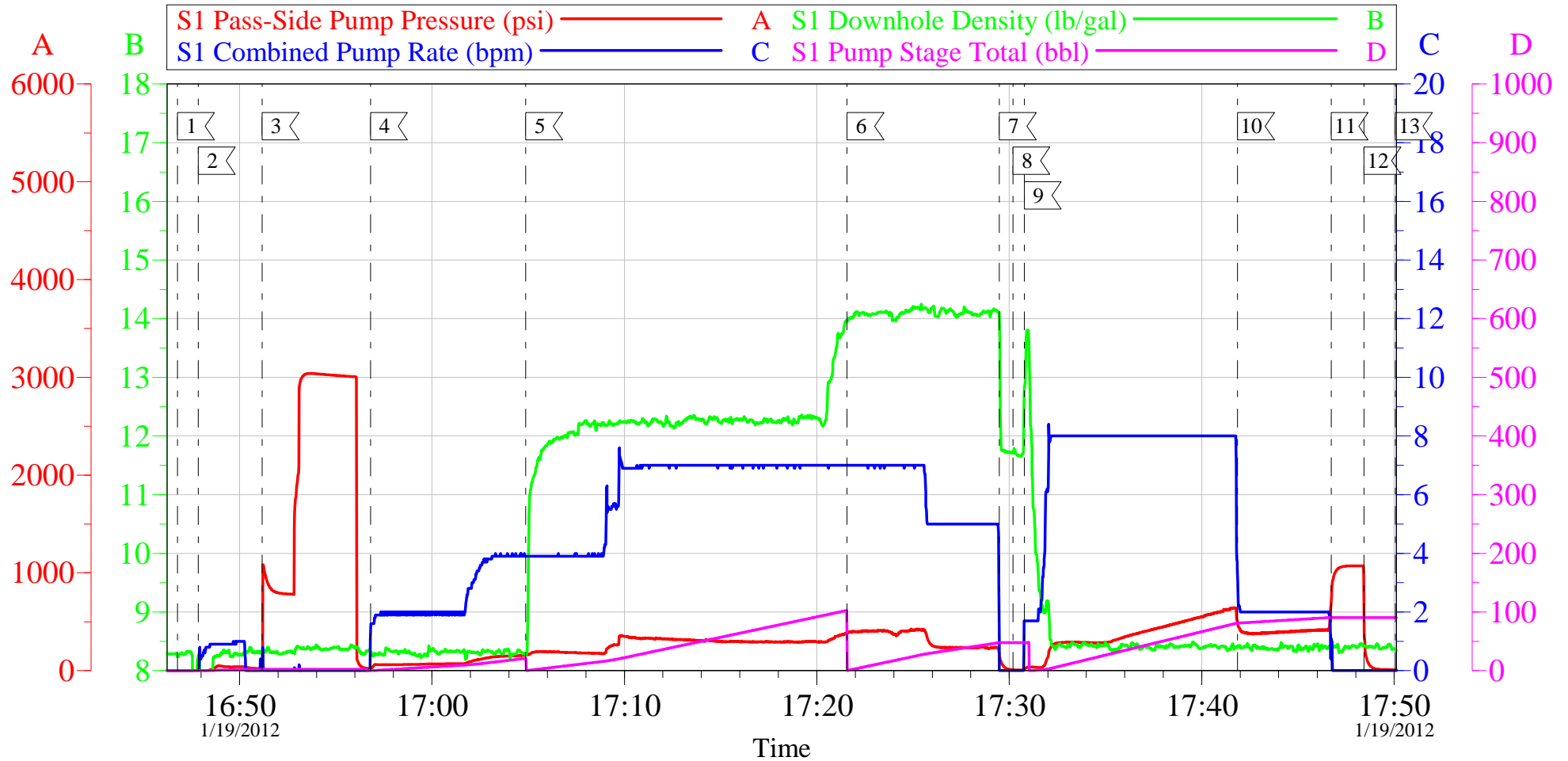
Sold To #: 344919	Ship To #: 2903377	Quote #:	Sales Order #: 9141523
Customer: LARAMIE ENERGY II LLC EBUSINESS		Customer Rep: Clausen, Kelly	
Well Name: BRUTON	Well #: 30-08B		API/UWI #: 05-077-10103
Field: WILD CAT	City (SAP): DENVER	County/Parish: Garfield	State: Colorado
Legal Description:			
Lat: N 39.248 deg. OR N 39 deg. 14 min. 52.03 secs.		Long: W 107.809 deg. OR W -108 deg. 11 min. 28.882 secs.	
Contractor: PRECISION 706		Rig/Platform Name/Num: PRECISION 706	
Job Purpose: Cement Surface Casing			Ticket Amount:
Well Type: Development Well		Job Type: Cement Surface Casing	
Sales Person: METLI, MARSHALL		Srvc Supervisor: ARNOLD, EDWARD	MBU ID Emp #: 439784

Activity Description	Date/Time	Cht #	Rate bbl/min	Volume bbl		Pressure psig		Comments
				Stage	Total	Tubing	Casing	
Call Out	01/19/2012 07:00							No Add Hours, No Derrick Charge.
Pre-Convoy Safety Meeting	01/19/2012 09:45							Including entire cement crew.
Crew Leave Yard	01/19/2012 10:00							
Arrive At Loc	01/19/2012 12:30							Rig starting to run casing.
Assessment Of Location Safety Meeting	01/19/2012 12:45							Water; PH 7; KCL 250; So4 <200; Fe 0; Calcium 120; Chlorides 0; Temp 46; 280 TDS .
Pre-Rig Up Safety Meeting	01/19/2012 15:00							Including entire cement crew.
Rig-Up Equipment	01/19/2012 15:10							1 Elite # 5; 1 660 bulk truck; 1 400 body load; 1 hard line to floor; 2 lines to upright. 8.625" compact head.
Rig-Up Completed	01/19/2012 16:00							
Pre-Job Safety Meeting	01/19/2012 16:15							Including everyone on location.
Start Job	01/19/2012 16:46							TD 1550; TP 1545; SJ 25; OH 12.25; Casing 8.625" 32# J-55; Mud 10.8 ppg.
Pump Water	01/19/2012 16:47		2	2			70.0	Fill lines with fresh water.
Test Lines	01/19/2012 16:51					2940.0		Good pressure test, no leaks.
Pump Spacer 1	01/19/2012 16:56		4	20			150.0	20 BBL fresh water spacer.
Pump Lead Cement	01/19/2012 17:04		7	95.3			380.0	225 sks Lead Cement, 12.3 ppg, 2.38 cf3, 13.77 gal/sk.

Activity Description	Date/Time	Cht #	Rate bbl/min	Volume bbl		Pressure psig		Comments
				Stage	Total	Tubing	Casing	
Pump Tail Cement	01/19/2012 17:21		7	50.9			235.0	200 sks Tail Cement, 14.2 ppg, 1.43 cf3, 6.85 gal/sk.
Shutdown	01/19/2012 17:29							
Drop Plug	01/19/2012 17:30							Plug left container.
Pump Displacement	01/19/2012 17:30		8	82.6			640.0	Fresh water displacement.
Slow Rate	01/19/2012 17:41		2	10			414.0	Slow rate for last 10 BBL's.
Bump Plug	01/19/2012 17:46				92.6		1064.0	Bumped plug, took 500 PSI over. 46 BBL's of good cement to surface.
Check Floats	01/19/2012 17:48							Floats held, .5 BBL back
End Job	01/19/2012 17:50							
Pre-Rig Down Safety Meeting	01/19/2012 18:00							Including entire cement crew.
Rig-Down Equipment	01/19/2012 18:10							
Rig-Down Completed	01/19/2012 19:30							
Pre-Convoy Safety Meeting	01/19/2012 19:45							Including entire cement crew.
Crew Leave Location	01/19/2012 20:00							Crew leave location for Service Center or another location.
Other	01/19/2012 20:00							Thank You for using Halliburton. Ed Arnold and Crew.

LARAMIE II - BURTON 30-08B

8.625 SURFACE



Customer: LARAMIE II
Well Description: BURTON 30-08B
Company Rep: CORRY CLAUSEN

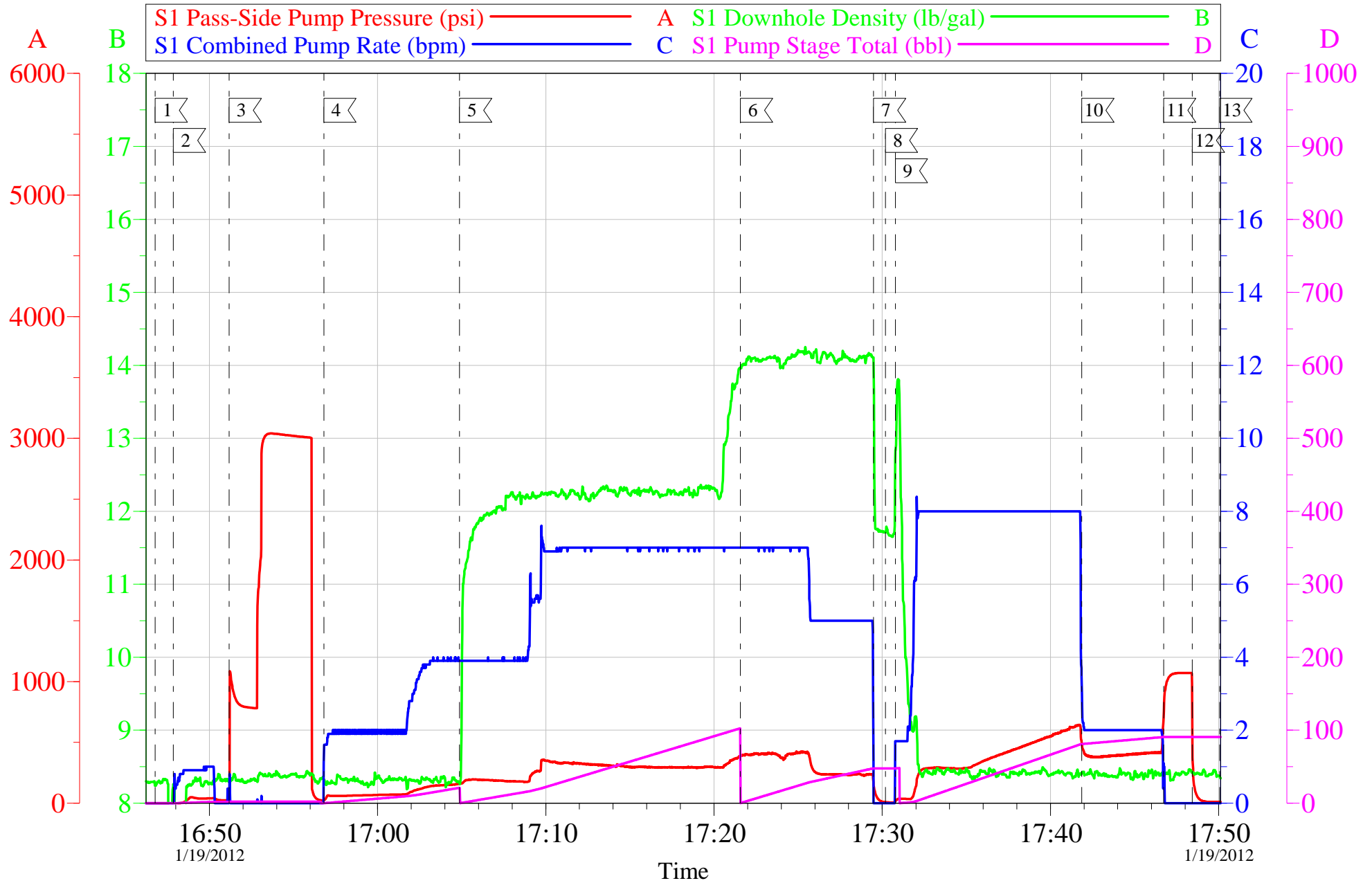
Job Date: 19-Jan-2012
Job Type: SURFACE
Cement Supervisor: ED ARNOLD

Sales Order #: 9141523
ADC Used: YES
Elite #5: ROB EICKHOFF

OptiCem v6.4.10
19-Jan-12 18:04

LARAMIE II - BURTON 30-08B

8.625 SURFACE



Customer: LARAMIE II	Job Date: 19-Jan-2012	Sales Order #: 9141523
Well Description: BURTON 30-08B	Job Type: SURFACE	ADC Used: YES
Company Rep: CORRY CLAUSEN	Cement Supervisor: ED ARNOLD	Elite #5: ROB EICKHOFF

OptiCem v6.4.10
19-Jan-12 18:05

Sales Order #: 9141523	Line Item: 10	Survey Conducted Date: 1/19/2012
Customer: LARAMIE ENERGY II LLC EBUSINESS		Job Type (BOM): CMT SURFACE CASING BOM
Customer Representative: CORY CLAUSEN		API / UWI: (leave blank if unknown) 05-077-10103
Well Name: BRUTON		Well Number: 30-08B
Well Type: Development Well	Well Country: United States of America	
H2S Present:	Well State: Colorado	Well County: Garfield

Dear Customer,

We hope that you were satisfied with the service quality of this job performed by Halliburton. It is the aim of our management and service personnel to deliver equipment and service of a standard unmatched in the service sector of the energy industry.

Please take the time to let us know if our performance met with your satisfaction. Please be as critical as possible to ensure we constantly improve our service. Your comments are of great value to us and are intended for the exclusive use of Halliburton.

CUSTOMER SATISFACTION SURVEY

CATEGORY	CUSTOMER SATISFACTION RESPONSE	
Survey Conducted Date	The date the survey was conducted	1/19/2012
Survey Interviewer	The survey interviewer is the person who initiated the survey.	EDWARD ARNOLD (HX46731)
Customer Participation	Did the customer participate in this survey? (Y/N)	Yes
Customer Representative	Enter the Customer representative name	CORY CLAUSEN
HSE	Was our HSE performance satisfactory? Circle Y or N	Yes
Equipment	Were you satisfied with our Equipment? Circle Y or N	Yes
Personnel	Were you satisfied with our people? Circle Y or N	Yes
Customer Comment	Customer's Comment	

CUSTOMER SIGNATURE

Sales Order #: 9141523	Line Item: 10	Survey Conducted Date: 1/19/2012
Customer: LARAMIE ENERGY II LLC EBUSINESS		Job Type (BOM): CMT SURFACE CASING BOM
Customer Representative: CORY CLAUSEN		API / UWI: (leave blank if unknown) 05-077-10103
Well Name: BRUTON		Well Number: 30-08B
Well Type: Development Well	Well Country: United States of America	
H2S Present:	Well State: Colorado	Well County: Garfield

KEY PERFORMANCE INDICATORS

General	
Survey Conducted Date The date the survey was conducted	1/19/2012

Cementing KPI Survey	
Type of Job Select the type of job. (Cementing or Non-Cementing)	0
Select the Maximum Deviation range for this Job What is the highest deviation for the job you just completed? This may not be the maximum well deviation.	Vertical
Total Operating Time (hours) Total Operating Hours Including Rig-up, Pumping, Rig-down. Enter in decimal format.	5
HSE Incident, Accident, Injury HSE Incident, Accident, Injury. This should be recordable incidents only.	No
Was the job purpose achieved? Was the job delivered correctly as per customer agreed design?	Yes
Operating Hours (Pumping Hours) Total number of hours pumping fluid on this job. Enter in decimal format.	1.25
Customer Non-Productive Rig Time (hrs) Lost time due to Halliburton in the start, execution, or completion of an ordered service or product, or delays in a follow-on service. Enter in decimal format. 0 if none.	0
Type of Rig Classification Job Was Performed Type Of Rig (classification) Job Was Performed On	Drilling Rig (Portable)
Number Of JSAs Performed Number Of Jsas Performed	5
Number of Unplanned Shutdowns Unplanned shutdown is when injection stops for any period of time.	0
Was this a Primary Cement Job (Yes / No)	Yes

Sales Order #: 9141523	Line Item: 10	Survey Conducted Date: 1/19/2012
Customer: LARAMIE ENERGY II LLC EBUSINESS		Job Type (BOM): CMT SURFACE CASING BOM
Customer Representative: CORRY CLAUSEN		API / UWI: (leave blank if unknown) 05-077-10103
Well Name: BRUTON		Well Number: 30-08B
Well Type: Development Well	Well Country: United States of America	
H2S Present:	Well State: Colorado	Well County: Garfield

Primary Cement Job= Casing job, Liner job, or Tie-back job.	
Did We Run Wiper Plugs? Did We Run Top And Bottom Casing Wiper Plugs?	Top
Mixing Density of Job Stayed in Designed Density Range (0-100%) Density Range defined as +/- .20 ppg. Calculation: Total BBLs cement mixed at designed density divided by total BBLs of cement multiplied by 100	98
Was Automated Density Control Used? Was Automated Density Control (ADC) Used ?	Yes
Pump Rate (percent) of Job Stayed At Designed Pump Rate Pump Rate range defined as +/- 1bbl/min. Calculation: Total BBLs of fluid pumped at the designed rate divided by Total BBLs of fluid pumped, multiplied by 100	99
Nbr of Remedial Sqz Jobs Rqd - Competition Number Of Remedial Squeeze Jobs Required After Primary Job Performed By Competition	0
Nbr of Remedial Plug Jobs Rqd - HES Number Of Remedial Plug Jobs Needed After Primary Plug Pumped By HES	0
Nbr of Remedial Sqz Jobs Rqd - HES Number Of Remedial Squeeze Jobs Required After Primary Job Performed By HES	0