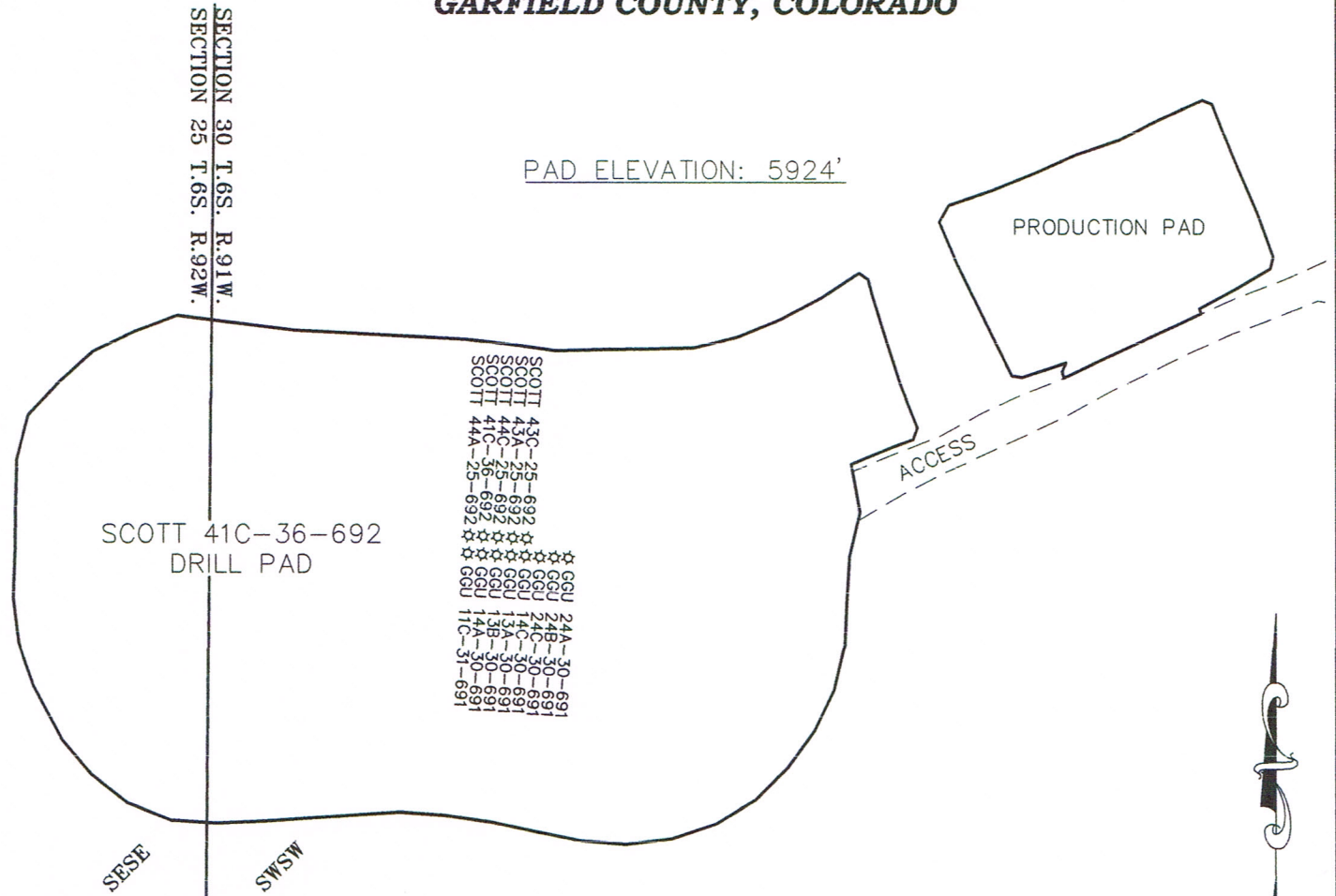


**SCOTT 41C-36-692 PAD AS-BUILTS**  
**SW<sup>1</sup>/<sub>4</sub>SW<sup>1</sup>/<sub>4</sub> SEC. 30, T. 6 S., R. 91 W., 6TH P.M.**  
**GARFIELD COUNTY, COLORADO**



**NOTES:**

- 1) SURVEY DATE: 3/6/12
- 2) INSTRUMENT OPERATOR: T.BARNETT
- 3) PDOP MASK SET TO 6, ELEV MASK SET TO 15'
- 4) LATS AND LONGS ARE IN DECIMAL DEGREE FORMAT
- 5) DATUM IS COLORADO STATE PLANE, CENTRAL ZONE, NAD 83

**SURFACE LOCATION**

	WELL NAME	FSL	FWL	LATITUDE	LONGITUDE
1	SCOTT 41C-36-692	446	151	39.492437	-107.605384
2	SCOTT 44A-25-692	447	143	39.492437	-107.605412
3	SCOTT 44C-25-692	446	159	39.492436	-107.605355
4	SCOTT 43A-25-692	445	168	39.492436	-107.605326
5	SCOTT 43C-25-692	445	175	39.492435	-107.605298
6	GGU 13B-30-691	436	159	39.492409	-107.605357
7	GGU 13A-30-691	436	167	39.492408	-107.605328
8	GGU 14C-30-691	435	175	39.492408	-107.605300
9	GGU 24C-30-691	435	183	39.492407	-107.605272
10	GGU 24B-30-691	435	191	39.492407	-107.605243
11	GGU 24A-30-691	434	198	39.492407	-107.605216
12	GGU 14A-30-691	436	151	39.492409	-107.605385
13	GGU 11C-31-691	437	143	39.492410	-107.605413

I, JAMES A. KALMON, A REGISTERED LAND SURVEYOR IN THE STATE OF COLORADO DO HEREBY CERTIFY THAT THE LOCATION OF THE WELLS SHOWN HEREON ARE BASED ON AN ACTUAL FIELD SURVEY CONDUCTED BY ME OR UNDER MY DIRECT SUPERVISION AND CHECKING AND THAT THIS MAP IS A TRUE REPRESENTATION THEREOF.

*[Signature]*  
 3-6-12

JAMES A. KALMON, COLORADO REGISTRATION NO. 38050  
 FOR AND ON BEHALF OF ECLIPSE SURVEYING, INC.



**ECLIPSE**  
 surveying

111 E. THIRD ST., SUITE 208, RIFLE, CO 81650  
 (970) 625-3048

REV. DATE:

SCALE:

DATE:

SHEET:

PROJECT:

DFT:

1" = 100'

3/6/12

1 OF 1

SCOTT 41C

TAB



**Bill Barrett Corporation**

**SCOTT 41C-36-692 PAD**  
**AS-BUILTS**