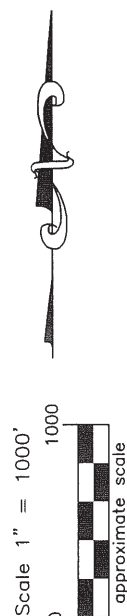
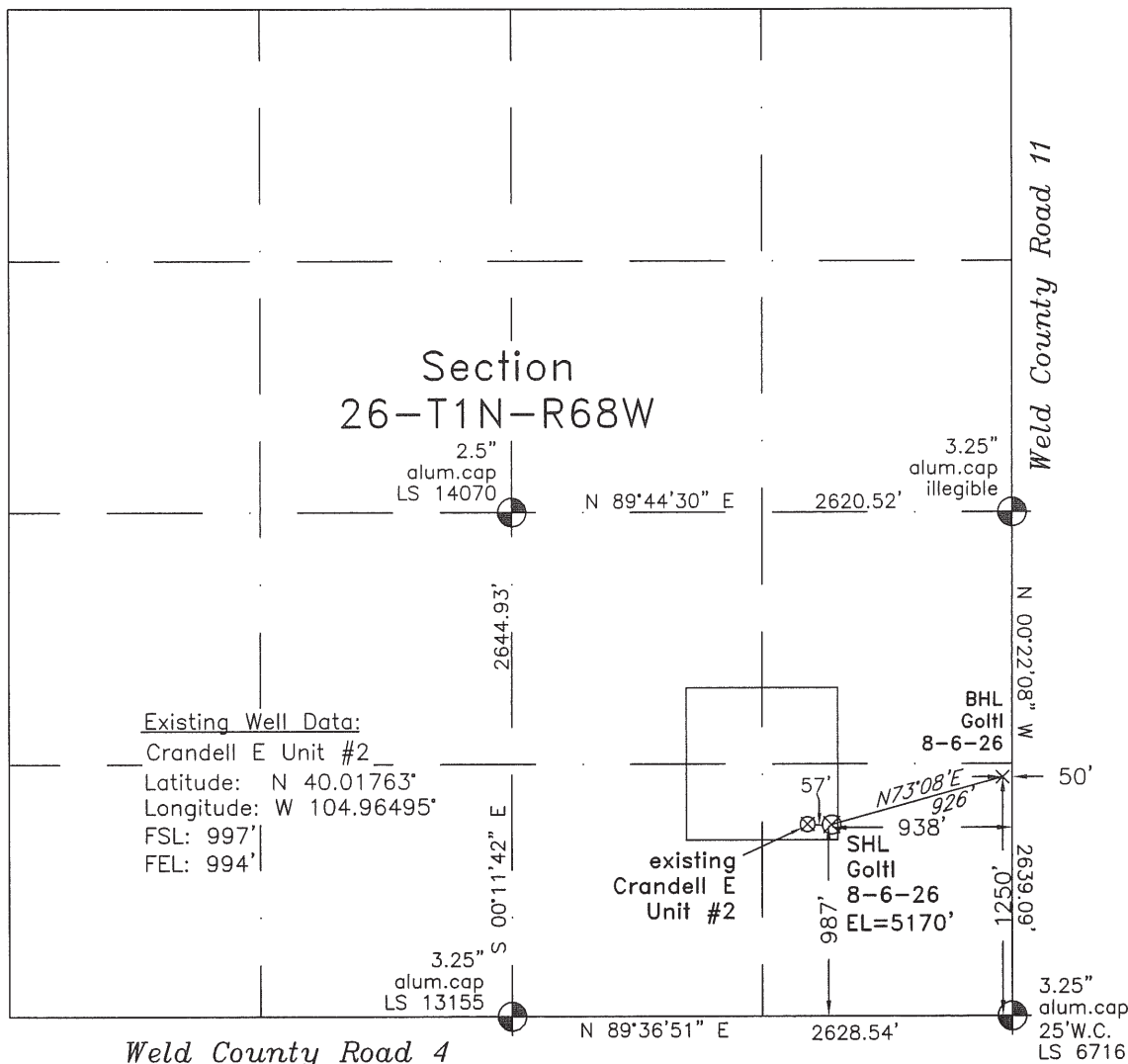


WELL LOCATION CERTIFICATE

THIS MAP DOES NOT REPRESENT A BOUNDARY SURVEY

Weld County Road 6

I-25 Frontage Road



LEGEND
— found survey monument
(c) — calculated dimension

In accordance with a request from Doug Pearlman of EnCana Oil & Gas (USA) Inc., Frederick Land Surveying, Inc. has determined the location of the **Golt1 8-6-26** well site to be SHL: 987' FSL and 938' FEL, (BHL: 1250' FSL and 50' FEL) as measured at ninety (90) degrees from the section lines of Section 26, Township 1 North, Range 68 West, 6th Principal Meridian, City and County of Broomfield, CO.

Proposed Surface Hole Data:

Latitude: N 40.01761° (BHL 40.01833°)

Longitude: W 104.96475° (BHL 104.96158°)

Nearest: Building 563' northeast

Above Ground Utility 903' east

Public Road 923' east

Railroad 4100' northeast

Property Line 375' west

PDOP: 1.9

Notes:

- 1) Bearings and distances based upon NAD 83 Colorado North State Plane Coordinates using RTK GPS observations taken on 3/15/2010 by operator Craig Burke.
- 2) Conversion factor to ground (1.000280465).
- 3) Elevations based on NAVD 88 GPS heights and Geoid 2003 corrections.
- 4) See improvement map for visible improvements within 400 feet of pad site.
- 5) The location falls on natural ground.

NOTICE: According to Colorado law you must commence any legal action based upon any defect in this W.L.C. within three years after you first discover such defect. In no event may any action based upon any defect in this W.L.C. be commenced more than ten years from this said date of the certification shown hereon.

I hereby certify that this Well Location Certificate was prepared by me or under my direct supervision on 3/23/10 for and on behalf of EnCana Oil & Gas (USA) Inc. and that it is not a Land Survey Plat and that it is not to be relied upon for establishment of fences, buildings or other future improvement lines.

Alex Rondal Perkins, #34176
Job #: 09006.006 3-25-2010