
WILLIAMS PRODUCTION RMT INC EBUSINE

**GM 333-27
GRAND VALLEY
Garfield County , Colorado**

Cement Surface Casing
23-Mar-2011

Post Job Summary

The Road to Excellence Starts with Safety

Sold To #: 300721	Ship To #: 2842262	Quote #:	Sales Order #: 8027249
Customer: WILLIAMS PRODUCTION RMT INC EBUSINE		Customer Rep: GEARY SCOTT	
Well Name: GM		Well #: 333-27	API/UWI #: 05-045-19741
Field: GRAND VALLEY	City (SAP): PARACHUTE	County/Parish: Garfield	State: Colorado
Lat: N 39.491 deg. OR N 39 deg. 29 min. 27.823 secs.		Long: W 108.095 deg. OR W -109 deg. 54 min. 17.68 secs.	
Contractor: H&P 278		Rig/Platform Name/Num: H&P 278	
Job Purpose: Cement Surface Casing			
Well Type: Development Well		Job Type: Cement Surface Casing	
Sales Person: KOHL, KYLE		Srvc Supervisor: PHILLIPS, MARK	MBU ID Emp #: 445272

Job Personnel

HES Emp Name	Exp Hrs	Emp #	HES Emp Name	Exp Hrs	Emp #	HES Emp Name	Exp Hrs	Emp #
BURKE, BRENDAN Patrick	9	487782	JENSEN, JESSE Robert	9	478774	PHILLIPS, MARK Bejar	9	445272
WALPOLE, DARREN Livingston	9	485294						

Equipment

HES Unit #	Distance-1 way	HES Unit #	Distance-1 way	HES Unit #	Distance-1 way	HES Unit #	Distance-1 way
10025041	60 mile	10741119	60 mile	10951250	60 mile	11360871	60 mile
11542767	60 mile						

Job Hours

Date	On Location Hours	Operating Hours	Date	On Location Hours	Operating Hours	Date	On Location Hours	Operating Hours
03-23-2011	9	1						

TOTAL Total is the sum of each column separately

Job

Job Times

Formation Name	Top	Bottom	Called Out	Date	Time	Time Zone
Formation Depth (MD)			On Location	23 - Mar - 2011	04:30	MST
Form Type		BHST	Job Started	23 - Mar - 2011	10:32	MST
Job depth MD	725. ft	Job Depth TVD	725. ft	Job Completed	23 - Mar - 2011	11:24
Water Depth		Wk Ht Above Floor	3. ft	Departed Loc	23 - Mar - 2011	12:45
Perforation Depth (MD)	From	To				

Well Data

Description	New / Used	Max pressure psig	Size in	ID in	Weight lbm/ft	Thread	Grade	Top MD ft	Bottom MD ft	Top TVD ft	Bottom TVD ft
OPEN HOLE				13.5				.	765.		
SURFACE CASING	New		9.625	9.001	32.3		H-40	.	725.		

Sales/Rental/3rd Party (HES)

Description	Qty	Qty uom	Depth	Supplier
PLUG,CMTG, TOP, 9 5/8, HWE, 8.16 MIN/9.06 MA	1	EA		

Tools and Accessories

Type	Size	Qty	Make	Depth	Type	Size	Qty	Make	Depth	Type	Size	Qty	Make
Guide Shoe					Packer					Top Plug	9.625	1	HES
Float Shoe					Bridge Plug					Bottom Plug			
Float Collar				681	Retainer					SSR plug set			
Insert Float										Plug Container	9.625	1	HES
Stage Tool										Centralizers			

Miscellaneous Materials

Gelling Agt	Conc	Surfactant	Conc	Acid Type	Qty	Conc	%
Treatment Fld	Conc	Inhibitor	Conc	Sand Type	Size	Conc	Qty

Fluid Data									
Stage/Plug #: 1									
Fluid #	Stage Type	Fluid Name	Qty	Qty uom	Mixing Density lbm/gal	Yield ft ³ /sk	Mix Fluid Gal/sk	Rate bbl/min	Total Mix Fluid Gal/sk
1	Water Spacer		20.00	bbl	8.4	.0	.0	6.0	
2	Tail Cement	VERSACEM (TM) SYSTEM (452010)	250.0	sacks	12.8	2.11	11.75	6.0	11.75
3	Displacement Fluid		52.6	bbl	8.4	.0	.0	10.0	
Calculated Values		Pressures		Volumes					
Displacement	52.6	Shut In: Instant		Lost Returns	0	Cement Slurry	94	Pad	
Top Of Cement	SURFACE	5 Min		Cement Returns	37	Actual Displacement	52.6	Treatment	
Frac Gradient		15 Min		Spacers	20	Load and Breakdown		Total Job	167
Rates									
Circulating	10	Mixing	6	Displacement	10	Avg. Job	6		
Cement Left In Pipe	Amount	43.5 ft	Reason	Shoe Joint					
Frac Ring # 1 @	ID	Frac ring # 2 @	ID	Frac Ring # 3 @	ID	Frac Ring # 4 @	ID		
The Information Stated Herein Is Correct				Customer Representative Signature					

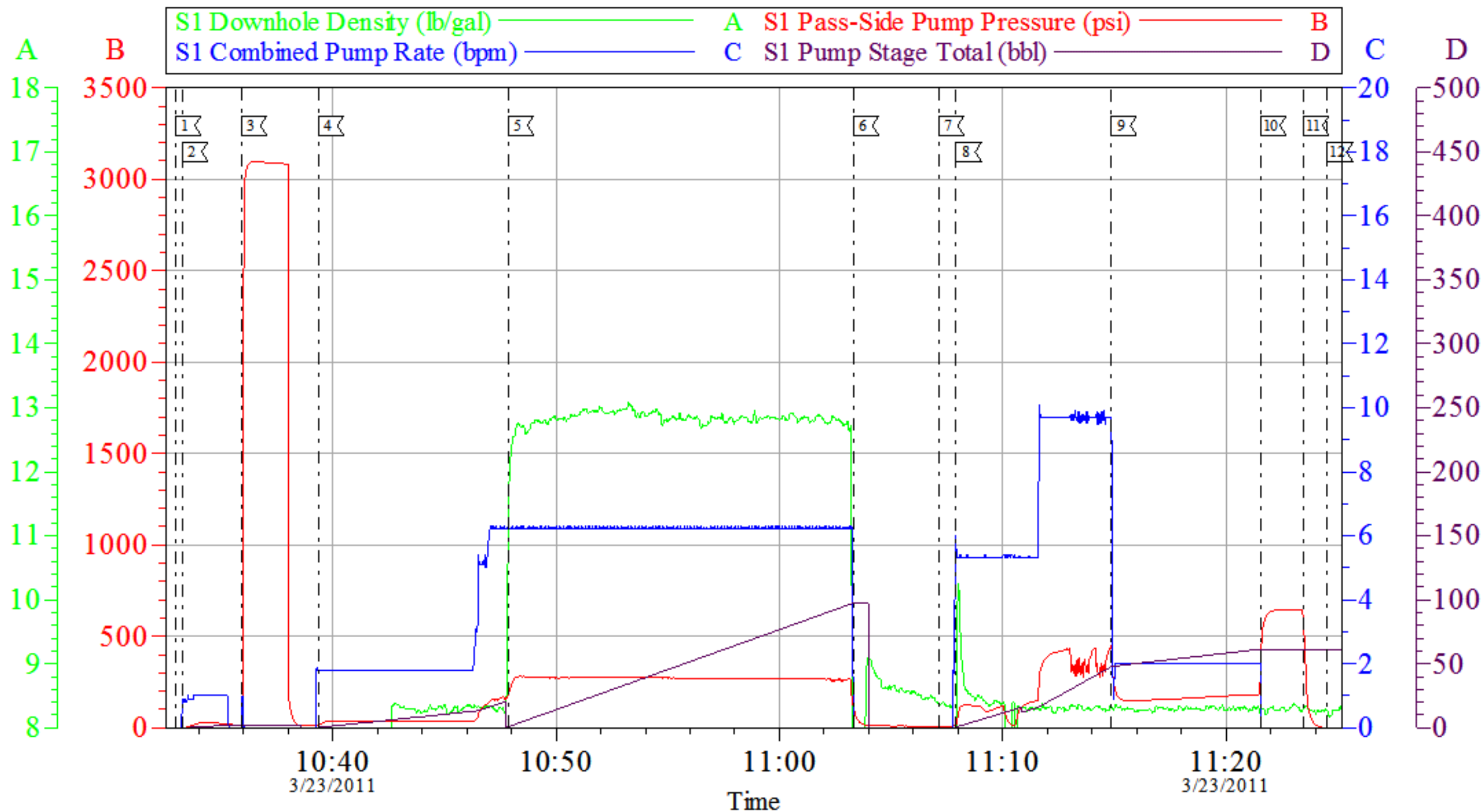
The Road to Excellence Starts with Safety

Sold To #: 300721	Ship To #: 2842262	Quote #:	Sales Order #: 8027249
Customer: WILLIAMS PRODUCTION RMT INC EBUSINE		Customer Rep: GEARY, SCOTT	
Well Name: GM		Well #: 333-27	API/UWI #: 05-045-19741
Field: GRAND VALLEY	City (SAP): PARACHUTE	County/Parish: Garfield	State: Colorado
Legal Description:			
Lat: N 39.491 deg. OR N 39 deg. 29 min. 27.823 secs.		Long: W 108.095 deg. OR W -109 deg. 54 min. 17.68 secs.	
Contractor: H&P 278		Rig/Platform Name/Num: H&P 278	
Job Purpose: Cement Surface Casing			Ticket Amount:
Well Type: Development Well		Job Type: Cement Surface Casing	
Sales Person: KOHL, KYLE		Srvc Supervisor: PHILLIPS, MARK	MBU ID Emp #: 445272

Activity Description	Date/Time	Cht #	Rate bbl/min	Volume bbl		Pressure psig		Comments
				Stage	Total	Tubing	Casing	
Call Out	03/23/2011 01:30							
Pre-Convoy Safety Meeting	03/23/2011 03:00							ALL HES EMPLOYEES
Arrive At Loc	03/23/2011 04:30							RIG STILL P.O.O.H. WITH DP.
Assessment Of Location Safety Meeting	03/23/2011 04:45							ALL HES EMPLOYEES
Rig-Up Equipment	03/23/2011 04:50							1 HT 400 PUMP TRUCK, 1 660 BULK TRUCK, 1 9.625" QUICK LATCH PLUG CONTAINER, 1 F 450 P/U.
Pre-Job Safety Meeting	03/23/2011 09:30							ALL HES EMPLOYEES, RIG CREW, CO REP.
Start Job	03/23/2011 10:32							TD 765', TP 725', FC 681.54', HOLE 13.5", SJ 43.46', MUD WT 8.9 PPG, 600 BBLS OF H2O ON LOCATION, WATER SAMPLE SUBMITTED.
Pump Water	03/23/2011 10:33		1	2			32.0	FILL LINES
Pressure Test	03/23/2011 10:35		0.5				3200.0	NO LEAKS
Pump Spacer 1	03/23/2011 10:39		6	20			35.0	FRESH WATER

Activity Description	Date/Time	Cht #	Rate bbl/min	Volume bbl		Pressure psig		Comments
				Stage	Total	Tubing	Casing	
Pump Tail Cement	03/23/2011 10:47		6	94			250.0	250 SKS VERSACEM CMT MIXED AT 12.8 PPG, 2.11 YIELD, 11.75 GAL/SK, CMT WEIGHED VIA PRESSURE BALANCED MUD SCALES. WET AND DRY SAMPLES SUBMITTED. GOOD RETURNS T/O JOB
Shutdown	03/23/2011 11:03							FOR NO MORE THEN 5 MINUTES,
Drop Plug	03/23/2011 11:07							PLUG LAUNCH
Pump Displacement	03/23/2011 11:07		10	52.6			400.0	FRESH WATER, GOOD RETURNS T/O JOB. PER CO REP OK TO WASH UP ON TOP OF PLUG.
Cement Returns to Surface	03/23/2011 11:13		5	15			250.0	37 BBLS OF CEMENT RETURNED TO SURFACE
Slow Rate	03/23/2011 11:14		2	42.6			200.0	10 BBLS PRIOR TO CALCULATED DISPLACEMENT
Bump Plug	03/23/2011 11:21		2	52.6			600.0	PLUG LANDED HOLD FOR TWO MINUTES
Check Floats	03/23/2011 11:23							FLOATS HOLDING.
End Job	03/23/2011 11:24							THANK YOU FOR USING HES FROM MARK PHILLIPS AND CREW.
Post-Job Safety Meeting (Pre Rig-Down)	03/23/2011 11:28							ALL HES EMPLOYEES
Rig-Down Equipment	03/23/2011 11:30							SAFELY
Pre-Convoy Safety Meeting	03/23/2011 12:30							ALL HES EMPLOYEES
Crew Leave Location	03/23/2011 12:45							SITE WAS AS CLEAN AS WHEN WE ARRIVED

WILLIAMS GM 333-27 SURFACE



Local Event Log			
1 START JOB	10:32:57	2 FILL LINES	10:33:15
3 PRESSURE TEST	10:35:53	4 H2O SPACER	10:39:20
5 TAIL CEMENT	10:47:51	6 SHUT DOWN	11:03:18
7 DROP PLUG	11:07:07	8 START DISPLACEMENT	11:07:54
9 SLOW RATE	11:14:51	10 BUMP PLUG	11:21:33
11 CHECK FLOATS	11:23:27	12 END JOB	11:24:32

Customer: WILLIAMS	Job Date: 23-Mar-2011	Sales Order #: 8027249
Well Description: GM 333-27	Job Type: SURFACE	ADC Used: YES
Company Rep: RICK OAKS	Cement Supervisor: MARK PHILLIPS	Elite #:1 MARK PHILLIPS