

ENCANA OIL & GAS (USA) INC. - EBUS
DO NOT MAIL-3601 N STAGECOACH RD
LONGMONT, Colorado

Vessels Minerals 2-4-19

PATTERSON 34

Post Job Summary

Cement Production Casing

Prepared for:	Kevin Brakovec
Date Prepared:	7/14/09
Version:	1

Service Supervisor: Richard Congdon

Submitted by: Wesley Aaron

HALLIBURTON

HALLIBURTON

Service Supervisor Reports

Job Log

Date/Time	Chart #	Activity Code	Pump Rate	Cum Vol	Pump		Pressure (psig)	Comments
07/04/2009 05:29		Start Job						RIG CIRCULATED WELL 1 HOUR PRIOR TO CEMENTING
07/04/2009 05:32		Test Lines					3272.0	
07/04/2009 05:35		Pump Spacer 1	5	24			281.0	RIG WATER WITH 80# MUDFLUSH III ADDED
07/04/2009 05:41		Pump Spacer 2	5	20			329.0	RIG WATER WITH 2% CLAYFIX
07/04/2009 05:45		Pump Lead Cement	7	122			446.0	350 SACKS HLC MIXED @ 12.5# WITH RIG WATER
07/04/2009 06:06		Pump Tail Cement	7	111			78.0	370 SACKS 50/50 POZ MIXED @ 13.5# WITH RIG WATER
07/04/2009 06:26		Shutdown						
07/04/2009 06:27		Clean Lines						
07/04/2009 06:30		Drop Top Plug						4 1/2 " LATCHDOWN PLUG PRELOADED
07/04/2009 06:32		Pump Displacement	8	132			128.0	RIG WATER WITH 2% CLAYFIX
07/04/2009 06:53		Bump Plug	3				1519.0	CALCULATED PRESSURE TO LAND THE PLUG WAS 1471 PSI
07/04/2009 06:57		Check Floats					2401.0	FLOAT HELD
07/04/2009 07:00		End Job						

The Road to Excellence Starts with Safety

Sold To #: 340078	Ship To #: 2733154	Quote #:	Sales Order #: 6763255
Customer: ENCANA OIL & GAS (USA) INC. - EBUS		Customer Rep: PILCHER, ED	
Well Name: Vessels Minerals		Well #: 2-4-19	API/UWI #: 05-123-30278-00
Field: WATTENBERG	City (SAP): ERIE	County/Parish: Weld	State: Colorado
Legal Description: Section NWSW19 Township 1N Range 68W			
Lat: N 40.034 deg. OR N 40 deg. 2 min. 0.996 secs.		Long: W 105.052 deg. OR W -106 deg. 56 min. 54.096 secs.	
Contractor: PATTERSON		Rig/Platform Name/Num: PATTERSON34	
Job Purpose: Cement Production Casing			
Well Type: Development Well		Job Type: Cement Production Casing	
Sales Person: FLING, MATTHEW		Srvc Supervisor: CONGDON, RICHARD	MBU ID Emp #: 320306

Job Personnel

HES Emp Name	Exp Hrs	Emp #	HES Emp Name	Exp Hrs	Emp #	HES Emp Name	Exp Hrs	Emp #
CONGDON, RICHARD S.		320306	LAVALLEY, LARRY P		419296	RAMOS, REFUGIO Castro		435413
VIGIL, NICHOLAS Joseph		443481						

Equipment

HES Unit #	Distance-1 way	HES Unit #	Distance-1 way	HES Unit #	Distance-1 way	HES Unit #	Distance-1 way
10857080	20 mile	10867419C	20 mile	10948695	20 mile	10972458	20 mile
10982754	20 mile	11341988P	20 mile				

Job Hours

Date	On Location Hours	Operating Hours	Date	On Location Hours	Operating Hours	Date	On Location Hours	Operating Hours
TOTAL	Total is the sum of each column separately							

Job

Job Times

Formation Name					Date	Time	Time Zone
Formation Depth (MD)	Top		Bottom		Called Out	03 - Jul - 2009	23:00 MST
Form Type	BHST				On Location	04 - Jul - 2009	02:00 MST
Job depth MD	8506. ft	Job Depth TVD	8506. ft	Job Started	04 - Jul - 2009	05:29	MST
Water Depth		Wk Ht Above Floor	6. ft	Job Completed	04 - Jul - 2009	07:00	MST
Perforation Depth (MD)	From		To	Departed Loc	04 - Jul - 2009	08:00	MST

Well Data

Description	New / Used	Max pressure psig	Size in	ID in	Weight lbm/ft	Thread	Grade	Top MD ft	Bottom MD ft	Top TVD ft	Bottom TVD ft
7 7/8" Open Hole				7.875				890.	8520.	890.	8520.
4/12" Casing	New		4.5	4.	11.6			.	8506.	.	8506.

Tools and Accessories

Type	Size	Qty	Make	Depth	Type	Size	Qty	Make	Depth	Type	Size	Qty	Make
Guide Shoe					Packer					Top Plug			
Float Shoe					Bridge Plug					Bottom Plug			
Float Collar					Retainer					SSR plug set			
Insert Float										Plug Container			
Stage Tool										Centralizers			

Miscellaneous Materials

Gelling Agt		Conc		Surfactant		Conc		Acid Type		Qty		Conc	%
Treatment Fld		Conc		Inhibitor		Conc		Sand Type		Size		Qty	

Fluid Data									
Stage/Plug #: 1									
Fluid #	Stage Type	Fluid Name	Qty	Qty uom	Mixing Density lbm/gal	Yield ft ³ /sk	Mix Fluid Gal/sk	Rate bbl/min	Total Mix Fluid Gal/sk
1	MUD FLUSH III	MUD FLUSH III - SBM (528788)	1,000.00	Gal	8.4	.0	1000.0	5.0	
2	Lead Cement	ECONOCEM (TM) SYSTEM (452992)	350.0	sacks	12.5	1.95	10.62	7.0	10.62
	10.696 Gal	FRESH WATER							
3	Tail	FRACCEM (TM) SYSTEM (452963)	370.0	sacks	13.5	1.69	8.1	7.0	8.1
	8.162 Gal	FRESH WATER							
4	CLAYFIX 3		132.00	bbl	8.33	.0	.0	8.0	
	2.5 gal/Mgal	CLAYFIX 3, TOTETANK (101583425)							

Calculated Values		Pressures		Volumes			
Displacement		Shut In: Instant		Lost Returns		Cement Slurry	Pad
Top Of Cement		5 Min		Cement Returns		Actual Displacement	Treatment
Frac Gradient		15 Min		Spacers		Load and Breakdown	Total Job

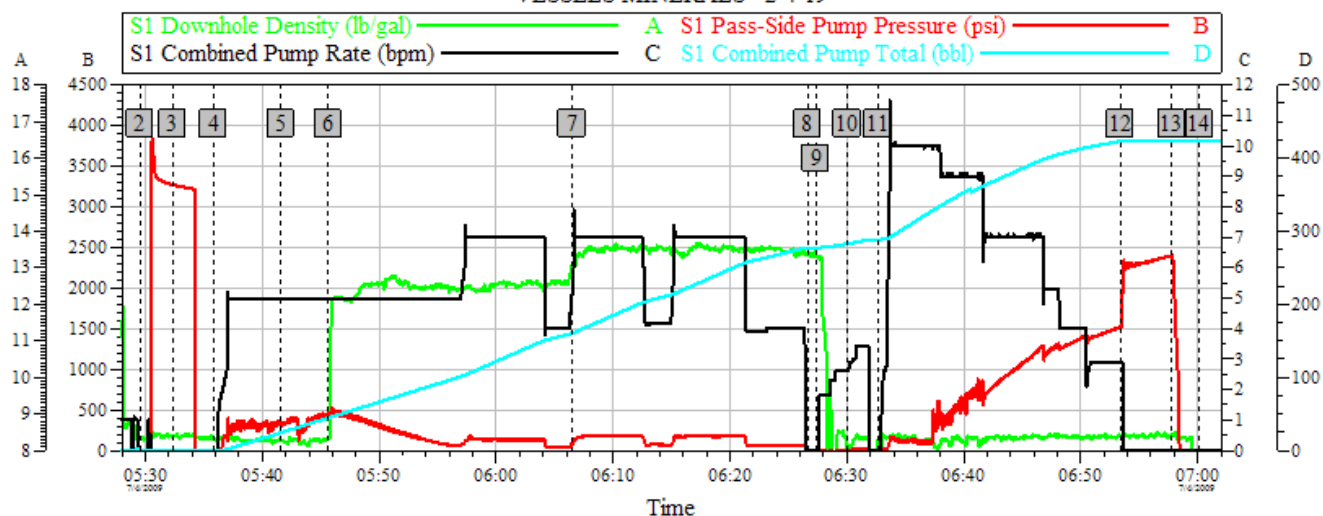
Rates							
Circulating		Mixing		Displacement		Avg. Job	
Cement Left In Pipe	Amount	0 ft	Reason	Shoe Joint			
Frac Ring # 1 @	ID	Frac ring # 2 @	ID	Frac Ring # 3 @	ID	Frac Ring # 4 @	ID

The Information Stated Herein Is Correct	Customer Representative Signature
--	-----------------------------------

HALLIBURTON

ENCANA OIL & GAS (USA)

VESSELS MINERALS 2-4-19



Global Event Log

SCPT SDD SPPP SCPR						SCPT SDD SPPP SCPR							
Intersection			SCPT	SDD	SPPP	SCPR	Intersection			SCPT	SDD	SPPP	SCPR
2	Start Job	05:29:33	0.000	8.340	-2.000	0.000	3	Test Lines	05:32:19	0.200	8.390	3272	0.000
4	Pump Spacer 1	05:35:50	0.200	8.370	2.000	0.000	5	Pump Spacer 2	05:41:34	24.40	8.290	329.0	5.000
6	Pump Lead Cement	05:45:37	44.60	8.350	446.0	5.000	7	Pump Tail Cement	06:06:29	160.4	13.03	78.00	5.100
8	Shutdown	06:26:39	277.4	13.36	-13.00	0.000	9	Clean Lines	06:27:22	277.4	13.29	-16.00	0.000
10	Drop Top Plug	06:30:02	282.8	0.919	-7.000	2.600	11	Pump Displacement	06:32:39	288.7	8.280	-13.00	0.000
12	Bump Plug	06:53:24	423.2	8.400	1519	2.900	13	Check Float	06:57:47	423.8	8.430	2401	0.000
14	End Job	07:00:09	423.8	0.030	-10.000	0.000							

Customer:
Well Description:

Job Date: 04-Jul-2009
UWI:

Sales Order #: 6763255

HALLIBURTON
OptiCem v6.4.2
04-Jul-09 07:07