

ENCANA OIL & GAS (USA) INC. - EBUS
DO NOT MAIL-3601 N STAGECOACH RD
LONGMONT, Colorado

Vessels Minerals 2-4-19

Patterson 34

Post Job Summary

Cement Surface Casing

Prepared for: Kevin Brakovec
Date Prepared: 7/14/09
Version: 1

Service Supervisor: Mike Blake

Submitted by: Tim Gilchrist

HALLIBURTON

Service Supervisor Reports

Job Log

Date/Time	Chart #	Activity Code	Pump Rate	Cum Vol	Pump	Pressure (psig)	Comments
06/30/2009 09:48		Safety Meeting					
06/30/2009 09:48		Safety Huddle					
06/30/2009 13:04		Start Job					
06/30/2009 13:05		Test Lines	0.5			1500.0	
06/30/2009 13:06		Pump Spacer 1	4			125.0	PUMP WATER SPACER
06/30/2009 13:11		Pump Lead Cement	4			150.0	PUMP HALLIBURTON LIGHT CEMENT (325 sks) @ 13.1 #
06/30/2009 13:33		Pump Tail Cement	4			250.0	PUMP STANDARD CEMENT WITH ADDS (20 sks) @ 15.8 #
06/30/2009 13:36		Shutdown					SHUT DOWN DUE TO TRUCK BALLED OFF WITH CEMENT, COULDNT GET TRUCK TO CLEAN UP AND RECIRCULATION LINE TO CLEAN UP CALLED IN TO SERVICE CORDNATOR.
06/30/2009 14:23		Other					RETURN HOLE TO RIG TO CIRCULATE CEMENT TO THE PIT AND CALL FOR MORE CEMENT AND PUMP TRUCK
06/30/2009 17:20		Safety Meeting					RESUMED JOB WITH MORE CEMENT AND PUMP TRUCK
06/30/2009 17:26		Test Lines	0.5			1950.0	
06/30/2009 17:27		Pump Spacer 1	3			95.0	PUMPWATER SPACER WITH DYE
06/30/2009 17:29		Pump Lead Cement	4			145.0	PUMP HALLIBURTON LIGHT CEMENT (325 sks) @ 13.1 #
06/30/2009 17:32		Pump Tail Cement	3			185.0	PUMP STANDARD CEMENT WITH ADDS (130 sks) @ 15.8 #
06/30/2009 18:08		Drop Plug					SHUT DOWN AND DROP PLUG
06/30/2009 18:09		Pump Displacement	4			380.0	PUMP DISPLACEMENT WITH WATER
06/30/2009 18:27		Bump Plug				475.0	BUMP AND SHUT DOWN AND SHUT IN WELL
06/30/2009 18:27		End Job					

The Road to Excellence Starts with Safety

Sold To #: 340078	Ship To #: 2733154	Quote #:	Sales Order #: 6755523
Customer: ENCANA OIL & GAS (USA) INC. - EBUS		Customer Rep: Pilcher, Ed	
Well Name: Vessels Minerals		Well #: 2-4-19	API/UWI #: 05-123-30278
Field: DJ	City (SAP): ERIE	County/Parish: Weld	State: Colorado
Contractor: Patterson		Rig/Platform Name/Num: Patterson 34	
Job Purpose: Cement Surface Casing			
Well Type: Development Well		Job Type: Cement Surface Casing	
Sales Person: FLING, MATTHEW	Srvc Supervisor: BLAKE, MICHAEL		MBU ID Emp #: 305760

Job Personnel

HES Emp Name	Exp Hrs	Emp #	HES Emp Name	Exp Hrs	Emp #	HES Emp Name	Exp Hrs	Emp #
BANUELOS, GUADALUPE		372277	BLAKE, MICHAEL James		305760	MCPHERSON, MATTHEW L		455378
SINCLAIR, RICHARD		368195						

Equipment

HES Unit #	Distance-1 way	HES Unit #	Distance-1 way	HES Unit #	Distance-1 way	HES Unit #	Distance-1 way
10679720C	20 mile	10824253C	20 mile	10972458	20 mile	10982754	20 mile
11142999	20 mile	53063C	20 mile				

Job Hours

Date	On Location Hours	Operating Hours	Date	On Location Hours	Operating Hours	Date	On Location Hours	Operating Hours
TOTAL			Total is the sum of each column separately					

Job**Job Times**

Formation Name								
Formation Depth (MD)	Top	Bottom			Called Out	Date	Time	Time Zone
Form Type		BHST			On Location	30 - Jun - 2009	07:00	MST
Job depth MD	886. ft	Job Depth TVD	886. ft		Job Started	30 - Jun - 2009	09:00	MST
Water Depth		Wk Ht Above Floor	3. ft		Job Completed	30 - Jun - 2009	13:04	MST
Perforation Depth (MD)	From	To			Departed Loc	30 - Jun - 2009	18:27	MST
							19:30	MST

Well Data

Description	New / Used	Max pressure psig	Size in	ID in	Weight lbm/ft	Thread	Grade	Top MD ft	Bottom MD ft	Top TVD ft	Bottom TVD ft
12 1/4" Open Hole				12.25				.	890.	.	890.
8 5/8" Surface Casing	New		8.625	8.097	24.			.	886.	.	886.

Sales/Rental/3rd Party (HES)

Description	Qty	Qty uom	Depth	Supplier
SHOE, GUIDE, 8-5/8 8RD, DOWN-JET, CEMENT	1	EA		
CENTRALIZER ASSY - 8-5/8 CSG X 12-1/4	6	EA		
BASKET - CEMENT - 8 5/8 CSG X 12 1/4	2	EA		
PLUG, CMTG, TOP, WOODN, TWO CUP TY, 8 5/8 IN	1	EA		
BAF, PL, PLSTC, 8 5/8 IN, 8RD SHRTN CPLG 24	1	EA		
KIT, HALL WELD-A	1	EA		

Tools and Accessories													
Type	Size	Qty	Make	Depth	Type	Size	Qty	Make	Depth	Type	Size	Qty	Make
Guide Shoe					Packer					Top Plug			
Float Shoe					Bridge Plug					Bottom Plug			
Float Collar					Retainer					SSR plug set			
Insert Float										Plug Container			
Stage Tool										Centralizers			

Miscellaneous Materials													
Gelling Agt		Conc		Surfactant		Conc		Acid Type		Qty		Conc	%
Treatment Fld		Conc		Inhibitor		Conc		Sand Type		Size		Qty	

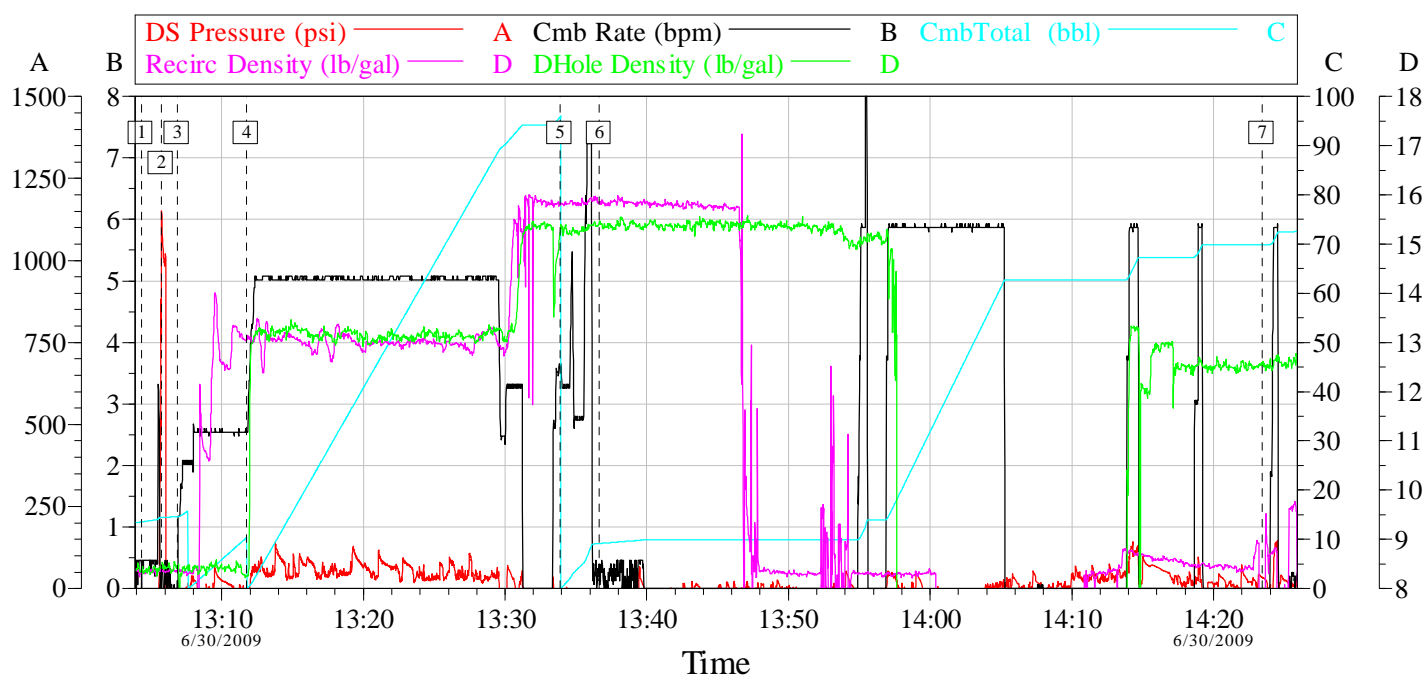
Fluid Data									
Stage/Plug #: 1									
Fluid #	Stage Type	Fluid Name	Qty	Qty uom	Mixing Density lbm/gal	Yield ft ³ /sk	Mix Fluid Gal/sk	Rate bbl/min	Total Mix Fluid Gal/sk
1	Water Ahead		10.00	bbl	8.33	.0	.0	.0	
2	Lead Cement	HALLIBURTON LIGHT STANDARD - SBM (12313)	650.0	sacks	13.1	1.69	8.7	4.0	8.7
3 %		CALCIUM CHLORIDE - HI TEST PELLETT (100005053)							
0.125 lbm		POLY-E-FLAKE (101216940)							
8.638 Gal		FRESH WATER							
3	Tail 15.8#	CMT - STANDARD - TYPE II CEMENT (100064006)	150.0	sacks	15.8	1.15	5.0	4.0	5.0
94 lbm		TYPE I / II CEMENT, BULK (101439798)							
2 %		CALCIUM CHLORIDE - HI TEST PELLETT (100005053)							
0.125 lbm		POLY-E-FLAKE (101216940)							
4.998 Gal		FRESH WATER							
4	Water Displacement		54.00	bbl	8.33	.0	.0	.0	

Calculated Values		Pressures		Volumes			
Displacement		Shut In: Instant		Lost Returns		Cement Slurry	
Top Of Cement		5 Min		Cement Returns		Actual Displacement	
Frac Gradient		15 Min		Spacers		Load and Breakdown	

Rates									
Circulating		Mixing		Displacement		Avg. Job			
Cement Left In Pipe	Amount	38 ft	Reason	Shoe Joint					
Frac Ring # 1 @	ID		Frac ring # 2 @	ID		Frac Ring # 3 @	ID		Frac Ring # 4 @

The Information Stated Herein Is Correct	Customer Representative Signature
--	-----------------------------------

ENCANA VESSEL MINERALS 2-4-19 SURFACE

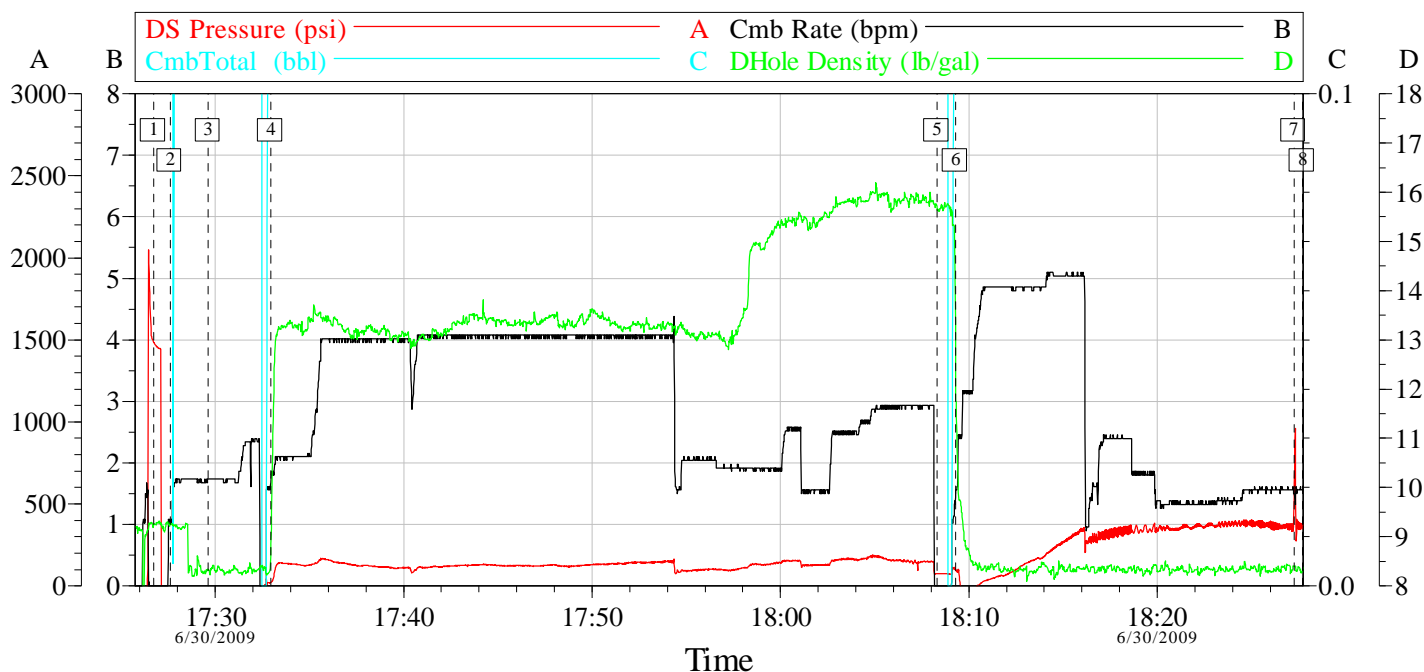


Event Log

Intersection				DP	CR	C	Intersection				DP	CR	C	Intersection				DP	CR	C
1	Start Job	13:04:20	-33.23	0.423	13.51	2	Test Lines	13:05:45	774.5	0.000	14.42	3	Pump Spacer 1	13:06:52	-9.634	0.130	14.53			
4	Pump Lead Cement	13:11:45	-11.56	2.542	10.32	5	Pump Tail Cement	13:33:53	-36.61	3.584	95.83	6	Quit Pumping	13:36:39	-20.73	0.301	9.136			
7	Return To Rig	14:23:25	34.29	0.000	69.89															

Customer: ENCANA	Job Date: 6/30/09	Ticket #: 675523	HALLIBURTON
Well Description: 8 5/8 Surface	UWI:		CemWin v1.7.2 01-Jul-09 00:28

Encana Vessels Minerals 2-4-19 Surface #2



Event Log

Event Log																				
Intersection				DP	CR	C	Intersection				DP	CR	C	Intersection				DP	CR	C
1	Test Lines	17:26:43	1484	0.000	11.52	2	Pump Water	17:27:36	-54.72	1.031	11.62	3	Pump Lead Cmt	17:29:38	-46.41	1.739	3.232			
4	Pump Tail Cmt	17:32:57	18.37	1.679	0.393	5	Shut and Drop	18:08:19	73.46	0.000	113.4	6	Pump Displacement	18:09:18	99.21	1.559	0.245			
7	Bump Plug	18:27:16	475.3	1.499	49.60	8	End Job	18:27:43	369.2	1.559	50.31									

Customer:	Job Date:	Ticket #:
Well Description:	UWI:	

HALLIBURTON
CemWin v1.7.2
01-Jul-09 00:27