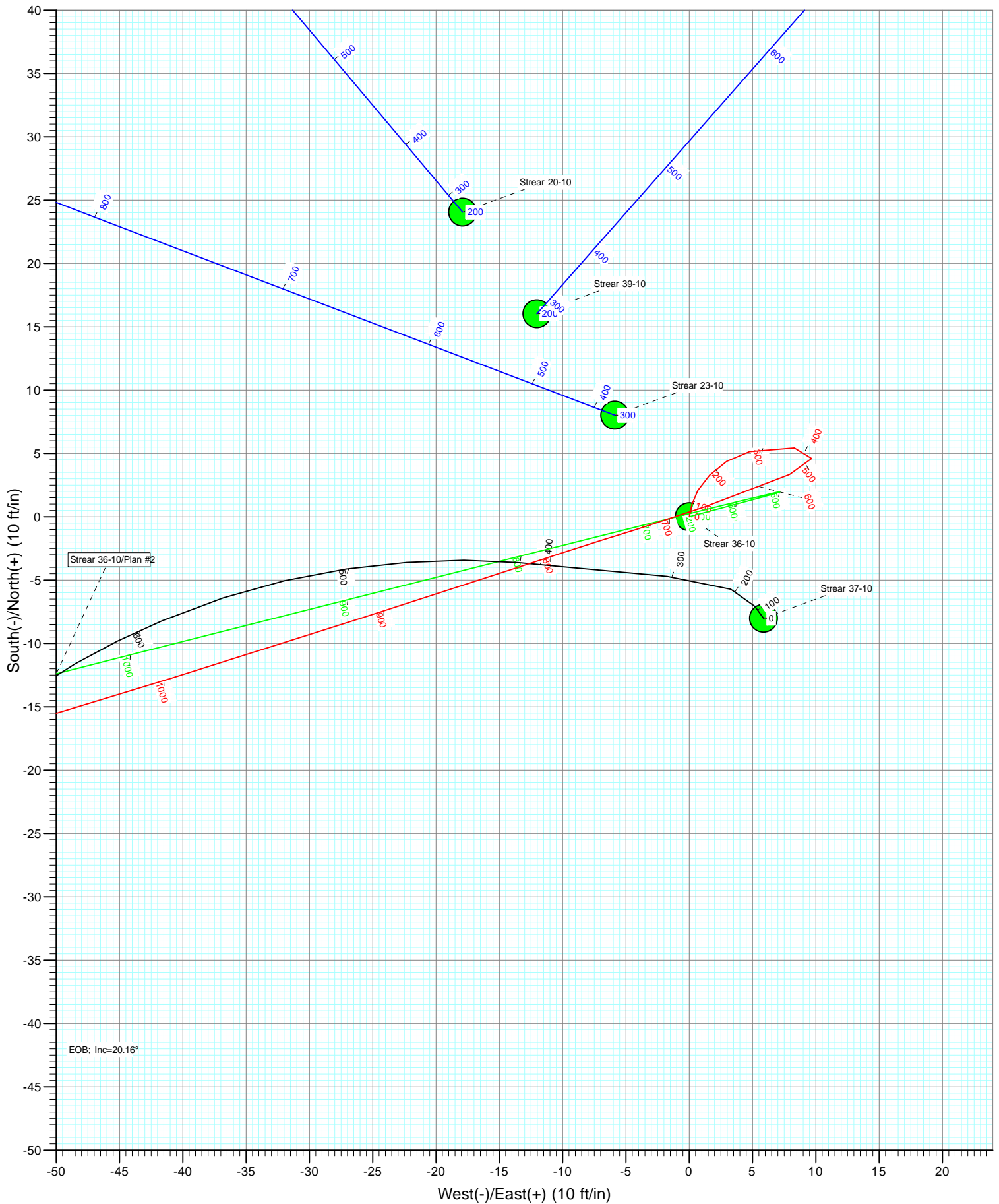
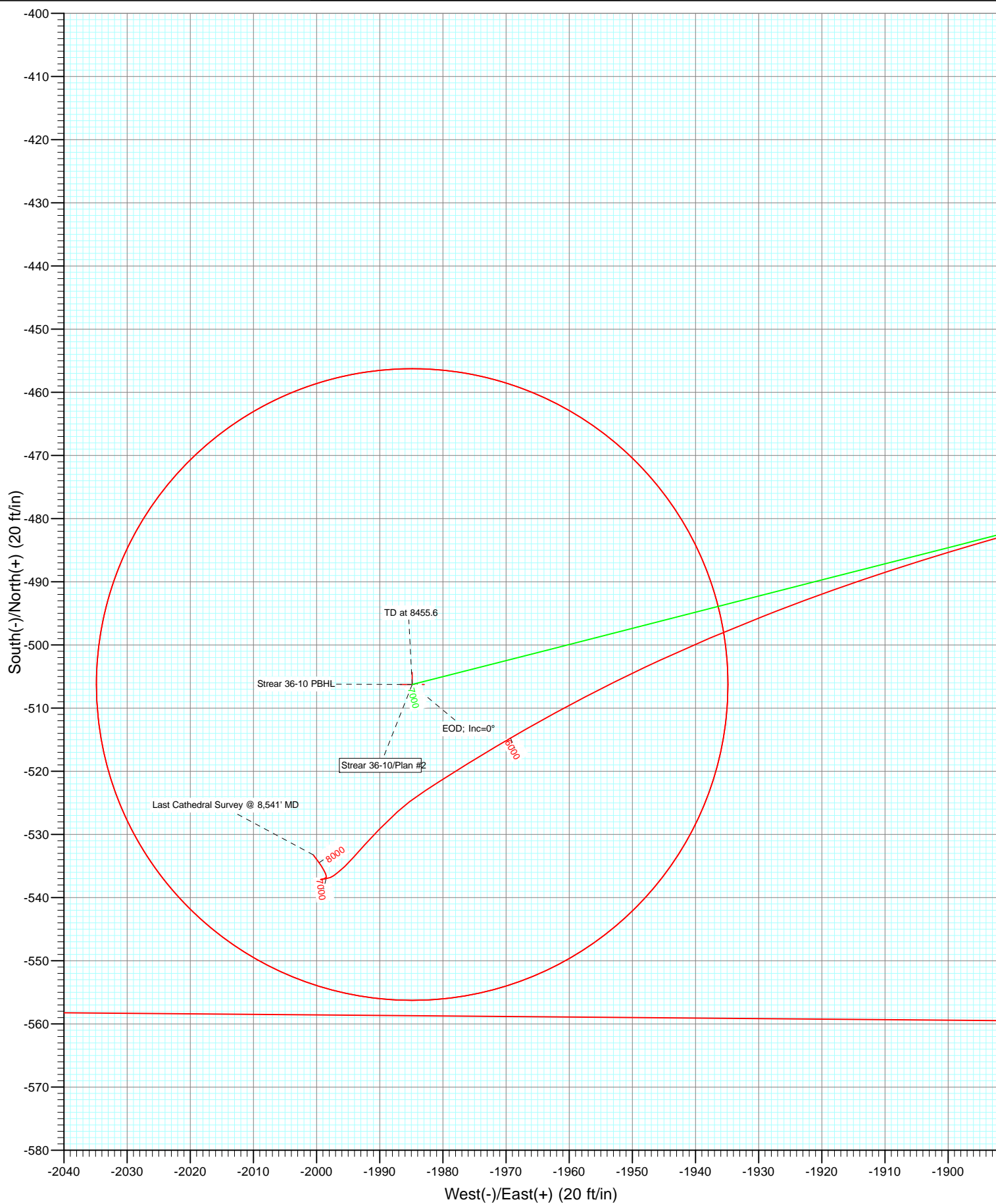


Azimuths to True North
Magnetic North: 8.81°

Magnetic Field
Strength: 52917.4snT
Dip Angle: 66.81°
Date: 2/7/2012
Model: IGRF2010

Type	DD	Azimuth	Origin Type	N/S	E/W	From TVD
User	Strear 36-10	180.00	Slot	0.0	0.0	0.0
Name	Strear 36-10 PBHL	TVD	+N/-S	+E/-W	Latitude	Longitude
		8111.0	-506.3	-1984.8	40.145561	-104.876719





Survey Report

Company:	Anadarko Petroleum Corporation	Local Co-ordinate Reference:	Well Strear 36-10
Project:	DJ Wattenberg	TVD Reference:	KBE @ 4976.0ft (Xtreme 14)
Site:	SESE Sec10-T2N-R67W (Strear 16-10-9F)	MD Reference:	KBE @ 4976.0ft (Xtreme 14)
Well:	Strear 36-10	North Reference:	True
Wellbore:	DD	Survey Calculation Method:	Minimum Curvature
Design:	DD	Database:	USA EDM 5000 Multi Users DB

Project	DJ Wattenberg		
Map System:	US State Plane 1983	System Datum:	Mean Sea Level
Geo Datum:	North American Datum 1983		
Map Zone:	Colorado Northern Zone		

Site		SESE Sec10-T2N-R67W (Strear 16-10-9F)			
Site Position:		Northing:	1,297,030.56 ft	Latitude:	40.147017
From:	Lat/Long	Easting:	3,176,209.76 ft	Longitude:	-104.869683
Position Uncertainty:	0.0 ft	Slot Radius:	13.200 in	Grid Convergence:	0.41 °

Well	Strear 36-10					
Well Position	+N/-S	0.0 ft	Northing:	1,297,006.64 ft	Latitude:	40.146951
	+E/-W	0.0 ft	Easting:	3,176,227.82 ft	Longitude:	-104.869619
Position Uncertainty		0.0 ft	Wellhead Elevation:	ft	Ground Level:	4,961.0 ft

Wellbore	DD				
Magnetics	Model Name	Sample Date	Declination (°)	Dip Angle (°)	Field Strength (nT)
	IGRF2010	2/7/2012	8.81	66.81	52,917

Design	DD				
Audit Notes:					
Version:	1.0	Phase:	ACTUAL	Tie On Depth:	0.0
Vertical Section:	Depth From (TVD)	+N/-S	+E/-W	Direction	
	(ft)	(ft)	(ft)	(°)	
	0.0	0.0	0.0	180.00	

Survey Program	Date	2/11/2012			
From (ft)	To (ft)	Survey (Wellbore)	Tool Name	Description	
89.0	8,541.0	Survey #1 (DD)	MWD	Geolink MWD	

Survey										
Measured Depth (ft)	Inclination (°)	Azimuth (°)	Vertical Depth (ft)	+N/-S (ft)	+E/-W (ft)	Vertical Section (ft)	Dogleg Rate (°/100ft)	Build Rate (°/100ft)	Formations / Comments	
0.0	0.00	0.00	0.0	0.0	0.0	0.0	0.00	0.00		
89.0	1.30	12.90	89.0	1.0	0.2	-1.0	1.46	1.46		
182.0	2.10	42.10	182.0	3.3	1.6	-3.3	1.24	0.86		
275.0	2.60	73.50	274.9	5.1	4.8	-5.1	1.46	0.54		
368.0	1.90	101.30	367.8	5.4	8.3	-5.4	1.37	-0.75		
458.0	0.70	189.10	457.8	4.6	9.7	-4.6	2.22	-1.33		
548.0	2.30	246.80	547.8	3.3	7.9	-3.3	2.24	1.78		
665.0	4.70	250.20	664.5	0.8	1.3	-0.8	2.06	2.05		
733.0	5.10	253.00	732.3	-1.0	-4.2	1.0	0.69	0.59		
824.0	7.30	251.70	822.7	-4.0	-13.6	4.0	2.42	2.42		
913.0	9.20	252.40	910.8	-8.0	-25.8	8.0	2.14	2.13		
1,001.0	11.70	252.40	997.4	-12.8	-41.0	12.8	2.84	2.84		
1,091.0	12.50	253.80	1,085.4	-18.3	-59.0	18.3	0.95	0.89		

Survey Report

Company:	Anadarko Petroleum Corporation	Local Co-ordinate Reference:	Well Strear 36-10
Project:	DJ Wattenberg	TVD Reference:	KBE @ 4976.0ft (Xtreme 14)
Site:	SESE Sec10-T2N-R67W (Strear 16-10-9F)	MD Reference:	KBE @ 4976.0ft (Xtreme 14)
Well:	Strear 36-10	North Reference:	True
Wellbore:	DD	Survey Calculation Method:	Minimum Curvature
Design:	DD	Database:	USA EDM 5000 Multi Users DB

Survey

Measured Depth (ft)	Inclination (°)	Azimuth (°)	Vertical Depth (ft)	+N/-S (ft)	+E/-W (ft)	Vertical Section (ft)	Dogleg Rate (°/100ft)	Build Rate (°/100ft)	Formations / Comments
1,177.0	14.00	257.50	1,169.1	-23.1	-78.1	23.1	2.00	1.74	
1,264.0	15.50	259.90	1,253.2	-27.4	-99.8	27.4	1.86	1.72	
1,353.0	17.10	261.80	1,338.6	-31.4	-124.5	31.4	1.89	1.80	
1,443.0	18.70	260.90	1,424.3	-35.5	-151.8	35.5	1.80	1.78	
1,531.0	20.00	261.40	1,507.3	-40.0	-180.7	40.0	1.49	1.48	
1,621.0	20.30	258.30	1,591.8	-45.5	-211.2	45.5	1.23	0.33	
1,710.0	21.00	256.30	1,675.1	-52.4	-241.8	52.4	1.12	0.79	
1,799.0	21.60	256.60	1,758.0	-60.0	-273.2	60.0	0.69	0.67	
1,889.0	23.40	256.00	1,841.1	-68.1	-306.7	68.1	2.02	2.00	
1,979.0	23.50	252.00	1,923.7	-78.0	-341.1	78.0	1.77	0.11	
2,067.0	24.90	255.30	2,004.0	-88.1	-375.7	88.1	2.21	1.59	
2,157.0	25.10	254.70	2,085.5	-98.0	-412.4	98.0	0.36	0.22	
2,243.0	24.40	254.10	2,163.6	-107.7	-447.1	107.7	0.86	-0.81	
2,331.0	24.60	255.60	2,243.7	-117.2	-482.3	117.2	0.74	0.23	
2,420.0	24.50	253.60	2,324.7	-127.0	-518.0	127.0	0.94	-0.11	
2,509.0	24.00	252.70	2,405.8	-137.6	-552.9	137.6	0.70	-0.56	
2,595.0	23.50	254.30	2,484.5	-147.4	-586.2	147.4	0.95	-0.58	
2,684.0	22.90	253.10	2,566.3	-157.3	-619.8	157.3	0.86	-0.67	
2,774.0	21.40	247.90	2,649.7	-168.5	-651.8	168.5	2.74	-1.67	
2,863.0	21.40	249.60	2,732.6	-180.3	-682.0	180.3	0.70	0.00	
2,951.0	23.40	251.10	2,813.9	-191.6	-713.6	191.6	2.36	2.27	
3,041.0	25.20	253.60	2,896.0	-202.8	-748.9	202.8	2.30	2.00	
3,129.0	26.00	256.80	2,975.3	-212.5	-785.7	212.5	1.81	0.91	
3,218.0	25.90	257.40	3,055.3	-221.2	-823.6	221.2	0.32	-0.11	
3,307.0	24.00	255.70	3,136.0	-229.9	-860.1	229.9	2.28	-2.13	
3,397.0	25.00	259.90	3,217.9	-237.7	-896.6	237.7	2.23	1.11	
3,486.0	24.80	262.60	3,298.7	-243.4	-933.6	243.4	1.30	-0.22	
3,573.0	24.30	261.50	3,377.8	-248.4	-969.4	248.4	0.78	-0.57	
3,662.0	24.10	261.40	3,459.0	-253.9	-1,005.5	253.9	0.23	-0.22	
3,752.0	24.10	265.10	3,541.1	-258.2	-1,042.0	258.2	1.68	0.00	
3,840.0	25.60	261.50	3,621.0	-262.5	-1,078.7	262.5	2.42	1.70	
3,928.0	25.10	258.40	3,700.5	-269.1	-1,115.8	269.1	1.61	-0.57	
4,016.0	24.10	257.50	3,780.5	-276.7	-1,151.6	276.7	1.21	-1.14	
4,104.0	23.50	255.50	3,861.1	-285.0	-1,186.1	285.0	1.14	-0.68	
4,193.0	23.50	250.40	3,942.7	-295.4	-1,220.0	295.4	2.28	0.00	
4,280.0	22.90	249.70	4,022.6	-307.1	-1,252.3	307.1	0.76	-0.69	
4,370.0	25.20	257.90	4,104.9	-317.2	-1,287.4	317.2	4.50	2.56	
4,460.0	24.60	254.00	4,186.5	-326.4	-1,324.2	326.4	1.94	-0.67	
4,547.0	22.80	250.30	4,266.2	-337.0	-1,357.5	337.0	2.68	-2.07	
4,635.0	22.10	251.70	4,347.5	-348.0	-1,389.2	348.0	1.00	-0.80	
4,724.0	23.30	249.90	4,429.6	-359.3	-1,421.6	359.3	1.56	1.35	
4,814.0	25.00	249.30	4,511.7	-372.1	-1,456.2	372.1	1.91	1.89	
4,901.0	25.70	251.90	4,590.3	-384.5	-1,491.3	384.5	1.51	0.80	
4,991.0	25.30	252.20	4,671.6	-396.4	-1,528.1	396.4	0.47	-0.44	
5,080.0	25.30	254.60	4,752.0	-407.3	-1,564.6	407.3	1.15	0.00	
5,168.0	24.10	254.50	4,832.0	-417.1	-1,600.0	417.1	1.36	-1.36	
5,258.0	21.00	258.30	4,915.1	-425.3	-1,633.5	425.3	3.80	-3.44	
5,346.0	21.60	262.10	4,997.1	-430.7	-1,665.0	430.7	1.71	0.68	
5,434.0	24.70	260.60	5,078.0	-435.9	-1,699.2	435.9	3.59	3.52	
5,522.0	24.50	258.40	5,158.0	-442.6	-1,735.2	442.6	1.07	-0.23	
5,611.0	25.20	256.10	5,238.8	-450.9	-1,771.7	450.9	1.34	0.79	
5,699.0	22.00	255.90	5,319.4	-459.4	-1,805.9	459.4	3.64	-3.64	
5,787.0	18.20	254.40	5,402.0	-467.1	-1,835.1	467.1	4.36	-4.32	

Survey Report

Company:	Anadarko Petroleum Corporation	Local Co-ordinate Reference:	Well Strear 36-10
Project:	DJ Wattenberg	TVD Reference:	KBE @ 4976.0ft (Xtreme 14)
Site:	SESE Sec10-T2N-R67W (Strear 16-10-9F)	MD Reference:	KBE @ 4976.0ft (Xtreme 14)
Well:	Strear 36-10	North Reference:	True
Wellbore:	DD	Survey Calculation Method:	Minimum Curvature
Design:	DD	Database:	USA EDM 5000 Multi Users DB

Survey									
Measured Depth (ft)	Inclination (°)	Azimuth (°)	Vertical Depth (ft)	+N/-S (ft)	+E/-W (ft)	Vertical Section (ft)	Dogleg Rate (°/100ft)	Build Rate (°/100ft)	Formations / Comments
5,875.0	18.40	254.30	5,485.6	-474.6	-1,861.7	474.6	0.23	0.23	
5,961.0	18.30	254.50	5,567.2	-481.8	-1,887.8	481.8	0.14	-0.12	
6,048.0	13.80	251.50	5,650.8	-488.8	-1,910.8	488.8	5.26	-5.17	
6,137.0	11.80	248.50	5,737.6	-495.5	-1,929.3	495.5	2.37	-2.25	
6,227.0	10.90	245.10	5,825.8	-502.4	-1,945.6	502.4	1.25	-1.00	
6,313.0	8.70	242.10	5,910.6	-508.9	-1,958.8	508.9	2.63	-2.56	
6,400.0	6.70	239.70	5,996.8	-514.5	-1,969.0	514.5	2.33	-2.30	
6,489.0	5.10	238.10	6,085.3	-519.3	-1,976.8	519.3	1.81	-1.80	
6,577.0	4.20	236.70	6,173.0	-523.1	-1,982.8	523.1	1.03	-1.02	
6,666.0	2.90	227.30	6,261.8	-526.4	-1,987.2	526.4	1.60	-1.46	
6,755.0	2.40	224.00	6,350.7	-529.3	-1,990.1	529.3	0.59	-0.56	
6,844.0	1.90	222.70	6,439.7	-531.7	-1,992.4	531.7	0.56	-0.56	
6,931.0	1.50	221.10	6,526.6	-533.6	-1,994.2	533.6	0.46	-0.46	
7,020.0	1.10	226.30	6,615.6	-535.1	-1,995.5	535.1	0.47	-0.45	
7,110.0	0.70	233.80	6,705.6	-536.0	-1,996.6	536.0	0.46	-0.44	
7,199.0	0.40	232.00	6,794.6	-536.5	-1,997.3	536.5	0.34	-0.34	
7,289.0	0.40	248.70	6,884.6	-536.8	-1,997.8	536.8	0.13	0.00	
7,379.0	0.30	262.60	6,974.6	-537.0	-1,998.4	537.0	0.14	-0.11	
7,468.0	0.30	258.40	7,063.6	-537.1	-1,998.8	537.1	0.02	0.00	
7,558.0	0.10	261.20	7,153.6	-537.1	-1,999.1	537.1	0.22	-0.22	
7,645.0	0.10	263.40	7,240.6	-537.1	-1,999.3	537.1	0.00	0.00	
7,733.0	0.00	49.70	7,328.6	-537.1	-1,999.4	537.1	0.11	-0.11	
7,821.0	0.40	80.10	7,416.6	-537.1	-1,999.1	537.1	0.45	0.45	
7,909.0	0.20	57.70	7,504.6	-537.0	-1,998.6	537.0	0.26	-0.23	
7,998.0	0.10	19.30	7,593.6	-536.8	-1,998.5	536.8	0.15	-0.11	
8,088.0	0.20	348.90	7,683.6	-536.6	-1,998.5	536.6	0.14	0.11	
8,175.0	0.30	341.30	7,770.6	-536.2	-1,998.6	536.2	0.12	0.11	
8,264.0	0.40	329.40	7,859.6	-535.7	-1,998.8	535.7	0.14	0.11	
8,354.0	0.70	328.90	7,949.6	-535.0	-1,999.2	535.0	0.33	0.33	
8,442.0	0.70	320.80	8,037.6	-534.1	-1,999.9	534.1	0.11	0.00	
8,491.0	0.60	324.30	8,086.6	-533.7	-2,000.2	533.7	0.22	-0.20	Strear 36-10 PBHL
8,541.0	0.60	324.30	8,136.6	-533.2	-2,000.5	533.2	0.00	0.00	Last Cathedral Survey @ 8,541' MD

Targets									
Target Name	Dip Angle (°)	Dip Dir. (°)	TVD (ft)	+N/-S (ft)	+E/-W (ft)	Northing (ft)	Easting (ft)	Latitude	Longitude
Strear 36-10 PBHL	0.00	0.00	8,111.0	-506.3	-1,984.8	1,296,486.28	3,174,246.62	40.145561	-104.876719
- hit/miss target									
- Shape									
- actual wellpath misses target center by 39.8ft at 8491.0ft MD (8086.6 TVD, -533.7 N, -2000.2 E)									
- Circle (radius 50.0)									

Design Annotations				
Measured Depth (ft)	Vertical Depth (ft)	Local Coordinates		Comment
		+N/-S (ft)	+E/-W (ft)	
8,541.0	8,136.6	-533.2	-2,000.5	Last Cathedral Survey @ 8,541' MD

Checked By: _____	Approved By: _____	Date: _____
-------------------	--------------------	-------------