

Bill Barrett Corp. (II)

Garfield County, Colorado [NAD83]

Werner Pad

Werner 34B-23-692

Wellbore #1

Design: Wellbore #1

Standard Survey Report

12 January, 2012



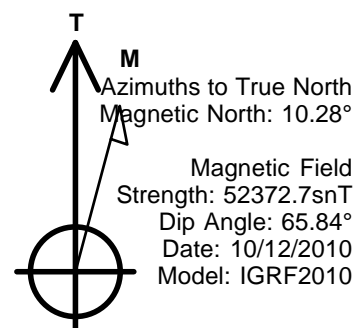
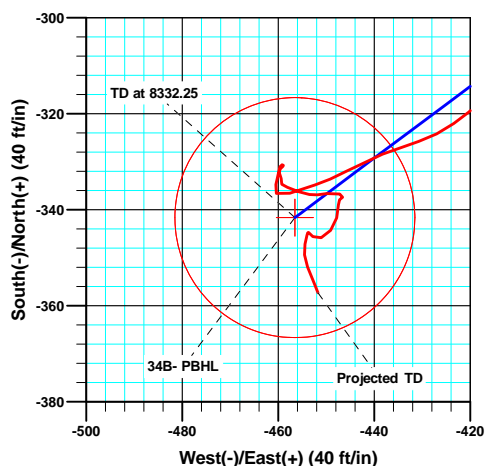
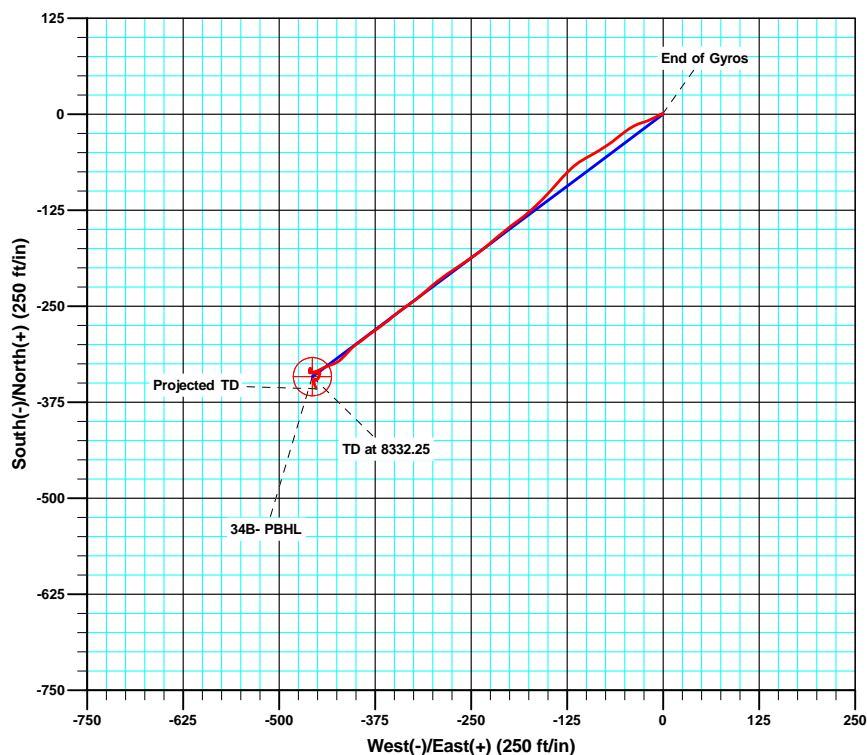
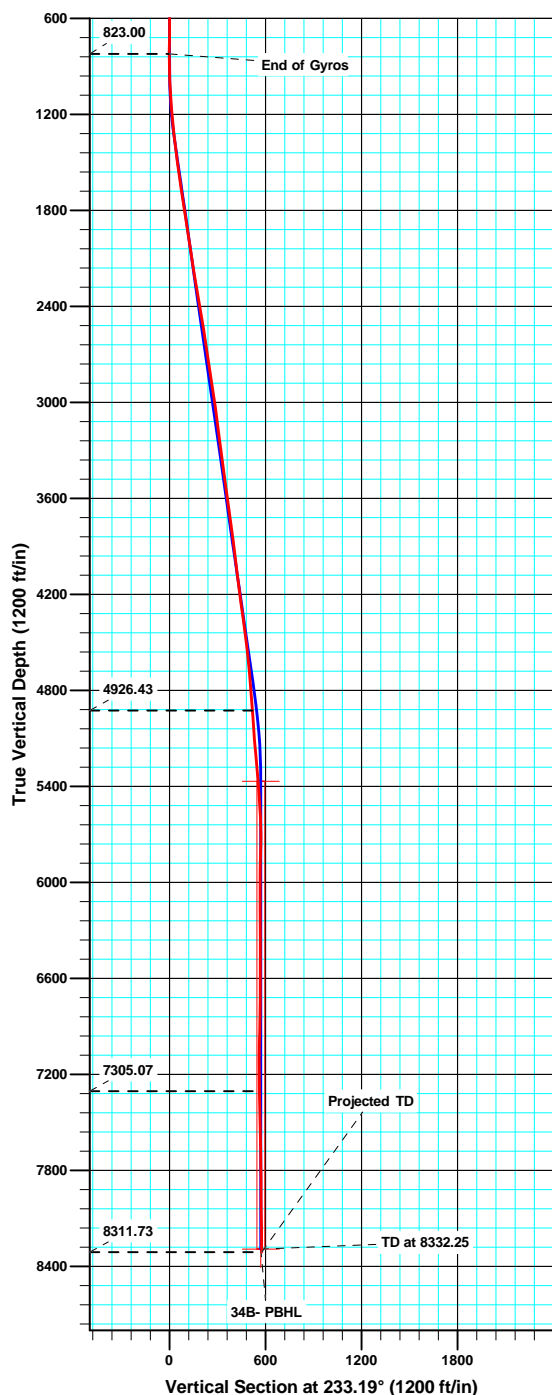


WELL DETAILS: Werner 34B-23-692

US State Plane 1983 North American Datum 1983 Colorado Central Zone

+N/-S +E/-W Northing Easting Latitude Longitude
0.00 0.00 1616833.00 2398995.81 39° 30' 27.50 N 107° 37' 48.91 W

Ground Level: 5943.00 KB: 23'



ANNOTATIONS

TVD	MD	Inc	Azi	+N/-S	+E/-W	VSect	Departure	Annotation
823.00	823.00	0.150	189.37	0.41	-0.62	0.25	2.20	End of Gyros
4926.43	4962.00	4.200	228.10	-312.53	-412.76	517.73	523.51	As of Jan 9
7305.07	7343.00	1.500	182.30	-338.93	-447.46	561.33	608.15	As of Jan 10
8311.73	8350.00	2.500	158.40	-357.27	-451.74	575.73	633.40	Projected TD

Company:	Bill Barrett Corp. (II)	Local Co-ordinate Reference:	Well Werner 34B-23-692
Project:	Garfield County, Colorado [NAD83]	TVD Reference:	KB @ 5966.00ft (KB=23')
Site:	Werner Pad	MD Reference:	KB @ 5966.00ft (KB=23')
Well:	Werner 34B-23-692	North Reference:	True
Wellbore:	Wellbore #1	Survey Calculation Method:	Minimum Curvature
Design:	Wellbore #1	Database:	CompassVM

Project	Garfield County, Colorado [NAD83]		
Map System:	US State Plane 1983	System Datum:	Mean Sea Level
Geo Datum:	North American Datum 1983		
Map Zone:	Colorado Central Zone		

Site	Werner Pad				
Site Position:		Northing:	1,616,752.90 usft	Latitude:	39° 30' 26.71 N
From:	Lat/Long	Easting:	2,398,994.50 usft	Longitude:	107° 37' 48.91 W
Position Uncertainty:	0.00 ft	Slot Radius:	1.10 ft	Grid Convergence:	-1.34 °

Well	Werner 34B-23-692					
Well Position	+N/-S	0.00 ft	Northing:	1,616,832.99 usft	Latitude:	39° 30' 27.50 N
	+E/-W	0.00 ft	Easting:	2,398,995.81 usft	Longitude:	107° 37' 48.91 W
Position Uncertainty		0.00 ft	Wellhead Elevation:	ft	Ground Level:	5,943.00 ft

Wellbore	Wellbore #1				
Magnetics	Model Name	Sample Date	Declination (°)	Dip Angle (°)	Field Strength (nT)
	IGRF2010	10/12/10	10.28	65.84	52,373

Design	Wellbore #1				
Audit Notes:					
Version:	1.0	Phase:	ACTUAL	Tie On Depth:	0.00
Vertical Section:	Depth From (TVD) (ft)	+N/-S (ft)	+E/-W (ft)	Direction (°)	
	0.00	0.00	0.00	233.19	

Survey Program	Date	01/12/12			
From (ft)	To (ft)	Survey (Wellbore)	Tool Name	Description	
73.00	823.00	Gyro Surveys (Wellbore #1)	MWD	MWD - Standard	
970.00	8,350.00	MWD (Wellbore #1)	MWD	MWD - Standard	

Survey										
Measured Depth (ft)	Inclination (°)	Azimuth (°)	Vertical Depth (ft)	+N/-S (ft)	+E/-W (ft)	Vertical Section (ft)	Dogleg Rate (°/100ft)	Build Rate (°/100ft)	Turn Rate (°/100ft)	
0.00	0.000	0.00	0.00	0.00	0.00	0.00	0.00	0.00	0.00	
73.00	0.310	311.96	73.00	0.13	-0.15	0.04	0.42	0.42	0.00	
123.00	0.190	9.12	123.00	0.30	-0.23	0.01	0.52	-0.24	114.32	
173.00	0.340	262.92	173.00	0.37	-0.37	0.07	0.87	0.30	-212.40	
223.00	0.310	310.24	223.00	0.44	-0.62	0.23	0.52	-0.06	94.64	
273.00	0.050	341.55	273.00	0.55	-0.73	0.26	0.54	-0.52	62.62	
323.00	0.190	134.46	323.00	0.51	-0.68	0.24	0.47	0.28	305.82	
373.00	0.200	274.75	373.00	0.46	-0.70	0.29	0.73	0.02	280.58	
423.00	0.070	130.83	423.00	0.44	-0.77	0.35	0.52	-0.26	-287.84	
473.00	0.160	270.62	473.00	0.42	-0.82	0.40	0.44	0.18	279.58	

Company:	Bill Barrett Corp. (II)	Local Co-ordinate Reference:	Well Werner 34B-23-692
Project:	Garfield County, Colorado [NAD83]	TVD Reference:	KB @ 5966.00ft (KB=23')
Site:	Werner Pad	MD Reference:	KB @ 5966.00ft (KB=23')
Well:	Werner 34B-23-692	North Reference:	True
Wellbore:	Wellbore #1	Survey Calculation Method:	Minimum Curvature
Design:	Wellbore #1	Database:	CompassVM

Survey									
Measured Depth (ft)	Inclination (°)	Azimuth (°)	Vertical Depth (ft)	+N/-S (ft)	+E/-W (ft)	Vertical Section (ft)	Dogleg Rate (°/100ft)	Build Rate (°/100ft)	Turn Rate (°/100ft)
523.00	0.080	57.97	523.00	0.44	-0.86	0.42	0.46	-0.16	294.70
573.00	0.010	107.49	573.00	0.46	-0.82	0.38	0.15	-0.14	99.04
623.00	0.110	139.37	623.00	0.42	-0.79	0.38	0.20	0.20	63.76
673.00	0.100	340.58	673.00	0.43	-0.77	0.36	0.41	-0.02	-317.58
723.00	0.080	152.54	723.00	0.44	-0.77	0.35	0.36	-0.04	343.92
773.00	0.180	66.39	773.00	0.44	-0.68	0.28	0.38	0.20	-172.30
823.00	0.150	189.37	823.00	0.41	-0.62	0.25	0.58	-0.06	245.96
970.00	1.100	268.40	969.99	0.18	-2.06	1.54	0.74	0.65	53.76
1,062.00	2.700	239.10	1,061.94	-0.96	-4.80	4.42	1.98	1.74	-31.85
1,155.00	5.100	242.00	1,154.71	-4.03	-10.33	10.69	2.59	2.58	3.12
1,250.00	6.000	248.00	1,249.27	-7.87	-18.66	19.66	1.13	0.95	6.32
1,345.00	6.900	253.00	1,343.67	-11.40	-28.73	29.83	1.12	0.95	5.26
1,440.00	8.200	240.30	1,437.85	-16.42	-40.07	41.92	2.22	1.37	-13.37
1,536.00	7.900	232.30	1,532.90	-23.85	-51.24	55.31	1.21	-0.31	-8.33
1,631.00	8.200	229.90	1,626.97	-32.21	-61.58	68.60	0.47	0.32	-2.53
1,726.00	7.500	238.60	1,721.08	-39.80	-72.06	81.54	1.45	-0.74	9.16
1,821.00	8.100	236.20	1,815.20	-46.75	-82.91	94.40	0.72	0.63	-2.53
1,916.00	8.700	242.70	1,909.18	-53.77	-94.86	108.17	1.18	0.63	6.84
2,012.00	9.500	236.70	2,003.98	-61.45	-107.93	123.24	1.29	0.83	-6.25
2,107.00	9.100	225.90	2,097.74	-70.99	-119.88	138.51	1.88	-0.42	-11.37
2,202.00	9.100	222.80	2,191.54	-81.73	-130.38	153.35	0.52	0.00	-3.26
2,297.00	9.700	222.60	2,285.27	-93.13	-140.90	168.61	0.63	0.63	-0.21
2,392.00	10.100	221.40	2,378.85	-105.27	-151.83	184.63	0.47	0.42	-1.26
2,487.00	9.800	228.30	2,472.42	-116.90	-163.37	200.84	1.29	-0.32	7.26
2,582.00	9.100	226.90	2,566.14	-127.41	-174.90	216.36	0.78	-0.74	-1.47
2,677.00	8.300	234.60	2,660.04	-136.51	-185.97	230.69	1.49	-0.84	8.11
2,772.00	8.300	232.50	2,754.05	-144.66	-197.00	244.40	0.32	0.00	-2.21
2,868.00	8.900	230.50	2,848.97	-153.60	-208.23	258.75	0.70	0.63	-2.08
2,963.00	8.600	229.50	2,942.86	-162.89	-219.30	273.17	0.35	-0.32	-1.05
3,058.00	7.300	228.90	3,036.95	-171.47	-229.25	286.28	1.37	-1.37	-0.63
3,153.00	7.500	235.20	3,131.16	-178.98	-238.89	298.50	0.88	0.21	6.63
3,248.00	7.500	233.50	3,225.35	-186.20	-248.96	310.89	0.23	0.00	-1.79
3,343.00	7.600	236.30	3,319.52	-193.38	-259.17	323.37	0.40	0.11	2.95
3,438.00	7.400	237.30	3,413.71	-200.17	-269.55	335.74	0.25	-0.21	1.05
3,533.00	8.000	234.10	3,507.85	-207.35	-280.05	348.45	0.78	0.63	-3.37
3,628.00	7.900	233.90	3,601.94	-215.07	-290.68	361.59	0.11	-0.11	-0.21
3,723.00	8.300	229.20	3,695.99	-223.40	-301.15	374.96	0.81	0.42	-4.95
3,818.00	7.600	228.60	3,790.08	-232.03	-311.05	388.06	0.74	-0.74	-0.63
3,913.00	6.700	230.20	3,884.34	-239.74	-320.02	399.86	0.97	-0.95	1.68
4,008.00	7.100	236.40	3,978.65	-246.53	-329.17	411.26	0.89	0.42	6.53
4,104.00	7.000	235.70	4,073.93	-253.11	-338.94	423.02	0.14	-0.10	-0.73
4,199.00	7.300	227.70	4,168.19	-260.44	-348.19	434.81	1.09	0.32	-8.42
4,294.00	7.600	232.60	4,262.39	-268.31	-357.64	447.10	0.74	0.32	5.16

Company:	Bill Barrett Corp. (II)	Local Co-ordinate Reference:	Well Werner 34B-23-692
Project:	Garfield County, Colorado [NAD83]	TVD Reference:	KB @ 5966.00ft (KB=23')
Site:	Werner Pad	MD Reference:	KB @ 5966.00ft (KB=23')
Well:	Werner 34B-23-692	North Reference:	True
Wellbore:	Wellbore #1	Survey Calculation Method:	Minimum Curvature
Design:	Wellbore #1	Database:	CompassVM

Survey									
Measured Depth (ft)	Inclination (°)	Azimuth (°)	Vertical Depth (ft)	+N/-S (ft)	+E/-W (ft)	Vertical Section (ft)	Dogleg Rate (°/100ft)	Build Rate (°/100ft)	Turn Rate (°/100ft)
4,390.00	8.200	232.90	4,357.48	-276.30	-368.15	460.30	0.63	0.63	0.31
4,485.00	6.900	235.90	4,451.65	-283.59	-378.28	472.77	1.43	-1.37	3.16
4,580.00	6.800	230.60	4,545.98	-290.36	-387.35	484.09	0.67	-0.11	-5.58
4,676.00	5.800	234.60	4,641.40	-296.77	-395.70	494.62	1.14	-1.04	4.17
4,771.00	4.900	232.00	4,735.98	-302.05	-402.81	503.47	0.98	-0.95	-2.74
4,866.00	4.200	216.30	4,830.69	-307.35	-408.06	510.86	1.50	-0.74	-16.53
4,962.00	4.200	228.10	4,926.43	-312.53	-412.76	517.73	0.90	0.00	12.29
5,057.00	4.000	224.10	5,021.19	-317.24	-417.66	524.46	0.37	-0.21	-4.21
5,152.00	5.100	235.00	5,115.89	-322.04	-423.42	531.96	1.47	1.16	11.47
5,247.00	4.900	251.70	5,210.53	-325.73	-430.73	540.02	1.54	-0.21	17.58
5,343.00	4.700	249.00	5,306.19	-328.43	-438.30	547.70	0.31	-0.21	-2.81
5,438.00	5.100	241.40	5,400.85	-331.85	-445.64	555.62	0.80	0.42	-8.00
5,533.00	3.800	252.10	5,495.56	-334.84	-452.34	562.78	1.62	-1.37	11.26
5,629.00	2.800	251.60	5,591.40	-336.55	-457.59	568.01	1.04	-1.04	-0.52
5,724.00	1.100	320.00	5,686.35	-336.59	-460.38	570.27	2.74	-1.79	72.00
5,819.00	1.500	22.40	5,781.33	-334.74	-460.49	569.25	1.46	0.42	65.68
5,915.00	1.300	2.10	5,877.30	-332.49	-459.97	567.48	0.55	-0.21	-21.15
6,010.00	0.600	37.00	5,972.29	-331.02	-459.64	566.33	0.92	-0.74	36.74
6,106.00	0.200	88.00	6,068.29	-330.61	-459.17	565.71	0.52	-0.42	53.13
6,201.00	0.200	153.50	6,163.29	-330.75	-458.93	565.60	0.23	0.00	68.95
6,296.00	1.100	233.60	6,258.28	-331.44	-459.59	566.54	1.14	0.95	84.32
6,392.00	0.700	114.50	6,354.27	-332.23	-459.79	567.18	1.63	-0.42	-124.06
6,487.00	1.200	186.90	6,449.26	-333.46	-459.39	567.59	1.26	0.53	76.21
6,582.00	0.400	131.40	6,544.26	-334.67	-459.26	568.21	1.08	-0.84	-58.42
6,677.00	1.200	113.50	6,639.25	-335.28	-458.10	567.65	0.87	0.84	-18.84
6,772.00	1.800	111.60	6,734.21	-336.23	-455.80	566.38	0.63	0.63	-2.00
6,867.00	1.100	92.50	6,829.18	-336.82	-453.50	564.89	0.89	-0.74	-20.11
6,962.00	0.900	90.30	6,924.17	-336.86	-451.84	563.59	0.21	-0.21	-2.32
7,057.00	1.500	79.00	7,019.15	-336.63	-449.87	561.88	0.68	0.63	-11.89
7,153.00	1.800	102.50	7,115.11	-336.71	-447.17	559.76	0.76	0.31	24.48
7,248.00	1.100	249.00	7,210.09	-337.36	-446.56	559.67	2.93	-0.74	154.21
7,343.00	1.500	182.30	7,305.07	-338.93	-447.46	561.33	1.55	0.42	-70.21
7,439.00	1.800	191.40	7,401.03	-341.67	-447.81	563.24	0.41	0.31	9.48
7,534.00	1.800	221.40	7,495.99	-344.25	-449.09	565.82	0.98	0.00	31.58
7,629.00	1.300	246.00	7,590.96	-345.81	-451.07	568.33	0.86	-0.53	25.89
7,724.00	1.200	312.40	7,685.94	-345.57	-452.78	569.57	1.44	-0.11	69.89
7,820.00	0.300	315.30	7,781.93	-344.72	-453.70	569.79	0.94	-0.94	3.02
7,915.00	1.000	190.40	7,876.92	-345.36	-454.03	570.43	1.26	0.74	-131.47
8,010.00	1.200	194.10	7,971.91	-347.14	-454.42	571.81	0.22	0.21	3.89
8,106.00	1.500	175.10	8,067.88	-349.36	-454.56	573.26	0.56	0.31	-19.79
8,201.00	1.700	157.00	8,162.84	-351.90	-453.90	574.25	0.57	0.21	-19.05
8,303.00	2.500	158.40	8,264.77	-355.36	-452.49	575.19	0.79	0.78	1.37
8,350.00	2.500	158.40	8,311.73	-357.27	-451.74	575.73	0.00	0.00	0.00

Company:	Bill Barrett Corp. (II)	Local Co-ordinate Reference:	Well Werner 34B-23-692
Project:	Garfield County, Colorado [NAD83]	TVD Reference:	KB @ 5966.00ft (KB=23')
Site:	Werner Pad	MD Reference:	KB @ 5966.00ft (KB=23')
Well:	Werner 34B-23-692	North Reference:	True
Wellbore:	Wellbore #1	Survey Calculation Method:	Minimum Curvature
Design:	Wellbore #1	Database:	CompassVM

Survey									
Measured Depth (ft)	Inclination (°)	Azimuth (°)	Vertical Depth (ft)	+N/-S (ft)	+E/-W (ft)	Vertical Section (ft)	Dogleg Rate (°/100ft)	Build Rate (°/100ft)	Turn Rate (°/100ft)

Design Annotations				
Measured Depth (ft)	Vertical Depth (ft)	Local Coordinates		Comment
		+N/-S (ft)	+E/-W (ft)	
823.00	823.00	0.41	-0.62	End of Gyros
4,962.00	4,926.43	-312.53	-412.76	As of Jan 9
7,343.00	7,305.07	-338.93	-447.46	As of Jan 10
8,350.00	8,311.73	-357.27	-451.74	Projected TD

Checked By: _____ Approved By: _____ Date: _____