
BILL BARRETT CORPORATION E-BILL

**DIXON FED 22C-23-692
MAMM CREEK
Garfield County , Colorado**

Cement Surface Casing
02-Apr-2012

Post Job Summary

The Road to Excellence Starts with Safety

Sold To #: 343492	Ship To #: 343492	Quote #:	Sales Order #: 9405500
Customer: BILL BARRETT CORPORATION E-BILL	Customer Rep: Lauer, Casey		
Well Name: DIXON FED	Well #: 22C-23-692	API/UWI #: 05-045-21123	
Field: MAMM CREEK	City (SAP): DENVER	County/Parish: Garfield	State: Colorado
Lat: N 39.515 deg. OR N 39 deg. 30 min. 52.517 secs.	Long: W 107.635 deg. OR W -108 deg. 21 min. 54.184 secs.		
Contractor: ProPetro Services Inc.	Rig/Platform Name/Num: ProPetro		
Job Purpose: Cement Surface Casing			
Well Type: Development Well	Job Type: Cement Surface Casing		
Sales Person: METLI, MARSHALL	Srv Supervisor: TRIPLETT, MICHEAL	MBU ID Emp #: 447908	

Job Personnel

HES Emp Name	Exp Hrs	Emp #	HES Emp Name	Exp Hrs	Emp #	HES Emp Name	Exp Hrs	Emp #
HARDRICK, RAYMOND Frank	0.0	391324	TRIPLETT, MICHEAL Anthony	0.0	447908	WEAVER, CARLTON Russell	0.0	457698

Equipment

HES Unit #	Distance-1 way	HES Unit #	Distance-1 way	HES Unit #	Distance-1 way	HES Unit #	Distance-1 way
10867423	120 mile	10897887	120 mile	10951245	120 mile	11542767	120 mile
11808835	120 mile						

Job Hours

Date	On Location Hours	Operating Hours	Date	On Location Hours	Operating Hours	Date	On Location Hours	Operating Hours

TOTAL Total is the sum of each column separately

Job

Formation Name					Date				Time		Time Zone				
Formation Depth (MD)		Top		Bottom		Called Out				02 - Apr - 2012		09:30		MST	
Form Type		BHST		On Location				02 - Apr - 2012		13:00		MST			
Job depth MD		800. ft		Job Depth TVD		800. ft		Job Started		02 - Apr - 2012		15:56		MST	
Water Depth		Wk Ht Above Floor		3. ft		Job Completed		02 - Apr - 2012		16:55		MST			
Perforation Depth (MD)		From		To		Departed Loc				02 - Apr - 2012		17:00		MST	

Well Data

Description	New / Used	Max pressure psig	Size in	ID in	Weight lbm/ft	Thread	Grade	Top MD ft	Bottom MD ft	Top TVD ft	Bottom TVD ft
-------------	------------	-------------------	---------	-------	---------------	--------	-------	-----------	--------------	------------	---------------

Sales/Rental/3rd Party (HES)

Description	Qty	Qty uom	Depth	Supplier
PLUG,CMTG,TOP,9 5/8,HWE,8.16 MIN/9.06 MA	1	EA		

Tools and Accessories

Type	Size	Qty	Make	Depth	Type	Size	Qty	Make	Depth	Type	Size	Qty	Make
Guide Shoe					Packer					Top Plug			
Float Shoe					Bridge Plug					Bottom Plug			
Float Collar					Retainer					SSR plug set			
Insert Float										Plug Container			
Stage Tool										Centralizers			

Miscellaneous Materials

Gelling Agt	Conc	Surfactant	Conc	Acid Type	Qty	Conc	%
Treatment Fld	Conc	Inhibitor	Conc	Sand Type	Size	Qty	

Fluid Data

Fluid Data									
Stage/Plug #: 1									
Fluid #	Stage Type	Fluid Name	Qty	Qty uom	Mixing Density lbm/gal	Yield ft3/sk	Mix Fluid Gal/sk	Rate bbl/min	Total Mix Fluid Gal/sk

Stage/Plug #: 1

Stage/Plug #: 1									
Fluid #	Stage Type	Fluid Name	Qty	Qty uom	Mixing Density lbm/gal	Yield ft ³ /sk	Mix Fluid Gal/sk	Rate bbl/min	Total Mix Fluid Gal/sk
1	Water Spacer		20.00	bbl	8.34	.0	.0	7.0	
2	Lead Cement	VERSACEM (TM) SYSTEM (452010)	120.0	sacks	12.3	2.38	13.77	7.0	13.77
		13.77 Gal	FRESH WATER						
3	Tail Cement	SWIFTCEM (TM) SYSTEM (452990)	120.0	sacks	14.2	1.43	6.85	7.0	6.85
		6.85 Gal	FRESH WATER						
4	Displacement		56.00	bbl	9.			7.0	
Calculated Values		Pressures		Volumes					
Displacement		Shut In: Instant		Lost Returns		Cement Slurry		Pad	
Top Of Cement		5 Min		Cement Returns		Actual Displacement		Treatment	
Frac Gradient		15 Min		Spacers		Load and Breakdown		Total Job	
Rates									
Circulating		Mixing		Displacement		Avg. Job			
Cement Left In Pipe	Amount	0 ft	Reason	Shoe Joint					
Frac Ring # 1 @	ID	Frac ring # 2 @	ID	Frac Ring # 3 @	ID	Frac Ring # 4 @	ID		
The Information Stated Herein Is Correct				Customer Representative Signature					

The Road to Excellence Starts with Safety

Sold To #: 343492	Ship To #: 343492	Quote #:	Sales Order #: 9405500
Customer: BILL BARRETT CORPORATION E-BILL		Customer Rep: Lauer, Casey	
Well Name: DIXON FED		Well #: 22C-23-692	API/UWI #: 05-045-21123
Field: MAMM CREEK	City (SAP): DENVER	County/Parish: Garfield	State: Colorado
Legal Description:			
Lat: N 39.515 deg. OR N 39 deg. 30 min. 52.517 secs.		Long: W 107.635 deg. OR W -108 deg. 21 min. 54.184 secs.	
Contractor: ProPetro Services Inc.		Rig/Platform Name/Num: ProPetro	
Job Purpose: Cement Surface Casing			Ticket Amount:
Well Type: Development Well		Job Type: Cement Surface Casing	
Sales Person: METLI, MARSHALL		Srv Supervisor: TRIPLETT, MICHEAL	MBU ID Emp #: 447908

Activity Description	Date/Time	Cht #	Rate bbl/ min	Volume bbl		Pressure psig		Comments
				Stage	Total	Tubing	Casing	
Arrive At Loc	04/02/2012 13:00							CEMENT ARRIVED ON LOCATION, REST OF CREW ON LOCATION FROM PREVIOUS JOB.
Assessment Of Location Safety Meeting	04/02/2012 13:05							REVIEWED EMERGENCY PLAN, ASSESSED WORK AREA AND SPOTTED EQUIPMENT.
Pre-Rig Up Safety Meeting	04/02/2012 13:15							ENTIRE CREW, WALKED THROUGH RIG UP LOOKING FOR HAZARDS.
Rig-Up Equipment	04/02/2012 13:20							1 PICK UP, 1 HT400 PUMP TRUCK, 1 660 BULK CEMENT TRUCK, 1 SWAGE WITH PLUG
Pre-Job Safety Meeting	04/02/2012 15:45							ENTIRE CREW AND RIG CREW.
Start Job	04/02/2012 15:56							TD 800 TP 779.56' SJ 44.85 FC 734.71', 9 5/8 36# CASING IN 12 1/2" HOLE. AIR DRILLED HOLE.
Pump Water	04/02/2012 15:57		2	2			30.0	FILL LINES BEFORE TESTING
Pressure Test	04/02/2012 15:58						3000.0	HELD PRESSURE FOR 2 MIN, PRESSURE HELD, NO LEAKS.
Activity Description	Date/Time	Cht #	Rate bbl/ min	Volume bbl		Pressure psig		Comments
				Stage	Total	Tubing	Casing	

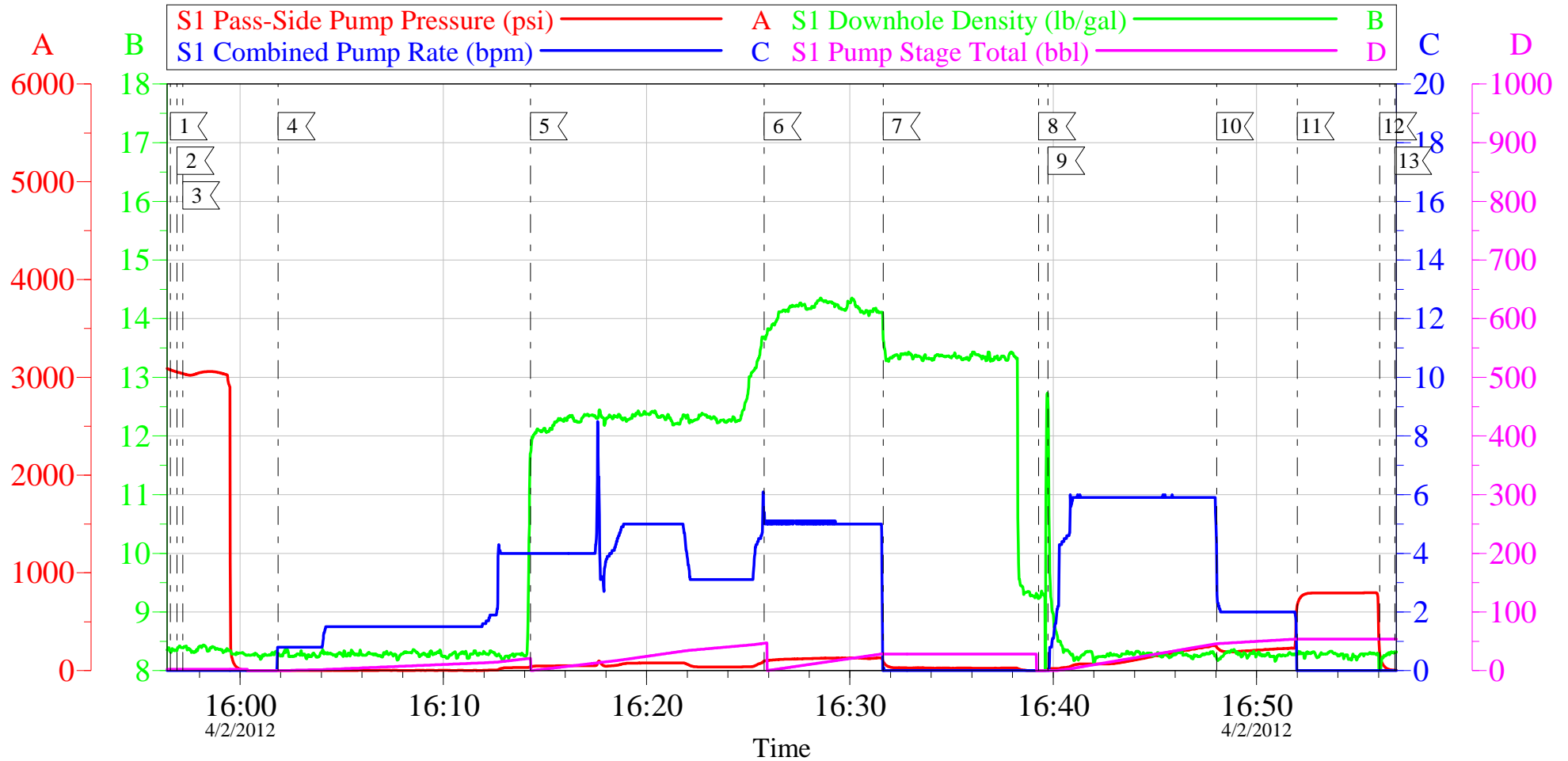
Pump Spacer 1	04/02/2012 16:01		4	20			50.0	FRESH WATER, PUMPED AT 2 BPM UNTIL CEMENT TUB UP TO WEIGHT AND WEIGHED WITH SCALES, SPED RATE TO 5 BPM AT 6 BBLs GONE.
Pump Lead Cement	04/02/2012 16:14		6	50.9			80.0	120 SKS VERSACEM, 12.3 PPG, 2.38 CUFT/SK, 13.77 GAL/SK.
Pump Tail Cement	04/02/2012 16:25		6	30.6			120.0	120 SKS VERSACEM, 14.2 PPG, 1.43 CUFT/SK, 6.85 GAL/SK.
Shutdown	04/02/2012 16:31							
Drop Top Plug	04/02/2012 16:38							VARIIFIED PLUG LEFT CONTAINER, USED 9 5/8" SWAGE.
Pump Displacement	04/02/2012 16:39		6	56.8			220.0	FRESH WATER, CEMENT TO SURFACE AT 33 BBLs GONE, 22 BBLs OF CEMENT TO SURFACE. DID NOT USE ANY SUGAR.
Slow Rate	04/02/2012 16:48		2	46.8			200.0	SLOWED RATE TO 2 BPM TO BUMP PLUG.
Bump Plug	04/02/2012 16:53						240.0	PLUG LANDED AT 240 PSI, BUMPED UP TO 797 PSI AND HELD FOR 2 MIN.
Check Floats	04/02/2012 16:55							FLOATS HELD, WHEN RELEASED PRESSURE GOT 3/4 BBL OF WATER BACK TO TRUCK, CLOSED TWO INCH ON CASING AND LEFT ON TIL NEXT SURFACE.
End Job	04/02/2012 16:56							RETURNS TO SURFACE AT 24 BBLs GONE ON TAIL CEMENT GOOD RETURNS REMAINDER, DID NOT RECIPROCATATE PIPE. NO ADDITIONAL HOURS, NO SUGAR USED.
Post-Job Safety Meeting (Pre Rig-Down)	04/02/2012 16:57							ENTIRE CREW

Cementing Job Log

Activity Description	Date/Time	Cht #	Rate bbl/ min	Volume bbl		Pressure psig		Comments
				Stage	Total	Tubing	Casing	
Other	04/02/2012 17:00							CREW WILL STAY ON LOCATION FOR NEXT JOB.

BILL BARRETT - DIXON FED 23C-22-692

9 5/8" SURFACE



Local Event Log

1 START JOB	15:56:34	2 FILL LINES	15:56:54	3 PRESSURE TEST	15:57:11
4 START H2O SPACER	16:01:53	5 START LEAD CEMENT	16:14:17	6 START TAIL CEMENT	16:25:47
7 SHUTDOWN	16:31:38	8 DROP PLUG	16:39:17	9 START DISPLACEMENT	16:39:44
10 SLOWRATE	16:48:02	11 BUMP PLUG	16:52:00	12 CHECK FLOATS	16:56:03
13 END JOB	16:56:48				

Customer: BILL BARRETT
Well Description: DIXON FED 23C-22-692
Company Rep: C. LAUER

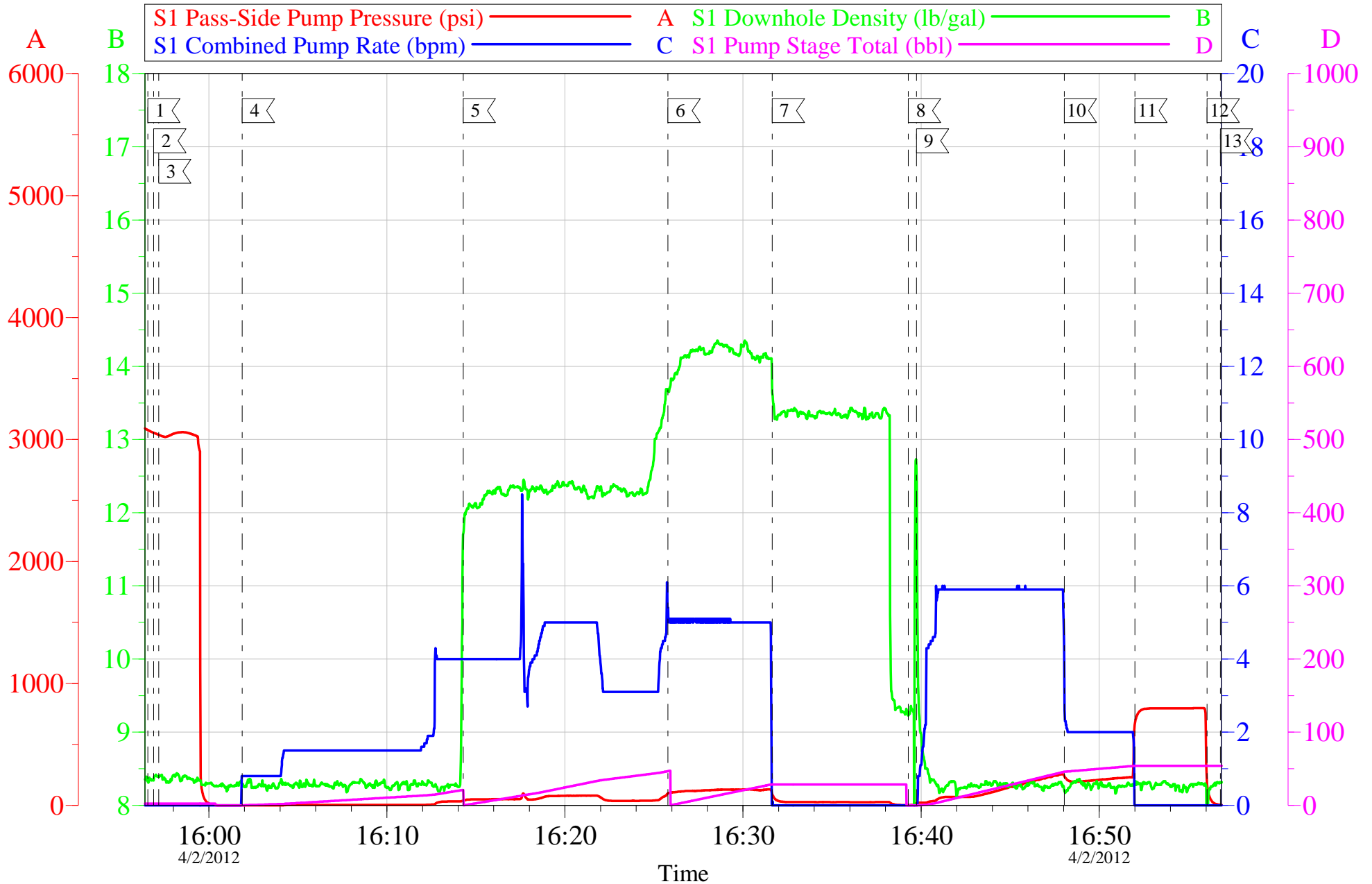
Job Date: 02-Apr-2012
Job Type: SURFACE
Cement Supervisor: MIKE TRIPLETT

Sales Order #: 9405500
ADC Used: YES
Elite #1: RAY HARDRICK

OptiCem v6.4.9
02-Apr-12 17:02

BILL BARRETT - DIXON FED 23C-22-692

9 5/8" SURFACE



Customer: BILL BARRETT
Well Description: DIXON FED 23C-22-692
Company Rep: C. LAUER

Job Date: 02-Apr-2012
Job Type: SURFACE
Cement Supervisor: MIKE TRIPLETT

Sales Order #: 9405500
ADC Used: YES
Elite #1: RAY HARDRICK

OptiCem v6.4.9
02-Apr-12 17:02

Sales Order #: 9405500	Line Item: 10	Survey Conducted Date: 4/2/2012
Customer: BILL BARRETT CORPORATION E-BILL		Job Type (BOM): CMT SURFACE CASING BOM
Customer Representative:		API / UWI: (leave blank if unknown) 05-045-21123
Well Name: DIXON FED		Well Number: 22C-23-692
Well Type: Development Well	Well Country: United States of America	
H2S Present: No	Well State: Colorado	Well County: Garfield

Dear Customer,

We hope that you were satisfied with the service quality of this job performed by Halliburton. It is the aim of our management and service personnel to deliver equipment and service of a standard unmatched in the service sector of the energy industry.

Please take the time to let us know if our performance met with your satisfaction. Please be as critical as possible to ensure we constantly improve our service. Your comments are of great value to us and are intended for the exclusive use of Halliburton.

CUSTOMER SATISFACTION SURVEY

CATEGORY	CUSTOMER SATISFACTION RESPONSE	
Survey Conducted Date	The date the survey was conducted	4/2/2012
Survey Interviewer	The survey interviewer is the person who initiated the survey.	MICHEAL TRIPLETT (HB15721)
Customer Participation	Did the customer participate in this survey? (Y/N)	No
Customer Representative	Enter the Customer representative name	
HSE	Was our HSE performance satisfactory? Circle Y or N	
Equipment	Were you satisfied with our Equipment? Circle Y or N	
Personnel	Were you satisfied with our people? Circle Y or N	
Customer Comment	Customer's Comment	

CUSTOMER SIGNATURE

Sales Order #: 9405500	Line Item: 10	Survey Conducted Date: 4/2/2012
Customer: BILL BARRETT CORPORATION E-BILL		Job Type (BOM): CMT SURFACE CASING BOM
Customer Representative:		API / UWI: (leave blank if unknown) 05-045-21123
Well Name: DIXON FED		Well Number: 22C-23-692
Well Type: Development Well	Well Country: United States of America	
H2S Present: No	Well State: Colorado	Well County: Garfield

KEY PERFORMANCE INDICATORS

General	
Survey Conducted Date	4/2/2012
The date the survey was conducted	

Cementing KPI Survey	
Type of Job	0
Select the type of job. (Cementing or Non-Cementing)	
Select the Maximum Deviation range for this Job	Vertical
What is the highest deviation for the job you just completed? This may not be the maximum well deviation.	
Total Operating Time (hours)	1
Total Operating Hours Including Rig-up, Pumping, Rig-down. Enter in decimal format.	
HSE Incident, Accident, Injury	No
HSE Incident, Accident, Injury. This should be recordable incidents only.	
Was the job purpose achieved?	Yes
Was the job delivered correctly as per customer agreed design?	
Operating Hours (Pumping Hours)	1
Total number of hours pumping fluid on this job. Enter in decimal format.	
Customer Non-Productive Rig Time (hrs)	0
Lost time due to Halliburton in the start, execution, or completion of an ordered service or product, or delays in a follow-on service. Enter in decimal format. 0 if none.	
Type of Rig Classification Job Was Performed	Drilling Rig (Portable)
Type Of Rig (classification) Job Was Performed On	
Number Of JSAs Performed	7
Number Of Jsas Performed	
Number of Unplanned Shutdowns	0
Unplanned shutdown is when injection stops for any period of time.	
Was this a Primary Cement Job (Yes / No)	Yes

Sales Order #: 9405500	Line Item: 10	Survey Conducted Date: 4/2/2012
Customer: BILL BARRETT CORPORATION E-BILL		Job Type (BOM): CMT SURFACE CASING BOM
Customer Representative:		API / UWI: (leave blank if unknown) 05-045-21123
Well Name: DIXON FED		Well Number: 22C-23-692
Well Type: Development Well	Well Country: United States of America	
H2S Present: No	Well State: Colorado	Well County: Garfield

Primary Cement Job= Casing job, Liner job, or Tie-back job.	
Did We Run Wiper Plugs? Did We Run Top And Bottom Casing Wiper Plugs?	Top
Mixing Density of Job Stayed in Designed Density Range (0-100%) Density Range defined as +/- .20 ppg. Calculation: Total BBLs cement mixed at designed density divided by total BBLs of cement multiplied by 100	95
Was Automated Density Control Used? Was Automated Density Control (ADC) Used ?	Yes
Pump Rate (percent) of Job Stayed At Designed Pump Rate Pump Rate range defined as +/- 1bbl/min. Calculation: Total BBLs of fluid pumped at the designed rate divided by Total BBLs of fluid pumped, multiplied by 100	95
Nbr of Remedial Sqz Jobs Rqd - Competition Number Of Remedial Squeeze Jobs Required After Primary Job Performed By Competition	0
Nbr of Remedial Plug Jobs Rqd - HES Number Of Remedial Plug Jobs Needed After Primary Plug Pumped By HES	0
Nbr of Remedial Sqz Jobs Rqd - HES Number Of Remedial Squeeze Jobs Required After Primary Job Performed By HES	0