
WILLIAMS PRODUCTION RMT INC EBUSINE

**KP 344-18
KOKOPELLI
Garfield County , Colorado**

Cement Surface Casing
24-Sep-2010

Post Job Report

The Road to Excellence Starts with Safety

Sold To #: 300721		Ship To #: 2806304		Quote #:		Sales Order #: 7628304	
Customer: WILLIAMS PRODUCTION RMT INC EBUSINE				Customer Rep: Duniho, Al			
Well Name: KP		Well #: 344-18		API/UWI #: 05-045-19477			
Field: KOKOPELLI		City (SAP): SILT		County/Parish: Garfield		State: Colorado	
Lat: N 39.522 deg. OR N 39 deg. 31 min. 20.042 secs.				Long: W 107.595 deg. OR W -108 deg. 24 min. 19.166 secs.			
Contractor: CYCLONE 30		Rig/Platform Name/Num: CYCLONE 30					
Job Purpose: Cement Surface Casing							
Well Type: Development Well				Job Type: Cement Surface Casing			
Sales Person: KOHL, KYLE				Srvc Supervisor: REEVES, BRANDON		MBU ID Emp #: 287883	
Job Personnel							
HES Emp Name	Exp Hrs	Emp #	HES Emp Name	Exp Hrs	Emp #	HES Emp Name	Exp Hrs
BRUN, JUSTIN M	5	459269	DOUT, JACOB J	5	430298	REEVES, BRANDON W	287883
Equipment							
HES Unit #	Distance-1 way	HES Unit #	Distance-1 way	HES Unit #	Distance-1 way	HES Unit #	Distance-1 way
10567589C	60 mile	10867322	60 mile	10897891	60 mile	10995027	60 mile
Job Hours							
Date	On Location Hours	Operating Hours	Date	On Location Hours	Operating Hours	Date	On Location Hours
09/24/2010	5	2					
TOTAL		<i>Total is the sum of each column separately</i>					
Job				Job Times			
Formation Name				Date		Time	
Formation Depth (MD)		Top	Bottom	Called Out		Time Zone	
Form Type		BHST		On Location		Time	
Job depth MD		1162.1 ft		Job Started		Time	
Water Depth		Wk Ht Above Floor		Job Completed		Time	
Perforation Depth (MD)		From	To	Departed Loc			
Well Data							
Description	New / Used	Max pressure psig	Size in	ID in	Weight lbm/ft	Thread	Grade
							Top MD ft
							Bottom MD ft
							Top TVD ft
							Bottom TVD ft
Sales/Rental/3rd Party (HES)							
Description				Qty	Qty uom	Depth	Supplier
PLUG,CMTG,TOP,9 5/8,HWE,8.16 MIN/9.06 MA				1	EA		
PORT. DAS W/CEMWIN;ACQUIRE W/HES, ZI				1	JOB		
R/A DENSOMETER W/CHART RECORDER,/JOB,ZI				1	JOB		
ADC (AUTO DENSITY CTRL) SYS, /JOB,ZI				1	JOB		
Tools and Accessories							
Type	Size	Qty	Make	Depth	Type	Size	Qty
Guide Shoe					Packer		
Float Shoe					Bridge Plug		
Float Collar					Retainer		
Insert Float							
Stage Tool							
Miscellaneous Materials							
Gelling Agt		Conc		Surfactant		Conc	
Treatment Fld		Conc		Inhibitor		Conc	
						Acid Type	
						Sand Type	
						Qty	
						Size	
						Conc	
						Qty	
						%	

Fluid Data									
Stage/Plug #: 1									
Fluid #	Stage Type	Fluid Name	Qty	Qty uom	Mixing Density lbm/gal	Yield ft ³ /sk	Mix Fluid Gal/sk	Rate bbl/min	Total Mix Fluid Gal/sk
1	Water Spacer	FRESH WATER SPACER	20.00	bbl	8.4	.0	.0	.0	
2	Lead Cement	VERSACEM (TM) SYSTEM (452010)	180.0	sacks	12.3	2.38	13.75		
3	Tail Cement	VERSACEM (TM) SYSTEM (452010)	160.0	sacks	12.8	2.11	11.75		
4	Displacement Fluid	FRESH WATER DISPALCEMENT	87.00	bbl	8.4	.0	.0	.0	
Calculated Values		Pressures		Volumes					
Displacement		Shut In: Instant		Lost Returns		Cement Slurry		Pad	
Top Of Cement		5 Min		Cement Returns		Actual Displacement		Treatment	
Frac Gradient		15 Min		Spacers		Load and Breakdown		Total Job	
Rates									
Circulating		Mixing		8		Displacement		10	
Avg. Job								9	
Cement Left In Pipe		Amount		44.90 ft		Reason		Shoe Joint	
Frac Ring # 1 @		ID		Frac ring # 2 @		ID		Frac Ring # 3 @	
								ID	
The Information Stated Herein Is Correct				Customer Representative Signature					

The Road to Excellence Starts with Safety

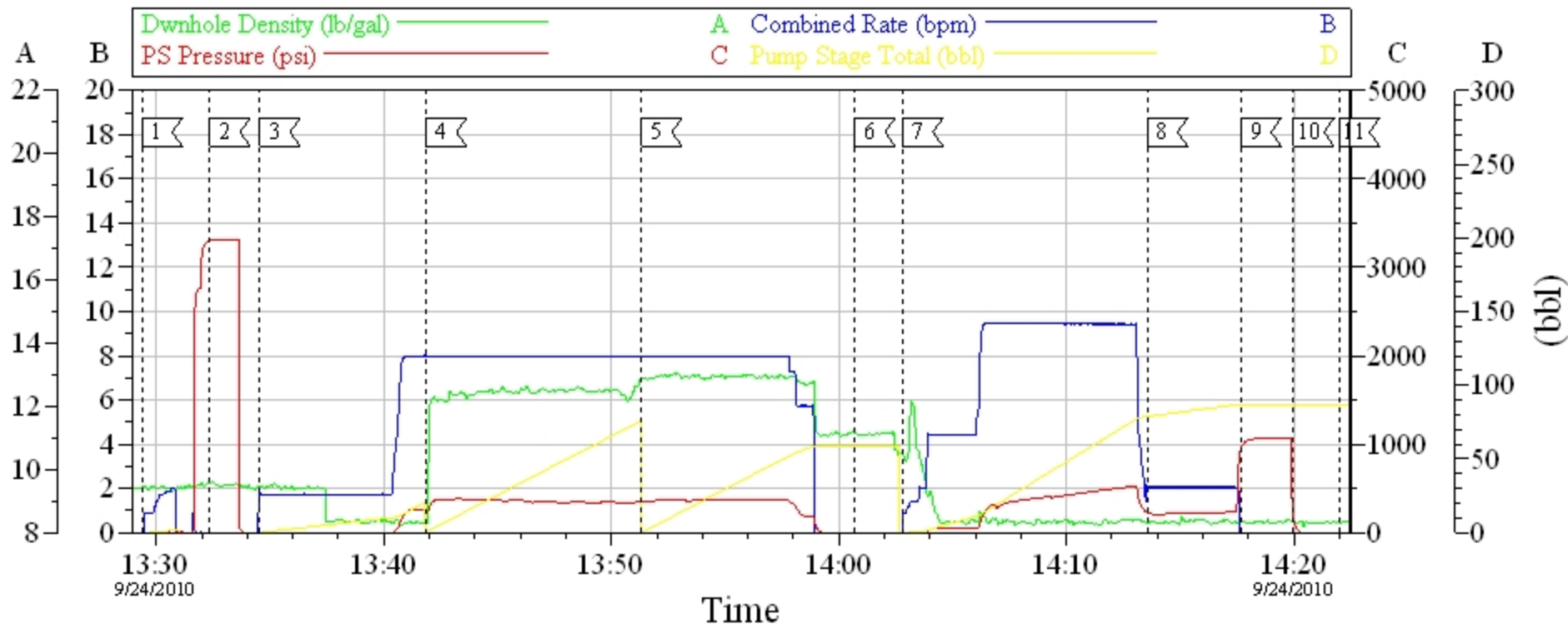
Sold To #: 300721	Ship To #: 2806304	Quote #:	Sales Order #: 7628304
Customer: WILLIAMS PRODUCTION RMT INC EBUSINE		Customer Rep: Dunihoo, Al	
Well Name: KP	Well #: 344-18	API/UWI #: 05-045-19477	
Field: KOKOPELLI	City (SAP): SILT	County/Parish: Garfield	State: Colorado
Legal Description:			
Lat: N 39.522 deg. OR N 39 deg. 31 min. 20.042 secs.		Long: W 107.595 deg. OR W -108 deg. 24 min. 19.166 secs.	
Contractor: CYCLONE 30		Rig/Platform Name/Num: CYCLONE 30	
Job Purpose: Cement Surface Casing			Ticket Amount:
Well Type: Development Well		Job Type: Cement Surface Casing	
Sales Person: KOHL, KYLE		Srvc Supervisor: REEVES, BRANDON	MBU ID Emp #: 287883

Activity Description	Date/Time	Cht #	Rate bbl/min	Volume bbl		Pressure psig		Comments
				Stage	Total	Tubing	Casing	
Call Out	09/24/2010 06:00							
Pre-Convoy Safety Meeting	09/24/2010 08:00							
Arrive at Location from Service Center	09/24/2010 09:30							
Assessment Of Location Safety Meeting	09/24/2010 09:45							
Other	09/24/2010 09:55							SPOT EQUIPMENT
Pre-Rig Up Safety Meeting	09/24/2010 10:10							
Rig-Up Equipment	09/24/2010 10:20							
Pre-Job Safety Meeting	09/24/2010 13:20							
Start Job	09/24/2010 13:30							TD-1178' TP-1162.10' SJ-44.90' MW-10.3# HOLE-13 1/2" CASING-9 5/8" 32.2#
Test Lines	09/24/2010 13:32						3100.0	
Pump Spacer 1	09/24/2010 13:34		8	20			260.0	FRESH WATER SPACER
Pump Lead Cement	09/24/2010 13:41		8	76.3			380.0	180 SKS. @ 12.3# 2.38 YIELD 13.75 WRQ.
Pump Tail Cement	09/24/2010 13:51		8	60.1			380.0	160 SKS. @ 12.8# 2.11 YIELD 11.75 WRQ.
Drop Top Plug	09/24/2010 14:00							
Pump Displacement	09/24/2010 14:03		10				580.0	FRESH WATER DISPLACEMENT
Slow Rate	09/24/2010 14:13		2	77			215.0	

Cementing Job Log

Activity Description	Date/Time	Cht #	Rate bbl/ min	Volume bbl		Pressure psig		Comments
				Stage	Total	Tubing	Casing	
Bump Plug	09/24/2010 14:17		2	87			1050. 0	PLUG LANDED. LANDED THE PLUG AT 230 PSI. PRESSURED UP TO 1050 PSI.
Check Floats	09/24/2010 14:19							FLOATS HELD
End Job	09/24/2010 14:21							WELL CIRCULATED BEFORE STARTING THE JOB. GOOD CIRCULATION THROUGHOUT THE JOB. PIPE WAS NOT RECIPROCATED. CIRCULATED 20 BBLS. OF CEMENT TO SURFACE.
Rig-Down Equipment	09/24/2010 14:30							THANKS FOR USING HALLIBURTON. BRANDON REEVES AND CREW

9 5/8" Surface



Event Log

Intersection	PP	Intersection	PP
1 START JOB	13:29:22 -9.000	2 TEST LINES	13:32:21 3306
3 PUMP H2O SPACER	13:34:33 -30.58	4 PUMP LEAD CEMENT	13:41:52 220.6
5 PUMP TAIL CEMENT	13:51:19 359.3	6 DROP TOP PLUG	14:00:41 -17.00
7 PUMP DISPLACEMENT	14:02:47 -16.00	8 SLOW RATE	14:13:33 227.9
9 LAND PLUG	14:17:39 955.8	10 CHECK FLOATS	14:19:59 142.7
11 END JOB	14:21:59 -19.00		

Customer: WILLIAMS PRODUCTION
Well Number: KP 344-18
Supervisor: BRANDON REEVES

Job Date: 09/24/2010
Job Type: SURFACE
Company Rep.: AL DUNNIHOO

Ticket #: 7628304
ADC Used: Yes
Elite/Operator: 3/JUSTIN BRUN

CemWin v1.7.2
24-Sep-10 14:29