

---

**WPX ENERGY ROCKY MOUNTAIN LLC-EBUS**

---

**SG 332-23  
GRAND VALLEY  
Garfield County , Colorado**

**Cement Surface Casing**  
27-Feb-2012

**Post Job Report**

*The Road to Excellence Starts with Safety*

<b>Sold To #:</b> 300721	<b>Ship To #:</b> 2910753	<b>Quote #:</b>	<b>Sales Order #:</b> 9303634
<b>Customer:</b> WPX ENERGY ROCKY MOUNTAIN LLC-EBUS		<b>Customer Rep:</b> Towers, Ron	
<b>Well Name:</b> SG	<b>Well #:</b> 332-23	<b>API/UWI #:</b> 05-045-20831	
<b>Field:</b> GRAND VALLEY	<b>City (SAP):</b> PARACHUTE	<b>County/Parish:</b> Garfield	<b>State:</b> Colorado
<b>Lat:</b> N 39.427 deg. OR N 39 deg. 25 min. 38.197 secs.		<b>Long:</b> W 108.082 deg. OR W -109 deg. 55 min. 6.002 secs.	
<b>Contractor:</b> H&P 271	<b>Rig/Platform Name/Num:</b> H&P 271		
<b>Job Purpose:</b> Cement Surface Casing			
<b>Well Type:</b> Development Well		<b>Job Type:</b> Cement Surface Casing	
<b>Sales Person:</b> SCOTT, KYLE		<b>Srvc Supervisor:</b> NICKLE, RYON	<b>MBU ID Emp #:</b> 454759

**Job Personnel**

HES Emp Name	Exp Hrs	Emp #	HES Emp Name	Exp Hrs	Emp #	HES Emp Name	Exp Hrs	Emp #
BANKS, BRENT A	0.0	371353	NICKLE, RYON	0.0	454759	TRIPLETT, MICHEAL Anthony	0.0	447908
WEAVER, CARLTON Russell	0.0	457698						

**Equipment**

HES Unit #	Distance-1 way	HES Unit #	Distance-1 way	HES Unit #	Distance-1 way	HES Unit #	Distance-1 way
10248065	60 mile	10867423	60 mile	10872429	60 mile	10897887	60 mile
10951250	60 mile	11808847	60 mile				

**Job Hours**

Date	On Location Hours	Operating Hours	Date	On Location Hours	Operating Hours	Date	On Location Hours	Operating Hours

**TOTAL** Total is the sum of each column separately

**Job**

**Job Times**

Formation Name	Top	Bottom	Called Out	Date	Time	Time Zone
<b>Form Type</b>	BHST		<b>On Location</b>	27 - Feb - 2012	05:40	MST
<b>Job depth MD</b>	1301. ft	<b>Job Depth TVD</b>	<b>Job Started</b>	27 - Feb - 2012	11:25	MST
<b>Water Depth</b>		<b>Wk Ht Above Floor</b>	<b>Job Completed</b>	27 - Feb - 2012	12:23	MST
<b>Perforation Depth (MD)</b>	<i>From</i>	<i>To</i>	<b>Departed Loc</b>	27 - Feb - 2012	13:30	MST

**Well Data**

Description	New / Used	Max pressure psig	Size in	ID in	Weight lbm/ft	Thread	Grade	Top MD ft	Bottom MD ft	Top TVD ft	Bottom TVD ft
OPEN HOLE				13.5				.	1315.	.	1315.
SURFACE CASING	Unknown		9.625	9.001	32.3		H-40	.	1301.	.	1301.

**Sales/Rental/3<sup>rd</sup> Party (HES)**

Description	Qty	Qty uom	Depth	Supplier
PLUG,CMTG, TOP,9 5/8,HWE,8.16 MIN/9.06 MA	1	EA		

**Tools and Accessories**

Type	Size	Qty	Make	Depth	Type	Size	Qty	Make	Depth	Type	Size	Qty	Make
Guide Shoe					Packer					Top Plug			
Float Shoe					Bridge Plug					Bottom Plug			
Float Collar					Retainer					SSR plug set			
Insert Float										Plug Container			
Stage Tool										Centralizers			

**Miscellaneous Materials**

Gelling Agt	Conc	Surfactant	Conc	Acid Type	Qty	Conc	%
Treatment Fld	Conc	Inhibitor	Conc	Sand Type	Size	Qty	

**Fluid Data**

**Stage/Plug #: 1**

Fluid #	Stage Type	Fluid Name	Qty	Qty uom	Mixing Density lbm/gal	Yield ft <sup>3</sup> /sk	Mix Fluid Gal/sk	Rate bbl/min	Total Mix Fluid Gal/sk
1	Fresh Water		20.00	bbl	8.33	.0	.0	.0	
2	Lead Cement	VERSACEM (TM) SYSTEM (452010)	180.0	sacks	12.3	2.38	13.75		13.75
	13.75 Gal	FRESH WATER							
3	Tail Cement	VERSACEM (TM) SYSTEM (452010)	160.0	sacks	12.8	2.11	11.75		11.75
	11.75 Gal	FRESH WATER							
4	Displacement Fluid		98.00	bbl	8.34	.0	.0	.0	
Calculated Values		Pressures		Volumes					
Displacement		Shut In: Instant		Lost Returns		Cement Slurry		Pad	
Top Of Cement		5 Min		Cement Returns		Actual Displacement		Treatment	
Frac Gradient		15 Min		Spacers		Load and Breakdown		Total Job	
Rates									
Circulating		Mixing		Displacement		Avg. Job			
Cement Left In Pipe	Amount	44 ft	Reason	Shoe Joint					
Frac Ring # 1 @	ID	Frac ring # 2 @	ID	Frac Ring # 3 @	ID	Frac Ring # 4 @	ID		
The Information Stated Herein Is Correct				Customer Representative Signature					

*The Road to Excellence Starts with Safety*

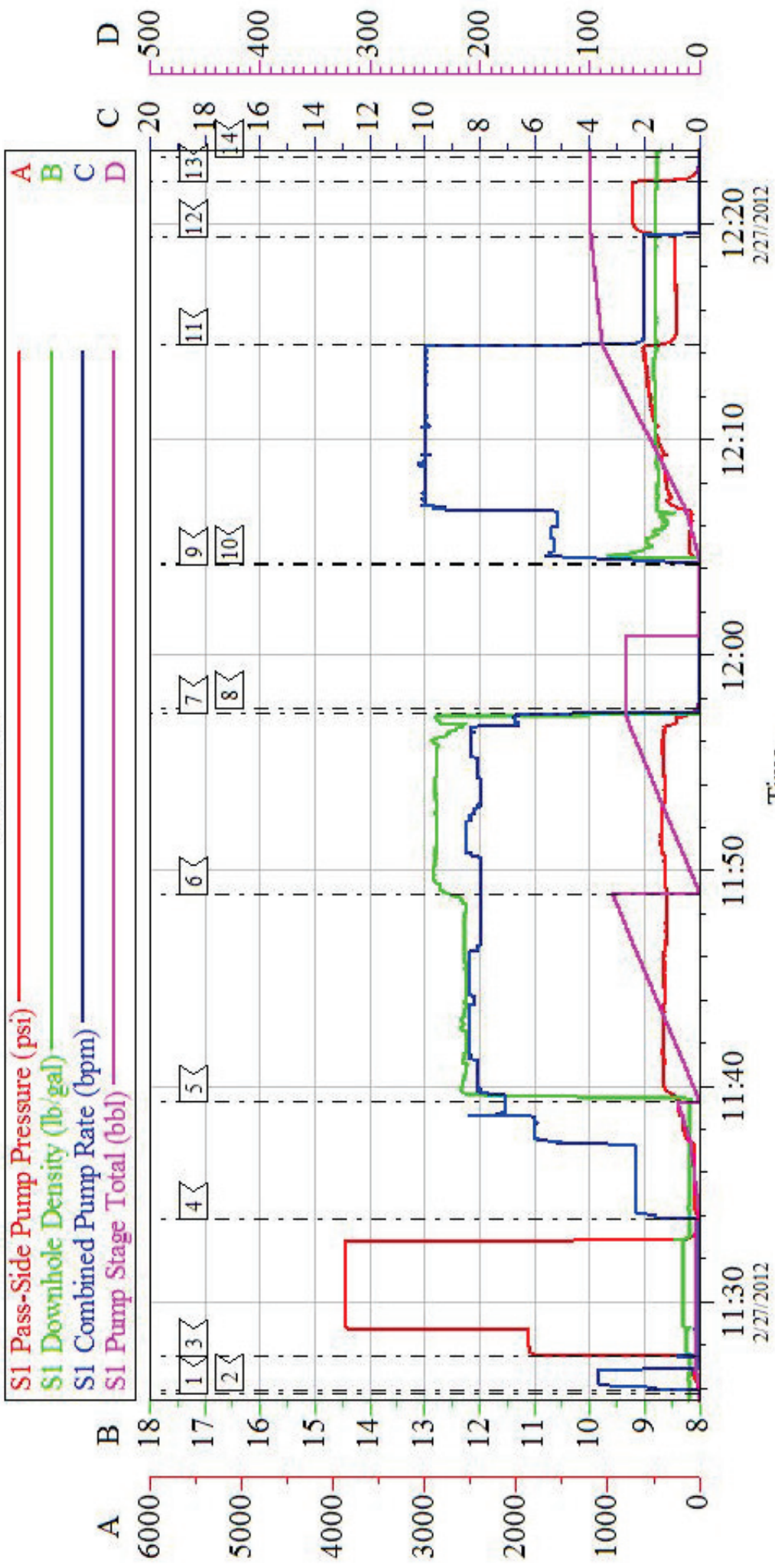
<b>Sold To #:</b> 300721	<b>Ship To #:</b> 2910753	<b>Quote #:</b>	<b>Sales Order #:</b> 9303634
<b>Customer:</b> WPX ENERGY ROCKY MOUNTAIN LLC-EBUS		<b>Customer Rep:</b> Towers, Ron	
<b>Well Name:</b> SG		<b>Well #:</b> 332-23	<b>API/UWI #:</b> 05-045-20831
<b>Field:</b> GRAND VALLEY	<b>City (SAP):</b> PARACHUTE	<b>County/Parish:</b> Garfield	<b>State:</b> Colorado
<b>Legal Description:</b>			
<b>Lat:</b> N 39.427 deg. OR N 39 deg. 25 min. 38.197 secs.		<b>Long:</b> W 108.082 deg. OR W -109 deg. 55 min. 6.002 secs.	
<b>Contractor:</b> H&P 271		<b>Rig/Platform Name/Num:</b> H&P 271	
<b>Job Purpose:</b> Cement Surface Casing			<b>Ticket Amount:</b>
<b>Well Type:</b> Development Well		<b>Job Type:</b> Cement Surface Casing	
<b>Sales Person:</b> SCOTT, KYLE		<b>Srvc Supervisor:</b> NICKLE, RYON	<b>MBU ID Emp #:</b> 454759

Activity Description	Date/Time	Cht #	Rate bbl/min	Volume bbl		Pressure psig		Comments
				Stage	Total	Tubing	Casing	
Pre-Convoy Safety Meeting	02/27/2012 01:20							ALL HES CEMENT CREW
Crew Leave Location	02/27/2012 01:30							THANK YOU FOR USING HALLIBURTON CEMENTING, RYON NICKLE AND CREW
Call Out	02/27/2012 01:30							HES CEMENT CREW
Pre-Convoy Safety Meeting	02/27/2012 03:50							ALL HES CEMENT CREW
Crew Leave Yard	02/27/2012 04:00							
Arrive At Loc	02/27/2012 05:30							RIG RIGGING UP CASING CREW
Assessment Of Location Safety Meeting	02/27/2012 05:35							ALL HES CEMENT CREW
Other	02/27/2012 08:40							SPOT EQUIPMENT; 1 CEMENTERS F 450, 1 ELITE PUMPING UNIT, 1 660 BULK TRANSPORT, 1 400 BULK TRANSPORT
Pre-Rig Up Safety Meeting	02/27/2012 08:50							ALL HES CEMENT CREW
Pre-Job Safety Meeting	02/27/2012 11:05							ALL HES CEMENT CREW, RIG CREW, COMPANY REP, AVAILABLE 3RD PARTY EE'S
Start Job	02/27/2012 11:25							TD- 1315' TP- 1301' SHOE- 44' OH- 13.5" SURFACE CASING- 9.625" 32.3#/FT H-40 CENTRALIZERS- 7=2 TURBULIZERS MUD- 9.8 PPG YP- 26

Activity Description	Date/Time	Cht #	Rate bbl/min	Volume bbl		Pressure psig		Comments
				Stage	Total	Tubing	Casing	
Other	02/27/2012 11:25		2	2			90.0	FILL LINES, FRESH WATER
Pressure Test	02/27/2012 11:27							STALL OUT @ 1890 PSI, HELD FOR 30 SEC. PRESSURE UP TO 3898 PSI HELD FOR 3 MIN, PRESSURE DROP TO 3884 PSI
Pump Spacer 1	02/27/2012 11:33		4	20			243.0	FRESH WATER
Pump Lead Cement	02/27/2012 11:39		8	76.2			405.0	180 SKS; 12.3 PPG, 2.38 FT <sup>3</sup> /SK, 13.75 GAL/SK
Pump Tail Cement	02/27/2012 11:48		8	60.1			388.0	160 SKS; 12.8 PPG, 2.11 FT <sup>3</sup> /SK, 11.75 GAL/SK
Shutdown	02/27/2012 11:57							WASH UP ON TOP OF PLUG PER CO REP
Drop Top Plug	02/27/2012 12:04							CO REP VERIFIED PLUG LAUNCHED
Pump Displacement	02/27/2012 12:04		10	88.9			620.0	FRESH WATER
Slow Rate	02/27/2012 12:14		2	10			272.0	
Bump Plug	02/27/2012 12:19						739.0	
Check Floats	02/27/2012 12:21							FLOATS HELD, RETURNED 1 1/4 BBLS H <sub>2</sub> O
End Job	02/27/2012 12:23							PIPE WAS NOT MOVED, GOOD RETURNS THROUGHOUT, 29 BBLS CEMENT TO SURFACE
Post-Job Safety Meeting (Pre Rig-Down)	02/27/2012 12:25							ALL HES CEMENT CREW

# WPX - SG 332-23

SURFACE

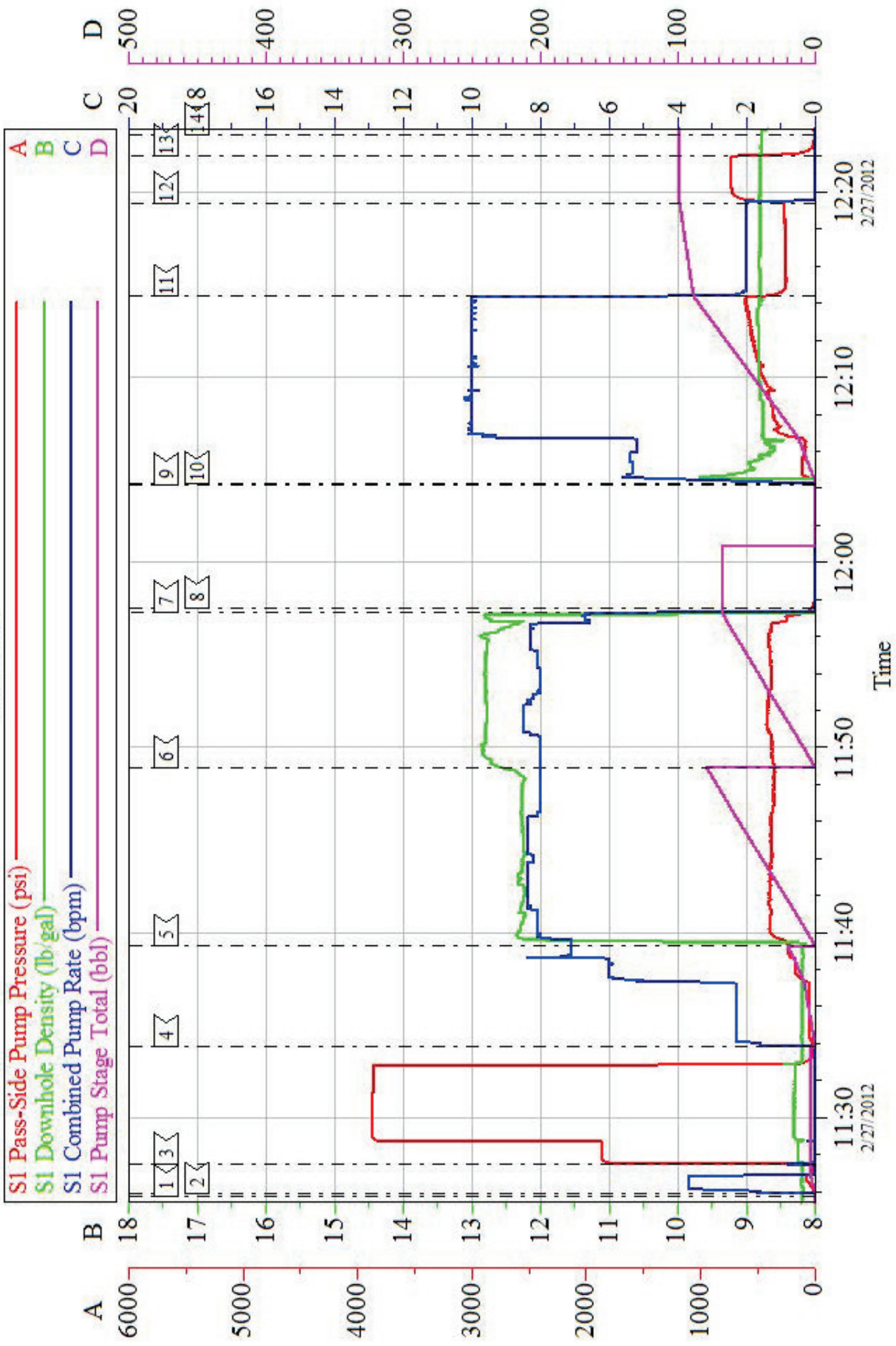


Local Event Log

1	START JOB	11:25:44	2	FILL LINES	11:25:53	3	PRESSURE TEST	11:27:28
4	PUMP H2O SPACER	11:33:49	5	PUMP LEAD CEMENT	11:39:15	6	PUMP TAIL CEMENT	11:48:55
7	SHUTDOWN	11:57:18	8	WASHUP ON PLUG	11:57:32	9	DROP TOP PLUG	12:04:11
10	PUMP DISPLACEMENT	12:04:17	11	SLOW RATE	12:14:22	12	BUMP PLUG	12:19:24
13	CHECK FLOATS	12:21:58	14	END JOB	12:23:07			

# WPX - SG 332-23

## SURFACE



Customer: WPX ENERGY ROCKY MOUNTAIN LLC-EBUS	Job Date: 27-Feb-2012	Sales Order #: 9303634
Well Description: SG 332-23	Job Type: SURFACE	ADC Used: YES
Company/Rep: RON TOWERS	Cement Supervisor: RYON NICKLE	Elite # / Operator: E7 / BRENT BANKS

OptiCem v6.4.10  
27-Feb-12 12:26

<b>Sales Order #:</b> 9303634	<b>Line Item:</b> 10	
<b>Customer:</b> WPX ENERGY ROCKY MOUNTAIN LLC-EBUS		<b>Job Type (BOM):</b> CMT SURFACE CASING BOM
<b>Customer Rep./Phone:</b> RON TOWERS		<b>API / UWI: (leave blank if unknown)</b> 05-045-20831
<b>Well Name:</b> SG		<b>Well Number:</b> 332-23
<b>Well Type:</b> Development Well	<b>Well Country:</b> United States of America	
<b>H2S Present:</b>	<b>Well State:</b> Colorado	<b>Well County:</b> Garfield

### KEY PERFORMANCE INDICATORS

General	
<b>Survey Conducted Date</b>	2/26/2012
The date the survey was conducted	

Cementing KPI Survey	
<b>Type of Job</b>	0
Select the type of job. (Cementing or Non-Cementing)	
<b>Select the Maximum Deviation range for this Job</b>	Vertical
What is the highest deviation for the job you just completed? This may not be the maximum well deviation.	
<b>Total Operating Time (hours)</b>	1
Total Operating Hours Including Rig-up, Pumping, Rig-down. Enter in decimal format.	
<b>HSE Incident, Accident, Injury</b>	No
HSE Incident, Accident, Injury. This should be recordable incidents only.	
<b>Was the job purpose achieved?</b>	Yes
Was the job delivered correctly as per customer agreed design?	
<b>Operating Hours (Pumping Hours)</b>	0
Total number of hours pumping fluid on this job. Enter in decimal format.	
<b>Customer Non-Productive Rig Time (hrs)</b>	0
Lost time due to Halliburton in the start, execution, or completion of an ordered service or product, or delays in a follow-on service. Enter in decimal format. 0 if none.	
<b>Type of Rig Classification Job Was Performed</b>	Drilling Rig (Portable)
Type Of Rig (classification) Job Was Performed On	
<b>Number Of JSAs Performed</b>	0
Number Of Jsas Performed	
<b>Number of Unplanned Shutdowns</b>	0
Unplanned shutdown is when injection stops for any period of time.	
<b>Was this a Primary Cement Job (Yes / No)</b>	Yes

<b>Sales Order #:</b> 9303634	<b>Line Item:</b> 10	
<b>Customer:</b> WPX ENERGY ROCKY MOUNTAIN LLC-EBUS		<b>Job Type (BOM):</b> CMT SURFACE CASING BOM
<b>Customer Rep./Phone:</b> RON TOWERS		<b>API / UWI: (leave blank if unknown)</b> 05-045-20831
<b>Well Name:</b> SG		<b>Well Number:</b> 332-23
<b>Well Type:</b> Development Well	<b>Well Country:</b> United States of America	
<b>H2S Present:</b>	<b>Well State:</b> Colorado	<b>Well County:</b> Garfield

Primary Cement Job= Casing job, Liner job, or Tie-back job.	
<b>Did We Run Wiper Plugs?</b> Did We Run Top And Bottom Casing Wiper Plugs?	Top
<b>Mixing Density of Job Stayed in Designed Density Range (0-100%)</b> Density Range defined as +/- .20 ppg. Calculation: Total BBLs cement mixed at designed density divided by total BBLs of cement multiplied by 100	0
<b>Was Automated Density Control Used?</b> Was Automated Density Control (ADC) Used ?	Yes
<b>Pump Rate (percent) of Job Stayed At Designed Pump Rate</b> Pump Rate range defined as +/- 1bbl/min. Calculation: Total BBLs of fluid pumped at the designed rate divided by Total BBLs of fluid pumped, multiplied by 100	0
<b>Nbr of Remedial Sqz Jobs Rqd - Competition</b> Number Of Remedial Squeeze Jobs Required After Primary Job Performed By Competition	0
<b>Nbr of Remedial Plug Jobs Rqd - HES</b> Number Of Remedial Plug Jobs Needed After Primary Plug Pumped By HES	0
<b>Nbr of Remedial Sqz Jobs Rqd - HES</b> Number Of Remedial Squeeze Jobs Required After Primary Job Performed By HES	0