

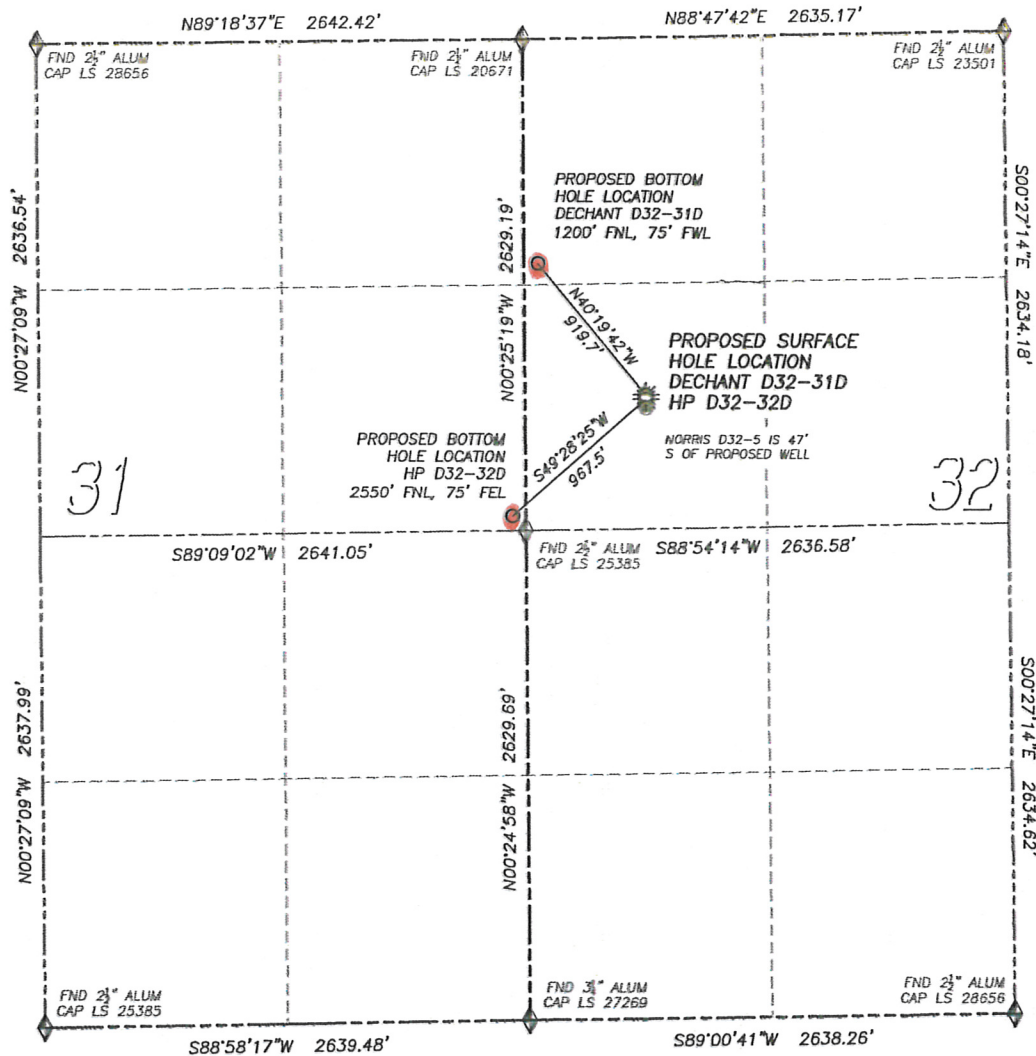
DALEY LAND SURVEYING, INC.

PARKER, CO. 80134

303 953 9841

# MULTI-WELL PAD DIRECTIONAL LAYOUT DECHANT D32-31D & HP D32-32D

SECTION 32, TOWNSHIP 3 NORTH, RANGE 64 WEST OF THE 6TH PRINCIPAL MERIDIAN

**NAD 83 LATITUDE AND LONGITUDE****DECHANT D32-31D SURFACE HOLE:**

LATITUDE: N40.18367°  
 LONGITUDE: W104.58225°  
 ELEVATION: 4822'  
 FOOTAGE: 1914' FNL, 665' FWL  
 PDOP: 1.8  
 QTR/QTR: SW4/NW4  
 PROP LINE: 665'± WEST

**BOTTOM HOLE:**

LATITUDE: N40.18561°  
 LONGITUDE: W104.58435°  
 FOOTAGE: 1200' FNL, 75' FWL

**NEAREST EXISTING WELL:**

NORRIS D32-5 SURFACE HOLE  
 LATITUDE: N40.18348°  
 LONGITUDE: W104.58225°  
 ELEVATION: 4822'  
 69' SOUTH

**NAD 83 LATITUDE AND LONGITUDE****HP D32-32D SURFACE HOLE:**

LATITUDE: N40.18360°  
 LONGITUDE: W104.58225°  
 ELEVATION: 4823'  
 FOOTAGE: 1936' FNL, 665' FWL  
 PDOP: 1.7  
 QTR/QTR: SW4/NW4  
 PROP LINE: 665'± WEST

**BOTTOM HOLE:**

LATITUDE: N40.18190°  
 LONGITUDE: W104.58490°  
 FOOTAGE: 2550' FNL, 75' FEL  
 OF SECTION 31

**NEAREST EXISTING WELL:**

NORRIS D32-5 SURFACE HOLE  
 LATITUDE: N40.18348°  
 LONGITUDE: W104.58225°  
 ELEVATION: 4822'  
 47' SOUTH



DALEY LAND SURVEYING, INC.

PARKER, CO. 80134

303 953 9841

## MULTI-WELL PAD LOCATION DRAWING

### DECHANT D32-31D & HP D32-32D

SECTION 32, TOWNSHIP 3 NORTH, RANGE 64 WEST OF THE 6TH PRINCIPAL MERIDIAN

