

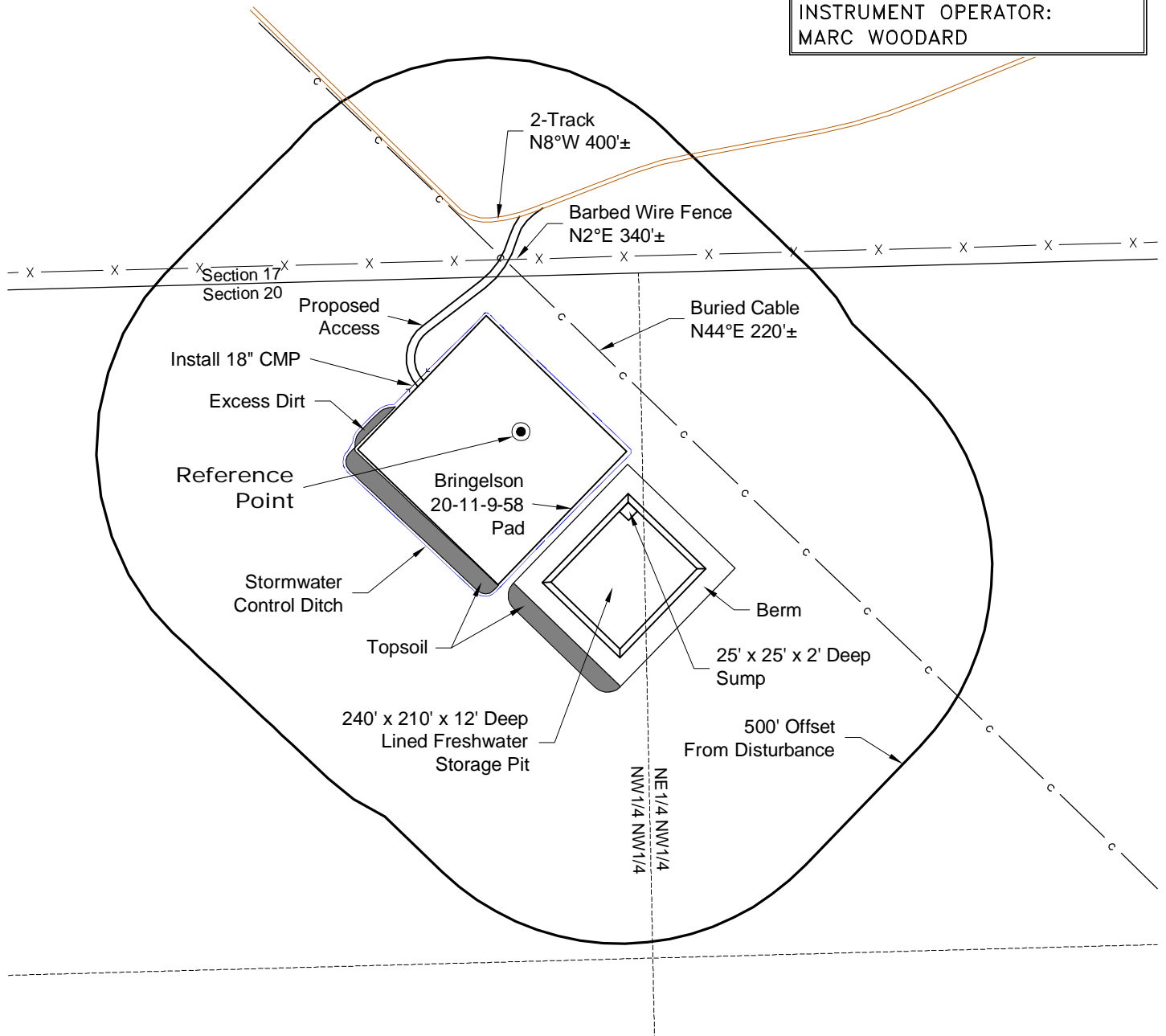
LOCATION DRAWING

VEGETATION:
CRP

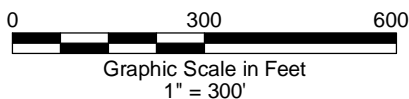
SURFACE USE:
NON CROP LAND

REFERENCE POINT

LATITUDE: 40.74303
LONGITUDE: -103.89375
FOOTAGE: 302 FNL 1087 FWL
GROUND ELEVATION: 4856.8
PDOP: 1.9 DATE: 2/22/2012
INSTRUMENT OPERATOR: MARC WOODARD



North



DISTURBANCE ACREAGE:
4.0± DRILLING OPERATIONS
2.3± FRESHWATER STORAGE PIT
1.0± INTERIM RECLAIM

NOTE:
ALL PRODUCTION FACILITIES WILL BE ON PAD.

3/2/12



LAND SURVEYING AND MAPPING
LAFAYETTE - WINTER PARK
Ph 303 666 0379 Fx 303 665 6320

CARRIZO OIL & GAS, INC
BRINGELSON 20-11-9-58 PAD

NW1/4 NW1/4 SECTION 20 T9N R58W
6th PM WELD COUNTY COLORADO