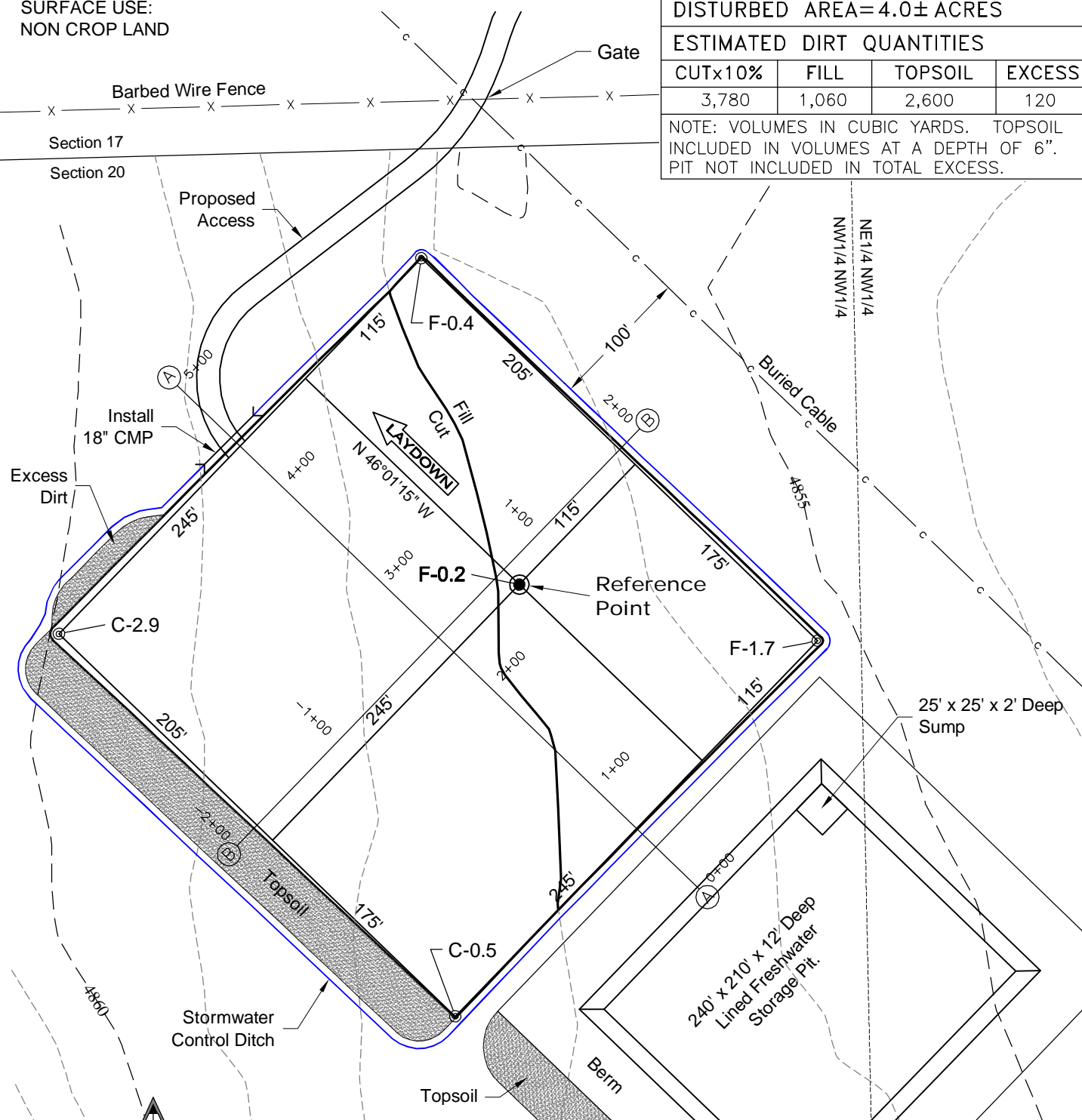


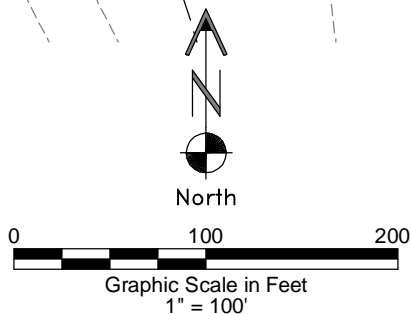
1 of 2

SURFACE USE:
NON CROP LAND

PAD 360'X380' ELEV=4857'			
DISTURBED AREA=4.0± ACRES			
ESTIMATED DIRT QUANTITIES			
CUTx10%	FILL	TOPSOIL	EXCESS
3,780	1,060	2,600	120
NOTE: VOLUMES IN CUBIC YARDS. TOPSOIL INCLUDED IN VOLUMES AT A DEPTH OF 6". PIT NOT INCLUDED IN TOTAL EXCESS.			



NOTE:
10% ALLOWANCE IS MADE FOR SOIL EXPANSION.



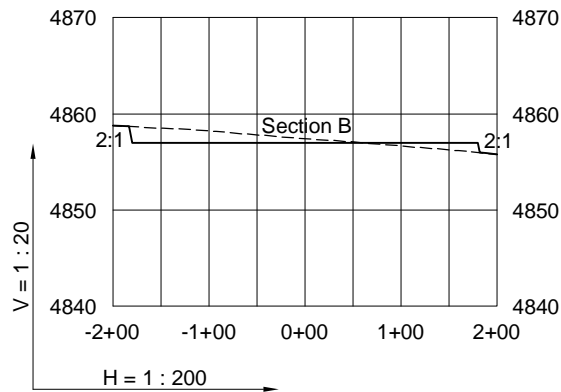
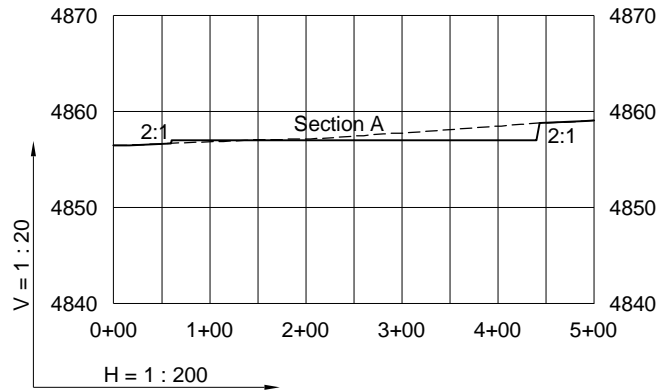
LAND SURVEYING AND MAPPING
LAFAYETTE - WINTER PARK
Ph 303 666 0379 Fx 303 665 6320

CARRIZO OIL & GAS, INC
BRINGELSON 20-11-9-58 PAD

NW1/4 NW1/4 SECTION 20 T9N R58W
6th PM WELD COUNTY COLORADO

CONSTRUCTION LAYOUT DRAWING

2 of 2



3/2/12

----- Existing Ground
 _____ Proposed Grade

GEO SURV

LAND SURVEYING AND MAPPING
 LAFAYETTE - WINTER PARK
 Ph 303 666 0379 Fx 303 665 6320

CARRIZO OIL & GAS, INC
 BRINGELSON 20-11-9-58 PAD

NW1/4 NW1/4 SECTION 20 T9N R58W
 6th PM WELD COUNTY COLORADO