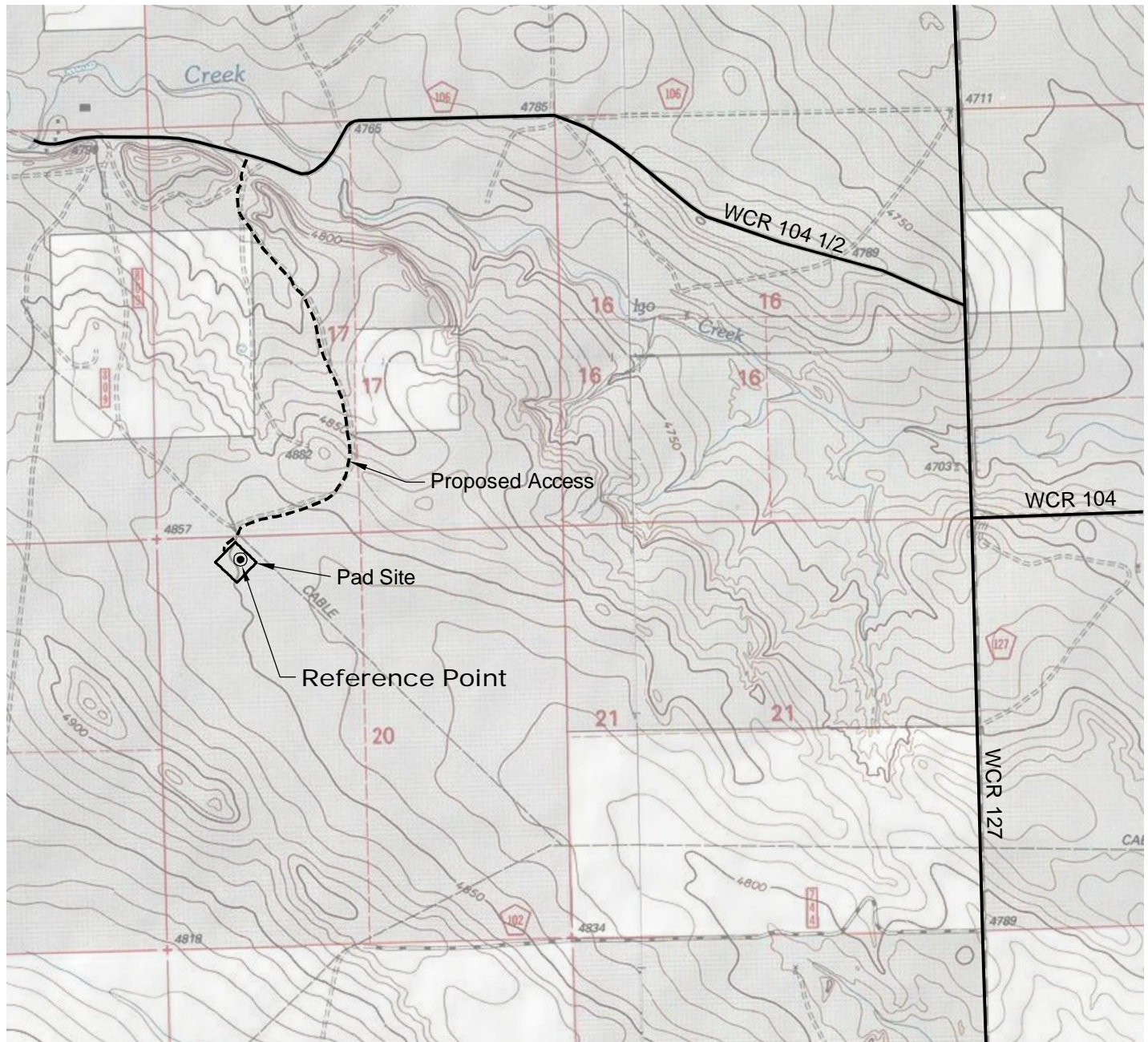


ACCESS ROAD MAP



DRIVING DIRECTIONS:

- MP 0.0 - Intersection of Highway 14 & WCR 129 in Raymer;
North on WCR 129
- MP 3.8 - Road veers left, continue northwest
- MP 4.6 - Road veers right, continue north on WCR 127 1/2
- MP 6.3 - Road veers left, continue northwest
- MP 7.1 - Road veers right, continue north on WCR 127
- MP 10.3 - Left on WCR 104.5
- MP 12.2 - Left on access to Bringelson 20-11-9-58
- MP 13.4 - Bringelson 20-11-9-58 Pad

3/2/12



North



Graphic Scale in Feet
1" = 2000'



LAND SURVEYING AND MAPPING
LAFAYETTE - WINTER PARK
Ph 303 666 0379 Fx 303 665 6320

CARRIZO OIL & GAS, INC
BRINGELSON 20-11-9-58 PAD

NW1/4 NW1/4 SECTION 20 T9N R58W
6th PM WELD COUNTY COLORADO