

T26S, R70W, 6th P.M.

SWEPI LP

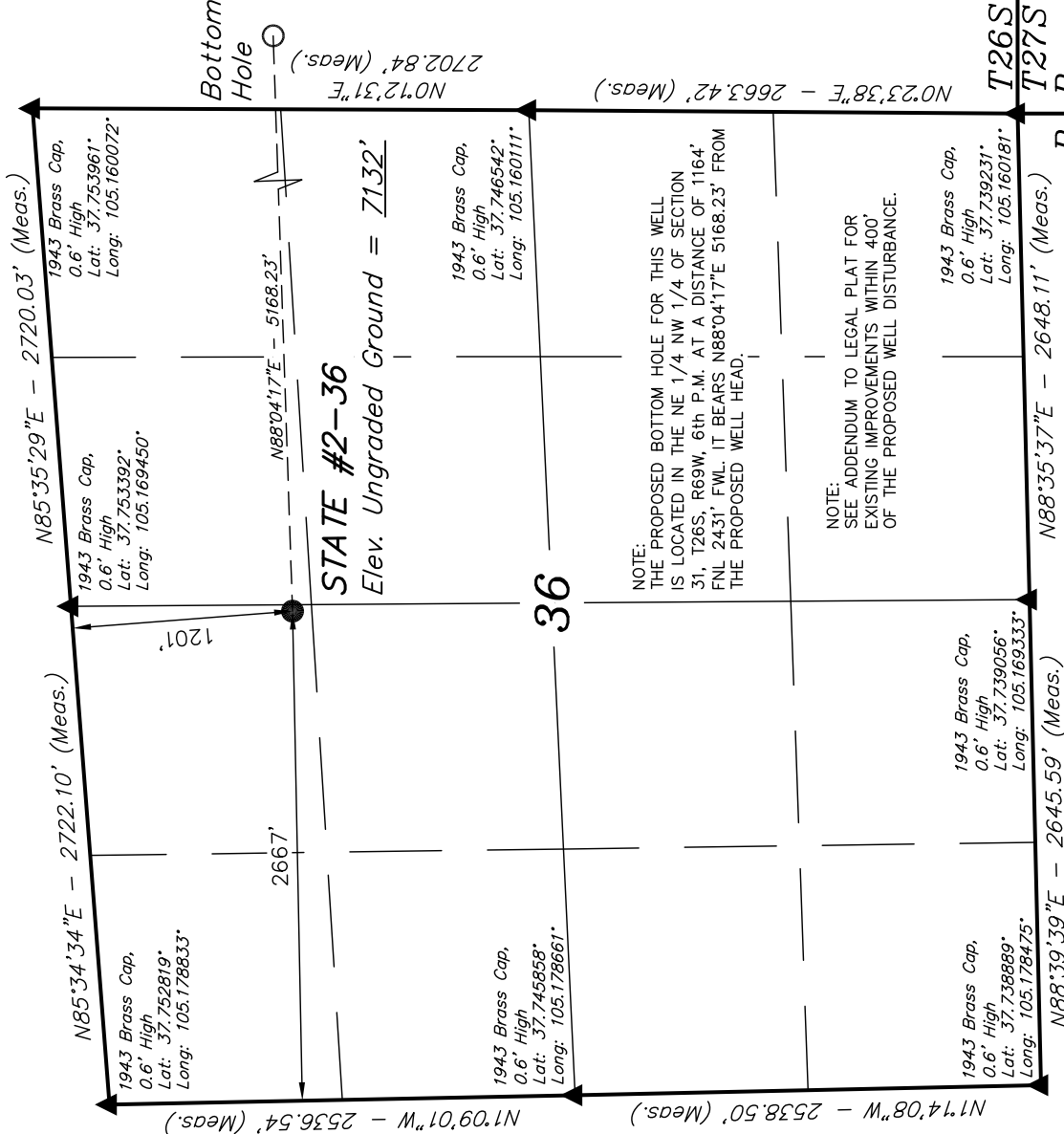
Well location, STATE #2-36, (SURFACE LOCATION) located as shown in the NE 1/4 NW 1/4 of Section 36, T26S, R70W, 6th P.M., Huerfano County, Colorado.

BASIS OF ELEVATION

SPOT ELEVATION IN THE NORTHEAST 1/4 OF SECTION 33, T26S, R70W, 6th P.M., TAKEN FROM THE LITTLE SHEEP MOUNTAIN QUADRANGLE, COLORADO, 7.5 MINUTE QUAD (TOPOGRAPHIC MAP) PUBLISHED BY THE UNITED STATES DEPARTMENT OF THE INTERIOR, GEOLOGICAL SURVEY. SAID ELEVATION IS MARKED AS BEING 7455 FEET.

BASIS OF BEARINGS

BASIS OF BEARINGS IS A G.P.S. OBSERVATION.



LEGEND:

- = 90° SYMBOL
- = PROPOSED WELL HEAD.
- ▲ = SECTION CORNERS LOCATED.



CERTIFICATE

THIS IS TO CERTIFY THAT THE ABOVE PLAT WAS PREPARED FROM FIELD NOTES OF ACTUAL SURVEYS MADE BY ME OR UNDER MY SUPERVISION AND THAT THE SAME ARE TRUE AND CORRECT TO THE BEST OF MY KNOWLEDGE AND BELIEF.

REGISTERED LAND SURVEYOR  
REGISTRATION NO. 17492  
STATE OF COLORADO  
02-08-12

REV.: 02-08-12

UINTAH ENGINEERING & LAND SURVEYING  
85 SOUTH 200 EAST - VERNAL, UTAH 84078  
(435) 789-1017

SCALE 1" = 1000'	DATE SURVEYED: 01-13-12	DATE DRAWN: 01-23-12
PARTY J.H. C.M. J. I.	REFERENCES G.L.O. PLAT	
WEATHER COOL	FILE	
		SWEPI LP

NAD 83 (SURFACE LOCATION)	
LATITUDE = 37°45'00.28"	(37.750078)
LONGITUDE = 105°10'10.36"	(105.169544)
NAD 27 (SURFACE LOCATION)	
LATITUDE = 37°45'00.26"	(37.750072)
LONGITUDE = 105°10'08.36"	(105.168989)

PDOP = 2.8

R 70 69 W

T26S  
T27S

T26S, R69W, 6th P.M.

SWEPI LP

1943 Brass Cap,  
0.6' High  
Lat: 37.753961°  
Long: 105.160072°

S88°10'23"E - 5095.45' (Meas.)

Surface  
Location  
NO°12'31"E  
2702.84' (Meas.)

Lot 1

STATE #2-36  
Target Bottom Hole

2431'  
N88°04'17"E  
5168.23'

Set Marked Stone,  
Lat: 37.753506°  
Long: 105.142464°

Lot 2

1943 Brass Cap,  
0.6' High  
Lat: 37.746542°  
Long: 105.160111°

31

Lot 3

Lot 4

1943 Brass Cap,  
0.6' High  
Lat: 37.739231°  
Long: 105.160181°

R R  
70 69  
W W

EAST - 5280.00' (G.L.O)

T26S  
T27S

NOTE:  
THE PROPOSED BOTTOM HOLE BEARS N88°04'17"E  
5168.23' FROM THE PROPOSED WELL HEAD WHICH  
IS LOCATED IN THE NE 1/4 NW 1/4 OF SECTION 36,  
T26S, R70W, 6th P.M. AT A DISTANCE OF 1201' FNL  
2667' FWL.

LEGEND:

- = 90° SYMBOL
- = PROPOSED WELL HEAD.
- ▲ = SECTION CORNERS LOCATED.

NAD 83 (TARGET BOTTOM HOLE)	
LATITUDE = 37°45'01.97"	(37.750547)
LONGITUDE = 105°09'06.07"	(105.151686)
NAD 27 (TARGET BOTTOM HOLE)	
LATITUDE = 37°45'01.95"	(37.750542)
LONGITUDE = 105°09'04.06"	(105.151128)

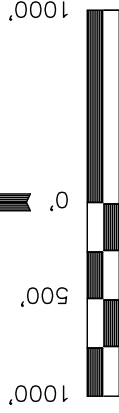
Well location, STATE #2-36, (TARGET BOTTOM HOLE) located as shown in the NE 1/4 NW 1/4 of Section 31, T26S, R69W, 6th P.M., Huerfano County, Colorado.

BASIS OF ELEVATION

SPOT ELEVATION IN THE NORTHEAST 1/4 OF SECTION 33, T26S, R70W, 6th P.M., TAKEN FROM THE LITTLE SHEEP MOUNTAIN QUADRANGLE, COLORADO, 7.5 MINUTE QUAD (TOPOGRAPHIC MAP) PUBLISHED BY THE UNITED STATES DEPARTMENT OF THE INTERIOR, GEOLOGICAL SURVEY. SAID ELEVATION IS MARKED AS BEING 7455 FEET.

BASIS OF BEARINGS

BASIS OF BEARINGS IS A G.P.S. OBSERVATION.



S C A L E

CERTIFICATE

THIS IS TO CERTIFY THAT THE ABOVE PLAT WAS PREPARED FROM FIELD NOTES OF ACTUAL SURVEYS MADE BY ME OR UNDER MY SUPERVISION AND THAT THE SAME ARE TRUE AND CORRECT TO THE BEST OF MY KNOWLEDGE AND BELIEF.

REGISTERED LAND SURVEYOR  
REGISTRATION NO. 17492  
STATE OF COLORADO  
02-08-12

REV.: 02-08-12

UINTAH ENGINEERING & LAND SURVEYING

85 SOUTH 200 EAST - VERNAL, UTAH 84078

(435) 789-1017

SCALE 1" = 1000'	DATE SURVEYED: 01-13-12	DATE DRAWN: 01-23-12
PARTY J.H. C.M. J.I.	REFERENCES G.L.O. PLAT	
WEATHER COOL	FILE	
		SWEPI LP



SWEPI LP  
ADDENDUM TO LEGAL PLAT FOR  
STATE #2-36  
SECTION 36, T26S, R70W, 6th P.M.  
1201' FNL 2667' FWL

SCALE: 1" = 200'  
DATE: 01-23-12  
DRAWN BY: J.I.  
REV.: 02-08-12

