

**LEGEND:**

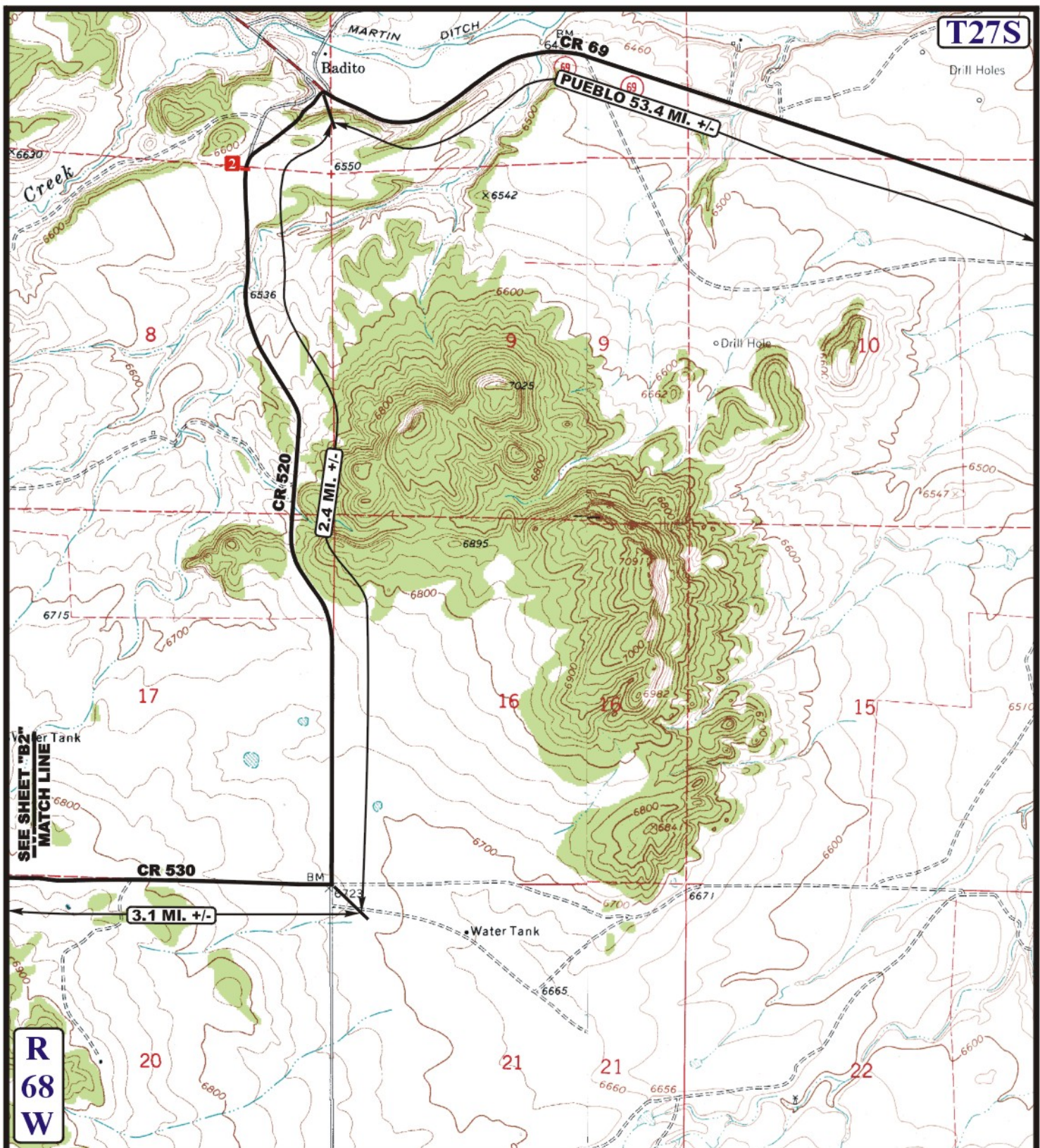


SWEPI LP

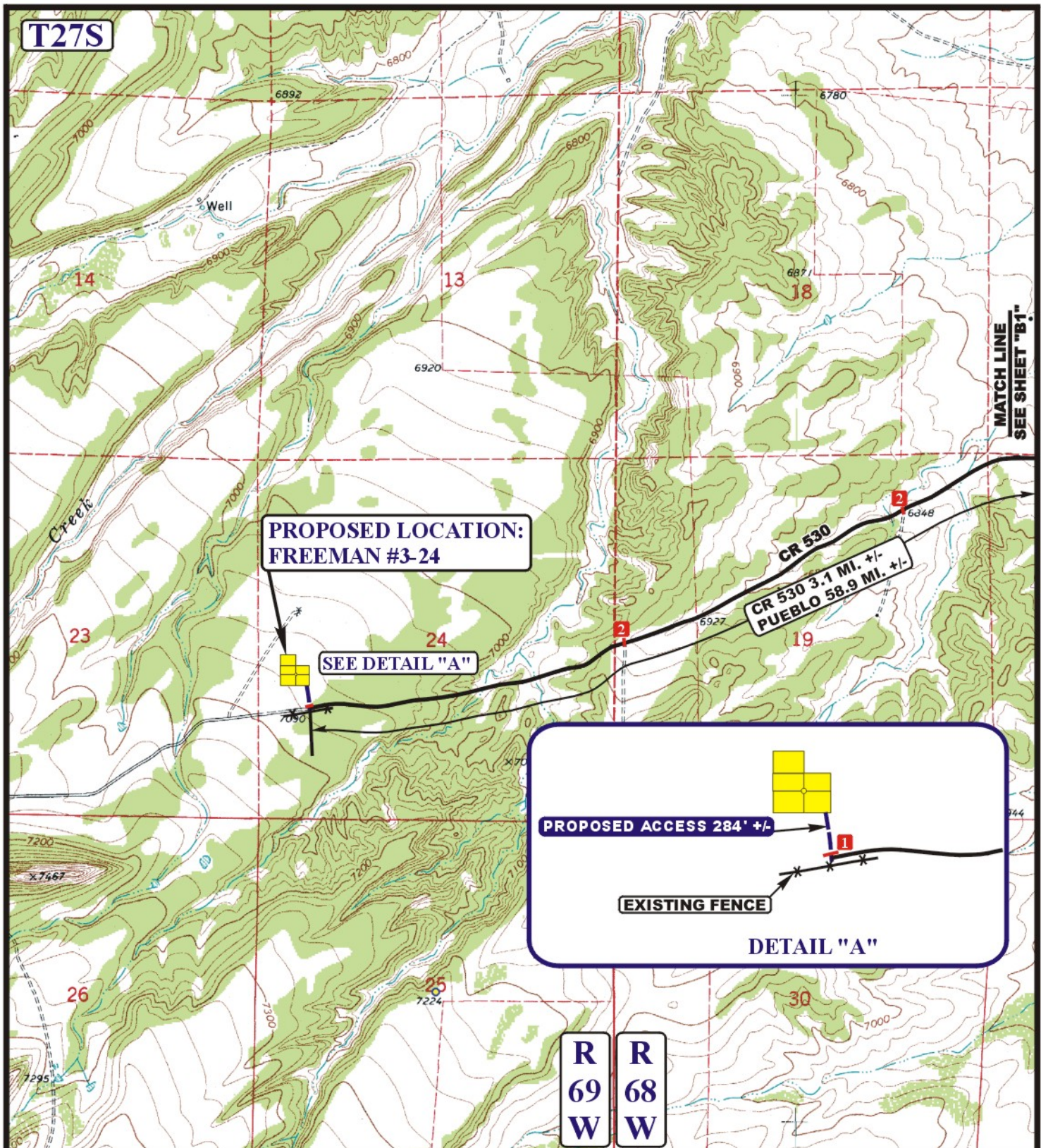
**FREEMAN #3-24**

**SECTION 24, T27S, R69W, 6th P.M.**  
**2105' FSL 536' FWL**









# **LEGEND:**

- EXISTING ROAD
- PROPOSED ACCESS ROAD
- EXISTING FENCE
- 1 18" CMP REQUIRED 2 UPGRADE CATTLE GUARD



**Utah Engineering & Land Surveying**  
85 South 200 East Vernal, Utah 84078  
(435) 789-1017 \* FAX (435) 789-1813



## **SWEPI LP**

**FREEMAN #3-24**  
**SECTION 24, T27S, R69W, 6th P.M.**  
**2105' FSL 536' FWL**

**ACCESS ROAD**  
**MAP**

**01 18 12**  
MONTH DAY YEAR

SCALE: 1" = 2000' DRAWN BY: C.I. REVISED: 05-16-12

**B2**  
**TOPO**