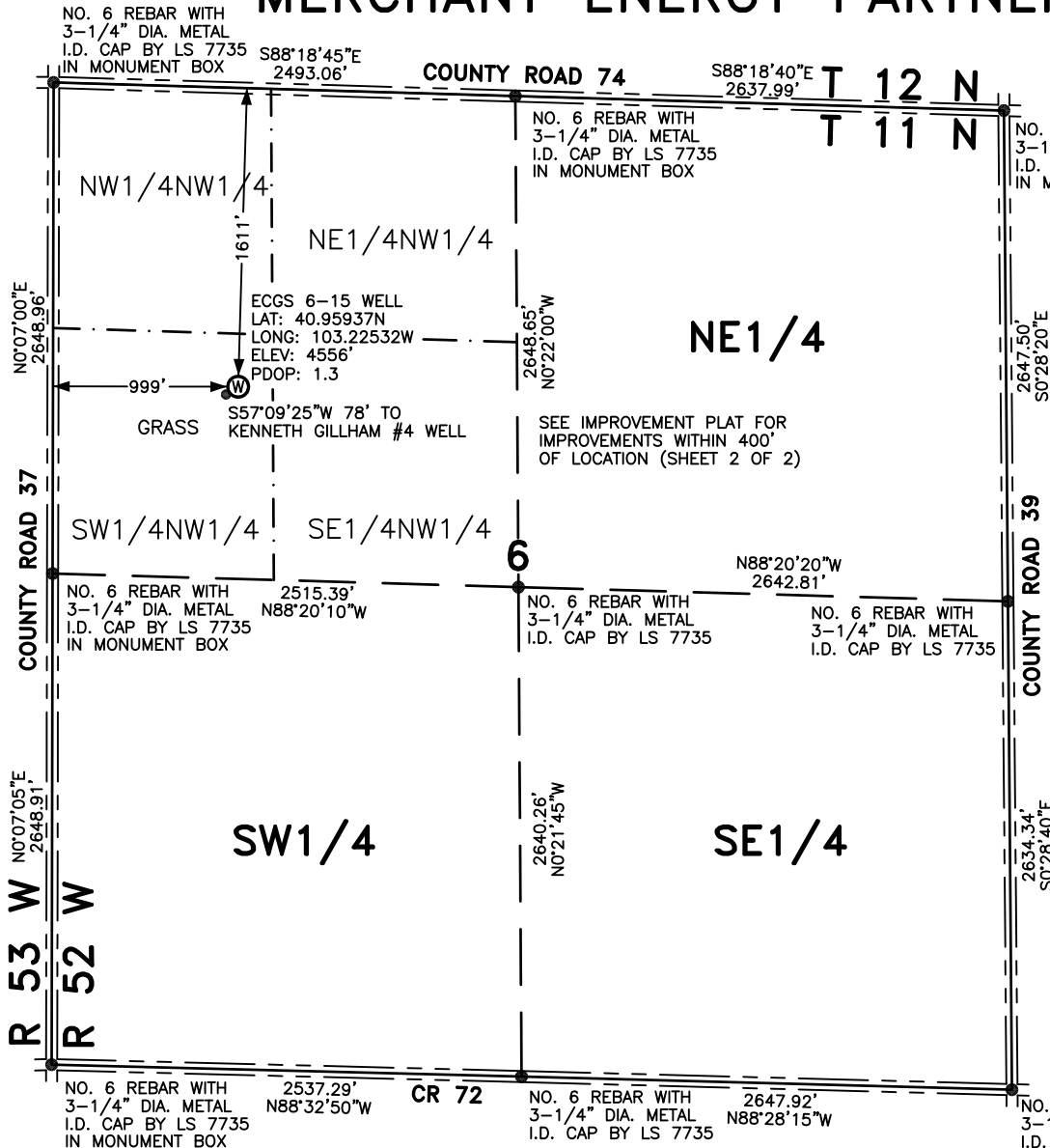


# WELL LOCATION FOR MERCHANT ENERGY PARTNERS, LLC



## NOTES

BEARINGS SHOWN HEREON ARE BASED UPON RTK GPS OBSERVATIONS

SEE IMPROVEMENT PLAT FOR IMPROVEMENTS WITHIN 400' OF LOCATION. (SHEET 2)

USGS QUAD MAP: PADRONI NW, COLO.

LAT/LONG VALUES ARE NAD83

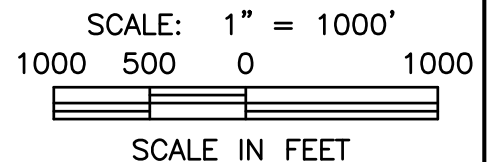
ELEVATIONS BASED ON NAVD 1988

ALL DISTANCES TO SECTION LINES ARE MEASURED PERPENDICULAR TO AND ARE AT RIGHT ANGLES TO SAID SECTION LINES.

## LEGEND

- W FIELD SURVEYED WELL LOCATION
- == == == ROAD
- x - x - FENCE

THIS WELL LOCATION PLAT HAS BEEN PREPARED FOR MERCHANT ENERGY PARTNERS, LLC, TO LOCATE THE ECGS 6-15 WELL BEING 999 FEET FROM THE WEST LINE AND 1611 FEET FROM THE NORTH LINE IN THE SW1/4NW1/4 OF SECTION 6, TOWNSHIP 11 NORTH, RANGE 52 WEST OF THE 6TH P.M., LOGAN COUNTY, COLORADO. THE SURFACE ELEVATION AT THIS POINT IS 4556 FEET. THIS IS NOT A LAND SURVEY PLAT.



## LEIBERT-McATEE & ASSOCIATES, INC.

P.O. BOX 442 615 SOUTH TENTH AVENUE  
STERLING, CO 80751 970-522-1960

FIELD DATE: 3-27-12	DWG DATE: 4-20-12	GPS OPERATOR: DARREN VEAL
ECGS 6-15	DWG NO. 372-12	SHEET 1 OF 2