

---

**WPX ENERGY ROCKY MOUNTAIN LLC-EBUS**

---

**SG 532-23  
GRAND VALLEY  
Garfield County , Colorado**

**Cement Surface Casing**  
03-Mar-2012

**Post Job Summary**

*The Road to Excellence Starts with Safety*

<b>Sold To #:</b> 300721	<b>Ship To #:</b> 2910795	<b>Quote #:</b>	<b>Sales Order #:</b> 9303642
<b>Customer:</b> WPX ENERGY ROCKY MOUNTAIN LLC-EBUS		<b>Customer Rep:</b> Shults, Mike	
<b>Well Name:</b> SG		<b>Well #:</b> 532-23	<b>API/UWI #:</b> 05-045-20837
<b>Field:</b> GRAND VALLEY	<b>City (SAP):</b> PARACHUTE	<b>County/Parish:</b> Garfield	<b>State:</b> Colorado
<b>Lat:</b> N 39.427 deg. OR N 39 deg. 25 min. 38.269 secs.		<b>Long:</b> W 108.082 deg. OR W -109 deg. 55 min. 5.999 secs.	
<b>Contractor:</b> H&P 271		<b>Rig/Platform Name/Num:</b> H&P 271	
<b>Job Purpose:</b> Cement Surface Casing			
<b>Well Type:</b> Development Well		<b>Job Type:</b> Cement Surface Casing	
<b>Sales Person:</b> MAYO, MARK		<b>Srvc Supervisor:</b> MAGERS, MICHAEL	<b>MBU ID Emp #:</b> 339439

**Job Personnel**

HES Emp Name	Exp Hrs	Emp #	HES Emp Name	Exp Hrs	Emp #	HES Emp Name	Exp Hrs	Emp #
DEUSSEN, EDWARD Eric	5.5	485182	EICKHOFF, ROBERT Edward	5.5	495311	JENSEN, JESSE Robert	5.5	478774
MAGERS, MICHAEL Gerard	5.5	339439						

**Equipment**

HES Unit #	Distance-1 way	HES Unit #	Distance-1 way	HES Unit #	Distance-1 way	HES Unit #	Distance-1 way
10248057	60 mile	10533645	60 mile	10871245	60 mile	11139328	60 mile
11259886	60 mile	11360881	60 mile				

**Job Hours**

Date	On Location Hours	Operating Hours	Date	On Location Hours	Operating Hours	Date	On Location Hours	Operating Hours
03/03/2012	1.5	0	03/04/2012	4	1:10			
<b>TOTAL</b>			<i>Total is the sum of each column separately</i>					

**Job**

**Job Times**

Formation Name	Top	Bottom	Called Out	Date	Time	Time Zone
<b>Formation Depth (MD)</b>			<b>On Location</b>	03 - Mar - 2012	12:00	MST
<b>Form Type</b>		BHST	<b>Job Started</b>	03 - Mar - 2012	22:30	MST
<b>Job depth MD</b>	1465. ft	<b>Job Depth TVD</b>	1465. ft	<b>Job Completed</b>	04 - Mar - 2012	02:08
<b>Water Depth</b>		<b>Wk Ht Above Floor</b>	3. ft	<b>Job Completed</b>	04 - Mar - 2012	03:16
<b>Perforation Depth (MD)</b>	From	To	<b>Departed Loc</b>	04 - Mar - 2012	04:00	MST

**Well Data**

Description	New / Used	Max pressure psig	Size in	ID in	Weight lbm/ft	Thread	Grade	Top MD ft	Bottom MD ft	Top TVD ft	Bottom TVD ft
<b>Sales/Rental/3<sup>rd</sup> Party (HES)</b>											

Description	Qty	Qty uom	Depth	Supplier
PLUG,CMTG, TOP,9 5/8,HWE,8.16 MIN/9.06 MA	1	EA		

**Tools and Accessories**

Type	Size	Qty	Make	Depth	Type	Size	Qty	Make	Depth	Type	Size	Qty	Make
Guide Shoe					Packer					Top Plug	9.625	1	HES
Float Shoe					Bridge Plug					Bottom Plug			
Float Collar					Retainer					SSR plug set			
Insert Float										Plug Container	9.625	1	HES
Stage Tool										Centralizers			

**Miscellaneous Materials**

Gelling Agt	Conc	Surfactant	Conc	Acid Type	Qty	Conc	%
Treatment Fld	Conc	Inhibitor	Conc	Sand Type	Size	Qty	

**Fluid Data**

Stage/Plug #: 1										
Fluid #	Stage Type	Fluid Name	Qty	Qty uom	Mixing Density lbm/gal	Yield ft <sup>3</sup> /sk	Mix Fluid Gal/sk	Rate bbl/min	Total Mix Fluid Gal/sk	

1	Fresh Water		20.00	bbl	8.33	.0	.0	.0	
2	VersaCem Lead	VERSACEM (TM) SYSTEM (452010)	210.0	sacks	12.3	2.38	13.75		13.75
	13.75 Gal	FRESH WATER							
3	VersaCem Tail	VERSACEM (TM) SYSTEM (452010)	160.0	sacks	12.8	2.11	11.75		11.75
	11.75 Gal	FRESH WATER							
4	Displacement Fluid		110.00	bbl	8.34	.0	.0	.0	
<b>Calculated Values</b>		<b>Pressures</b>			<b>Volumes</b>				
Displacement	110	Shut In: Instant		Lost Returns	0	Cement Slurry	149	Pad	
Top Of Cement	SURFACE	5 Min		Cement Returns	20	Actual Displacement	110	Treatment	
Frac Gradient		15 Min		Spacers	20	Load and Breakdown		Total Job	279
<b>Rates</b>									
Circulating	RIG	Mixing	8	Displacement	8/2	Avg. Job			8
Cement Left In Pipe	Amount	47.5 ft	Reason	Shoe Joint					
Frac Ring # 1 @	ID	Frac ring # 2 @	ID	Frac Ring # 3 @	ID	Frac Ring # 4 @	ID		
<b>The Information Stated Herein Is Correct</b>				Customer Representative Signature					

*The Road to Excellence Starts with Safety*

Sold To #: 300721	Ship To #: 2910795	Quote #:	Sales Order #: 9303642
Customer: WPX ENERGY ROCKY MOUNTAIN LLC-EBUS		Customer Rep: Shults, Mike	
Well Name: SG	Well #: 532-23	API/UWI #: 05-045-20837	
Field: GRAND VALLEY	City (SAP): PARACHUTE	County/Parish: Garfield	State: Colorado
<b>Legal Description:</b>			
Lat: N 39.427 deg. OR N 39 deg. 25 min. 38.269 secs.		Long: W 108.082 deg. OR W -109 deg. 55 min. 5.999 secs.	
Contractor: H&P 271		Rig/Platform Name/Num: H&P 271	
Job Purpose: Cement Surface Casing			Ticket Amount:
Well Type: Development Well		Job Type: Cement Surface Casing	
Sales Person: MAYO, MARK		Srvc Supervisor: MAGERS, MICHAEL	MBU ID Emp #: 339439

Activity Description	Date/Time	Cht #	Rate bbl/min	Volume bbl		Pressure psig		Comments
				Stage	Total	Tubing	Casing	
Call Out	03/03/2012 12:00							
Crew Leave Yard	03/03/2012 14:30							HES ALL PRESENT
Arrive At Loc	03/03/2012 22:30							PER JOHN TROUT COMPANY REP CALLED IN AND REQUES ED THAT ON TIME LOCATION BE CHANGED UNTIL 22:30 FROM 19:00/HES ARRIVED ON LOCATION
Assessment Of Location Safety Meeting	03/03/2012 23:00							COULD NOT START PONY MOTOR ON ELITE-CALLED IN FOR ANOTHER ELITE/ELITE ARRIVED AT 01:00
Pre-Rig Up Safety Meeting	03/03/2012 23:20							JSA ON RIGGING UP
Rig-Up Equipment	03/03/2012 23:30							1 PICKUP 1 ELITE 1 BULK TRUCK 1 BODYLOAD/RIGGED UP EQUIPMENT WAITING FOR ELITE TO ARRIVE/
Pre-Job Safety Meeting	03/04/2012 01:45							WITH ALL PERSONNEL ON LOCATION
Start Job	03/04/2012 02:08							TD-1465 TP-1442 SJ-47.5 CSG 9.625 32.3# OH-13 1/2" MW-10
Other	03/04/2012 02:09		2	2			75.0	FILL LINES
Activity Description	Date/Time	Cht	Rate bbl/min	Volume bbl		Pressure psig		Comments

Sold To # : 300721

Ship To # :2910795

Quote # :

Sales Order # : 9303642

SUMMIT Version: 7.3.0021

Sunday, March 04, 2012 03:37:00

		#		Stage	Total	Tubing	Casing	
Test Lines	03/04/2012 02:11		0.5	0.5			5210.0	PSI TEST OK
Pump Spacer 1	03/04/2012 02:15		3	20			63.0	FRESH WATER
Pump Lead Cement	03/04/2012 02:24		8	89			323.0	VERSACEM 210 SKS 12.3 PPG 2.38 FT3/SK 13.75 GAL/SK
Pump Tail Cement	03/04/2012 02:38		8	60			250.0	VERSACEM 160 SKS 12,8 PPG 2.11 FT3/SK 11.75 GAL/SK
Shutdown	03/04/2012 02:48							
Drop Top Plug	03/04/2012 02:52							PLUG LAUNCHED
Pump Displacement	03/04/2012 02:53		8	109.7			550.0	DISPLACED WITH MUD
Slow Rate	03/04/2012 03:08		2	100			235.0	SLOW RATE 10 BBLS PRIOR TO CALCULATED DISPLACEMENT
Bump Plug	03/04/2012 03:13		2	109.7			250.0	PLUG BUMPED/GOT 20 BBLS OF CEMENT TO SURFACE
Check Floats	03/04/2012 03:15			109.7			770.0	FLOATS HOLDING./GOT .5 BBL BACK USED 40 LBS OF SUGAR
End Job	03/04/2012 03:16							HAD GOOD CIRCULATION THROUGHOUT JOB/THANKS FOR USING HES AND THE CREW OF MIKE MAGERS

# HALLIBURTON

## Water Analysis Report

Company: WILLIAMS PRODUCTION

Date: 9/13/2011

Submitted by: JESSE SLAUGHTER

Date Rec.: \_\_\_\_\_

Attention: LAB

S.O.# 8407629

Lease RWF

Job Type: SURFACE

Well # 443-31

Specific Gravity	<i>MAX</i>	<b>1</b>
pH	<i>8</i>	<b>6</b>
Potassium (K)	<i>5000</i>	<b>250 Mg / L</b>
Calcium (Ca)	<i>500</i>	<b>120 Mg / L</b>
Iron (FE2)	<i>300</i>	<b>0 Mg / L</b>
Chlorides (Cl)	<i>3000</i>	<b>0 Mg / L</b>
Sulfates (SO <sub>4</sub> )	<i>1500</i>	<b>UNDER 200 Mg / L</b>
Chlorine (Cl <sub>2</sub> )		<b>0 Mg / L</b>
Temp	<i>40-80</i>	<b>55 Deg</b>
Total Dissolved Solids		<b>200 Mg / L</b>

Respectfully: JESSE SLAUGHTER

Title: CEMENTING SUPERVISOR

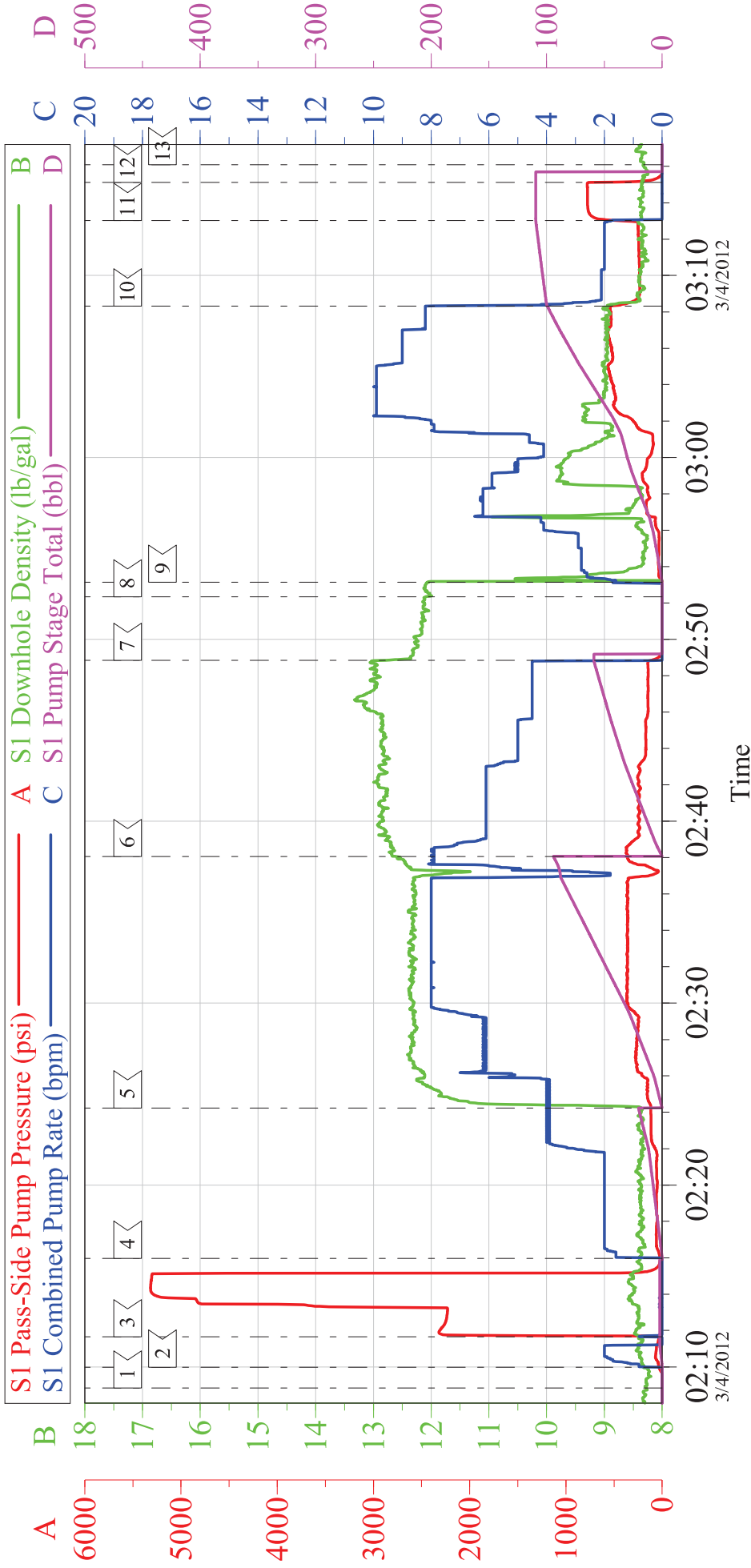
Location: Grand Junction, CO

NOTICE:

This report is limited to the described sample tested. Any person using or relying on this report agrees that Halliburton shall not be liable for any loss or damage whether due to act or omission resulting from such report c

# WPX H&P 271 SG 532-23

## 9.625 SURFACE



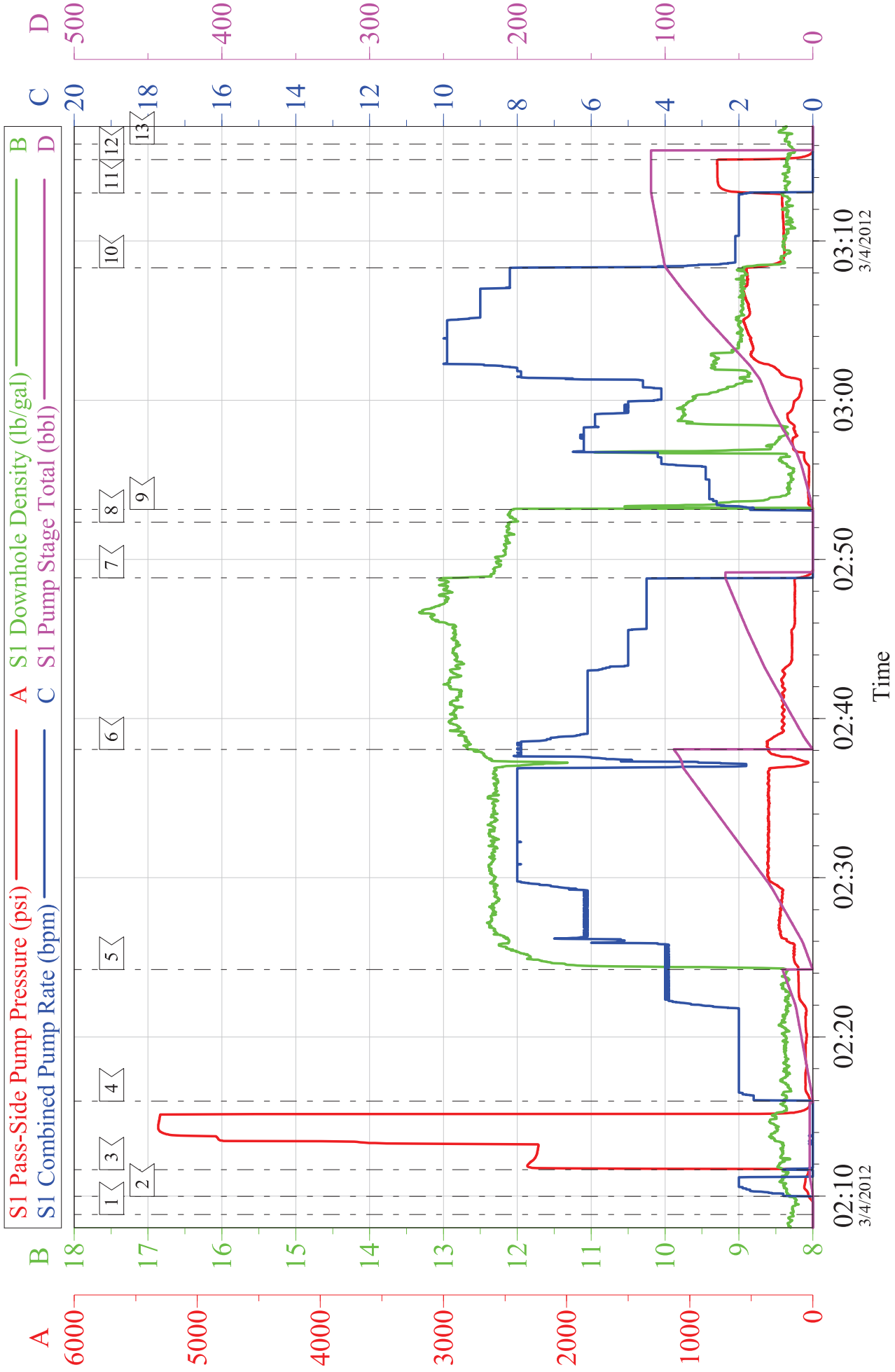
### Local Event Log

1	START JOB	02:08:50	2	FILL LINES	02:09:59	3	PRESSURE TEST	02:11:39
4	PUMP SPACER	02:15:58	5	PUMP LEAD CEMENT	02:24:14	6	PUMP TAIL CEMENT	02:38:03
7	SHUT DOWN	02:48:51	8	DROP PLUG	02:52:20	9	PUMP MUD DISPLACEMENT	02:53:08
10	SLOW RATE	03:08:19	11	BUMP PLUG	03:13:01	12	CHECK FLOATS	03:15:08
13	END JOB	03:16:05						

Customer:	WPX H&P 271	Job Date:	04-Mar-2012	Sales Order #:	9303642
Well Description:	SG 532-23	Job Type:	SURFACE	ADC Used:	YES
Customer Rep:	MIKE SCHULTZ	Cement Supervisor:	MIKE MAGERS	Elite # 1	JESSE JENSEN

# WPX H&P 271 SG 532-23

## 9.625 SURFACE



Customer: WPX H&P 271	Job Date: 04-Mar-2012	Sales Order #: 9303642
Well Description: SG 532-23	Job Type: SURFACE	ADC Used: YES
Customer Rep: MIKE SCHULTZ	Cement Supervisor: MIKE MAGERS	Elite # 1: JESSE JENSEN

<b>Sales Order #:</b> 9303642	<b>Line Item:</b> 10	<b>Survey Conducted Date:</b> 3/4/2012
<b>Customer:</b> WPX ENERGY ROCKY MOUNTAIN LLC-EBUS		<b>Job Type (BOM):</b> CMT SURFACE CASING BOM
<b>Customer Representative:</b> MIKE SCHULTZ		<b>API / UWI: (leave blank if unknown)</b> 05-045-20837
<b>Well Name:</b> SG		<b>Well Number:</b> 532-23
<b>Well Type:</b> Development Well	<b>Well Country:</b> United States of America	
<b>H2S Present:</b>	<b>Well State:</b> Colorado	<b>Well County:</b> Garfield

Dear Customer,

We hope that you were satisfied with the service quality of this job performed by Halliburton. It is the aim of our management and service personnel to deliver equipment and service of a standard unmatched in the service sector of the energy industry.

Please take the time to let us know if our performance met with your satisfaction. Please be as critical as possible to ensure we constantly improve our service. Your comments are of great value to us and are intended for the exclusive use of Halliburton.

### CUSTOMER SATISFACTION SURVEY

CATEGORY	CUSTOMER SATISFACTION RESPONSE	
Survey Conducted Date	The date the survey was conducted	3/4/2012
Survey Interviewer	The survey interviewer is the person who initiated the survey.	MICHAEL MAGERS (HX13672)
Customer Participation	Did the customer participate in this survey? (Y/N)	Yes
Customer Representative	Enter the Customer representative name	MIKE SCHULTZ
HSE	Was our HSE performance satisfactory? Circle Y or N	Yes
Equipment	Were you satisfied with our Equipment? Circle Y or N	Yes
Personnel	Were you satisfied with our people? Circle Y or N	Yes
Customer Comment	Customer's Comment	

<b>CUSTOMER SIGNATURE</b>
---------------------------

<b>Sales Order #:</b> 303642	<b>Line Item:</b> 10	<b>Survey Conducted Date:</b> 3/4/2012
<b>Customer:</b> WPX ENERGY ROCKY MOUNTAIN LLC-EBUS		<b>Job Type (BOM):</b> CMT SURFACE CASING BOM
<b>Customer Representative:</b> MIKE SCHULTZ		<b>API / UWI: (leave blank if unknown)</b> 05-045-20837
<b>Well Name:</b> SG		<b>Well Number:</b> 532-23
<b>Well Type:</b> Development Well	<b>Well Country:</b> United States of America	
<b>H2S Present:</b>	<b>Well State:</b> Colorado	<b>Well County:</b> Garfield

### KEY PERFORMANCE INDICATORS

General	
<b>Survey Conducted Date</b> The date the survey was conducted	3/4/2012

Cementing KPI Survey	
<b>Type of Job</b> Select the type of job: Cementing or Non-Cementing	0
<b>Select the Maximum Deviation range for this Job</b> What is the biggest deviation for the job you just completed? This may not be the maximum well deviation	Vertical
<b>Total Operating Time (hours)</b> Total Operating Hours Including Rig-up/Pumping/Rig-down. Enter in decimal format	3
<b>HSE Incident/Accident/Injury</b> HSE Incident/Accident/Injury. This should be recordable incidents only	No
<b>Was the job purpose achieved?</b> Was the job delivered correctly as per customer agreed design	Yes
<b>Operating Hours (Pumping Hours)</b> Total number of hours pumping fluid on this job. Enter in decimal format	1
<b>Customer Non-Productive Rig Time (hrs)</b> Lost time due to Halliburton in the start, execution or completion of an ordered service or product or delays in a follow-on service. Enter in decimal format: 0 if none	0
<b>Type of Rig Classification Job Was Performed</b> Type Of Rig Classification Job Was Performed On	Drilling Rig (Portable)
<b>Number Of JSAs Performed</b> Number Of Jsas Performed	4
<b>Number of Unplanned Shutdowns</b> Unplanned shutdown is when injection stops for an period of time	0
<b>Was this a Primary Cement Job (Yes / No)</b>	Yes

<b>Sales Order #:</b> 303642	<b>Line Item:</b> 10	<b>Survey Conducted Date:</b> 3/4/2012
<b>Customer:</b> WPX ENERGY ROCKY MOUNTAIN LLC-EBUS		<b>Job Type (BOM):</b> CMT SURFACE CASING BOM
<b>Customer Representative:</b> MIKE SCHULTZ		<b>API / UWI: (leave blank if unknown)</b> 05-045-20837
<b>Well Name:</b> SG		<b>Well Number:</b> 532-23
<b>Well Type:</b> Development Well	<b>Well Country:</b> United States of America	
<b>H2S Present:</b>	<b>Well State:</b> Colorado	<b>Well County:</b> Garfield

Primar <input type="checkbox"/> Cement Job <input type="checkbox"/> Casing Job <input type="checkbox"/> Liner Job <input type="checkbox"/> or Tie-back <input type="checkbox"/> Job <input type="checkbox"/>	
<b>Did We Run Wiper Plugs?</b>	Top
Did We Run Top And Bottom Casing Wiper Plugs <input type="checkbox"/>	
<b>Min Density of Job Stayed in Design Density Range (0-100)</b>	4
Density Range defined as +/- 20 ppg Calculation: Total BBLs cement mixed at designed density divided by total BBLs of cement multiplied by 100	
<b>Was Automated Density Control Used?</b>	Yes
Was Automated Density Control (ADC) Used <input type="checkbox"/>	
<b>Pump Rate (percent) of Job Stayed At Design Pump Rate</b>	3
Pump Rate range defined as +/- 1 bbl/min Calculation: Total BBLs of fluid pumped at the designed rate divided by Total BBLs of fluid pumped multiplied by 100	
<b>Nbr of Remedial Square Jobs Rqd - Competition</b>	0
Number Of Remedial Square Jobs Required After Primary Job Performed By Competition	
<b>Nbr of Remedial Plug Jobs Rqd - HES</b>	0
Number Of Remedial Plug Jobs Needed After Primary Plug Pumped By HES	
<b>Nbr of Remedial Square Jobs Rqd - HES</b>	0
Number Of Remedial Square Jobs Required After Primary Job Performed By HES	