

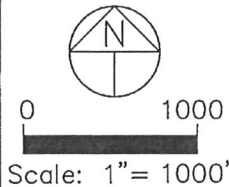
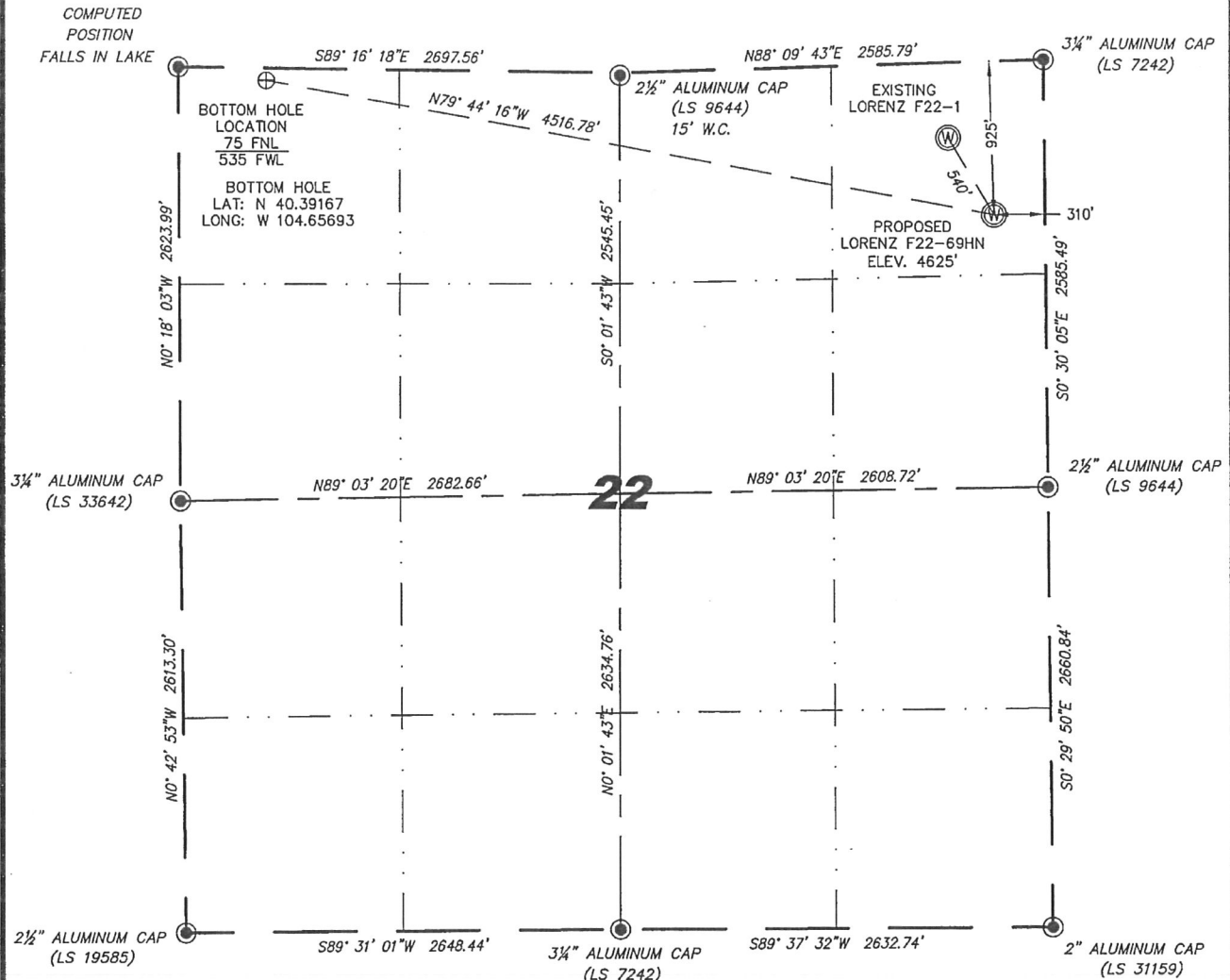
Steil Surveying Services, LLC

1102 West 19th Street P.O. BOX 2073

Cheyenne, Wyoming 82009

WELL LOCATION CERTIFICATE
THIS MAP DOES NOT REPRESENT A BOUNDARY SURVEY

SECTION 22
TOWNSHIP 5 NORTH
RANGE 65 WEST



IN ACCORDANCE WITH A REQUEST FROM RYAN HAWKINS - NOBLE ENERGY INC, STEIL SURVEYING SERVICES, LLC HAS DETERMINED THE LOCATION OF THE LORENZ F22-69HN WELL TO BE 925' FNL, 310' FEL, AS MEASURED AT NINETY (90) DEGREES FROM THE SECTION LINES, SECTION 22, TOWNSHIP 5 NORTH, RANGE 65 WEST, 6TH PRINCIPLE MERIDIAN, WELD COUNTY, COLORADO.

I HEREBY CERTIFY THAT THIS WELL LOCATION CERTIFICATE WAS PREPARED BY ME, OR UNDER MY DIRECT SUPERVISION, THAT THE FIELD WORK WAS COMPLETED ON 10/25/2011, FOR AND ON BEHALF OF NOBLE ENERGY INC, THAT IT IS NOT A LAND SURVEY PLAT OR AN IMPROVEMENT SURVEY PLAT, AND THAT IT IS NOT TO BE RELIED UPON FOR ESTABLISHMENT OF FENCE, BUILDING, OR OTHER FUTURE IMPROVEMENT LINES.

NOTES:

- 1) BASIS OF BEARINGS FOR THIS MAP ARE BASED UPON GPS OBSERVATIONS MADE ON 11/01/2011 BETWEEN MONUMENTS LOCATED AT THE SOUTHEAST SECTION CORNER AND THE NORTHEAST SECTION CORNER OF SAID SECTION AND WITH ALL BEARINGS SHOWN HEREON RELATIVE THERETO.
- 2) COORDINATES SHOWN ARE COLORADO STATE PLANE (NORTH ZONE) NAD 83.
- 3) ELEVATIONS ARE BASED UPON NGS OPUS SOLUTION NAVD 88 DATUM.
- 4) THE NEAREST EXISTING WELL IS: LORENZ F22-1, 540' NORTHWEST.
- 5) SEE LOCATION DRAWING FOR ALL IMPROVEMENTS WITHIN VISIBLE IMPROVEMENTS LIMIT.
- 6) THE LOCATION FALLS IN PASTURE LAND.

LATITUDE & LONGITUDE (NAD 83 SURFACE HOLE):

LATITUDE: N 40.38934°
LONGITUDE: W 104.64101°
PDOP: 2.5
QUARTER-QUARTER: NE/4NE/4
NEAREST PROPERTY LINE: 310' TO THE EAST

LEGEND

- FOUND SURVEY MONUMENT PER MONUMENT RECORD - EXCEPTIONS NOTED.
- (C) CALCULATED DIMENSION



NOTICE: According to Colorado law you MUST commence any legal action based upon any defect in this W.L.C. within three years after you first discover such defect. In no event may any action based upon any defect in this W.L.C. be commenced more than ten years from this sold date of the certification shown hereon.

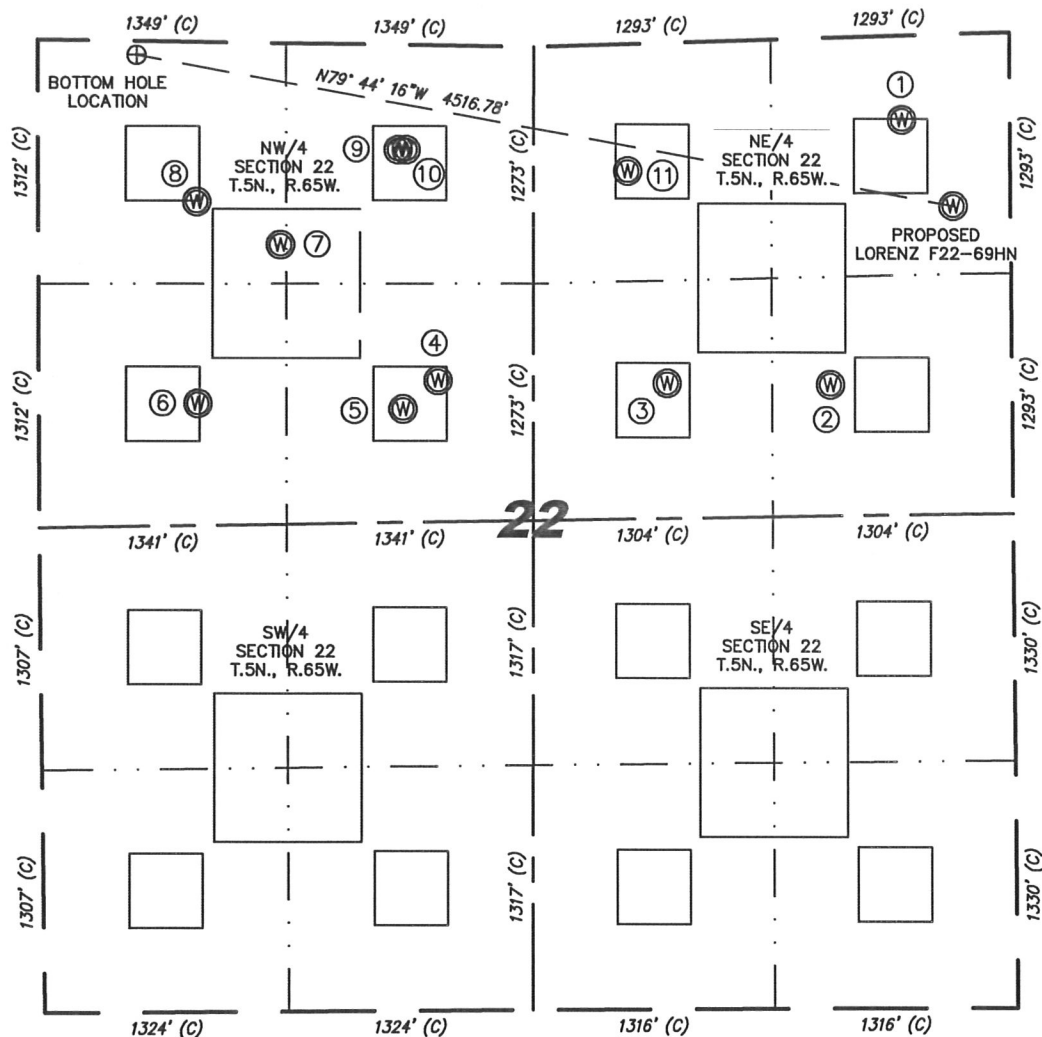
David C. Holmes
Professional Land Surveyor Registration No. 32828
State of Colorado

Completed 11/04/2011

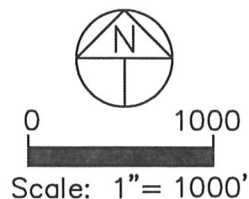
JOB #: 11086

SKETCH - LORENZ F22-69HN

SECTION 22
TOWNSHIP 5 NORTH
RANGE 65 WEST



- | | | | | | | | |
|--|---|--|--|--|---|--|--|
| ① LORENZ F22-1 NE/NE SEC. 22 453' FNL 584' FEL EL 4624' N 40.39062 W 104.64199 PDOP 2.8 | ② UNIOIL RIVER NO. 1 SE/NE SEC. 22 1864' FNL 984' FEL EL 4636' N 40.38672 W 104.64343 PDOP 2.1 | ③ LORENZ FARMS 22-13 SW/NE SEC. 22 1829' FNL 1871' FEL EL 4626' N 40.38676 W 104.64661 PDOP 2.3 | ④ LORENZ FARMS 22-6B SE/NW SEC. 22 1800' FNL 2169' FWL EL 4627' N 40.38683 W 104.65109 PDOP 2.8 | ⑤ LORENZ FARMS 22-6B SE/NW SEC. 22 1956' FNL 1977' FWL (RECORD LOCATION) (ABANDONED LOCATION) | ⑥ LORENZ FARMS 22-5B SW/NW SEC. 22 1942' FNL 862' FWL EL 4628' N 40.38652 W 104.65579 PDOP 1.8 | ⑦ LORENZ F22-19 NW/NW SEC. 22 1082' FNL 1315' FWL EL 4628' N 40.38886 W 104.65415 PDOP 2.1 | |
| ⑧ LORENZ FARMS 22-4B NW/NW SEC. 22 858' FNL 860' FWL (RECORD LOCATION) (ABANDONED LOCATION) | ⑨ LORENZ FARMS 22-4B NE/NW SEC. 22 563' FNL 1958' FEL EL 4626' N 40.39024 W 104.65183 PDOP 2.1 | ⑩ LORENZ FARMS 22-3B NE/NW SEC. 22 563' FNL 2000' FEL EL 4627' N 40.39024 W 104.65168 PDOP 2.1 | ⑪ LORENZ F22-2 NW/NE SEC. 22 683' FNL 2078' FEL EL 4625' N 40.38990 W 104.64735 PDOP 2.2 | | | | |



NOTES:

- 1) THIS SKETCH DOES NOT REPRESENT A BOUNDARY SURVEY.
- 2) THE DATUM FOR THE LATITUDES AND LONGITUDES ON THIS SKETCH IS NAD83.