

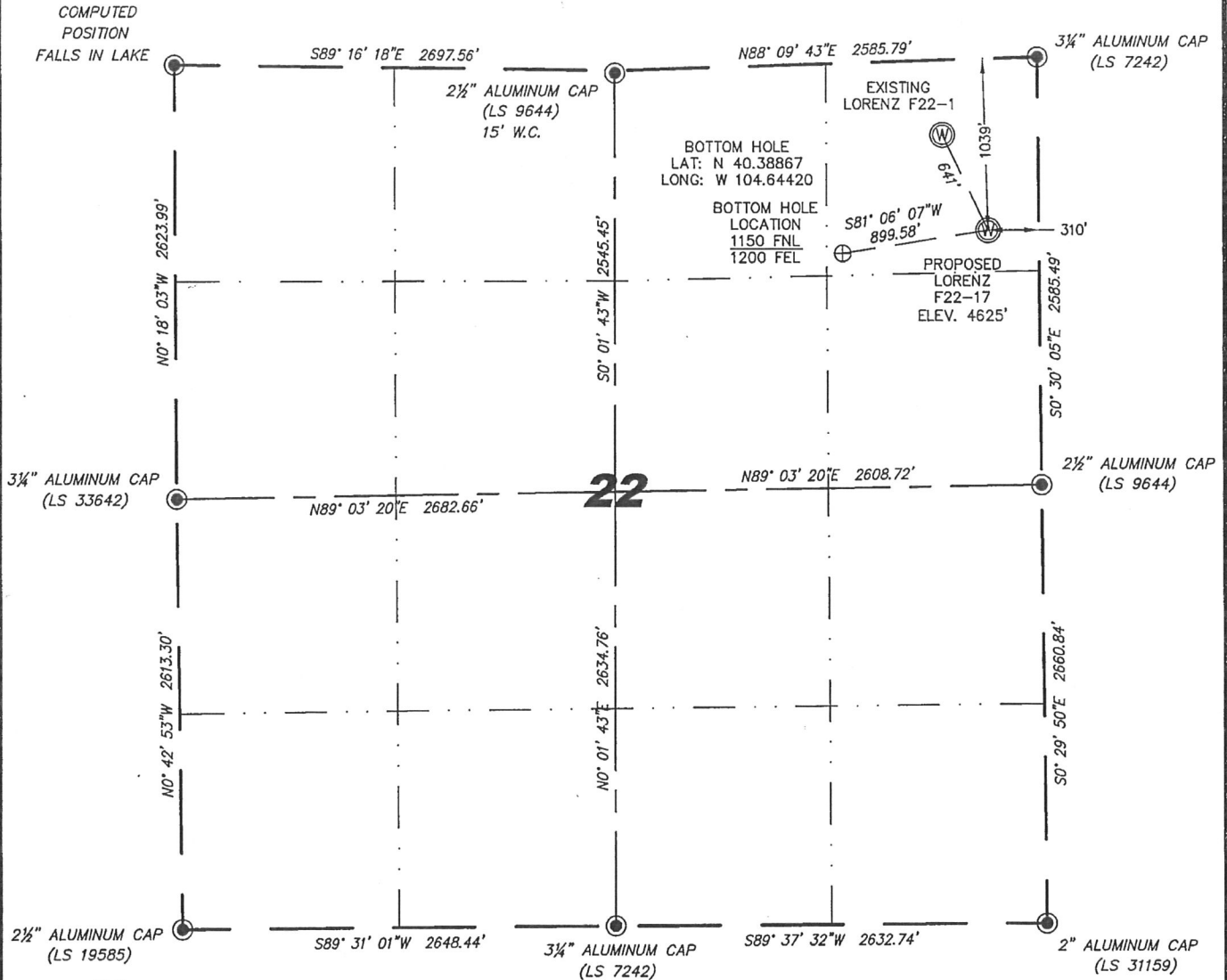
Steil Surveying Services, LLC

1102 West 19th Street P.O. BOX 2073

Cheyenne, Wyoming 82009

WELL LOCATION CERTIFICATE  
THIS MAP DOES NOT REPRESENT A BOUNDARY SURVEY

SECTION 22  
TOWNSHIP 5 NORTH  
RANGE 65 WEST



0 1000

Scale: 1" = 1000'

IN ACCORDANCE WITH A REQUEST FROM RYAN HAWKINS - NOBLE ENERGY INC, STEIL SURVEYING SERVICES, LLC HAS DETERMINED THE LOCATION OF THE LORENZ F22-17 WELL TO BE 1039' FNL, 310' FEL, AS MEASURED AT NINETY (90) DEGREES FROM THE SECTION LINES, SECTION 22, TOWNSHIP 5 NORTH, RANGE 65 WEST, 6TH PRINCIPLE MERIDIAN, WELD COUNTY, COLORADO.

I HEREBY CERTIFY THAT THIS WELL LOCATION CERTIFICATE WAS PREPARED BY ME, OR UNDER MY DIRECT SUPERVISION, THAT THE FIELD WORK WAS COMPLETED ON 10/25/2011, FOR AND ON BEHALF OF NOBLE ENERGY INC, THAT IT IS NOT A LAND SURVEY PLAT OR AN IMPROVEMENT SURVEY PLAT, AND THAT IT IS NOT TO BE RELIED UPON FOR ESTABLISHMENT OF FENCE, BUILDING, OR OTHER FUTURE IMPROVEMENT LINES.

NOTES:

- 1) BASIS OF BEARINGS FOR THIS MAP ARE BASED UPON GPS OBSERVATIONS MADE ON 11/01/2011 BETWEEN MONUMENTS LOCATED AT THE SOUTHEAST SECTION CORNER AND THE NORTHEAST SECTION CORNER OF SAID SECTION AND WITH ALL BEARINGS SHOWN HEREON RELATIVE THERETO.
- 2) COORDINATES SHOWN ARE COLORADO STATE PLANE (NORTH ZONE) NAD 83.
- 3) ELEVATIONS ARE BASED UPON NGS OPUS SOLUTION NAVD 88 DATUM.
- 4) THE NEAREST EXISTING WELL IS: LORENZ F22-1, 641' NORTHWEST.
- 5) SEE LOCATION DRAWING FOR ALL IMPROVEMENTS WITHIN VISIBLE IMPROVEMENTS LIMIT.
- 6) THE LOCATION FALLS IN PASTURE LAND.

LATITUDE & LONGITUDE (NAD 83 SURFACE HOLE)  
LATITUDE: N 40.38903°  
LONGITUDE: W 104.64101°  
PDOP: 2.1  
QUARTER-QUARTER: NE/4NE/4  
NEAREST PROPERTY LINE: 310' TO THE EAST

LEGEND

- FOUND SURVEY MONUMENT PER MONUMENT RECORD - EXCEPTIONS NOTED.
- (C) CALCULATED DIMENSION



Completed 11/04/2011

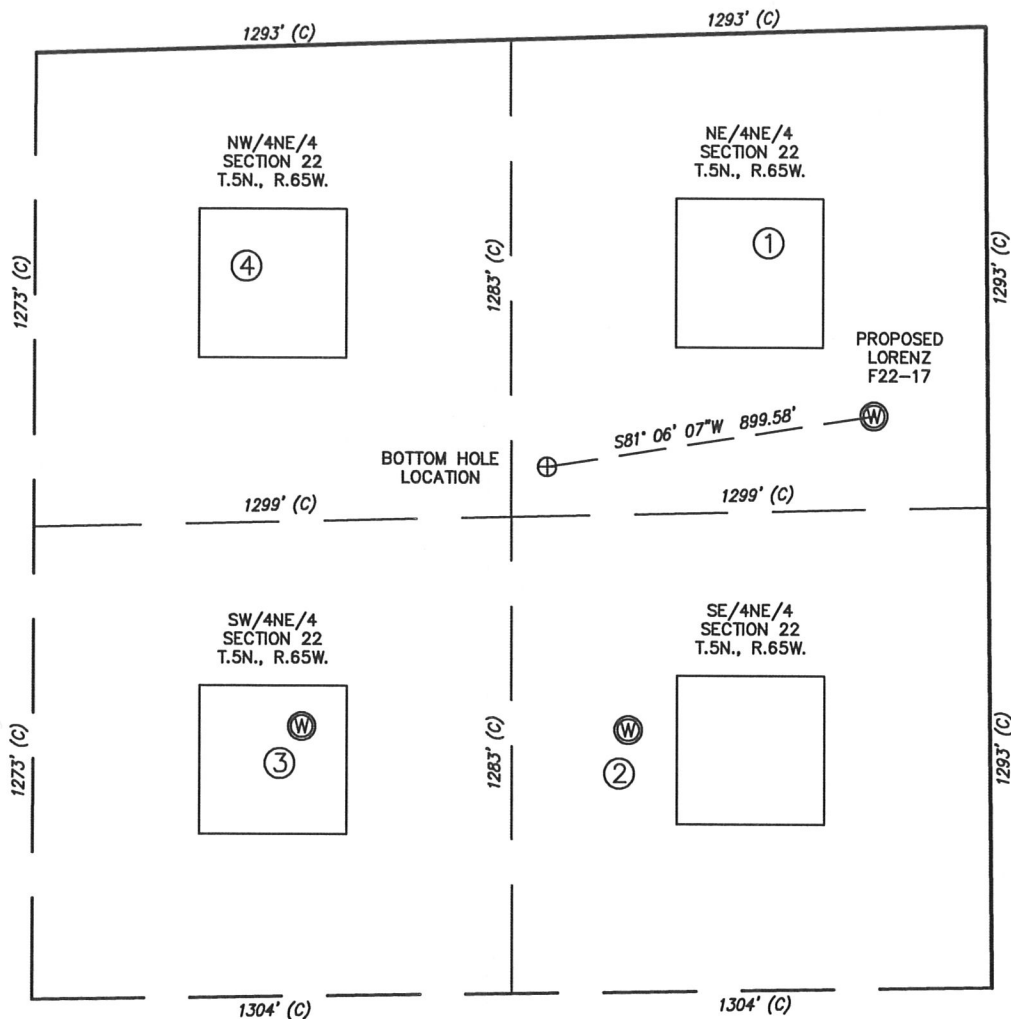
David C. Holmes  
Professional Land Surveyor Registration No. 32828  
State of Colorado

JOB #: 11086

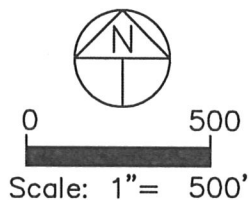
NOTICE: According to Colorado law you MUST commence any legal action based upon any defect in this W.L.C. within three years after you first discover such defect. In no event may any action based upon any defect in this W.L.C. be commenced more than ten years from this sold date of the certification shown hereon.

# SKETCH — LORENZ F22-17

SECTION 22  
TOWNSHIP 5 NORTH  
RANGE 65 WEST



①	②	③	④
LORENZ F22-1	UNIOIL RIVER	LORENZ FARMS	LORENZ F22-2
NE/NE SEC. 22	NO. 1	22-13	NW/NE SEC. 22
453' FNL	SE/NE SEC. 22	SW/NE SEC. 22	683' FNL
584' FEL	1864' FNL	1829' FNL	2078' FEL
EL 4624'	984' FEL	1871' FEL	EL 4625'
N 40.39062	EL 4636'	EL 4626'	N 40.38990
W 104.64199	N 40.38672	N 40.38676	W 104.64735
PDOP 2.8	W 104.64343	W 104.64661	PDOP 2.2
	PDOP 2.1	PDOP 2.3	



## NOTES:

- 1) THIS SKETCH DOES NOT REPRESENT A BOUNDARY SURVEY.
- 2) THE DATUM FOR THE LATITUDES AND LONGITUDES ON THIS SKETCH IS NAD83.