

---

**WPX ENERGY ROCKY MOUNTAIN**

---

SG 432-23

Osage County , Oklahoma

**Cement Surface Casing**

03-Feb-2012

**Post Job Report**

*The Road to Excellence Starts with Safety*

<b>Sold To #:</b> 300721	<b>Ship To #:</b> 2507886	<b>Quote #:</b>	<b>Sales Order #:</b> 9229264
<b>Customer:</b> WPX ENERGY ROCKY MOUNTAIN LLC-EBUS		<b>Customer Rep:</b> Towers, Ron	
<b>Well Name:</b> SG		<b>Well #:</b> 432-23	<b>API/UWI #:</b> 05-045-20829
<b>Field:</b>	<b>City (SAP):</b> TULSA	<b>County/Parish:</b> Osage	<b>State:</b> Oklahoma
<b>Lat:</b> N 39.427 deg. OR N 39 deg. 25 min. 38.046 secs.		<b>Long:</b> E 108.082 deg. OR E 108 deg. 4 min. 53.99 secs.	
<b>Contractor:</b> H&P 271		<b>Rig/Platform Name/Num:</b> H&P 271	
<b>Job Purpose:</b> Cement Surface Casing			
<b>Well Type:</b> Development Well		<b>Job Type:</b> Cement Surface Casing	
<b>Sales Person:</b> SCOTT, KYLE		<b>Srvc Supervisor:</b> NICKLE, RYON	<b>MBU ID Emp #:</b> 454759

**Job Personnel**

HES Emp Name	Exp Hrs	Emp #	HES Emp Name	Exp Hrs	Emp #	HES Emp Name	Exp Hrs	Emp #
BANKS, BRENT A	12.5	371353	CARTER, ERIC Earl	12.5	345598	NICKLE, RYON	12.5	454759
ROSE, BENJAMIN Keith	12.5	487022						

**Equipment**

HES Unit #	Distance-1 way	HES Unit #	Distance-1 way	HES Unit #	Distance-1 way	HES Unit #	Distance-1 way
10248065	60 mile	10784080	60 mile	10804579	60 mile	10871245	60 mile
11259885	60 mile	11360881	60 mile				

**Job Hours**

Date	On Location Hours	Operating Hours	Date	On Location Hours	Operating Hours	Date	On Location Hours	Operating Hours
2/2/2012	3	0	2/3/2012	9.5	2.5			

**TOTAL** Total is the sum of each column separately

**Job**

**Job Times**

Formation Name	Top	Bottom	Called Out	Date	Time	Time Zone
Formation Depth (MD)	0	1400	On Location	02 - Feb - 2012	17:30	MST
Form Type	BHST		On Location	02 - Feb - 2012	21:00	MST
Job depth MD	1400. ft	Job Depth TVD	1400. ft	Job Started	03 - Feb - 2012	05:54
Water Depth		Wk Ht Above Floor	4. ft	Job Completed	03 - Feb - 2012	07:13
Perforation Depth (MD)	From	To	Departed Loc	03 - Feb - 2012	09:30	MST

**Well Data**

Description	New / Used	Max pressure psig	Size in	ID in	Weight lbm/ft	Thread	Grade	Top MD ft	Bottom MD ft	Top TVD ft	Bottom TVD ft
OPEN HOLE				13.5					1400.		1400.
SURFACE CASING	Unknown		9.625	9.001	32.3		H-40		1384.		1384.

**Sales/Rental/3<sup>rd</sup> Party (HES)**

Description	Qty	Qty uom	Depth	Supplier
PLUG,CMTG, TOP,9 5/8,HWE,8.16 MIN/9.06 MA	1	EA		

**Tools and Accessories**

Type	Size	Qty	Make	Depth	Type	Size	Qty	Make	Depth	Type	Size	Qty	Make
Guide Shoe					Packer					Top Plug	9.625"	1	HES
Float Shoe					Bridge Plug					Bottom Plug			
Float Collar					Retainer					SSR plug set			
Insert Float										Plug Container	9.625"	1	HES
Stage Tool										Centralizers		8	

**Miscellaneous Materials**

Gelling Agt	Conc	Surfactant	Conc	Acid Type	Qty	Conc %
Treatment Fld	Conc	Inhibitor	Conc	Sand Type	Size	Qty

**Fluid Data**

Stage/Plug #: 1

Fluid #	Stage Type	Fluid Name	Qty	Qty uom	Mixing Density lbm/gal	Yield ft <sup>3</sup> /sk	Mix Fluid Gal/sk	Rate bbl/min	Total Mix Fluid Gal/sk
1	Fresh Water		20.00	bbl	8.33	.0	.0	4	
2	Lead Cement	VERSACEM (TM) SYSTEM (452010)	200.0	sacks	12.3	2.38	13.75	8	13.75
	13.75 Gal	FRESH WATER							
3	Tail Cement	VERSACEM (TM) SYSTEM (452010)	160.0	sacks	12.8	2.11	11.75	8	11.75
	11.75 Gal	FRESH WATER							
4	Displacement Fluid		105.00	bbl	8.34	.0	.0	5.5	
Calculated Values		Pressures		Volumes					
Displacement	105.3	Shut In: Instant		Lost Returns	0	Cement Slurry	144.89	Pad	
Top Of Cement	SURFACE	5 Min		Cement Returns	28	Actual Displacement	105.3	Treatment	
Frac Gradient		15 Min		Spacers	20	Load and Breakdown		Total Job	282.29
Rates									
Circulating	RIG	Mixing	7	Displacement	4	Avg. Job	5.5		
Cement Left In Pipe	Amount	46 ft	Reason	Shoe Joint					
Frac Ring # 1 @	ID	Frac ring # 2 @	ID	Frac Ring # 3 @	ID	Frac Ring # 4 @	ID		
The Information Stated Herein Is Correct				Customer Representative Signature					

*The Road to Excellence Starts with Safety*

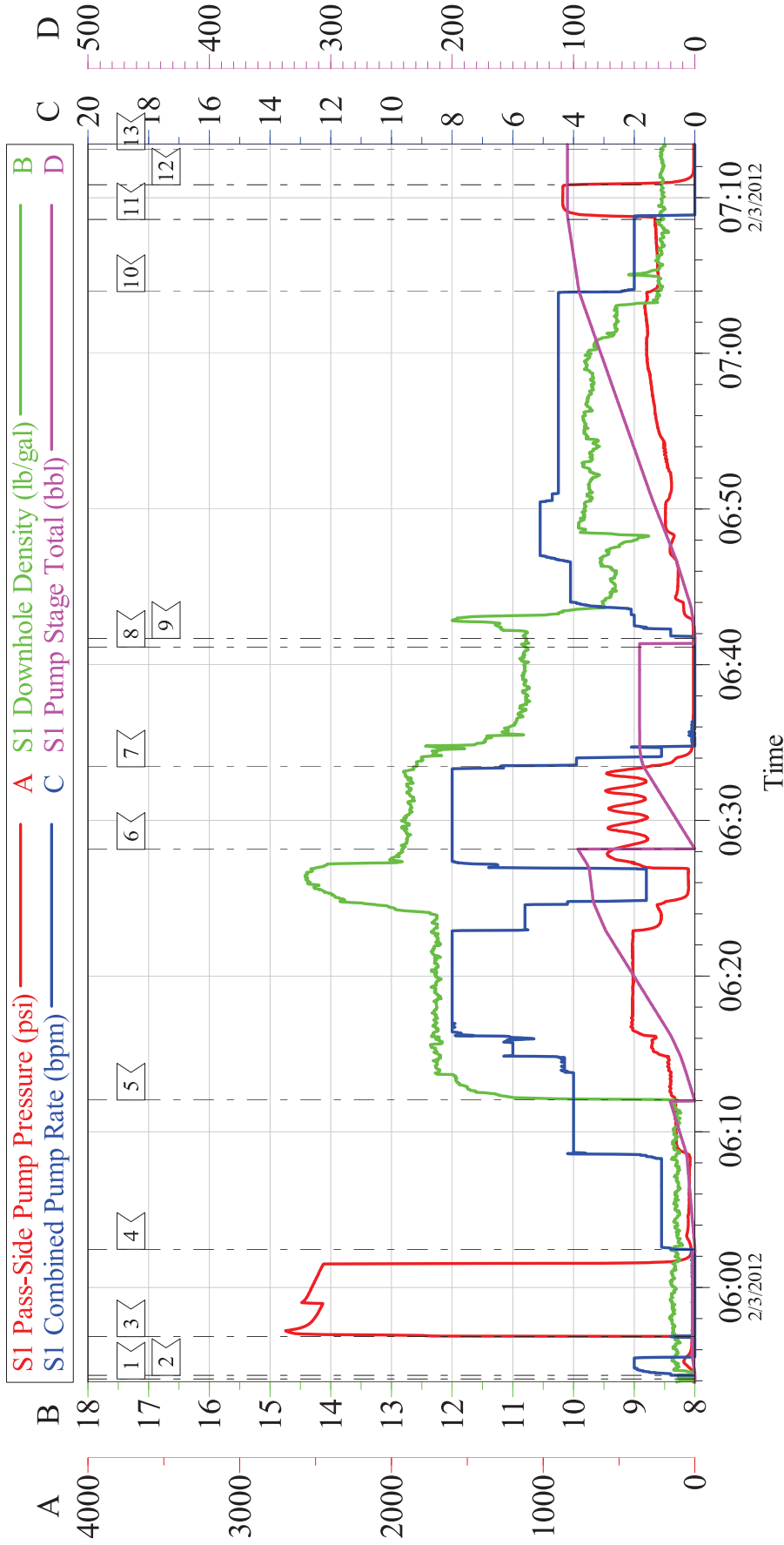
<b>Sold To #:</b> 300721	<b>Ship To #:</b> 2507886	<b>Quote #:</b>	<b>Sales Order #:</b> 9229264
<b>Customer:</b> WPX ENERGY ROCKY MOUNTAIN LLC-EBUS		<b>Customer Rep:</b> Towers, Ron	
<b>Well Name:</b> SG	<b>Well #:</b> 432-23	<b>API/UWI #:</b> 05-045-20829	
<b>Field:</b>	<b>City (SAP):</b> TULSA	<b>County/Parish:</b> Osage	<b>State:</b> Oklahoma
<b>Legal Description:</b>			
<b>Lat:</b> N 39.427 deg. OR N 39 deg. 25 min. 38.046 secs.		<b>Long:</b> E 108.082 deg. OR E 108 deg. 4 min. 53.99 secs.	
<b>Contractor:</b> H&P 271		<b>Rig/Platform Name/Num:</b> H&P 271	
<b>Job Purpose:</b> Cement Surface Casing			<b>Ticket Amount:</b>
<b>Well Type:</b> Development Well		<b>Job Type:</b> Cement Surface Casing	
<b>Sales Person:</b> SCOTT, KYLE		<b>Srvc Supervisor:</b> NICKLE, RYON	<b>MBU ID Emp #:</b> 454759

Activity Description	Date/Time	Cht #	Rate bbl/min	Volume bbl		Pressure psig		Comments
				Stage	Total	Tubing	Casing	
Call Out	02/02/2012 17:30							HES CEMENT CREW
Pre-Convoy Safety Meeting	02/02/2012 19:45							ALL HES CEMENT CREW
Crew Leave Yard	02/02/2012 20:00							
Arrive At Loc	02/02/2012 21:00							RIG RIGGING UP CASING CREW, TIGHT LOCATION PULLED EQUIPMENT ON LOCATION AND OFF TO SIDE TO STAY OUT OF THE WAY OF CURRENT OPERATIONS
Assessment Of Location Safety Meeting	02/02/2012 21:05							ALL HES CEMENT CREW
Other	02/03/2012 02:00							SPOT EQUIPMENT; 1 CEMENTERS F 550, 1 ELITE PUMPING UNIT, 1 660 BULK TRANSPORT, 1 400 BULK TRANSPORT
Pre-Rig Up Safety Meeting	02/03/2012 02:15							ALL HES CEMENT CREW
Pre-Job Safety Meeting	02/03/2012 05:20							ALL HES CEMENT CREW, RIG CREW, COMPANY REP, AVAILABLE 3RD PARTY EE'S
Activity Description	Date/Time	Cht #	Rate bbl/min	Volume bbl		Pressure psig		Comments
				Stage	Total	Tubing	Casing	

Start Job	02/03/2012 05:54							TD- 1400' TP- 1384' SHOE- 46' OH- 13.5" SURFACE CASING- 9.625" 32.3#/FT H-40 CENTRALIZERS- 8 MUD- 9.9 PPG YP- 26 PV- 28
Other	02/03/2012 05:54		2	2			70.0	FILL LINES, FRESH WATER
Pressure Test	02/03/2012 05:56							PRESSURE UP TO 2528 PSI HELD FOR 2 MIN, PRESSURE DROP TO 2458 PSI
Pump Spacer 1	02/03/2012 06:02		2	20			131.0	FRESH WATER
Pump Lead Cement	02/03/2012 06:12		8	84.77			550.0	200 SKS; 12.3 PPG, 2.38 FT3/SK, 13.75 GAL/SK
Pump Tail Cement	02/03/2012 06:28		8	60.12			568.0	160 SKS; 12.8 PPG, 2.11 FT3/SK, 11.75 GAL/SK
Shutdown	02/03/2012 06:33							
Drop Top Plug	02/03/2012 06:41							CO REP VERIFIED PLUG LAUNCHED
Pump Displacement	02/03/2012 06:41		10	95.3			331.0	DRILLING MUD; 9.9# FROM VAC TRUCK, LAST 30 BBLs WERE WITH FRESH WATER
Slow Rate	02/03/2012 07:03		2	10			256.0	
Bump Plug	02/03/2012 07:08						821.0	
Check Floats	02/03/2012 07:10							FLOATS HELD, RETURNED 3/4 BBLs H2O
End Job	02/03/2012 07:13							PIPE WAS RECIPROCATED, GOOD RETURNS THROUGHOUT, 28 BBLs CEMENT TO SURFACE
Post-Job Safety Meeting (Pre Rig-Down)	02/03/2012 07:15							ALL HES CEMENT CREW
Pre-Convoy Safety Meeting	02/03/2012 09:15							ALL HES CEMENT CREW
Crew Leave Location	02/03/2012 09:30							THANK YOU FOR USING HALLIBURTON CEMENTING, RYON NICKLE AND CREW

# WPX ENERGY - SG 432-23

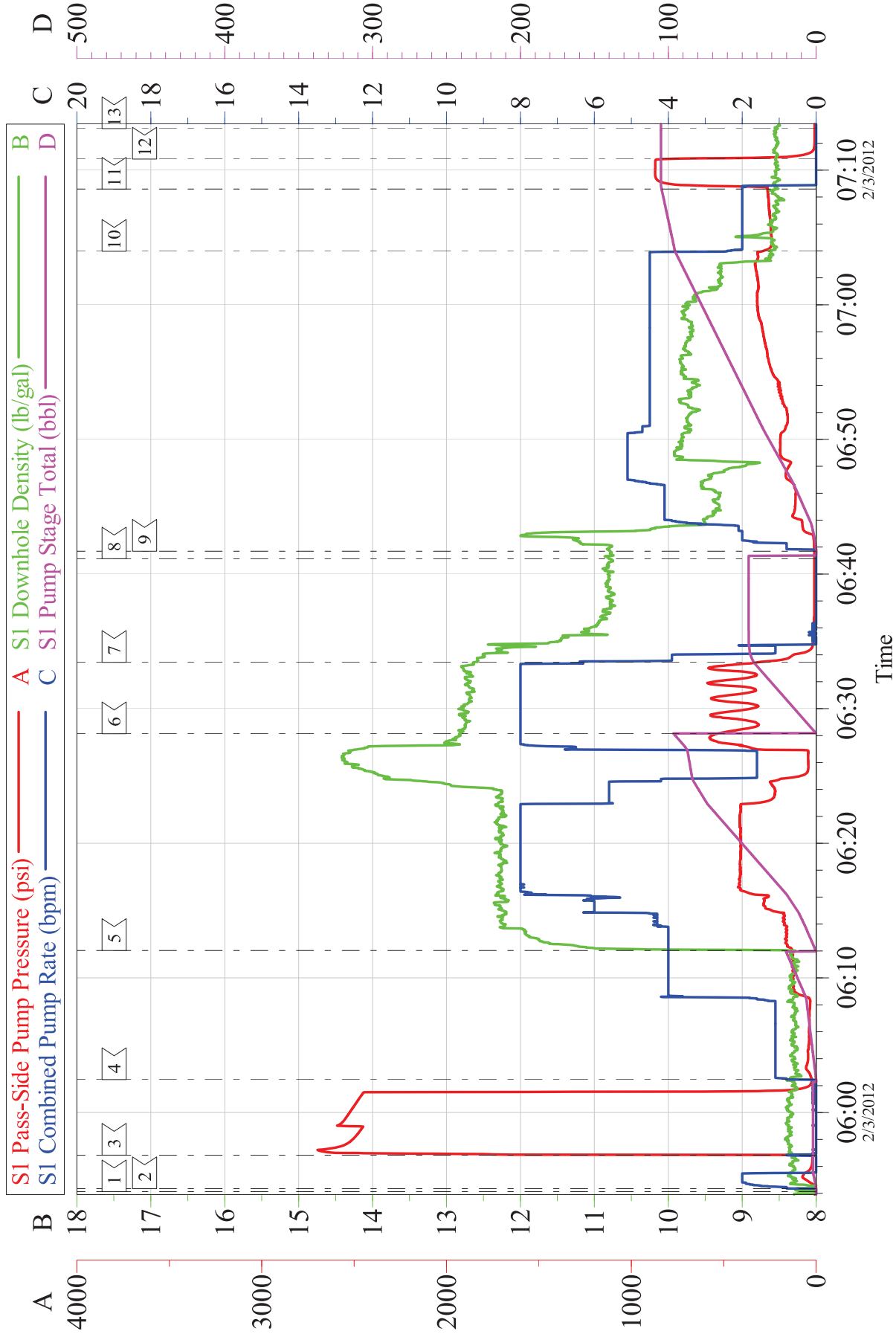
SURFACE



Customer:	WPX ENERGY ROCKY MOUNTAIN LLC-EBUS	Job Date:	03-Feb-2012	Sales Order #:	9229264
Well Description:	SG 432-23	Job Type:	SURFACE	ADC Used:	YES
Company Rep:	MIKE SCHULTZ	Cement Supervisor:	RYON NICKLE	Elite # / Operator:	ES / BEN ROSE

# WPX ENERGY - SG 432-23

## SURFACE



Customer:	WPX ENERGY ROCKY MOUNTAIN LLC-EBUS	Job Date:	03-Feb-2012	Sales Order #:	9229264
Well Description:	SG 432-23	Job Type:	SURFACE	ADC Used:	YES
Company Rep:	MIKE SCHULTZ	Cement Supervisor:	RYON NICKLE	Elite # / Operator:	E8 / BEN ROSE

# HALLIBURTON

---

## Water Analysis Report

Company: WILLIAMS

Date: 2/2/2012

Submitted by: RYON NICKLE

Date Rec.: 2/2/2012

Attention: LAB

S.O.# 9229264

Lease H&P 271

Job Type: SURFACE

Well # SG 432-23

Specific Gravity	<i>MAX</i>	<b>1</b>
pH	<i>8</i>	<b>7</b>
Potassium (K)	<i>5000</i>	<b>0 Mg / L</b>
Hrdness	<i>500</i>	<b>180 Mg / L</b>
Iron (FE2)	<i>300</i>	<b>0 Mg / L</b>
Chlorides (Cl)	<i>3000</i>	<b>250 Mg / L</b>
Sulfates (SO <sub>4</sub> )	<i>1500</i>	<b>&lt;200 Mg / L</b>
Temp	<i>40-80</i>	<b>38 Deg</b>
Total Dissolved Solids		<b>760 Mg / L</b>

Respectfully: RYON NICKLE

Title: CEMENTING SUPERVISOR

Location: Grand Junction, CO

NOTICE:

This report is limited to the described sample tested. Any person using or relying on this report agrees that Halliburton shall not be liable for any loss or damage whether due to act or omission resulting from such report or it

<b>Sales Order #:</b> 9229264	<b>Line Item:</b> 10	<b>Survey Conducted Date:</b> 2/3/2012
<b>Customer:</b> WPX ENERGY ROCKY MOUNTAIN LLC-EBUS		<b>Job Type (BOM):</b> CMT SURFACE CASING BOM
<b>Customer Representative:</b> MIKE SCHULTZ		<b>API / UWI: (leave blank if unknown)</b> 05-045-20829
<b>Well Name:</b> SG		<b>Well Number:</b> 432-23
<b>Well Type:</b> Development Well	<b>Well Country:</b> United States of America	
<b>H2S Present:</b>	<b>Well State:</b> Oklahoma	<b>Well County:</b> Osage

Dear Customer,

We hope that you were satisfied with the service quality of this job performed by Halliburton. It is the aim of our management and service personnel to deliver equipment and service of a standard unmatched in the service sector of the energy industry.

Please take the time to let us know if our performance met with your satisfaction. Please be as critical as possible to ensure we constantly improve our service. Your comments are of great value to us and are intended for the exclusive use of Halliburton.

### CUSTOMER SATISFACTION SURVEY

CATEGORY	CUSTOMER SATISFACTION RESPONSE	
Survey Conducted Date	The date the survey was conducted	2/3/2012
Survey Interviewer	The survey interviewer is the person who initiated the survey.	RYON NICKLE (HB22175)
Customer Participation	Did the customer participate in this survey? (Y/N)	Yes
Customer Representative	Enter the Customer representative name	MIKE SCHULTZ
HSE	Was our HSE performance satisfactory? Circle Y or N	Yes
Equipment	Were you satisfied with our Equipment? Circle Y or N	Yes
Personnel	Were you satisfied with our people? Circle Y or N	Yes
Customer Comment	Customer's Comment	

<b>CUSTOMER SIGNATURE</b>
---------------------------

<b>Sales Order #:</b> 9229264	<b>Line Item:</b> 10	<b>Survey Conducted Date:</b> 2/3/2012
<b>Customer:</b> WPX ENERGY ROCKY MOUNTAIN LLC-EBUS		<b>Job Type (BOM):</b> CMT SURFACE CASING BOM
<b>Customer Representative:</b> MIKE SCHULTZ		<b>API / UWI: (leave blank if unknown)</b> 05-045-20829
<b>Well Name:</b> SG		<b>Well Number:</b> 432-23
<b>Well Type:</b> Development Well	<b>Well Country:</b> United States of America	
<b>H2S Present:</b>	<b>Well State:</b> Oklahoma	<b>Well County:</b> Osage

### KEY PERFORMANCE INDICATORS

General	
<b>Survey Conducted Date</b> The date the survey was conducted	2/3/2012

Cementing KPI Survey	
<b>Type of Job</b> Select the type of job: Cementing or Non-Cementing	0
<b>Select the Maximum Deviation Range for this Job</b> What is the highest deviation for the job you just completed? This may not be the maximum well deviation	Vertical
<b>Total Operating Time (hours)</b> Total Operating Hours Including Rig-up/Pumping/Rig-down. Enter in decimal format	4
<b>HSE Incident/Accident/Injury</b> HSE Incident/Accident/Injury. This should be recordable incidents only	No
<b>Was the job purpose achieved?</b> Was the job delivered correctly as per customer agreed design	Yes
<b>Operating Hours (Pumping Hours)</b> Total number of hours pumping fluid on this job. Enter in decimal format	2.5
<b>Customer Non-Productive Rig Time (hrs)</b> Lost time due to Halliburton in the start, execution or completion of an ordered service or product or delays in a follow-on service. Enter in decimal format. 0 if none	0
<b>Type of Rig Classification Job Was Performed</b> Type Of Rig Classification Job Was Performed On	Drilling Rig (Portable)
<b>Number Of JSAs Performed</b> Number Of Jsas Performed	5
<b>Number of Unplanned Shutdowns</b> Unplanned shutdown is when injection stops for an period of time	0
<b>Was this a Primary Cement Job (Yes / No)</b>	Yes

<b>Sales Order #:</b> 9229264	<b>Line Item:</b> 10	<b>Survey Conducted Date:</b> 2/3/2012
<b>Customer:</b> WPX ENERGY ROCKY MOUNTAIN LLC-EBUS		<b>Job Type (BOM):</b> CMT SURFACE CASING BOM
<b>Customer Representative:</b> MIKE SCHULTZ		<b>API / UWI: (leave blank if unknown)</b> 05-045-20829
<b>Well Name:</b> SG		<b>Well Number:</b> 432-23
<b>Well Type:</b> Development Well	<b>Well Country:</b> United States of America	
<b>H2S Present:</b>	<b>Well State:</b> Oklahoma	<b>Well County:</b> Osage

Primar <input type="checkbox"/> Cement Job <input type="checkbox"/> Casing Job <input type="checkbox"/> Liner Job <input type="checkbox"/> or Tie-back Job <input type="checkbox"/>	
<b>Did We Run Wiper Plugs?</b>	Top
Did We Run Top And Bottom Casing Wiper Plugs <input type="checkbox"/>	
<b>Min Density of Job Stayed in Design Density Range (0-100)</b>	85
Density Range defined as +/- 20 ppg Calculation: Total BBLs cement mixed at designed density divided by total BBLs of cement multiplied by 100	
<b>Was Automated Density Control Used?</b>	Yes
Was Automated Density Control (ADC) Used <input type="checkbox"/>	
<b>Pump Rate (percent) of Job Stayed At Design Pump Rate</b>	90
Pump Rate range defined as +/- 1 bbl/min Calculation: Total BBLs of fluid pumped at the designed rate divided by Total BBLs of fluid pumped multiplied by 100	
<b>Nbr of Remedial Square Jobs Required After Primary Job Performed Because of Competition</b>	0
Number Of Remedial Square Jobs Required After Primary Job Performed Because of Competition	
<b>Nbr of Remedial Plug Jobs Required Because of HES</b>	0
Number Of Remedial Plug Jobs Needed After Primary Job Performed Because of HES	
<b>Nbr of Remedial Square Jobs Required Because of HES</b>	0
Number Of Remedial Square Jobs Required After Primary Job Performed Because of HES	