

BONANZA CREEK ENERGY OPERATING

Well Name: **PRONGHORN 11-14-12HZ**

Surface Location: PRONGHORN 11-14-12HZ PAD

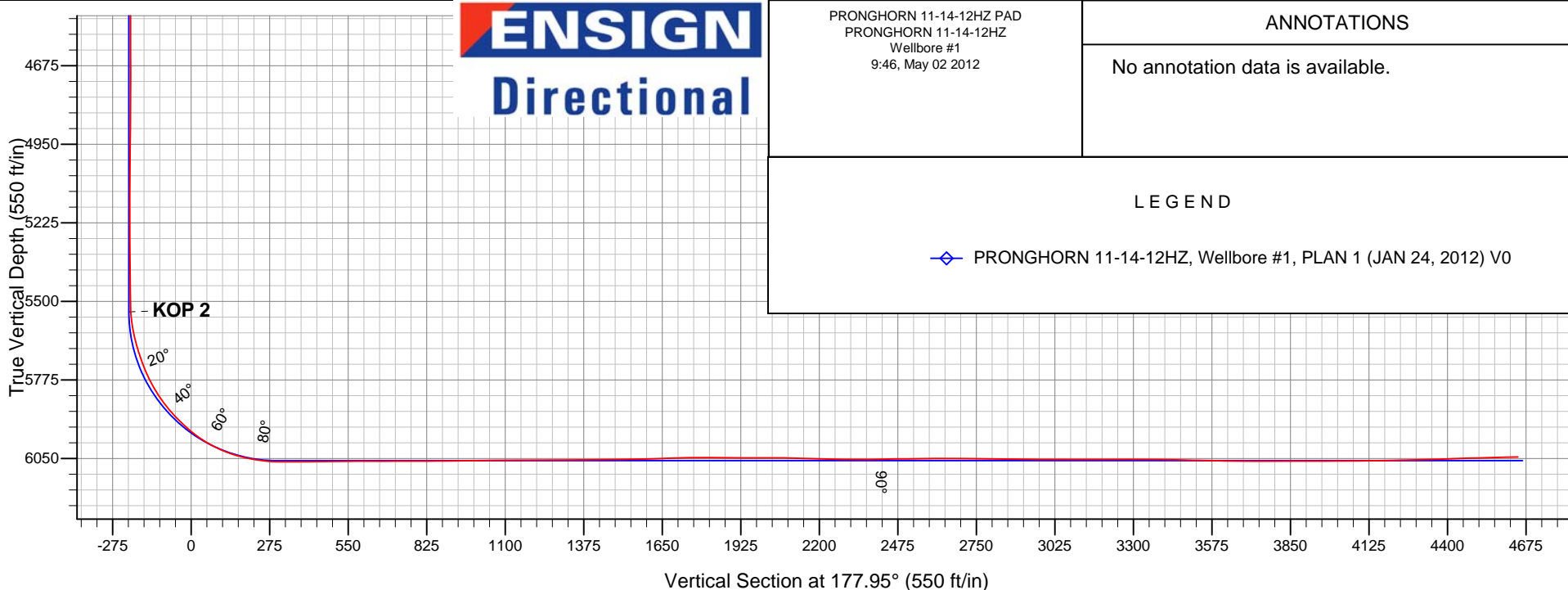
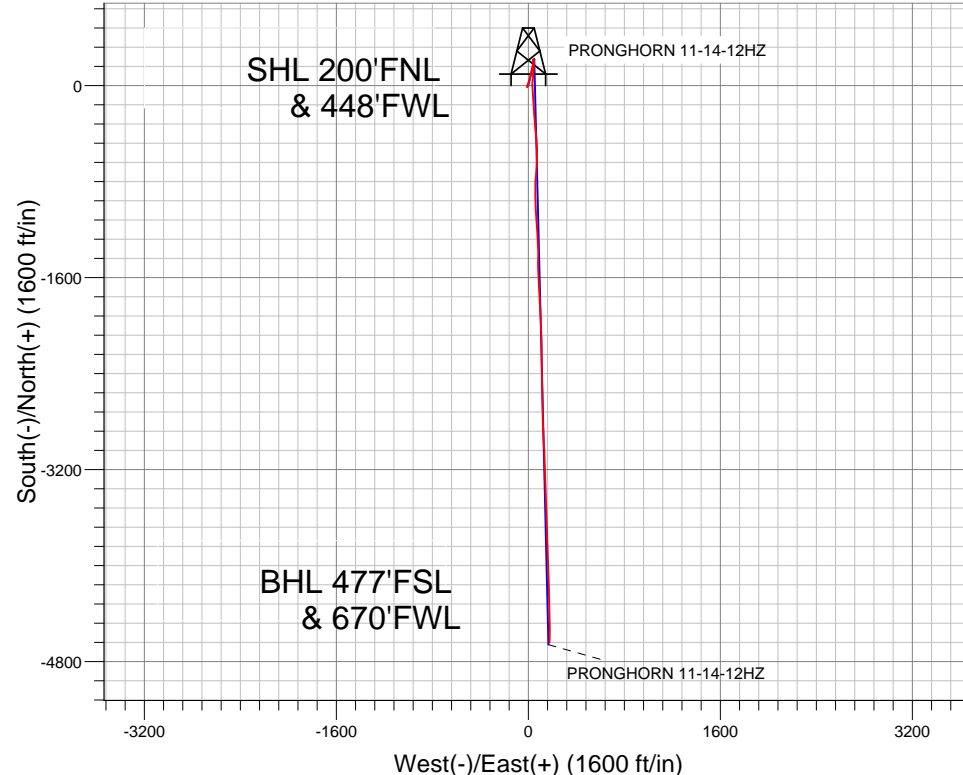
North American Datum 1983 , US State Plane 1983 , Colorado Northern Zone

Ground Elevation: 4649.0

+N/-S	+E/-W	Northing	Easting	Latitude	Longitude	Slot
0.0	0.0	1399627.44	3371892.77	40.422690	-104.164210	
KB 15' RKB @ 4664.0ft (KB 15')						

FINAL SURVEY

Projected Bottom Hole Location
10707'MD 6044'TVD 4643'S & 178'E of SHL
91.5 degree Incl @ 181.4 degree AZM





BONANZA CREEK ENERGY OPERATING

**SEC.12-T5N-R61W
PRONGHORN 11-14-12HZ PAD
PRONGHORN 11-14-12HZ**

Wellbore #1

Design: Wellbore #1

Standard Survey Report

02 May, 2012

Company:	BONANZA CREEK ENERGY OPERATING	Local Co-ordinate Reference:	Well PRONGHORN 11-14-12HZ
Project:	SEC.12-T5N-R61W	TVD Reference:	RKB @ 4664.0ft (KB 15')
Site:	PRONGHORN 11-14-12HZ PAD	MD Reference:	RKB @ 4664.0ft (KB 15')
Well:	PRONGHORN 11-14-12HZ	North Reference:	True
Wellbore:	Wellbore #1	Survey Calculation Method:	Minimum Curvature
Design:	Wellbore #1	Database:	Landmark

Project	SEC.12-T5N-R61W		
Map System:	US State Plane 1983	System Datum:	Mean Sea Level
Geo Datum:	North American Datum 1983		Using Well Reference Point
Map Zone:	Colorado Northern Zone		Using geodetic scale factor

Site	PRONGHORN 11-14-12HZ PAD		
Site Position:		Northing:	1,399,627.44 ft
From:	Lat/Long	Easting:	3,371,892.77 ft
Position Uncertainty:	0.0 ft	Slot Radius:	"
		Latitude:	40.422690
		Longitude:	-104.164210
		Grid Convergence:	0.86 °

Well	PRONGHORN 11-14-12HZ		
Well Position	+N/-S	0.0 ft	Northing: 1,399,627.44 ft
	+E/-W	0.0 ft	Easting: 3,371,892.77 ft
Position Uncertainty	0.0 ft	Wellhead Elevation:	ft
		Latitude:	40.422690
		Longitude:	-104.164210
		Ground Level:	4,649.0 ft

Wellbore	Wellbore #1				
Magnetics	Model Name	Sample Date	Declination (°)	Dip Angle (°)	Field Strength (nT)
	IGRF2010	1/24/2012	8.46	67.15	53,144

Design	Wellbore #1				
Audit Notes:					
Version:	1.0	Phase:	ACTUAL	Tie On Depth:	0.0
Vertical Section:	Depth From (TVD) (ft)	+N/-S (ft)	+E/-W (ft)	Direction (°)	
	0.0	0.0	0.0	177.95	

Survey Program	Date	5/2/2012			
From (ft)	To (ft)	Survey (Wellbore)	Tool Name	Description	
504.0	10,707.0	Survey #1 (Wellbore #1)	MWD	MWD - Standard	

Survey										
Measured Depth (ft)	Inclination (°)	Azimuth (°)	Vertical Depth (ft)	+N/-S (ft)	+E/-W (ft)	Vertical Section (ft)	Dogleg Rate (°/100ft)	Build Rate (°/100ft)	Turn Rate (°/100ft)	
0.0	0.00	0.00	0.0	0.0	0.0	0.0	0.00	0.00	0.00	
1.6	0.00	233.10	1.6	0.0	0.0	0.0	0.10	0.10	0.00	
HARDLINE 460'										
504.0	0.50	233.10	504.0	-1.3	-1.8	1.3	0.10	0.10	0.00	
630.0	0.40	219.40	630.0	-2.0	-2.5	1.9	0.12	-0.08	-10.87	
756.0	0.60	229.10	756.0	-2.8	-3.3	2.6	0.17	0.16	7.70	
882.0	0.50	221.30	882.0	-3.6	-4.1	3.5	0.10	-0.08	-6.19	
1,007.0	1.10	238.40	1,007.0	-4.6	-5.5	4.4	0.51	0.48	13.68	
1,134.0	1.20	243.00	1,133.9	-5.9	-7.7	5.6	0.11	0.08	3.62	
1,259.0	0.50	195.00	1,258.9	-7.0	-9.0	6.7	0.75	-0.56	-38.40	
1,383.0	0.50	211.00	1,382.9	-8.0	-9.4	7.7	0.11	0.00	12.90	
1,508.0	0.50	198.00	1,507.9	-9.0	-9.9	8.6	0.09	0.00	-10.40	
1,633.0	0.40	141.50	1,632.9	-9.8	-9.8	9.5	0.35	-0.08	-45.20	

Company:	BONANZA CREEK ENERGY OPERATING	Local Co-ordinate Reference:	Well PRONGHORN 11-14-12HZ
Project:	SEC.12-T5N-R61W	TVD Reference:	RKB @ 4664.0ft (KB 15')
Site:	PRONGHORN 11-14-12HZ PAD	MD Reference:	RKB @ 4664.0ft (KB 15')
Well:	PRONGHORN 11-14-12HZ	North Reference:	True
Wellbore:	Wellbore #1	Survey Calculation Method:	Minimum Curvature
Design:	Wellbore #1	Database:	Landmark

Survey										
Measured Depth (ft)	Inclination (°)	Azimuth (°)	Vertical Depth (ft)	+N/-S (ft)	+E/-W (ft)	Vertical Section (ft)	Dogleg Rate (°/100ft)	Build Rate (°/100ft)	Turn Rate (°/100ft)	
1,756.0	0.20	192.00	1,755.9	-10.4	-9.6	10.0	0.25	-0.16	41.06	
1,881.0	0.10	229.80	1,880.9	-10.7	-9.7	10.3	0.11	-0.08	30.24	
2,005.0	1.20	23.50	2,004.9	-9.6	-9.3	9.2	1.04	0.89	123.95	
2,098.0	1.70	16.90	2,097.9	-7.3	-8.5	7.0	0.57	0.54	-7.10	
2,191.0	2.00	6.40	2,190.8	-4.4	-7.9	4.1	0.49	0.32	-11.29	
2,285.0	2.80	13.40	2,284.7	-0.5	-7.2	0.3	0.90	0.85	7.45	
2,378.0	4.40	15.70	2,377.6	5.1	-5.7	-5.3	1.73	1.72	2.47	
2,471.0	5.70	18.10	2,470.2	12.9	-3.3	-13.0	1.42	1.40	2.58	
2,564.0	6.60	21.10	2,562.7	22.3	0.1	-22.3	1.03	0.97	3.23	
2,657.0	6.60	21.10	2,655.0	32.3	3.9	-32.1	0.00	0.00	0.00	
2,749.0	6.80	18.80	2,746.4	42.4	7.6	-42.1	0.36	0.22	-2.50	
2,843.0	6.10	15.70	2,839.8	52.4	10.7	-52.0	0.83	-0.74	-3.30	
2,937.0	5.60	14.60	2,933.3	61.7	13.2	-61.2	0.55	-0.53	-1.17	
3,030.0	5.70	12.00	3,025.9	70.6	15.3	-70.0	0.30	0.11	-2.80	
3,125.0	6.30	13.70	3,120.4	80.3	17.6	-79.6	0.66	0.63	1.79	
3,218.0	6.80	13.90	3,212.7	90.6	20.1	-89.8	0.54	0.54	0.22	
3,312.0	8.10	12.70	3,306.0	102.4	22.9	-101.6	1.39	1.38	-1.28	
3,404.0	9.30	12.00	3,396.9	116.0	25.8	-115.0	1.31	1.30	-0.76	
3,498.0	10.60	10.90	3,489.5	132.0	29.1	-130.8	1.40	1.38	-1.17	
3,592.0	10.20	14.40	3,581.9	148.5	32.8	-147.2	0.80	-0.43	3.72	
3,686.0	9.10	15.00	3,674.6	163.7	36.8	-162.3	1.18	-1.17	0.64	
3,779.0	7.70	12.00	3,766.6	176.9	40.0	-175.4	1.58	-1.51	-3.23	
3,873.0	5.10	7.90	3,860.0	187.2	41.8	-185.6	2.81	-2.77	-4.36	
3,967.0	3.30	10.00	3,953.8	194.0	42.9	-192.4	1.92	-1.91	2.23	
4,060.0	2.60	8.80	4,046.6	198.8	43.7	-197.1	0.76	-0.75	-1.29	
4,154.0	2.70	11.60	4,140.5	203.0	44.4	-201.3	0.17	0.11	2.98	
4,247.0	2.80	359.10	4,233.4	207.5	44.8	-205.7	0.65	0.11	-13.44	
4,341.0	2.10	357.70	4,327.3	211.5	44.7	-209.7	0.75	-0.74	-1.49	
4,434.0	0.60	350.00	4,420.3	213.7	44.6	-211.9	1.62	-1.61	-8.28	
4,529.0	0.40	105.10	4,515.3	214.1	44.8	-212.3	0.90	-0.21	121.16	
4,624.0	0.50	238.70	4,610.3	213.8	44.8	-212.0	0.87	0.11	140.63	
4,717.0	0.80	267.20	4,703.3	213.5	43.8	-211.8	0.46	0.32	30.65	
4,811.0	0.40	296.60	4,797.3	213.6	42.8	-212.0	0.52	-0.43	31.28	
4,904.0	0.80	339.80	4,890.3	214.4	42.3	-212.7	0.62	0.43	46.45	
4,998.0	0.90	329.60	4,984.3	215.6	41.7	-214.0	0.19	0.11	-10.85	
5,092.0	0.60	354.40	5,078.3	216.8	41.3	-215.2	0.46	-0.32	26.38	
5,186.0	0.70	224.00	5,172.3	216.8	40.9	-215.2	1.26	0.11	-138.72	
5,280.0	0.60	154.20	5,266.3	216.0	40.7	-214.4	0.80	-0.11	-74.26	
5,374.0	0.40	150.10	5,360.3	215.3	41.1	-213.7	0.22	-0.21	-4.36	
5,437.0	0.10	350.40	5,423.3	215.1	41.2	-213.5	0.79	-0.48	-253.49	
5,465.0	0.10	3.20	5,451.3	215.2	41.2	-213.6	0.08	0.00	45.71	
5,496.0	0.30	144.50	5,482.3	215.1	41.2	-213.5	1.24	0.65	455.81	
5,527.0	1.90	177.40	5,513.3	214.6	41.3	-212.9	5.34	5.16	106.13	
5,559.0	4.90	173.30	5,545.2	212.7	41.5	-211.0	9.40	9.38	-12.81	
5,590.0	7.80	178.60	5,576.0	209.3	41.7	-207.6	9.53	9.35	17.10	
5,621.0	11.10	179.70	5,606.6	204.2	41.7	-202.5	10.66	10.65	3.55	
5,653.0	14.40	177.90	5,637.8	197.1	41.9	-195.5	10.39	10.31	-5.63	
5,684.0	16.80	176.70	5,667.6	188.8	42.3	-187.1	7.81	7.74	-3.87	
5,715.0	19.10	174.00	5,697.1	179.3	43.1	-177.6	7.89	7.42	-8.71	
5,746.0	20.90	176.20	5,726.3	168.7	44.0	-167.0	6.29	5.81	7.10	
5,777.0	24.40	178.30	5,754.9	156.8	44.5	-155.1	11.59	11.29	6.77	
5,808.0	27.30	181.10	5,782.8	143.3	44.6	-141.6	10.15	9.35	9.03	
5,840.0	31.20	184.40	5,810.7	127.7	43.8	-126.0	13.18	12.19	10.31	
5,870.0	34.30	185.30	5,835.9	111.5	42.4	-109.9	10.46	10.33	3.00	

Company:	BONANZA CREEK ENERGY OPERATING	Local Co-ordinate Reference:	Well PRONGHORN 11-14-12HZ
Project:	SEC.12-T5N-R61W	TVD Reference:	RKB @ 4664.0ft (KB 15')
Site:	PRONGHORN 11-14-12HZ PAD	MD Reference:	RKB @ 4664.0ft (KB 15')
Well:	PRONGHORN 11-14-12HZ	North Reference:	True
Wellbore:	Wellbore #1	Survey Calculation Method:	Minimum Curvature
Design:	Wellbore #1	Database:	Landmark

Survey

Measured Depth (ft)	Inclination (°)	Azimuth (°)	Vertical Depth (ft)	+N/-S (ft)	+E/-W (ft)	Vertical Section (ft)	Dogleg Rate (°/100ft)	Build Rate (°/100ft)	Turn Rate (°/100ft)
5,902.0	38.20	186.70	5,861.7	92.7	40.4	-91.2	12.46	12.19	4.38
5,933.0	41.10	186.90	5,885.6	73.0	38.1	-71.6	9.36	9.35	0.65
5,964.0	44.40	184.10	5,908.3	52.1	36.1	-50.8	12.28	10.65	-9.03
5,996.0	46.80	183.70	5,930.7	29.3	34.5	-28.0	7.55	7.50	-1.25
6,027.0	49.60	180.20	5,951.4	6.2	33.8	-5.0	12.34	9.03	-11.29
6,058.0	53.30	177.40	5,970.7	-18.0	34.3	19.2	13.87	11.94	-9.03
6,088.0	57.50	175.60	5,987.7	-42.7	35.8	43.9	14.84	14.00	-6.00
6,119.0	61.80	175.30	6,003.4	-69.3	37.9	70.6	13.90	13.87	-0.97
6,151.0	66.00	176.50	6,017.5	-98.0	40.0	99.4	13.55	13.13	3.75
6,182.0	69.60	176.90	6,029.2	-126.6	41.6	128.0	11.67	11.61	1.29
6,213.0	73.50	176.90	6,039.0	-156.0	43.2	157.4	12.58	12.58	0.00
6,245.0	76.80	176.90	6,047.2	-186.9	44.9	188.4	10.31	10.31	0.00
6,276.0	80.10	175.80	6,053.4	-217.2	46.8	218.7	11.20	10.65	-3.55
6,308.0	83.00	174.90	6,058.1	-248.7	49.4	250.3	9.48	9.06	-2.81
6,314.6	83.77	174.96	6,058.9	-255.3	50.0	256.9	11.75	11.71	0.98
TARGET 1 460°FNL & 460°FWL									
6,349.0	87.80	175.30	6,061.4	-289.4	52.9	291.1	11.75	11.71	0.97
6,397.0	90.30	176.00	6,062.2	-337.3	56.5	339.1	5.41	5.21	1.46
6,427.0	90.40	174.90	6,062.0	-367.2	58.9	369.1	3.68	0.33	-3.67
6,458.0	90.70	174.90	6,061.7	-398.1	61.7	400.0	0.97	0.97	0.00
6,488.0	91.30	174.40	6,061.2	-427.9	64.5	430.0	2.60	2.00	-1.67
6,520.0	90.50	175.30	6,060.7	-459.8	67.3	461.9	3.76	-2.50	2.81
6,551.0	89.80	175.80	6,060.6	-490.7	69.7	492.9	2.77	-2.26	1.61
6,582.0	90.80	177.20	6,060.4	-521.6	71.6	523.9	5.55	3.23	4.52
6,613.0	89.90	179.80	6,060.2	-552.6	72.4	554.9	8.88	-2.90	8.39
6,644.0	90.30	180.90	6,060.2	-583.6	72.3	585.8	3.78	1.29	3.55
6,675.0	90.30	182.30	6,060.0	-614.6	71.4	616.8	4.52	0.00	4.52
6,705.0	90.00	182.70	6,059.9	-644.6	70.1	646.7	1.67	-1.00	1.33
6,737.0	90.50	184.10	6,059.8	-676.5	68.2	678.5	4.65	1.56	4.38
6,767.0	90.10	184.10	6,059.6	-706.5	66.0	708.4	1.33	-1.33	0.00
6,799.0	90.10	185.10	6,059.6	-738.3	63.5	740.1	3.13	0.00	3.13
6,830.0	90.00	183.70	6,059.6	-769.3	61.1	771.0	4.53	-0.32	-4.52
6,861.0	90.00	181.60	6,059.6	-800.2	59.7	801.8	6.77	0.00	-6.77
6,892.0	90.30	181.60	6,059.5	-831.2	58.8	832.8	0.97	0.97	0.00
6,922.0	90.70	180.50	6,059.2	-861.2	58.2	862.7	3.90	1.33	-3.67
6,954.0	91.00	180.70	6,058.7	-893.2	57.9	894.7	1.13	0.94	0.63
6,985.0	90.70	179.00	6,058.3	-924.2	58.0	925.7	5.57	-0.97	-5.48
7,016.0	90.70	177.60	6,057.9	-955.2	58.9	956.7	4.52	0.00	-4.52
7,047.0	89.70	177.40	6,057.8	-986.1	60.3	987.7	3.29	-3.23	-0.65
7,079.0	90.00	177.20	6,057.9	-1,018.1	61.8	1,019.7	1.13	0.94	-0.63
7,110.0	91.50	177.60	6,057.5	-1,049.1	63.2	1,050.7	5.01	4.84	1.29
7,141.0	90.70	177.00	6,056.9	-1,080.0	64.6	1,081.7	3.23	-2.58	-1.94
7,173.0	89.30	176.00	6,056.9	-1,112.0	66.6	1,113.6	5.38	-4.38	-3.13
7,204.0	90.40	176.30	6,057.0	-1,142.9	68.7	1,144.6	3.68	3.55	0.97
7,235.0	91.50	177.40	6,056.5	-1,173.9	70.4	1,175.6	5.02	3.55	3.55
7,266.0	90.10	175.10	6,056.0	-1,204.8	72.4	1,206.6	8.68	-4.52	-7.42
7,298.0	90.00	175.50	6,056.0	-1,236.7	75.0	1,238.6	1.29	-0.31	1.25
7,328.0	91.00	176.50	6,055.7	-1,266.6	77.1	1,268.5	4.71	3.33	3.33
7,359.0	90.30	176.20	6,055.4	-1,297.5	79.1	1,299.5	2.46	-2.26	-0.97
7,390.0	90.50	177.20	6,055.2	-1,328.5	80.9	1,330.5	3.29	0.65	3.23
7,422.0	90.50	178.30	6,054.9	-1,360.5	82.1	1,362.5	3.44	0.00	3.44
7,453.0	90.00	179.70	6,054.7	-1,391.4	82.7	1,393.5	4.80	-1.61	4.52
7,483.0	90.50	180.50	6,054.6	-1,421.4	82.6	1,423.5	3.14	1.67	2.67
7,515.0	89.80	180.50	6,054.5	-1,453.4	82.3	1,455.5	2.19	-2.19	0.00

Company:	BONANZA CREEK ENERGY OPERATING	Local Co-ordinate Reference:	Well PRONGHORN 11-14-12HZ
Project:	SEC.12-T5N-R61W	TVD Reference:	RKB @ 4664.0ft (KB 15')
Site:	PRONGHORN 11-14-12HZ PAD	MD Reference:	RKB @ 4664.0ft (KB 15')
Well:	PRONGHORN 11-14-12HZ	North Reference:	True
Wellbore:	Wellbore #1	Survey Calculation Method:	Minimum Curvature
Design:	Wellbore #1	Database:	Landmark

Survey									
Measured Depth (ft)	Inclination (°)	Azimuth (°)	Vertical Depth (ft)	+N/-S (ft)	+E/-W (ft)	Vertical Section (ft)	Dogleg Rate (°/100ft)	Build Rate (°/100ft)	Turn Rate (°/100ft)
7,546.0	90.20	180.40	6,054.5	-1,484.4	82.1	1,486.4	1.33	1.29	-0.32
7,578.0	91.10	179.50	6,054.2	-1,516.4	82.1	1,518.4	3.98	2.81	-2.81
7,608.0	91.20	179.00	6,053.6	-1,546.4	82.5	1,548.4	1.70	0.33	-1.67
7,639.0	92.00	178.60	6,052.7	-1,577.4	83.2	1,579.4	2.89	2.58	-1.29
7,669.0	92.10	177.60	6,051.6	-1,607.4	84.2	1,609.4	3.35	0.33	-3.33
7,699.0	92.10	177.40	6,050.5	-1,637.3	85.5	1,639.3	0.67	0.00	-0.67
7,731.0	91.50	176.70	6,049.5	-1,669.3	87.1	1,671.3	2.88	-1.88	-2.19
7,762.0	91.50	176.00	6,048.7	-1,700.2	89.1	1,702.3	2.26	0.00	-2.26
7,792.0	91.60	175.60	6,047.9	-1,730.1	91.3	1,732.3	1.37	0.33	-1.33
7,823.0	90.90	175.80	6,047.2	-1,761.0	93.6	1,763.2	2.35	-2.26	0.65
7,854.0	89.50	176.20	6,047.1	-1,791.9	95.8	1,794.2	4.70	-4.52	1.29
7,886.0	90.10	176.30	6,047.2	-1,823.9	97.9	1,826.2	1.90	1.88	0.31
7,917.0	90.00	177.20	6,047.2	-1,854.8	99.6	1,857.2	2.92	-0.32	2.90
7,948.0	88.60	177.70	6,047.6	-1,885.8	101.0	1,888.2	4.80	-4.52	1.61
7,980.0	89.90	177.70	6,048.0	-1,917.7	102.3	1,920.2	4.06	4.06	0.00
8,010.0	90.70	178.60	6,047.8	-1,947.7	103.3	1,950.2	4.01	2.67	3.00
8,040.0	89.30	178.30	6,047.8	-1,977.7	104.1	1,980.2	4.77	-4.67	-1.00
8,071.0	89.50	178.60	6,048.2	-2,008.7	104.9	2,011.2	1.16	0.65	0.97
8,102.0	90.20	178.40	6,048.2	-2,039.7	105.7	2,042.2	2.35	2.26	-0.65
8,134.0	90.00	178.40	6,048.2	-2,071.7	106.6	2,074.2	0.63	-0.63	0.00
8,165.0	87.80	178.60	6,048.8	-2,102.7	107.4	2,105.2	7.13	-7.10	0.65
8,196.0	88.10	178.60	6,049.9	-2,133.6	108.2	2,136.1	0.97	0.97	0.00
8,227.0	88.30	178.80	6,050.9	-2,164.6	108.9	2,167.1	0.91	0.65	0.65
8,259.0	88.30	178.40	6,051.8	-2,196.6	109.7	2,199.1	1.25	0.00	-1.25
8,290.0	88.30	178.80	6,052.7	-2,227.6	110.4	2,230.1	1.29	0.00	1.29
8,322.0	89.40	179.00	6,053.4	-2,259.6	111.0	2,262.1	3.49	3.44	0.63
8,353.0	89.40	179.50	6,053.7	-2,290.6	111.4	2,293.1	1.61	0.00	1.61
8,383.0	89.90	179.30	6,053.9	-2,320.5	111.8	2,323.1	1.80	1.67	-0.67
8,414.0	90.20	178.80	6,053.9	-2,351.5	112.3	2,354.1	1.88	0.97	-1.61
8,445.0	90.90	179.30	6,053.6	-2,382.5	112.8	2,385.0	2.77	2.26	1.61
8,476.0	91.20	179.50	6,053.0	-2,413.5	113.1	2,416.0	1.16	0.97	0.65
8,508.0	90.70	179.10	6,052.5	-2,445.5	113.5	2,448.0	2.00	-1.56	-1.25
8,539.0	90.90	178.80	6,052.0	-2,476.5	114.1	2,479.0	1.16	0.65	-0.97
8,570.0	90.80	179.10	6,051.6	-2,507.5	114.6	2,510.0	1.02	-0.32	0.97
8,601.0	90.70	179.10	6,051.2	-2,538.5	115.1	2,541.0	0.32	-0.32	0.00
8,633.0	90.80	178.60	6,050.7	-2,570.5	115.8	2,573.0	1.59	0.31	-1.56
8,664.0	90.70	179.30	6,050.3	-2,601.5	116.3	2,604.0	2.28	-0.32	2.26
8,695.0	90.40	179.10	6,050.0	-2,632.5	116.8	2,635.0	1.16	-0.97	-0.65
8,727.0	89.30	178.80	6,050.1	-2,664.5	117.3	2,667.0	3.56	-3.44	-0.94
8,758.0	89.10	179.00	6,050.6	-2,695.5	117.9	2,698.0	0.91	-0.65	0.65
8,789.0	89.30	178.60	6,051.0	-2,726.5	118.6	2,729.0	1.44	0.65	-1.29
8,820.0	89.30	178.30	6,051.4	-2,757.4	119.4	2,759.9	0.97	0.00	-0.97
8,852.0	89.50	178.10	6,051.7	-2,789.4	120.4	2,791.9	0.88	0.63	-0.63
8,883.0	89.30	177.70	6,052.0	-2,820.4	121.6	2,822.9	1.44	-0.65	-1.29
8,915.0	89.40	177.70	6,052.4	-2,852.4	122.9	2,854.9	0.31	0.31	0.00
8,946.0	89.30	177.70	6,052.7	-2,883.3	124.1	2,885.9	0.32	-0.32	0.00
8,977.0	89.40	177.40	6,053.1	-2,914.3	125.4	2,916.9	1.02	0.32	-0.97
9,009.0	89.40	177.20	6,053.4	-2,946.3	126.9	2,948.9	0.62	0.00	-0.63
9,040.0	89.30	176.90	6,053.8	-2,977.2	128.5	2,979.9	1.02	-0.32	-0.97
9,071.0	89.60	176.50	6,054.1	-3,008.2	130.3	3,010.9	1.61	0.97	-1.29
9,102.0	89.90	177.00	6,054.2	-3,039.1	132.1	3,041.9	1.88	0.97	1.61
9,134.0	90.10	177.70	6,054.2	-3,071.1	133.5	3,073.9	2.28	0.63	2.19
9,165.0	90.20	177.60	6,054.1	-3,102.1	134.8	3,104.9	0.46	0.32	-0.32
9,196.0	90.10	177.40	6,054.1	-3,133.0	136.2	3,135.9	0.72	-0.32	-0.65

Company:	BONANZA CREEK ENERGY OPERATING	Local Co-ordinate Reference:	Well PRONGHORN 11-14-12HZ
Project:	SEC.12-T5N-R61W	TVD Reference:	RKB @ 4664.0ft (KB 15')
Site:	PRONGHORN 11-14-12HZ PAD	MD Reference:	RKB @ 4664.0ft (KB 15')
Well:	PRONGHORN 11-14-12HZ	North Reference:	True
Wellbore:	Wellbore #1	Survey Calculation Method:	Minimum Curvature
Design:	Wellbore #1	Database:	Landmark

Survey										
Measured Depth (ft)	Inclination (°)	Azimuth (°)	Vertical Depth (ft)	+N/-S (ft)	+E/-W (ft)	Vertical Section (ft)	Dogleg Rate (°/100ft)	Build Rate (°/100ft)	Turn Rate (°/100ft)	
9,226.0	90.00	177.90	6,054.0	-3,163.0	137.4	3,165.9	1.70	-0.33	1.67	
9,257.0	90.10	178.40	6,054.0	-3,194.0	138.4	3,196.9	1.64	0.32	1.61	
9,289.0	90.20	178.40	6,053.9	-3,226.0	139.3	3,228.9	0.31	0.31	0.00	
9,320.0	90.60	178.30	6,053.7	-3,257.0	140.2	3,259.9	1.33	1.29	-0.32	
9,351.0	89.90	178.40	6,053.6	-3,288.0	141.1	3,290.9	2.28	-2.26	0.32	
9,382.0	90.00	178.10	6,053.6	-3,318.9	142.0	3,321.9	1.02	0.32	-0.97	
9,414.0	89.30	178.40	6,053.8	-3,350.9	143.0	3,353.9	2.38	-2.19	0.94	
9,445.0	89.30	178.30	6,054.2	-3,381.9	143.9	3,384.9	0.32	0.00	-0.32	
9,476.0	89.40	177.20	6,054.5	-3,412.9	145.1	3,415.9	3.56	0.32	-3.55	
9,508.0	88.80	177.40	6,055.0	-3,444.8	146.6	3,447.9	1.98	-1.88	0.63	
9,539.0	88.50	177.40	6,055.8	-3,475.8	148.0	3,478.9	0.97	-0.97	0.00	
9,570.0	88.50	177.90	6,056.6	-3,506.8	149.3	3,509.9	1.61	0.00	1.61	
9,601.0	88.60	178.30	6,057.3	-3,537.7	150.3	3,540.9	1.33	0.32	1.29	
9,633.0	88.70	177.90	6,058.1	-3,569.7	151.4	3,572.8	1.29	0.31	-1.25	
9,664.0	88.90	178.30	6,058.8	-3,600.7	152.4	3,603.8	1.44	0.65	1.29	
9,694.0	89.60	178.80	6,059.1	-3,630.7	153.2	3,633.8	2.87	2.33	1.67	
9,725.0	89.60	178.10	6,059.4	-3,661.7	154.0	3,664.8	2.26	0.00	-2.26	
9,755.0	89.50	178.60	6,059.6	-3,691.7	154.9	3,694.8	1.70	-0.33	1.67	
9,787.0	89.90	179.00	6,059.8	-3,723.6	155.5	3,726.8	1.77	1.25	1.25	
9,818.0	89.80	179.10	6,059.8	-3,754.6	156.1	3,757.8	0.46	-0.32	0.32	
9,849.0	90.20	178.30	6,059.8	-3,785.6	156.8	3,788.8	2.89	1.29	-2.58	
9,881.0	90.30	178.10	6,059.7	-3,817.6	157.8	3,820.8	0.70	0.31	-0.63	
9,912.0	90.30	177.70	6,059.5	-3,848.6	158.9	3,851.8	1.29	0.00	-1.29	
9,943.0	90.30	178.30	6,059.4	-3,879.6	160.0	3,882.8	1.94	0.00	1.94	
9,975.0	90.00	178.40	6,059.3	-3,911.6	160.9	3,914.8	0.99	-0.94	0.31	
10,006.0	89.90	177.40	6,059.3	-3,942.5	162.0	3,945.8	3.24	-0.32	-3.23	
10,037.0	90.30	177.70	6,059.3	-3,973.5	163.4	3,976.8	1.61	1.29	0.97	
10,069.0	90.20	178.10	6,059.1	-4,005.5	164.5	4,008.8	1.29	-0.31	1.25	
10,099.0	90.20	177.70	6,059.0	-4,035.5	165.6	4,038.8	1.33	0.00	-1.33	
10,131.0	90.80	177.90	6,058.7	-4,067.4	166.9	4,070.8	1.98	1.88	0.63	
10,162.0	90.70	177.90	6,058.3	-4,098.4	168.0	4,101.8	0.32	-0.32	0.00	
10,193.0	90.50	177.90	6,058.0	-4,129.4	169.1	4,132.8	0.65	-0.65	0.00	
10,224.0	90.70	177.60	6,057.7	-4,160.4	170.4	4,163.8	1.16	0.65	-0.97	
10,256.0	91.00	178.10	6,057.2	-4,192.3	171.6	4,195.8	1.82	0.94	1.56	
10,287.0	90.90	177.90	6,056.7	-4,223.3	172.6	4,226.8	0.72	-0.32	-0.65	
10,317.0	90.70	178.80	6,056.3	-4,253.3	173.5	4,256.8	3.07	-0.67	3.00	
10,349.0	91.30	178.40	6,055.7	-4,285.3	174.3	4,288.8	2.25	1.88	-1.25	
10,380.0	92.00	178.40	6,054.8	-4,316.3	175.1	4,319.8	2.26	2.26	0.00	
10,412.0	92.60	177.70	6,053.5	-4,348.2	176.2	4,351.7	2.88	1.88	-2.19	
10,443.0	92.70	178.10	6,052.1	-4,379.2	177.4	4,382.7	1.33	0.32	1.29	
10,473.0	92.10	178.40	6,050.9	-4,409.1	178.3	4,412.7	2.24	-2.00	1.00	
10,504.0	91.60	178.80	6,049.9	-4,440.1	179.0	4,443.7	2.07	-1.61	1.29	
10,536.0	91.10	179.70	6,049.1	-4,472.1	179.5	4,475.7	3.22	-1.56	2.81	
10,567.0	91.70	180.20	6,048.3	-4,503.1	179.5	4,506.6	2.52	1.94	1.61	
10,598.0	91.70	181.30	6,047.4	-4,534.1	179.1	4,537.6	3.55	0.00	3.55	
10,630.0	91.20	181.40	6,046.6	-4,566.0	178.3	4,569.5	1.59	-1.56	0.31	
10,661.0	91.50	181.40	6,045.9	-4,597.0	177.6	4,600.4	0.97	0.97	0.00	
10,707.0	91.50	181.40	6,044.7	-4,643.0	176.4	4,646.3	0.00	0.00	0.00	
TARGET 2 460'FSL & 660'FWL										

Company:	BONANZA CREEK ENERGY OPERATING	Local Co-ordinate Reference:	Well PRONGHORN 11-14-12HZ
Project:	SEC.12-T5N-R61W	TVD Reference:	RKB @ 4664.0ft (KB 15')
Site:	PRONGHORN 11-14-12HZ PAD	MD Reference:	RKB @ 4664.0ft (KB 15')
Well:	PRONGHORN 11-14-12HZ	North Reference:	True
Wellbore:	Wellbore #1	Survey Calculation Method:	Minimum Curvature
Design:	Wellbore #1	Database:	Landmark

Checked By: _____	Approved By: _____	Date: _____
-------------------	--------------------	-------------