

Downhole Schematic for Elmquist 4-2-23



Project :DJ Basin

Area : Wattenberg

As Of : 03/23/2012

API # :05123320090000

County :

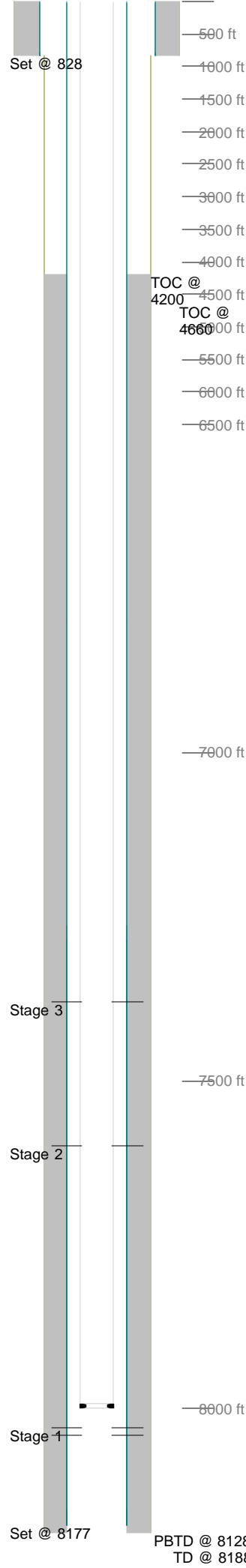
GL : 4917.0 ft

Surface Location : SENW Sec 23 T2N - R68W 6th P

BHL : NENW-23-2N-68 W 6th PM

KB to GL : 13.0 ft

KB : 4930.0 ft



Casing Details									
Section	Hole	Casing	Mass	Set At	Length	Thread	Grade	Description	
Surface	12.250		0	828	1			GS	
		8.625	24	827	40		J55	SJ / BAFFLE	
		8.625	24	787	773		J55	CSG	
			0	13	13			LJ	
Production	7.875		0	8,177	1			Guide Shoe	
		4.5	11.6	8,176	23		L-80	Shoe Jt	
			0	8,153	1			Float Collar	
		4.5	11.6	8,152	865		L-80	Casing	
		4.5	11.6	7,286	23		L-80	Marker Jt	
		4.5	11.6	7,264	7,251		L-80	Casing	
		4.5	11.6	13	13		L-80	Landing Jt	
Cement Details									
Section	Sequence	Top	Density	Blend / Additives					
Surface	Lead	0	14.2	SWIFTCEM / SWIFTCEM (TM) SYSTEM (452990)					
Production	Lead	4,200	12.5	Premium Lite Cmt / +0.1% R-3 + 0.2% CD-32 +0.7% FL-63 + 0.2% ASA-301 + 6% Bentonite + 3 lbs/sx CSE-2					
	Tail	6,800	13.5	(50:50 Poz,Fly Ash / Class G Cmt + 0.1% R-3 + 0.6% FL-63 + 3% Bentonite + 0.1% SM + 20% Silica Flour					
Tubing and Downhole Equipment									
O.D.	Length	Depth	Description						
0.000	12.00	12.00	KB						
0.000	0.50	12.50	Hanger						
2.375	7,979.82	7,992.32	246 jts of new 2-3/8 J-55 EUE 4.7#, 8rd tbg,						
2.375	1.10	7,993.42	Seat nipple						
0.000	10.10	8,003.52	2-3/8 J-55 pup jt						
0.000	0.41	8,003.93	Notch collar						
Perforations									
Stage 1	Date	From	To	Shots	Stage 3	Date	From	To	Shots
	01/06/2012	8,040	8,062	44		01/13/2012	7,599	7,622	46
		8,028	8,034	12					
Stage 2	Date	From	To	Shots	Stage 3	Date	From	To	Shots
						01/13/2012	7,379	7,400	84
Frac Summary									
Stage 1 : 8,028 - 8,062, 56 - 0.410" shots, 3720 bbls of Hybrid, 250544 lbs of 20/40 Sand Report Date: 01/13/2012									
Stage 2 : 7,599 - 7,622, 56 - 0.410" shots, 2661 bbls of SLICKWATER, 251640 lbs of 20/40 Sand Report Date: 01/13/2012									
Stage 3 : 7,379 - 7,400, 56 - 0.410" shots, 3199 bbls of SLICKWATER, 250760 lbs of 20/40 Sand Report Date: 01/13/2012									
Bridge Plug Details									
Depth	Date Set	Plug Type	Sacks Cement						
7,660.0	01/13/2012	CBP	0						
7,460.0	01/13/2012	CBP	0						
7,300.0	03/16/2012	CBP	0						
CBP at 7,660.0 drilled out 03/21/2012									
CBP at 7,460.0 drilled out 03/21/2012									
CBP at 7,300.0 drilled out 03/21/2012									