

# KERR-MCGEE OIL & GAS ONSHORE LP

Location: COLORADO Slot: SLOT#04 CANNON 36N-11HZ (610'FNL & 676'FWL, SEC.11)  
Field: WELD COUNTY (KERR MCGEE) Well: CANNON 36N-11HZ  
Facility: SEC.11-T2N-R66W Wellbore: CANNON 36N-11HZ PWB

Plot reference wellpath is CANNON 36N-11HZ (REV-B.1) PWP

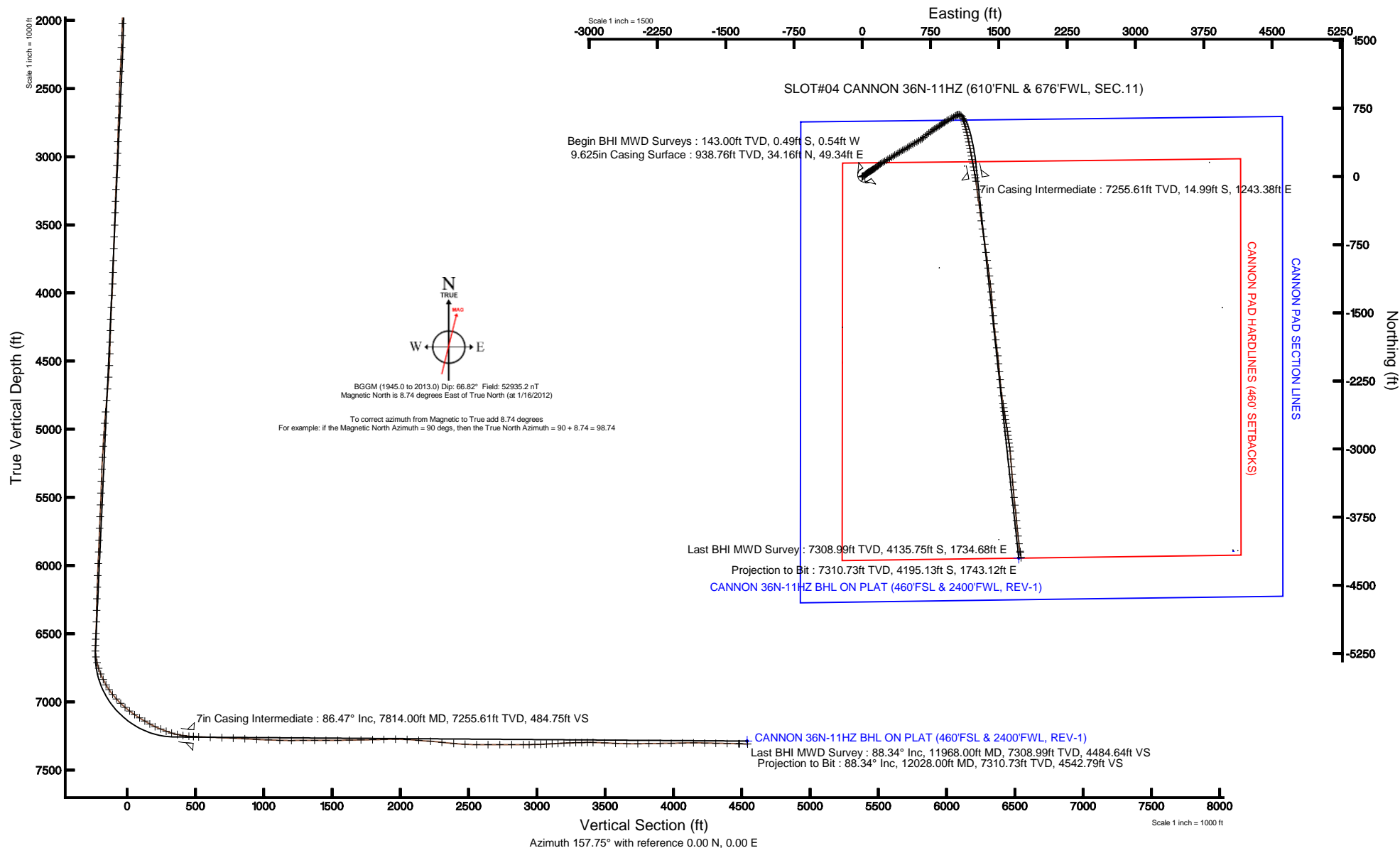
True vertical depths are referenced to XTREME 8 (RKB) Grid System: NAD83 / Lambert Colorado SP, Northern Zone (501), US feet

Measured depths are referenced to XTREME 8 (RKB) North Reference: True north

XTREME 8 (RKB) to Mean Sea Level: 5059 feet Scale: True distance

Mean Sea Level to Mud line (At Slot: SLOT#04 CANNON 36N-11HZ (610'FNL & 676'FWL, SEC.11)): 0 feet Depths are in feet

Coordinates are in feet referenced to Slot Created by: wiljel02 on 2/27/2012





# Actual Wellpath Report

CANNON 36N-11HZ AWP

Page 1 of 6



## REFERENCE WELLPATH IDENTIFICATION

Operator	KERR-MCGEE OIL & GAS ONSHORE LP	Slot	SLOT#04 CANNON 36N-11HZ (610'FNL & 676'FWL, SEC.11)
Area	COLORADO	Well	CANNON 36N-11HZ
Field	WELD COUNTY (KERR MCGEE)	Wellbore	CANNON 36N-11HZ AWB
Facility	SEC.11-T2N-R66W		

## REPORT SETUP INFORMATION

Projection System	NAD83 / Lambert Colorado SP, Northern Zone (501), US feet	Software System	WellArchitect® 3.0.2
North Reference	True	User	Wilsjef02
Scale	0.999958	Report Generated	2/27/2012 at 10:47:29
Convergence at slot	0.48° East	Database/Source file	WellArchitectDB/CANNON_36N-11HZ_AWB.xml

## WELLPATH LOCATION

	Local coordinates		Grid coordinates		Geographic coordinates	
	North[ft]	East[ft]	Easting[US ft]	Northing[US ft]	Latitude	Longitude
Slot Location	4127.91	-4073.39	3209240.06	1301402.83	40°09'29.956"N	104°45'04.957"W
Facility Reference Pt			3213348.65	1297310.31	40°08'49.167"N	104°44'12.494"W
Field Reference Pt			3197771.84	1268891.29	40°04'09.600"N	104°47'36.000"W

## WELLPATH DATUM

Calculation method	Minimum curvature	XTREME 8 (RKB) to Facility Vertical Datum	5059.00ft
Horizontal Reference Pt	Slot	XTREME 8 (RKB) to Mean Sea Level	5059.00ft
Vertical Reference Pt	XTREME 8 (RKB)	XTREME 8 (RKB) to Mud Line at Slot (SLOT#04 CANNON 36N-11HZ (610'FNL & 676'FWL, SEC.11))	5059.00ft
MD Reference Pt	XTREME 8 (RKB)	Section Origin	N 0.00, E 0.00 ft
Field Vertical Reference	Mean Sea Level	Section Azimuth	157.75°



# Actual Wellpath Report

CANNON 36N-11HZ AWP

Page 2 of 6



## REFERENCE WELLPATH IDENTIFICATION

Operator	KERR-MCGEE OIL & GAS ONSHORE LP	Slot	SLOT#04 CANNON 36N-11HZ (610'FNL & 676'FWL, SEC.11)
Area	COLORADO	Well	CANNON 36N-11HZ
Field	WELD COUNTY (KERR MCGEE)	Wellbore	CANNON 36N-11HZ AWB
Facility	SEC.11-T2N-R66W		

## WELLPATH DATA (160 stations) † = interpolated/extrapolated station

MD [ft]	Inclination [°]	Azimuth [°]	TVD [ft]	Vert Sect [ft]	North [ft]	East [ft]	Latitude	Longitude	DLS [°/100ft]	Comments
0.00†	0.000	227.930	0.00	0.00	0.00	0.00	40°09'29.956"N	104°45'04.957"W	0.00	
17.00	0.000	227.930	17.00	0.00	0.00	0.00	40°09'29.956"N	104°45'04.957"W	0.00	
143.00	0.660	227.930	143.00	0.25	-0.49	-0.54	40°09'29.951"N	104°45'04.964"W	0.52	Begin BHI MWD Surveys
236.00	0.680	43.340	236.00	0.20	-0.44	-0.56	40°09'29.952"N	104°45'04.964"W	1.44	
331.00	1.450	44.700	330.98	-0.50	0.82	0.67	40°09'29.964"N	104°45'04.948"W	0.81	
420.00	2.780	56.610	419.92	-1.36	2.81	3.27	40°09'29.984"N	104°45'04.915"W	1.57	
508.00	4.100	59.780	507.76	-2.21	5.57	7.77	40°09'30.011"N	104°45'04.857"W	1.51	
595.00	6.410	56.440	594.38	-3.59	9.82	14.50	40°09'30.053"N	104°45'04.770"W	2.68	
684.00	7.690	55.190	682.71	-5.86	15.96	23.53	40°09'30.114"N	104°45'04.654"W	1.45	
772.00	7.480	54.380	769.94	-8.47	22.66	33.02	40°09'30.180"N	104°45'04.532"W	0.27	
859.00	6.650	55.150	856.28	-10.87	28.84	41.76	40°09'30.241"N	104°45'04.419"W	0.96	
890.00	6.420	55.620	887.08	-11.63	30.84	44.67	40°09'30.261"N	104°45'04.382"W	0.76	
963.00	6.170	52.590	959.64	-13.51	35.53	51.15	40°09'30.307"N	104°45'04.298"W	0.57	
1054.00	6.000	52.320	1050.12	-16.06	41.41	58.80	40°09'30.365"N	104°45'04.200"W	0.19	
1144.00	6.250	51.830	1139.61	-18.65	47.31	66.37	40°09'30.424"N	104°45'04.102"W	0.28	
1235.00	6.030	61.210	1230.09	-20.55	52.67	74.46	40°09'30.477"N	104°45'03.998"W	1.13	
1326.00	5.680	62.280	1320.62	-21.53	57.07	82.63	40°09'30.520"N	104°45'03.893"W	0.40	
1418.00	5.700	59.480	1412.16	-22.62	61.51	90.60	40°09'30.564"N	104°45'03.790"W	0.30	
1509.00	5.730	57.420	1502.71	-24.08	66.25	98.32	40°09'30.611"N	104°45'03.691"W	0.23	
1598.00	6.040	56.940	1591.24	-25.76	71.20	105.99	40°09'30.660"N	104°45'03.592"W	0.35	
1685.00	6.080	57.290	1677.75	-27.45	76.18	113.70	40°09'30.709"N	104°45'03.493"W	0.06	
1773.00	6.440	56.610	1765.23	-29.25	81.42	121.74	40°09'30.761"N	104°45'03.389"W	0.42	
1857.00	6.330	55.730	1848.71	-31.12	86.62	129.50	40°09'30.812"N	104°45'03.289"W	0.18	
1944.00	6.290	53.240	1935.18	-33.32	92.17	137.28	40°09'30.867"N	104°45'03.189"W	0.32	
2033.00	7.470	49.950	2023.54	-36.31	98.81	145.62	40°09'30.932"N	104°45'03.082"W	1.40	
2121.00	7.550	53.070	2110.79	-39.52	105.97	154.62	40°09'31.003"N	104°45'02.966"W	0.47	
2208.00	8.970	52.610	2196.88	-42.74	113.52	164.58	40°09'31.078"N	104°45'02.837"W	1.63	
2296.00	8.390	47.730	2283.87	-46.73	122.00	174.78	40°09'31.162"N	104°45'02.706"W	1.06	
2385.00	9.880	53.040	2371.74	-50.89	130.96	185.68	40°09'31.250"N	104°45'02.565"W	1.92	
2471.00	11.260	55.560	2456.28	-54.53	140.15	198.51	40°09'31.341"N	104°45'02.400"W	1.69	
2558.00	11.750	57.520	2541.53	-57.90	149.71	212.98	40°09'31.435"N	104°45'02.214"W	0.72	
2646.00	12.290	58.780	2627.61	-60.95	159.37	228.55	40°09'31.531"N	104°45'02.013"W	0.68	
2735.00	12.720	58.210	2714.49	-64.05	169.45	244.98	40°09'31.630"N	104°45'01.802"W	0.50	
2825.00	13.100	60.150	2802.22	-67.04	179.74	262.25	40°09'31.732"N	104°45'01.579"W	0.64	
2914.00	14.160	61.610	2888.71	-69.54	189.94	280.57	40°09'31.833"N	104°45'01.343"W	1.25	
3003.00	14.380	59.050	2974.97	-72.37	200.80	299.63	40°09'31.940"N	104°45'01.098"W	0.75	
3095.00	14.580	57.930	3064.04	-76.07	212.82	319.24	40°09'32.059"N	104°45'00.845"W	0.37	
3185.00	13.010	57.390	3151.45	-79.83	224.30	337.37	40°09'32.172"N	104°45'00.612"W	1.75	
3276.00	13.620	55.670	3240.00	-83.91	235.86	354.85	40°09'32.287"N	104°45'00.387"W	0.80	
3364.00	13.300	59.920	3325.58	-87.46	246.78	372.17	40°09'32.395"N	104°45'00.164"W	1.18	
3453.00	13.130	60.520	3412.23	-90.12	256.88	389.82	40°09'32.494"N	104°44'59.936"W	0.25	
3544.00	13.380	58.820	3500.80	-93.06	267.42	407.83	40°09'32.599"N	104°44'59.704"W	0.51	
3633.00	13.110	57.280	3587.44	-96.49	278.21	425.13	40°09'32.705"N	104°44'59.481"W	0.50	
3721.00	12.700	61.080	3673.21	-99.42	288.28	442.00	40°09'32.805"N	104°44'59.264"W	1.07	
3812.00	13.950	61.630	3761.76	-101.75	298.33	460.40	40°09'32.904"N	104°44'59.027"W	1.38	
3901.00	14.280	59.270	3848.08	-104.51	309.04	479.28	40°09'33.010"N	104°44'58.784"W	0.75	
3989.00	14.540	59.060	3933.31	-107.78	320.26	498.08	40°09'33.121"N	104°44'58.542"W	0.30	
4077.00	14.630	53.310	4018.48	-112.22	332.58	516.47	40°09'33.243"N	104°44'58.305"W	1.65	
4166.00	14.660	57.490	4104.59	-117.03	345.35	534.98	40°09'33.369"N	104°44'58.067"W	1.19	
4256.00	15.270	58.890	4191.54	-120.88	357.59	554.73	40°09'33.490"N	104°44'57.812"W	0.79	
4344.00	17.310	62.030	4276.00	-123.97	369.72	576.22	40°09'33.610"N	104°44'57.536"W	2.52	
4433.00	17.510	62.060	4360.92	-126.62	382.21	599.74	40°09'33.733"N	104°44'57.233"W	0.22	
4521.00	14.830	61.590	4445.43	-129.14	393.77	621.35	40°09'33.847"N	104°44'56.954"W	3.05	
4611.00	13.460	55.780	4532.71	-132.54	405.14	640.14	40°09'33.960"N	104°44'56.712"W	2.19	
4699.00	13.490	49.980	4618.29	-137.80	417.50	656.47	40°09'34.082"N	104°44'56.502"W	1.54	
4788.00	15.410	47.900	4704.47	-144.98	432.11	673.19	40°09'34.226"N	104°44'56.286"W	2.23	
4874.00	16.230	51.100	4787.21	-152.30	447.31	691.03	40°09'34.376"N	104°44'56.057"W	1.39	
4963.00	16.710	51.770	4872.56	-159.39	463.04	710.76	40°09'34.532"N	104°44'55.803"W	0.58	
5051.00	16.480	52.820	4956.90	-166.09	478.41	730.64	40°09'34.684"N	104°44'55.547"W	0.43	
5138.00	14.030	52.700	5040.82	-172.00	492.26	748.86	40°09'34.820"N	104°44'55.312"W	2.82	



# Actual Wellpath Report

CANNON 36N-11HZ AWP

Page 3 of 6



## REFERENCE WELLPATH IDENTIFICATION

Operator	KERR-MCGEE OIL & GAS ONSHORE LP	Slot	SLOT#04 CANNON 36N-11HZ (610'FNL & 676'FWL, SEC.11)
Area	COLORADO	Well	CANNON 36N-11HZ
Field	WELD COUNTY (KERR MCGEE)	Wellbore	CANNON 36N-11HZ AWB
Facility	SEC.11-T2N-R66W		

## WELLPATH DATA (160 stations) † = interpolated/extrapolated station

MD [ft]	Inclination [°]	Azimuth [°]	TVD [ft]	Vert Sect [ft]	North [ft]	East [ft]	Latitude	Longitude	DLS [°/100ft]	Comments
5224.00	13.310	52.500	5124.39	-177.31	504.61	765.01	40°09'34.942"N	104°44'55.104"W	0.84	
5309.00	12.390	53.570	5207.26	-182.12	515.98	780.11	40°09'35.055"N	104°44'54.909"W	1.12	
5398.00	12.770	57.620	5294.12	-186.19	526.92	796.10	40°09'35.163"N	104°44'54.703"W	1.08	
5488.00	12.860	59.110	5381.88	-189.44	537.39	813.09	40°09'35.266"N	104°44'54.485"W	0.38	
5576.00	11.650	57.570	5467.87	-192.48	547.18	829.00	40°09'35.363"N	104°44'54.280"W	1.42	
5665.00	11.440	56.440	5555.07	-195.80	556.88	843.94	40°09'35.459"N	104°44'54.087"W	0.35	
5753.00	11.780	55.880	5641.27	-199.36	566.74	858.65	40°09'35.556"N	104°44'53.898"W	0.41	
5841.00	11.380	55.100	5727.48	-203.11	576.75	873.20	40°09'35.655"N	104°44'53.710"W	0.49	
5929.00	10.520	55.380	5813.88	-206.73	586.28	886.93	40°09'35.749"N	104°44'53.534"W	0.98	
6017.00	10.360	55.190	5900.42	-210.17	595.36	900.04	40°09'35.839"N	104°44'53.365"W	0.19	
6104.00	11.700	54.510	5985.81	-213.89	604.95	913.65	40°09'35.934"N	104°44'53.189"W	1.55	
6194.00	12.160	57.640	6073.87	-217.64	615.32	929.09	40°09'36.036"N	104°44'52.991"W	0.88	
6281.00	13.630	61.760	6158.67	-220.32	625.07	945.86	40°09'36.133"N	104°44'52.775"W	1.99	
6369.00	14.270	59.050	6244.08	-223.04	635.56	964.29	40°09'36.236"N	104°44'52.537"W	1.04	
6456.00	13.640	64.700	6328.52	-225.21	645.46	982.76	40°09'36.334"N	104°44'52.299"W	1.72	
6544.00	14.150	61.190	6413.94	-226.99	655.08	1001.57	40°09'36.429"N	104°44'52.057"W	1.12	
6632.00	14.860	57.810	6499.14	-230.16	666.27	1020.55	40°09'36.540"N	104°44'51.813"W	1.26	
6676.00	15.460	57.440	6541.61	-232.18	672.43	1030.26	40°09'36.601"N	104°44'51.687"W	1.38	
6722.00	14.470	58.580	6586.05	-234.20	678.73	1040.34	40°09'36.663"N	104°44'51.558"W	2.25	
6766.00	13.860	77.590	6628.73	-234.17	682.73	1050.18	40°09'36.703"N	104°44'51.431"W	10.62	
6810.00	15.530	98.230	6671.32	-230.28	683.02	1061.16	40°09'36.705"N	104°44'51.289"W	12.42	
6854.00	16.960	117.810	6713.59	-222.36	679.18	1072.68	40°09'36.667"N	104°44'51.141"W	12.80	
6898.00	19.760	131.570	6755.37	-210.76	671.24	1083.93	40°09'36.589"N	104°44'50.996"W	11.69	
6943.00	23.350	144.120	6797.24	-195.25	658.96	1094.85	40°09'36.468"N	104°44'50.856"W	12.95	
6987.00	26.390	153.660	6837.17	-177.01	643.12	1104.31	40°09'36.311"N	104°44'50.734"W	11.42	
7031.00	30.050	160.740	6875.94	-156.25	623.95	1112.29	40°09'36.122"N	104°44'50.631"W	11.26	
7074.00	34.230	164.120	6912.35	-133.46	602.14	1119.15	40°09'35.906"N	104°44'50.543"W	10.58	
7117.00	38.460	165.350	6946.98	-108.18	577.56	1125.85	40°09'35.663"N	104°44'50.456"W	9.98	
7161.00	42.360	166.160	6980.47	-79.94	549.91	1132.86	40°09'35.390"N	104°44'50.366"W	8.94	
7205.00	46.540	166.690	7011.88	-49.49	519.97	1140.08	40°09'35.094"N	104°44'50.273"W	9.54	
7249.00	49.870	166.680	7041.20	-17.09	488.05	1147.63	40°09'34.779"N	104°44'50.176"W	7.57	
7293.00	52.830	168.160	7068.67	16.78	454.52	1155.11	40°09'34.447"N	104°44'50.080"W	7.22	
7338.00	56.230	169.030	7094.78	52.77	418.60	1162.35	40°09'34.092"N	104°44'49.986"W	7.72	
7383.00	59.090	169.310	7118.85	90.03	381.26	1169.49	40°09'33.723"N	104°44'49.894"W	6.38	
7427.00	59.400	168.920	7141.35	127.10	344.13	1176.63	40°09'33.356"N	104°44'49.802"W	1.04	
7471.00	60.810	168.750	7163.28	164.53	306.70	1184.02	40°09'32.987"N	104°44'49.707"W	3.22	
7515.00	65.570	169.170	7183.12	203.04	268.17	1191.53	40°09'32.606"N	104°44'49.611"W	10.85	
7560.00	68.450	170.030	7200.70	243.58	227.43	1199.01	40°09'32.203"N	104°44'49.514"W	6.64	
7605.00	69.490	170.080	7216.85	284.61	186.06	1206.26	40°09'31.794"N	104°44'49.421"W	2.31	
7648.00	73.570	168.650	7230.47	324.56	145.98	1213.79	40°09'31.398"N	104°44'49.324"W	10.00	
7691.00	78.080	168.560	7240.99	365.49	105.13	1222.03	40°09'30.995"N	104°44'49.218"W	10.49	
7735.00	82.370	169.530	7248.46	408.00	62.56	1230.26	40°09'30.574"N	104°44'49.112"W	9.99	
7779.00	85.430	170.510	7253.14	450.74	19.48	1237.84	40°09'30.148"N	104°44'49.014"W	7.30	
7814.00†	86.470	171.225	7255.61	484.75	-14.99	1243.38	40°09'29.808"N	104°44'48.943"W	3.60	7" Casing Point
7852.00	87.600	172.000	7257.58	521.59	-52.53	1248.92	40°09'29.437"N	104°44'48.872"W	3.60	
7941.00	87.720	172.320	7261.21	607.71	-140.62	1261.05	40°09'28.566"N	104°44'48.716"W	0.38	
8029.00	88.070	173.150	7264.44	692.66	-227.86	1272.17	40°09'27.704"N	104°44'48.572"W	1.02	
8115.00	87.570	171.780	7267.71	775.78	-313.05	1283.44	40°09'26.862"N	104°44'48.427"W	1.69	
8203.00	86.740	171.920	7272.08	861.02	-400.05	1295.90	40°09'26.002"N	104°44'48.267"W	0.96	
8291.00	87.100	172.000	7276.81	946.20	-487.06	1308.19	40°09'25.142"N	104°44'48.109"W	0.42	
8381.00	88.130	171.430	7280.55	1033.46	-576.05	1321.15	40°09'24.263"N	104°44'47.942"W	1.31	
8467.00	88.210	170.900	7283.30	1117.07	-660.98	1334.35	40°09'23.424"N	104°44'47.772"W	0.62	
8555.00	90.220	172.580	7284.51	1202.45	-748.05	1346.99	40°09'22.563"N	104°44'47.609"W	2.98	
8643.00	90.830	171.280	7283.70	1287.76	-835.18	1359.34	40°09'21.702"N	104°44'47.450"W	1.63	
8730.00	90.030	172.470	7283.05	1372.12	-921.30	1371.64	40°09'20.851"N	104°44'47.292"W	1.65	
8816.00	89.510	171.740	7283.39	1455.43	-1006.48	1383.45	40°09'20.010"N	104°44'47.140"W	1.04	
8905.00	90.590	172.470	7283.31	1541.65	-1094.64	1395.67	40°09'19.138"N	104°44'46.982"W	1.46	
8993.00	91.110	173.410	7282.01	1626.56	-1181.96	1406.49	40°09'18.275"N	104°44'46.843"W	1.22	
9081.00	90.860	174.320	7280.50	1711.09	-1269.44	1415.89	40°09'17.411"N	104°44'46.722"W	1.07	
9170.00	91.170	175.510	7278.92	1796.11	-1358.07	1423.78	40°09'16.535"N	104°44'46.621"W	1.38	



# Actual Wellpath Report

CANNON 36N-11HZ AWP

Page 4 of 6



## REFERENCE WELLPATH IDENTIFICATION

Operator	KERR-MCGEE OIL & GAS ONSHORE LP	Slot	SLOT#04 CANNON 36N-11HZ (610'FNL & 676'FWL, SEC.11)
Area	COLORADO	Well	CANNON 36N-11HZ
Field	WELD COUNTY (KERR MCGEE)	Wellbore	CANNON 36N-11HZ AWB
Facility	SEC.11-T2N-R66W		

## WELLPATH DATA (160 stations)

MD [ft]	Inclination [°]	Azimuth [°]	TVD [ft]	Vert Sect [ft]	North [ft]	East [ft]	Latitude	Longitude	DLS [°/100ft]	Comments
9258.00	91.660	175.410	7276.75	1879.91	-1445.77	1430.74	40°09'15.668"N	104°44'46.531"W	0.57	
9346.00	90.150	174.320	7275.36	1964.00	-1533.40	1438.62	40°09'14.802"N	104°44'46.430"W	2.12	
9435.00	86.490	174.480	7277.97	2049.22	-1621.92	1447.30	40°09'13.928"N	104°44'46.318"W	4.12	
9524.00	85.810	173.580	7283.94	2134.45	-1710.24	1456.53	40°09'13.055"N	104°44'46.199"W	1.27	
9613.00	85.620	172.970	7290.59	2219.96	-1798.38	1466.92	40°09'12.184"N	104°44'46.065"W	0.72	
9701.00	84.510	172.100	7298.16	2304.73	-1885.31	1478.31	40°09'11.325"N	104°44'45.919"W	1.60	
9790.00	84.910	174.160	7306.37	2390.17	-1973.29	1488.91	40°09'10.455"N	104°44'45.782"W	2.35	
9878.00	87.110	174.390	7312.49	2474.33	-2060.63	1497.67	40°09'09.592"N	104°44'45.669"W	2.51	
9966.00	89.390	175.350	7315.18	2558.38	-2148.23	1505.53	40°09'08.727"N	104°44'45.568"W	2.81	
10054.00	89.910	174.100	7315.72	2642.54	-2235.86	1513.62	40°09'07.861"N	104°44'45.464"W	1.54	
10143.00	90.890	173.760	7315.09	2728.01	-2324.35	1523.03	40°09'06.986"N	104°44'45.343"W	1.17	
10233.00	88.890	171.810	7315.27	2814.92	-2413.63	1534.34	40°09'06.104"N	104°44'45.198"W	3.10	
10321.00	90.430	171.990	7315.79	2900.24	-2500.75	1546.74	40°09'05.243"N	104°44'45.038"W	1.76	
10365.00	91.600	171.890	7315.01	2942.89	-2544.31	1552.90	40°09'04.813"N	104°44'44.959"W	2.67	
10409.00	91.170	171.480	7313.95	2985.58	-2587.83	1559.27	40°09'04.382"N	104°44'44.877"W	1.35	
10452.00	91.720	171.170	7312.86	3027.37	-2630.33	1565.75	40°09'03.962"N	104°44'44.793"W	1.47	
10496.00	92.770	171.280	7311.14	3070.12	-2673.78	1572.46	40°09'03.533"N	104°44'44.707"W	2.40	
10539.00	93.140	171.030	7308.92	3111.90	-2716.21	1579.06	40°09'03.114"N	104°44'44.622"W	1.04	
10583.00	93.150	170.260	7306.51	3154.72	-2759.56	1586.20	40°09'02.685"N	104°44'44.530"W	1.75	
10628.00	92.620	171.840	7304.24	3198.46	-2803.95	1593.19	40°09'02.247"N	104°44'44.440"W	3.70	
10673.00	92.520	171.530	7302.22	3242.09	-2848.44	1599.69	40°09'01.807"N	104°44'44.356"W	0.72	
10717.00	91.390	171.940	7300.72	3284.76	-2891.95	1606.01	40°09'01.377"N	104°44'44.275"W	2.73	
10761.00	90.950	171.620	7299.83	3327.43	-2935.49	1612.30	40°09'00.947"N	104°44'44.194"W	1.24	
10804.00	90.640	171.310	7299.23	3369.20	-2978.01	1618.68	40°09'00.527"N	104°44'44.112"W	1.02	
10848.00	88.800	175.190	7299.44	3411.59	-3021.69	1623.86	40°09'00.095"N	104°44'44.045"W	9.76	
10936.00	87.510	175.550	7302.28	3495.42	-3109.36	1630.95	40°08'59.229"N	104°44'43.954"W	1.52	
11021.00	87.870	174.980	7305.70	3576.41	-3194.00	1637.97	40°08'58.392"N	104°44'43.864"W	0.79	
11107.00	89.200	174.970	7307.90	3658.52	-3279.64	1645.50	40°08'57.546"N	104°44'43.767"W	1.55	
11192.00	90.520	175.630	7308.11	3739.56	-3364.35	1652.46	40°08'56.709"N	104°44'43.677"W	1.74	
11277.00	90.620	174.670	7307.26	3820.66	-3449.04	1659.65	40°08'55.872"N	104°44'43.585"W	1.14	
11362.00	90.770	174.550	7306.23	3902.00	-3533.66	1667.63	40°08'55.036"N	104°44'43.482"W	0.23	
11447.00	90.770	173.930	7305.09	3983.50	-3618.22	1676.16	40°08'54.200"N	104°44'43.372"W	0.73	
11533.00	92.040	173.360	7302.98	4066.18	-3703.67	1685.68	40°08'53.356"N	104°44'43.250"W	1.62	
11618.00	89.450	175.040	7301.88	4147.68	-3788.21	1694.26	40°08'52.520"N	104°44'43.139"W	3.63	
11703.00	88.800	174.160	7303.17	4229.02	-3872.83	1702.26	40°08'51.684"N	104°44'43.036"W	1.29	
11788.00	88.650	173.450	7305.07	4310.69	-3957.31	1711.43	40°08'50.849"N	104°44'42.918"W	0.85	
11874.00	88.980	172.630	7306.84	4393.62	-4042.65	1721.85	40°08'50.006"N	104°44'42.784"W	1.03	
11959.00	88.460	171.750	7308.74	4475.91	-4126.84	1733.40	40°08'49.174"N	104°44'42.636"W	1.20	
11968.00	88.340	171.910	7308.99	4484.64	-4135.75	1734.68	40°08'49.086"N	104°44'42.619"W	2.22	Last BHI MWD Survey
12028.00	88.340	171.910	7310.73	4542.79	-4195.13	1743.12	40°08'48.499"N	104°44'42.510"W	0.00	Projection to Bit

## HOLE & CASING SECTIONS - Ref Wellbore: CANNON 36N-11HZ AWB Ref Wellpath: CANNON 36N-11HZ AWP

String/Diameter	Start MD [ft]	End MD [ft]	Interval [ft]	Start TVD [ft]	End TVD [ft]	Start N/S [ft]	Start E/W [ft]	End N/S [ft]	End E/W [ft]
13.5in Open Hole	17.00	942.00	925.00	17.00	938.76	0.00	0.00	34.16	49.34
9.625in Casing Surface	17.00	942.00	925.00	17.00	938.76	0.00	0.00	34.16	49.34
8.75in Open Hole	942.00	7824.00	6882.00	938.76	7256.20	34.16	49.34	-24.86	1244.89
7in Casing Intermediate	17.00	7814.00	7797.00	17.00	7255.61	0.00	0.00	-14.99	1243.38
6.125in Open Hole	7814.00	12028.00	4214.00	7255.61	7310.73	-14.99	1243.38	-4195.13	1743.12



# Actual Wellpath Report

CANNON 36N-11HZ AWP

Page 5 of 6



## REFERENCE WELLPATH IDENTIFICATION

Operator	KERR-MCGEE OIL & GAS ONSHORE LP	Slot	SLOT#04 CANNON 36N-11HZ (610'FNL & 676'FWL, SEC.11)
Area	COLORADO	Well	CANNON 36N-11HZ
Field	WELD COUNTY (KERR MCGEE)	Wellbore	CANNON 36N-11HZ AWB
Facility	SEC.11-T2N-R66W		

## TARGETS

Name	MD [ft]	TVD [ft]	North [ft]	East [ft]	Grid East [US ft]	Grid North [US ft]	Latitude	Longitude	Shape
CANNON PAD SECTION LINES		-15.00	-4127.15	4074.07	3213348.65	1297310.41	40°08'49.168"N	104°44'12.494"W	polygon
CANNON 36N-11HZ BHL ON PLAT (460'FSL & 2400'FWL, REV-1)		7289.00	-4201.09	1719.00	3210994.39	1297216.59	40°08'48.440"N	104°44'42.821"W	point
CANNON PAD HARDLINES (460' SETBACKS)		7310.00	-4127.15	4074.07	3213348.65	1297310.41	40°08'49.168"N	104°44'12.494"W	polygon

## WELLPATH COMPOSITION - Ref Wellbore: CANNON 36N-11HZ AWB Ref Wellpath: CANNON 36N-11HZ AWP

Start MD [ft]	End MD [ft]	Positional Uncertainty Model	Log Name/Comment	Wellbore
17.00	890.00	NaviTrak (MagCorr)	BHI MWD SURVEYS 13 1/2" HOLE <143-890>	CANNON 36N-11HZ AWB
890.00	7779.00	NaviTrak (Standard)	BHI MWD SURVEYS 8 3/4" <963-7779>	CANNON 36N-11HZ AWB
7779.00	11968.00	OnTrak (MagCorr)	BHI MWD SURVEYS 6 1/8 HOLE <7852-11968>	CANNON 36N-11HZ AWB
11968.00	12028.00	Blind Drilling (std)	Projection to bit	CANNON 36N-11HZ AWB



# Actual Wellpath Report

CANNON 36N-11HZ AWP

Page 6 of 6



## REFERENCE WELLPATH IDENTIFICATION

Operator	KERR-MCGEE OIL & GAS ONSHORE LP	Slot	SLOT#04 CANNON 36N-11HZ (610'FNL & 676'FWL, SEC.11)
Area	COLORADO	Well	CANNON 36N-11HZ
Field	WELD COUNTY (KERR MCGEE)	Wellbore	CANNON 36N-11HZ AWB
Facility	SEC.11-T2N-R66W		

## WELLPATH COMMENTS

MD [ft]	Inclination [°]	Azimuth [°]	TVD [ft]	Comment
143.00	0.660	227.930	143.00	Begin BHI MWD Surveys
7814.00	86.470	171.225	7255.61	7" Casing Point
11968.00	88.340	171.910	7308.99	Last BHI MWD Survey
12028.00	88.340	171.910	7310.73	Projection to Bit