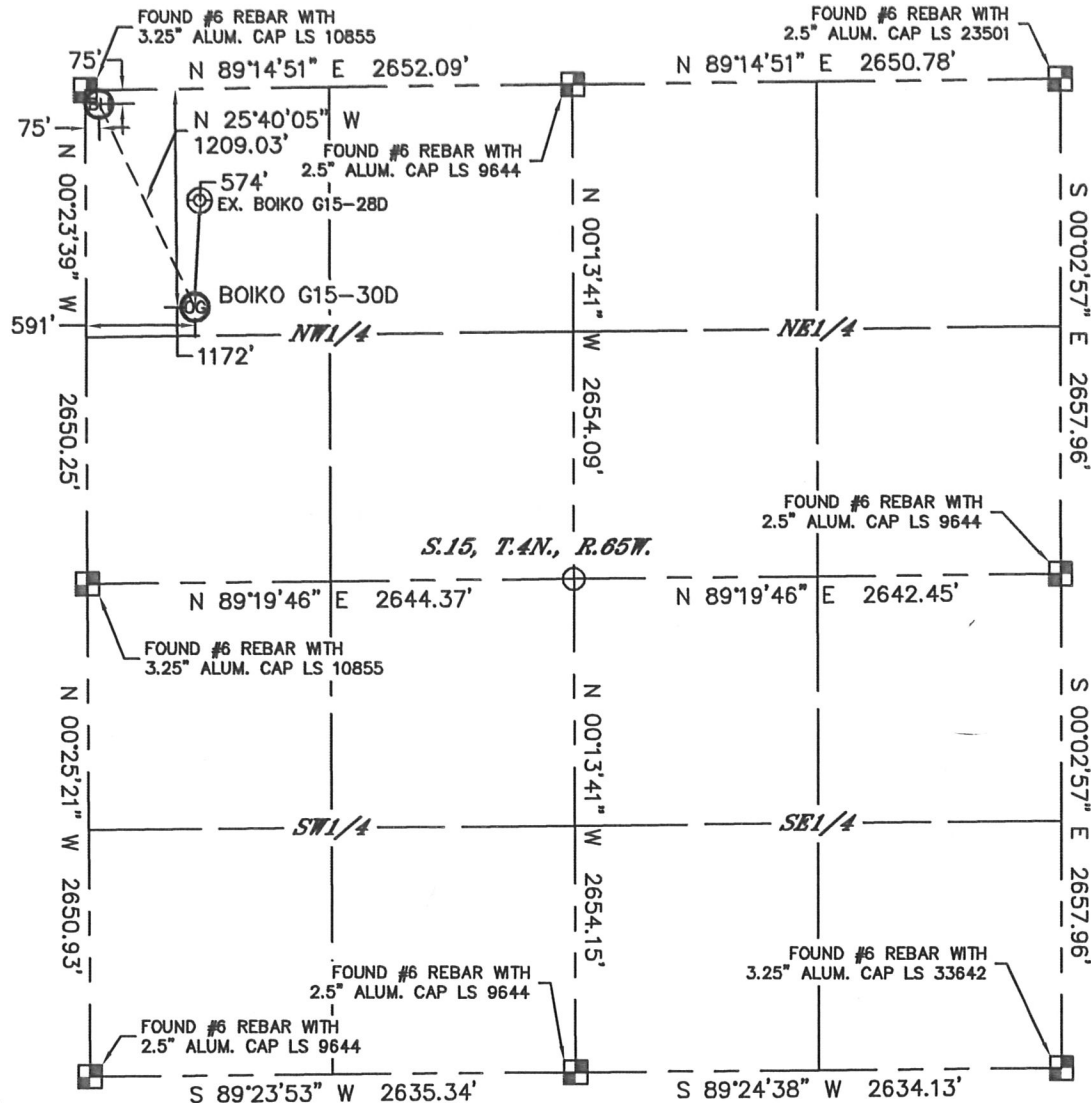


Lat40°, Inc. 1635 Foxtrail Drive, Suite 325 Loveland, CO 970-776-3321

WELL LOCATION CERTIFICATE

THIS MAP DOES NOT REPRESENT A BOUNDARY SURVEY

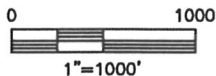
SECTION: 15
TOWNSHIP: 4N
RANGE: 65W



In accordance with a request from CJ Pietri with Noble Energy Inc.

Lat40°, Inc. has determined the surface location of the BOIKO G15-30D to be 1172' from the NORTH line and 591' from the WEST line and the bottom hole to be 75' from the NORTH line and 75' from the WEST line as measured at right angles from the section lines of Section 15, Township 4 North, Range 65 West of the Sixth Principal Meridian, County of Weld, State of Colorado.

I hereby state that this Well Location Certificate was prepared by me, or under my direct supervision, that the fieldwork was completed on 2/6/2012, for and on behalf of Noble Energy Inc. That this is not a Land Survey Plat or an Improvement Survey Plat, and that it is not to be relied upon for establishment of fence, building, or other future Improvement lines.





NOTE:

- 1) Bearings shown are Grid Bearings of the Colorado State Plane Coordinate System, North Zone, North American Datum 1983/2007. The lineal dimensions as contained herein are based upon the "U.S. Survey Foot."
- 2) Ground elevations are based on an observed GPS elevation (NAVD 1988 DATUM).
- 3) NEAREST EXISTING WELL: BOIKO G15-28D, 574'
- 4) IMPROVEMENTS: See LOCATION DRAWING for all visible Improvements within 400' of disturbed area.
- 5) SURFACE USE: CROP FIELD
- 6) INSTRUMENT OPERATOR: ADAM KELLY

NOTE

According to Colorado law, you must commence any legal action based upon any defect in this W.L.C. within three years after you discover such defect. In no event, may any action based upon any defect in this survey be commenced more than ten years after the date of the certificate shown hereon. (13-80-105 C.R.S.)

LEGEND

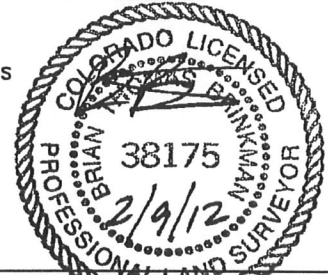
-  = ALIQUOT MONUMENT AS DESCRIBED
-  = CALCULATED POSITION

SURFACE LOCATION

LAT: 40.31650N
LONG: 104.65649W
PDOP: 2.6
ELEV: 4737'
1/4,1/4: NW1/4NW1/4
NEAREST PROPERTY LINE: 154' S

BOTTOM HOLE

LAT: 40.31951N
LONG: 104.65833W



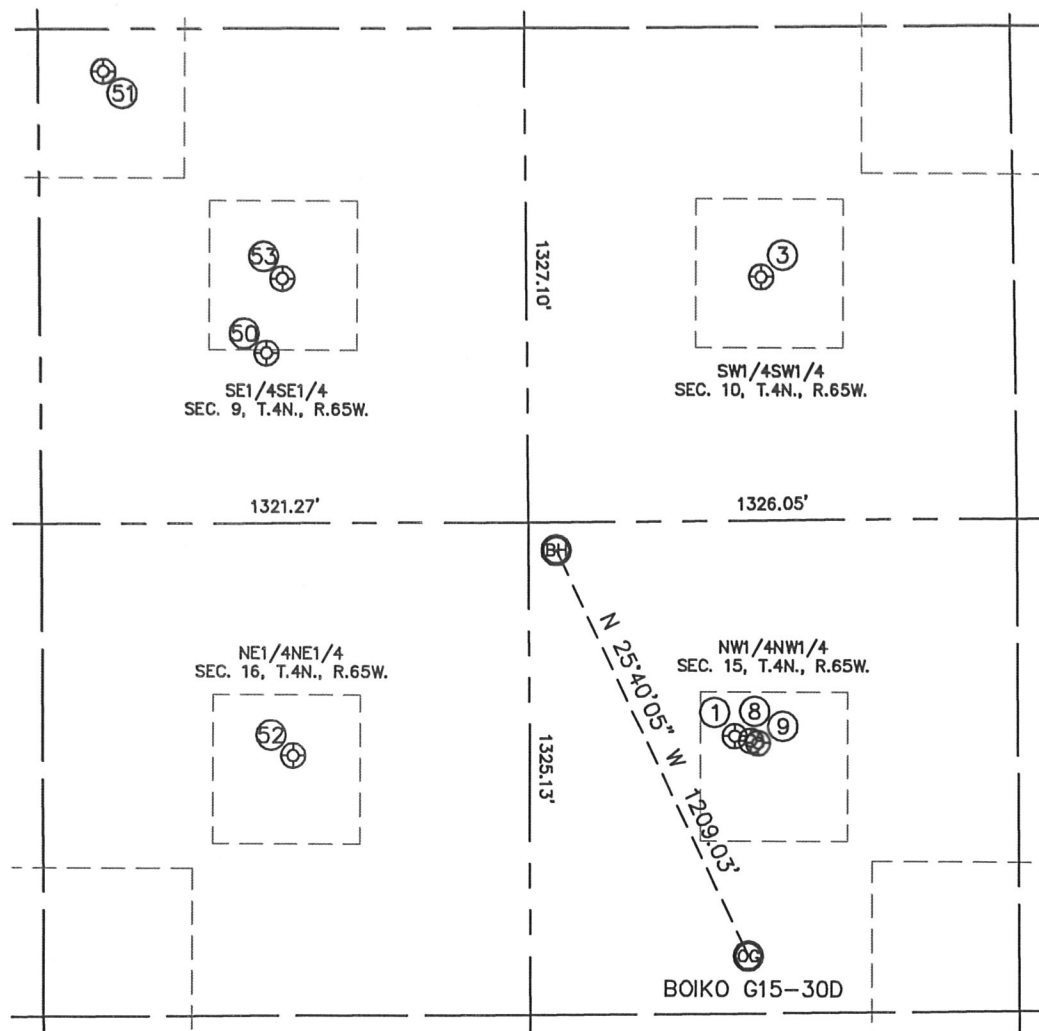
Brian T. Brinkman—On behalf of Lat40°, Inc.

Colorado Licensed Professional Land Surveyor No. 38175
DATE: 2/6/2012
PROJECT#: 2011048

SITE SKETCH

BOIKO G15-30D

SECTION: 15
TOWNSHIP: 4N
RANGE: 65W



①
LEE PM G15-04
NW1/4NW1/4
579' FNL
557' FWL
LAT-40.31813°N
LONG-104.65661°W
PDOP: 2.5
ELEV: 4724'

③
LEE #1-10
SW1/4SW1/4
654' FSL
638' FWL
LAT-40.32151°N
LONG-104.65632°W
PDOP: 1.5
ELEV: 4708'

⑧
BOIKO PC G15-29D
NW1/4NW1/4
592' FNL
600' FWL
LAT-40.31809°N
LONG-104.65645°W
PDOP: 1.8
ELEV: 4724'

⑨
BOIKO PC G15-28D
NW1/4NW1/4
598' FNL
620' FWL
LAT-40.31807°N
LONG-104.65638°W
PDOP: 1.4
ELEV: 4724'

⑤0
BETZ PC G10-33D
SE1/4SE1/4
457' FSL
707' FEL
LAT-40.32097°N
LONG-104.66114°W
PDOP: 1.5
ELEV: 4717'

⑤1
BETZ PC G09-23
SE1/4SE1/4
1214' FSL
1144' FEL
LAT-40.32305°N
LONG-104.66271°W
PDOP: 1.5
ELEV: 4723'

⑤2
WILLMAN H 41-16
NE1/4NE1/4
625' FNL
641' FEL
LAT-40.31800°N
LONG-104.66090°W
PDOP: 1.4
ELEV: 4739'

⑤3
BETZ 9-44
SE1/4SE1/4
656' FSL
662' FEL
LAT-40.32152°N
LONG-104.66098°W
PDOP: 1.4
ELEV: 4716'

