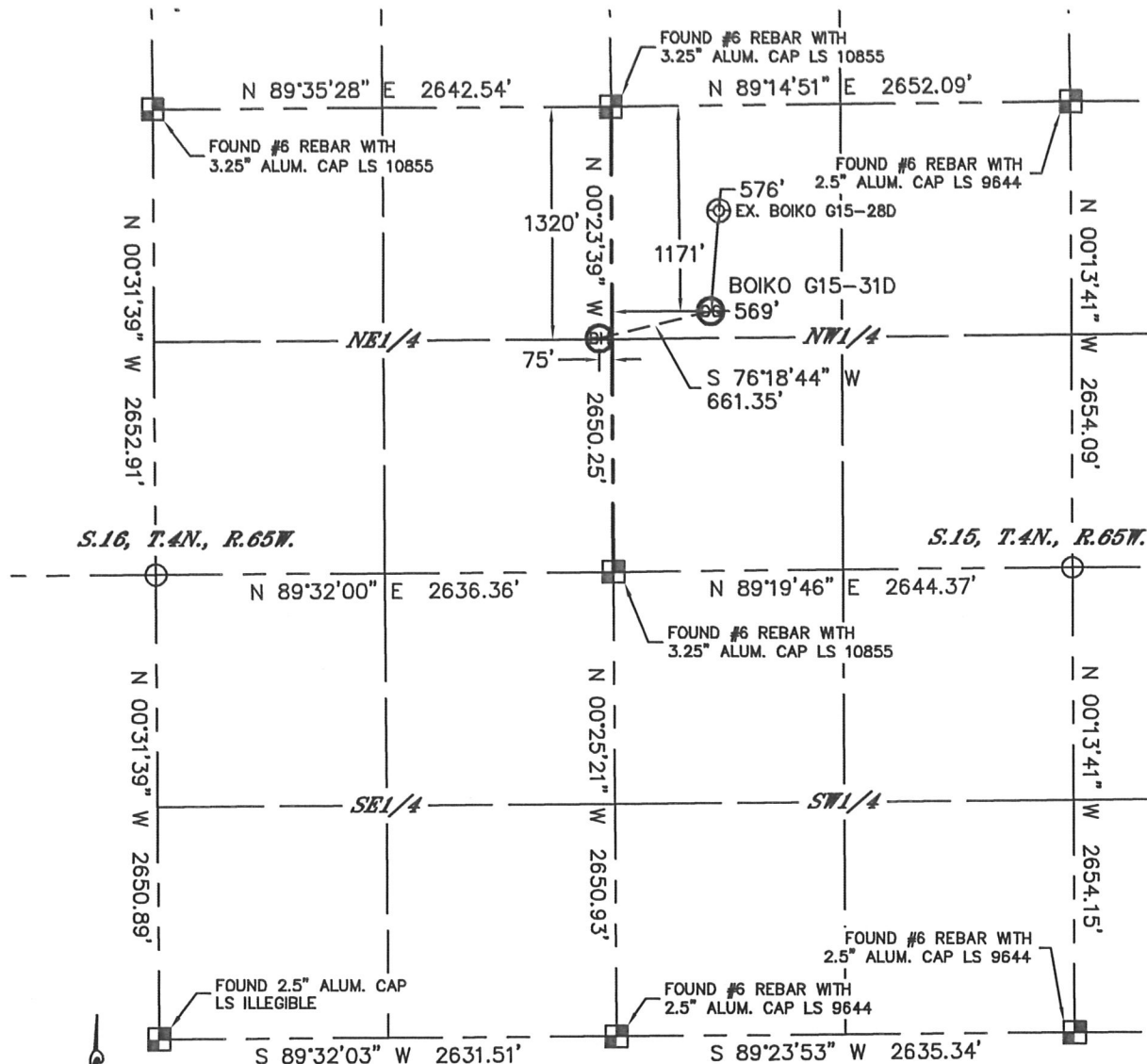


# WELL LOCATION CERTIFICATE

THIS MAP DOES NOT REPRESENT A BOUNDARY SURVEY

SECTION: 15  
TOWNSHIP: 4N  
RANGE: 65W



In accordance with a request from CJ Pietri with Noble Energy Inc., Lat40°, Inc. has determined the surface location of the BOIKO G15-31D to be 1171' from the NORTH line and 569' from the WEST line as measured at right angles from the section lines of Section 15, Township 4 North, Range 65 West and the bottom hole to be 1320' from the NORTH line and 75' from the EAST line as measured at right angles from the section lines of Section 16, Township 4 North, Range 65 West of the Sixth Principal Meridian, County of Weld, State of Colorado.

I hereby state that this Well Location Certificate was prepared by me, or under my direct supervision, that the fieldwork was completed on 2/6/2012, for and on behalf of Noble Energy Inc. That this is not a Land Survey Plat or an Improvement Survey Plat, and that it is not to be relied upon for establishment of fence, building, or other future improvement lines.

## NOTE:

- 1) Bearings shown are Grid Bearings of the Colorado State Plane Coordinate System, North Zone, North American Datum 1983/2007. The lineal dimensions as contained herein are based upon the "U.S. Survey Foot."
- 2) Ground elevations are based on an observed GPS elevation (NAVD 1988 DATUM).
- 3) NEAREST EXISTING WELL: BOIKO G15-28D, 576'
- 4) IMPROVEMENTS: See LOCATION DRAWING for all visible improvements within 400' of disturbed area.
- 5) SURFACE USE: CROP FIELD
- 6) INSTRUMENT OPERATOR: ADAM KELLY

## NOTE

According to Colorado law, you must commence any legal action based upon any defect in this W.L.C. within three years after you discover such defect. In no event, may any action based upon any defect in this survey be commenced more than ten years after the date of the certificate shown hereon. (13-80-105 C.R.S.)

## LEGEND

- = ALIQUOT MONUMENT AS DESCRIBED
- = CALCULATED POSITION

## SURFACE LOCATION

LAT: 40.31650°N  
LONG: 104.65657°W  
PDOP: 2.0  
ELEV: 4738'  
1/4, 1/4: NW1/4NW1/4  
NEAREST PROPERTY LINE: 154' S

## BOTTOM HOLE

LAT: 40.31609°N  
LONG: 104.65888°W



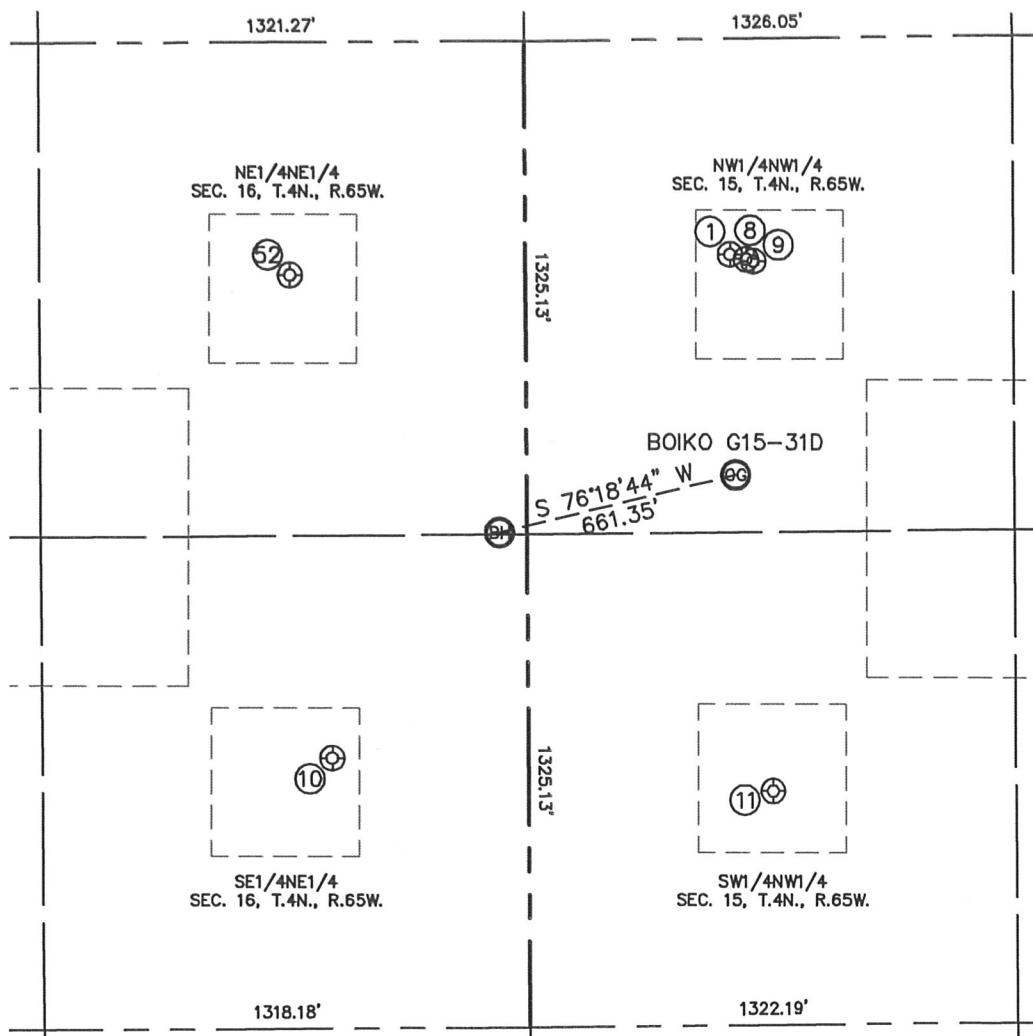
Brian T. Brinkman—On behalf of Lat40°, Inc.

Colorado Licensed Professional Land Surveyor No. 38175  
DATE: 2/6/2012  
PROJECT#: 2011048

# SITE SKETCH

BOIKO G15-31D

SECTION: 15  
TOWNSHIP: 4N  
RANGE: 65W



①

LEE PM G15-04  
NW1/4NW1/4  
579' FNL  
557' FWL  
LAT-40.31813°N  
LONG-104.65661°W  
PDOP: 2.5  
ELEV: 4724'

⑧

BOIKO PC G15-29D  
NW1/4NW1/4  
592' FNL  
600' FWL  
LAT-40.31809°N  
LONG-104.65645°W  
PDOP: 1.8  
ELEV: 4724'

⑨

BOIKO PC G15-28D  
NW1/4NW1/4  
598' FNL  
620' FWL  
LAT-40.31807°N  
LONG-104.65638°W  
PDOP: 1.4  
ELEV: 4724'

⑩

WILLMAN 42-16  
SE1/4NE1/4  
1924' FNL  
532' FEL  
LAT-40.31443°N  
LONG-104.66052°W  
PDOP: 1.1  
ELEV: 4766'

⑪

SWINNEY 2  
SW1/4NW1/4  
2022' FNL  
664' FWL  
LAT-40.31417°N  
LONG-104.65623°W  
PDOP: 1.1  
ELEV: 4741'

⑫

WILLMAN H 41-16  
NE1/4NE1/4  
625' FNL  
641' FEL  
LAT-40.31800°N  
LONG-104.66090°W  
PDOP: 1.4  
ELEV: 4739'

