

# HALLIBURTON

## Cementing Job Summary

*The Road to Excellence Starts with Safety*

Sold To #: 300721	Ship To #: 2878358	Quote #:	Sales Order #: 8469958
Customer: WILLIAMS PRODUCTION RMT INC - EBUS		Customer Rep: Moore, Frank	
Well Name: RWF	Well #: 44-31	API/UWI #: 05-045-19787	
Field: Rulison	City (SAP): RIFLE	County/Parish: Garfield	State: Colorado
Lat: N 39.475 deg. OR N 39 deg. 28 min. 30.673 secs.		Long: W 107.929 deg. OR W -108 deg. 4 min. 14.39 secs.	
Contractor: NABORS 573	Rlg/Platform Name/Num: NAB 573		
Job Purpose: Cement Surface Casing			
Well Type: Development Well		Job Type: Cement Surface Casing	
Sales Person: KOHL, KYLE	Srvc Supervisor: SLAUGHTER, JESSE	MBU ID Emp #: 454315	

### Job Personnel

HES Emp Name	Exp Hrs	Emp #	HES Emp Name	Exp Hrs	Emp #	HES Emp Name	Exp Hrs	Emp #
ANDERSON, ADAM S	13	456683	BATH, KYLE Thomas	13	477632	O'TOOLE, SHAWN Louis	13	496661
SLAUGHTER, JESSE Dean	13	454315	SPARKS, CLIFFORD Paul	13	502476	YOUNG, JEREMY R	13	418013

### Equipment

HES Unit #	Distance-1 way	HES Unit #	Distance-1 way	HES Unit #	Distance-1 way	HES Unit #	Distance-1 way
10744648C	60 mile	10784080	60 mile	10804579	60 mile	10867304	60 mile
10998054	60 mile	10998508	60 mile	11259881	60 mile		

### Job Hours

Date	On Location Hours	Operating Hours	Date	On Location Hours	Operating Hours	Date	On Location Hours	Operating Hours
09-24-2011	1.5	0	09-25-2011	11.5	3			

**TOTAL** Total is the sum of each column separately

### Job

Formation Name	Formation Depth (MD)	Top	Bottom	Job depth MD	Job Depth TVD	Water Depth	Wk Ht Above Floor	Perforation Depth (MD)	From	To
				2512. ft	2512. ft		7. ft			

### Job Times

Date	Time	Time Zone
24 - Sep - 2011	18:30	MST
24 - Sep - 2011	22:30	MST
25 - Sep - 2011	08:55	MST
25 - Sep - 2011	10:25	MST
25 - Sep - 2011	11:30	MST

### Well Data

Description	New / Used	Max pressure psig	Size in	ID in	Weight lbm/ft	Thread	Grade	Top MD ft	Bottom MD ft	Top TVD ft	Bottom TVD ft
OPEN HOLE				13.5				.	2615.		
SURFACE CASING	Unknown		9.625	9.001	32.3			.	2556.		

### Sales/Rental/3<sup>rd</sup> Party (HES)

Description	Qty	Qty uom	Depth	Supplier
PLUG,CMTG,TOP,9 5/8,HWE,8.16 MIN/9.06 MA	1	EA		

### Tools and Accessories

Type	Size	Qty	Make	Depth	Type	Size	Qty	Make	Depth	Type	Size	Qty	Make
Guide Shoe					Packer					Top Plug	9.625	1	HES
Float Shoe					Bridge Plug					Bottom Plug			
Float Collar					Retainer					SSR plug set			
Insert Float										Plug Container	9.625	1	HES
Stage Tool										Centralizers			

### Miscellaneous Materials

Gelling Agt	Conc	Surfactant	Conc	Acid Type	Qty	Conc	%
Treatment Fld	Conc	Inhibitor	Conc	Sand Type	Size		

### Fluid Data

Stage/Plug #: 1

# HALLIBURTON

## Cementing Job Summary

Fluid #	Stage Type	Fluid Name	Qty	Qty uom	Mixing Density lbm/gal	Yield ft <sup>3</sup> /sk	Mix Fluid Gal/sk	Rate bbl/min	Total Mix Fluid Gal/sk
1	Water Spacer	FRESH WATER	20.00	bbl	8.33	.0	.0	4	
2	Lead Cement	VERSACEM (TM) SYSTEM (452010)	480.0	sacks	12.3	2.38	13.75	8	13.75
		13.75 Gal FRESH WATER							
3	Tail Cement	VERSACEM (TM) SYSTEM (452010)	160.0	sacks	12.8	2.11	11.76	8	11.76
		11.76 Gal FRESH WATER							
4	Displacement Fluid	FRESH WATER	197.80	bbl	8.33	.0	.0	10	
<b>Calculated Values</b>		<b>Pressures</b>		<b>Volumes</b>					
Displacement	197.8	Shut In: Instant		Lost Returns	NO	Cement Slurry	263.6	Pad	
Top Of Cement	SURFACE	5 Min		Cement Returns	70	Actual Displacement	197.8	Treatment	
Frac Gradient		15 Min		Spacers	20	Load and Breakdown		Total Job	481
<b>Rates</b>									
Circulating	8	Mixing	8	Displacement	10	Avg. Job	9		
Cement Left In Pipe	Amount	43.2 ft	Reason	Shoe Joint					
Frac Ring # 1 @	ID	Frac ring # 2 @	ID	Frac Ring # 3 @	ID	Frac Ring # 4 @	ID		
The Information Stated Herein Is Correct				Customer Representative Signature					

# HALLIBURTON

## Cementing Job Log

*The Road to Excellence Starts with Safety*

Sold To #: 300721	Ship To #: 2878358	Quote #:	Sales Order #: 8469958
Customer: WILLIAMS PRODUCTION RMT INC - EBUS	Customer Rep: Moore, Frank		
Well Name: RWF	Well #: 44-31	API/UWI #: 05-045-19787	
Field: Rulison	City (SAP): RIFLE	County/Parish: Garfield	State: Colorado
Legal Description:			
Lat: N 39.475 deg. OR N 39 deg. 28 min. 30.673 secs.		Long: W 107.929 deg. OR W -108 deg. 4 min. 14.39 secs.	
Contractor: NABORS 573	Rig/Platform Name/Num: NAB 573		
Job Purpose: Cement Surface Casing			Ticket Amount:
Well Type: Development Well		Job Type: Cement Surface Casing	
Sales Person: KOHL, KYLE	Srv Supervisor: SLAUGHTER, JESSE	MBU ID Emp #: 454315	

Activity Description	Date/Time	Cht #	Rate bbl/min	Volume bbl		Pressure psig		Comments
				Stage	Total	Tubing	Casing	
Call Out	09/24/2011 18:30							TD 2615 FT, TP 2556 FT, SHOE 43.21 FT, CSG 9 5/8 IN 32.2 LB/FT, HOLE 13 1/2 IN, MUD WT 11 PPG
Pre-Convoy Safety Meeting	09/24/2011 20:50							WITH ALL HES PERSONNEL
Crew Leave Yard	09/24/2011 21:00							
Arrive At Loc	09/24/2011 22:30							RIG WAS RUNNING CASING UPON HES ARRIVAL
Assessment Of Location Safety Meeting	09/25/2011 06:20							WITH ALL HES PERSONNEL
Other	09/25/2011 06:30							SPOT EQUIPMENT
Pre-Rig Up Safety Meeting	09/25/2011 06:50							WITH ALL HES PERSONNEL
Rig-Up Equipment	09/25/2011 07:00							
Pre-Job Safety Meeting	09/25/2011 08:45							WITH ALL PERSONNEL ON LOCATION
Start Job	09/25/2011 08:55							
Other	09/25/2011 08:55		2	2			91.0	FILL LINES WITH FRESH WATER
Test Lines	09/25/2011 08:57							TESTED LINES TO 3484 PSI PRESSURE HOLDING
Pump Spacer 1	09/25/2011 09:04		4	20			108.0	FRESH WATER
Pump Lead Cement	09/25/2011 09:13		8	203.5			290.0	480 SKS AT 12.3 PPG, 2.38 FT <sup>3</sup> /SK, 13.75 GAL/SK
Activity Description	Date/Time	Cht	Rate bbl/min	Volume bbl		Pressure psig		Comments

Sold To #: 300721

Ship To #: 2878358

Quote #:

Sales Order #:

8469958

SUMMIT Version: 7.2.27

Sunday, September 25, 2011 11:11:00

# HALLIBURTON

## Cementing Job Log

		#		Stage	Total	Tubing	Casing	
Pump Tail Cement	09/25/2011 09:41		8	60.1			365.0	160 SKS 12.8 PPG, 2.11 FT3/SK, 11.76 GAL/SK
Shutdown	09/25/2011 09:50							
Drop Top Plug	09/25/2011 09:52							PLUG LAUNCHED
Pump Displacement	09/25/2011 09:56		10	187.8			875.0	FRESH WATER
Slow Rate	09/25/2011 10:18		2	10			575.0	SLOW RATE 10 BBLS PRIOR TO CALCULATED DISPLACEMENT
Bump Plug	09/25/2011 10:20		2		197.7		1020. 0	PLUG BUMPED
Check Floats	09/25/2011 10:23							FLOATS HOLDING. HES RETURNED 1 BBL H2O TO PUMP
End Job	09/25/2011 10:25							PIPE WAS STATIC DURING JOB, GOOD CIRCULATION THROUGHOUT JOB. HES RETURNED 70 BBL CEMENT TO SURFACE
Pre-Rig Down Safety Meeting	09/25/2011 10:30							WITH ALL HES PERSONNEL
Rig-Down Equipment	09/25/2011 10:35							
Pre-Convoy Safety Meeting	09/25/2011 11:20							WITH ALL HES PERSONNEL
Crew Leave Location	09/25/2011 11:30							
Comment	09/25/2011 11:31							THANK YOU FOR USING HALLIBURTON CEMENT DEPARTMENT. JESSE SLAUGHTER AND CREW.

Sold To # : 300721

Ship To # :2878358

Quote # :

Sales Order # :

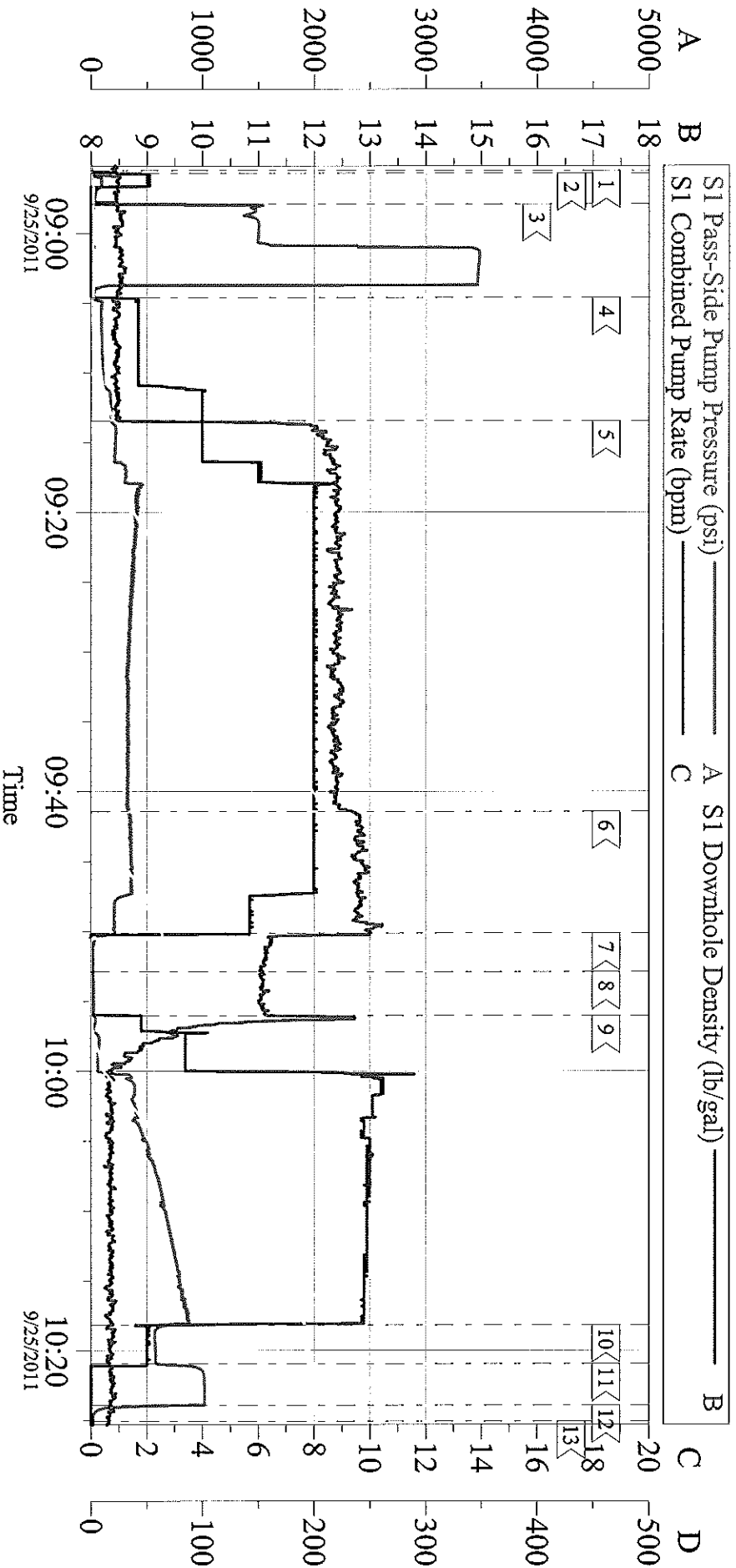
8469958

SUMMIT Version: 7.2.27

Sunday, September 25, 2011 11:11:00

# WILLIAMS

## RWF 44-31, 9 5/8 SURFACE



### Local Event Log

1 < START JOB	2 < PRIME LINES	3 < TEST LINES	08:55:29	08:55:41	08:57:53
4 < PUMP H2O SPACER	5 < PUMP LEAD CEMENT	6 < PUMP TAIL CEMENT	09:04:37	09:13:27	09:41:25
7 < SHUTDOWN	8 < DROP TOP PLUG	9 < PUMP DISPLACEMENT	09:50:07	09:52:54	09:56:01
10 < SLOW RATE	11 < BUMP PLUG	12 < CHECK FLOATS	10:18:12	10:20:59	10:23:57
13 < END JOB			10:25:06		

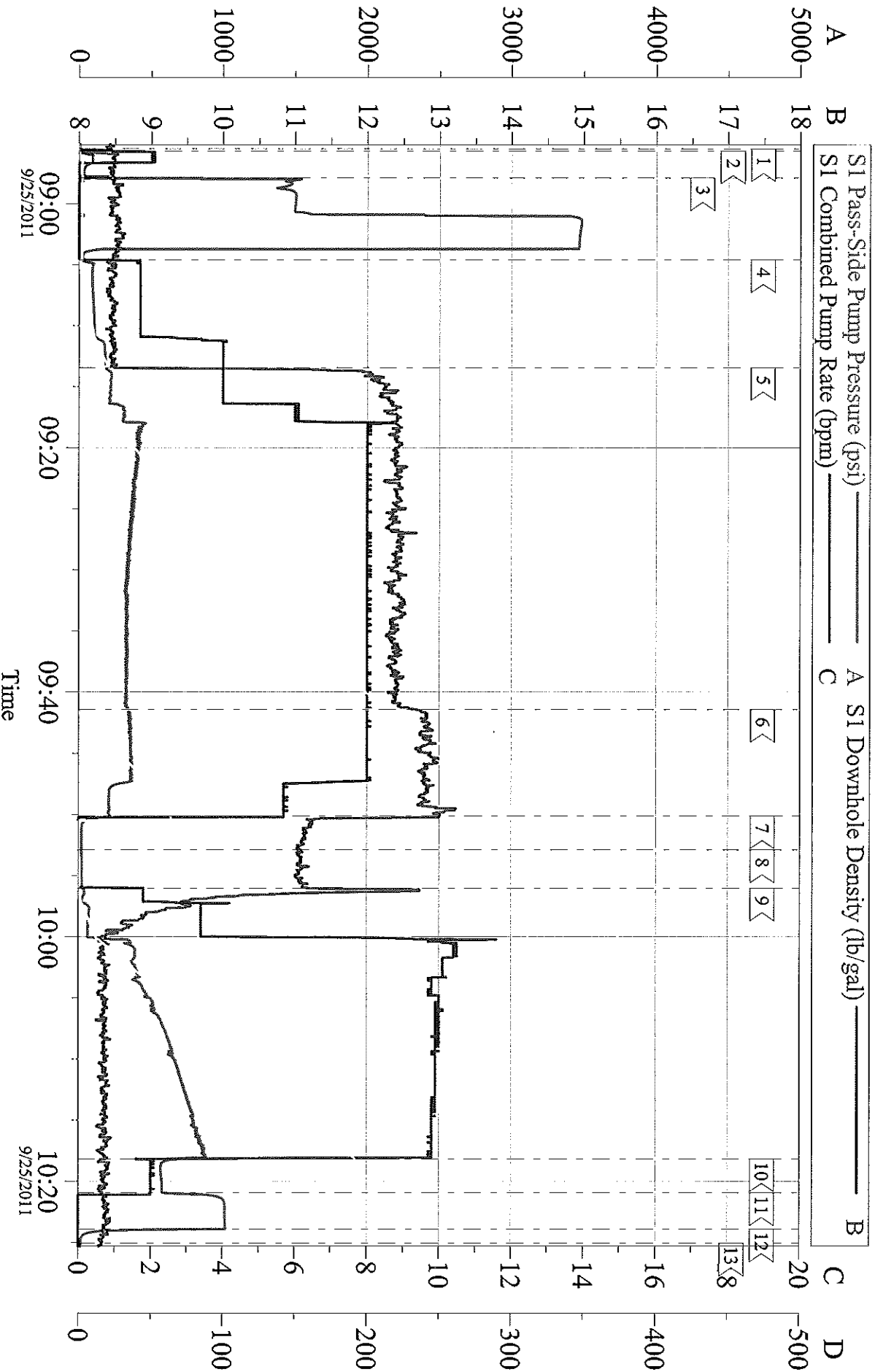
Customer: WILLIAMS  
 Well Description: RWF 44-31  
 Customer Rep: FRANK MOORE

Job Date: 25-Sep-2011  
 Job Type: SURFACE  
 Service Supervisor: JESSE SLAUGHTER

Sales Order #: 8469958  
 ADC Used: YES  
 Pump # / Operator: 6/KYLE BATH

# WILLIAMS

## RWF 44-31, 9 5/8 SURFACE



Customer: WILLIAMS  
Well Description: RWF 44-31  
Customer Rep: FRANK MOORE

Job Date: 25-Sep-2011  
Job Type: SURFACE  
Service Supervisor: JESSE SLAUGHTER

Sales Order #: 8469958  
ADC Used: YES  
Pump # / Operator: 6/KYLE BATH

OptiCem v6.4.10  
25-Sep-11 10:32