

# HALLIBURTON

## Cementing Job Summary

*The Road to Excellence Starts with Safety*

Sold To #: 300721	Ship To #: 2873264	Quote #:	Sales Order #: 8407629
Customer: WILLIAMS PRODUCTION RMT INC - EBUS	Customer Rep: MOORE, FRANK		
Well Name: RWF	Well #: 443-31	API/UWI #: 05-045-19792	
Field: Rulison	City (SAP): RIFLE	County/Parish: Garfield	State: Colorado
Lat: N 39.475 deg. OR N 39 deg. 28 min. 30.677 secs.	Long: W 107.929 deg. OR W -108 deg. 4 min. 14.516 secs.		
Contractor: NABORS 573	Rig/Platform Name/Num: NAB 573		
Job Purpose: Cement Surface Casing			
Well Type: Development Well	Job Type: Cement Surface Casing		
Sales Person: KOHL, KYLE	Srv Supervisor: SLAUGHTER, JESSE	MBU ID Emp #: 454315	

### Job Personnel

HES Emp Name	Exp Hrs	Emp #	HES Emp Name	Exp Hrs	Emp #	HES Emp Name	Exp Hrs	Emp #
BATH, KYLE Thomas	6.5	477632	SLAUGHTER, JESSE Dean	6.5	454315	WINKER, STEVEN	6.5	478776
YOUNG, JEREMY R	6.5	418013						

### Equipment

HES Unit #	Distance-1 way	HES Unit #	Distance-1 way	HES Unit #	Distance-1 way	HES Unit #	Distance-1 way
10565341	60 mile	10856958	60 mile	10951245	60 mile	11560046	60 mile
11562538	60 mile						

### Job Hours

Date	On Location Hours	Operating Hours	Date	On Location Hours	Operating Hours	Date	On Location Hours	Operating Hours
09-13-2011	.5		09-14-2011	6	3.5			

TOTAL Total is the sum of each column separately

### Job

### Job Times

Formation Name	Formation Depth (MD)	Top	Bottom	Called Out	Date	Time	Time Zone
Form Type			BHST	On Location	13 - Sep - 2011	20:00	MST
Job depth MD	2628. ft		Job Depth TVD	Job Started	13 - Sep - 2011	23:30	MST
Water Depth			Wk Ht Above Floor	Job Completed	14 - Sep - 2011	02:21	MST
Perforation Depth (MD)	From		To	Job Completed	14 - Sep - 2011	03:57	MST
				Departed Loc	14 - Sep - 2011	06:00	MST

### Well Data

Description	New / Used	Max pressure psig	Size in	ID in	Weight lbm/ft	Thread	Grade	Top MD ft	Bottom MD ft	Top TVD ft	Bottom TVD ft
OPEN HOLE				13.5				.	2682.		
SURFACE CASING	Unknown		9.625	9.001	32.3			.	2628.		

### Sales/Rental/3<sup>rd</sup> Party (HES)

Description	Qty	Qty uom	Depth	Supplier
PLUG,CMTG,TOP,9 5/8,HWE,8.16 MIN/9.06 MA	1	EA		

### Tools and Accessories

Type	Size	Qty	Make	Depth	Type	Size	Qty	Make	Depth	Type	Size	Qty	Make
Guide Shoe					Packer					Top Plug	9.625	1	HES
Float Shoe					Bridge Plug					Bottom Plug			
Float Collar					Retainer					SSR plug set			
Insert Float										Plug Container	9.625	1	HES
Stage Tool										Centralizers			

### Miscellaneous Materials

Gelling Agt	Conc	Surfactant	Conc	Acid Type	Qty	Conc	%
Treatment Fld	Conc	Inhibitor	Conc	Sand Type	Size	Qty	

### Fluid Data

Stage/Plug #: 1

# HALLIBURTON

## Cementing Job Summary

Fluid #	Stage Type	Fluid Name	Qty	Qty uom	Mixing Density lbm/gal	Yield ft <sup>3</sup> /sk	Mix Fluid Gal/sk	Rate bbl/min	Total Mix Fluid Gal/sk
1	Water Spacer	FRESH WATER	20.00	bbl	8.33	.0	.0	4	
2	Lead Cement	VERSACEM (TM) SYSTEM (452010)	450.0	sacks	12.3	2.38	13.75	8	13.75
	13.75 Gal	FRESH WATER							
3	Tail Cement	VERSACEM (TM) SYSTEM (452010)	160.0	sacks	12.8	2.11	11.75	8	11.75
	11.75 Gal	FRESH WATER							
4	Displacement Fluid	FRESH WATER	203.4	bbl	8.33	.0	.0	10	
<b>Calculated Values</b>		<b>Pressures</b>		<b>Volumes</b>					
Displacement	203.4	Shut In: Instant		Lost Returns	NO	Cement Slurry	250.8	Pad	
Top Of Cement	SURFACE	5 Min		Cement Returns	35	Actual Displacement	203.4	Treatment	
Frac Gradient		15 Min		Spacers	20	Load and Breakdown		Total Job	474.2
<b>Rates</b>									
Circulating	5	Mixing	8	Displacement	10	Avg. Job	7		
Cement Left In Pipe	Amount	43.1 ft	Reason	Shoe Joint					
Frac Ring # 1 @	ID	Frac ring # 2 @	ID	Frac Ring # 3 @	ID	Frac Ring # 4 @	ID		
The Information Stated Herein Is Correct				Customer Representative Signature					

# HALLIBURTON

## Cementing Job Log

*The Road to Excellence Starts with Safety*

Sold To #: 300721	Ship To #: 2873264	Quote #:	Sales Order #: 8407629
Customer: WILLIAMS PRODUCTION RMT INC - EBUS	Customer Rep: MOORE, FRANK		
Well Name: RWF	Well #: 443-31	API/UWI #: 05-045-19792	
Field: Rulison	City (SAP): RIFLE	County/Parish: Garfield	State: Colorado
Legal Description:			
Lat: N 39.475 deg. OR N 39 deg. 28 min. 30.677 secs.		Long: W 107.929 deg. OR W -108 deg. 4 min. 14.516 secs.	
Contractor: NABORS 573	Rig/Platform Name/Num: NAB 573		
Job Purpose: Cement Surface Casing	Ticket Amount:		
Well Type: Development Well	Job Type: Cement Surface Casing		
Sales Person: KOHL, KYLE	Srvc Supervisor: SLAUGHTER, JESSE	MBU ID Emp #: 454315	

Activity Description	Date/Time	Cht #	Rate bbl/min	Volume bbl		Pressure psig		Comments
				Stage	Total	Tubing	Casing	
Call Out	09/13/2011 20:00							TD 2682 FT, TP 2628 FT, SHOE 43.15 FT, CSG 9 5/8 IN 32.3 LB/FT, HOLE 13 1/2 IN, MUD WT 10.4 PPG
Pre-Convoy Safety Meeting	09/13/2011 21:20							WITH ALL HES PERSONNEL
Crew Leave Yard	09/13/2011 21:30							
Arrive At Loc	09/13/2011 23:30							RIG WAS RUNNING CASING UPON HES ARRIVAL
Assessment Of Location Safety Meeting	09/13/2011 23:50							WITH ALL HES PERSONNEL
Other	09/14/2011 00:00							SPOT EQUIPMENT
Pre-Rig Up Safety Meeting	09/14/2011 00:10							WITH ALL HES PERSONNEL
Rig-Up Equipment	09/14/2011 00:20							
Pre-Job Safety Meeting	09/14/2011 02:00							WITH ALL PERSONNEL ON LOCATION
Start Job	09/14/2011 02:21							
Other	09/14/2011 02:21		2	2			89.0	FILL LINES WITH FRESH WATER
Test Lines	09/14/2011 02:23							TESTED LINES TO 3356 PSI PRESSURE HOLDING
Pump Spacer 1	09/14/2011 02:31		4	20			95.0	FRESH WATER
Pump Lead Cement	09/14/2011 02:39		8	190.7			290.0	450 SKS AT 12.3 PPG, 2.38 FT3/SK, 13.75 GAL/SK
Activity Description	Date/Time	Cht	Rate bbl/min	Volume bbl		Pressure psig		Comments

Sold To #: 300721 Ship To #: 2873264 Quote #: Sales Order #: 8407629

SUMMIT Version: 7.2.27

Thursday, September 15, 2011 03:48:00

# HALLIBURTON

## Cementing Job Log

		#		Stage	Total	Tubing	Casing	
Pump Tail Cement	09/14/2011 03:09		8	60.1			265	160 SKS AT 12.8 PPG, 2.11 FT3/SK, 11.75 GAL/SK
Shutdown	09/14/2011 03:19							
Drop Top Plug	09/14/2011 03:21							PLUG LAUNCHED
Pump Displacement	09/14/2011 03:24		10	193.4			778.0	FRESH WATER
Slow Rate	09/14/2011 03:47		2	10			532.0	SLOW RATE 10 BBLS PRIOR TO CALCULATED DISPLACEMENT
Bump Plug	09/14/2011 03:53		2		203.4		981.0	PLUG BUMPED
Check Floats	09/14/2011 03:56							FLOATS HOLDING. HES RETURNED 1 BBL H2O TO PUMP
End Job	09/14/2011 03:57							PIPE WAS STATIC DURING JOB, GOOD CIRCULATION THROUGHOUT JOB, HES RETURNED 35 BBL CEMENT TO SURFACE
Pre-Rig Down Safety Meeting	09/14/2011 04:10							WITH ALL HES PERSONNEL
Rig-Down Equipment	09/14/2011 04:20							
Pre-Convoy Safety Meeting	09/14/2011 05:50							WITH ALL HES PERSONNEL
Crew Leave Location	09/14/2011 06:00							
Comment	09/14/2011 06:01							THANK YOU FOR USING HALLIBURTON CEMENT DEPARTMENT. JESSE SLAUGHTER AND CREW.

Sold To # : 300721

Ship To # :2873264

Quote # :

Sales Order # :

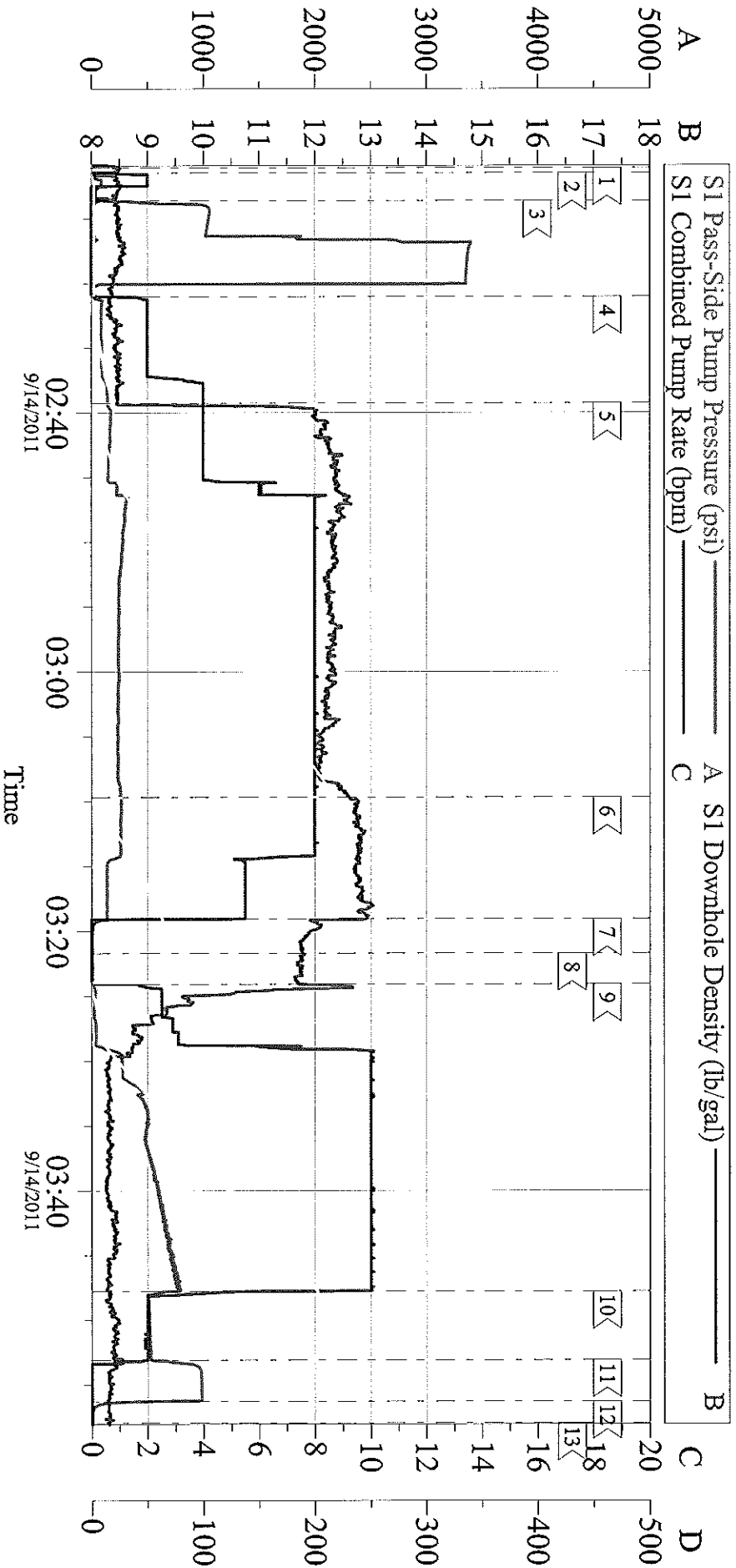
8407629

SUMMIT Version: 7.2.27

Thursday, September 15, 2011 03:48:00

# WILLIAMS

## RWF 443-31, 9 5/8 SURFACE



### Local Event Log

1 < START JOB	02:21:04	2 < PRIME LINES	02:21:27	3 < TEST LINES	02:23:37
4 < PUMP H2O SPACER	02:31:03	5 < PUMP LEAD CEMENT	02:39:16	6 < PUMP TAIL CEMENT	03:09:41
7 < SHUTDOWN	03:19:03	8 < DROP TOP PLUG	03:21:42	9 < PUMP DISPLACEMENT	03:24:05
10 < SLOW RATE	03:47:48	11 < BUMP PLUG	03:53:06	12 < CHECK FLOATS	03:56:17
13 < END JOB	03:57:58				

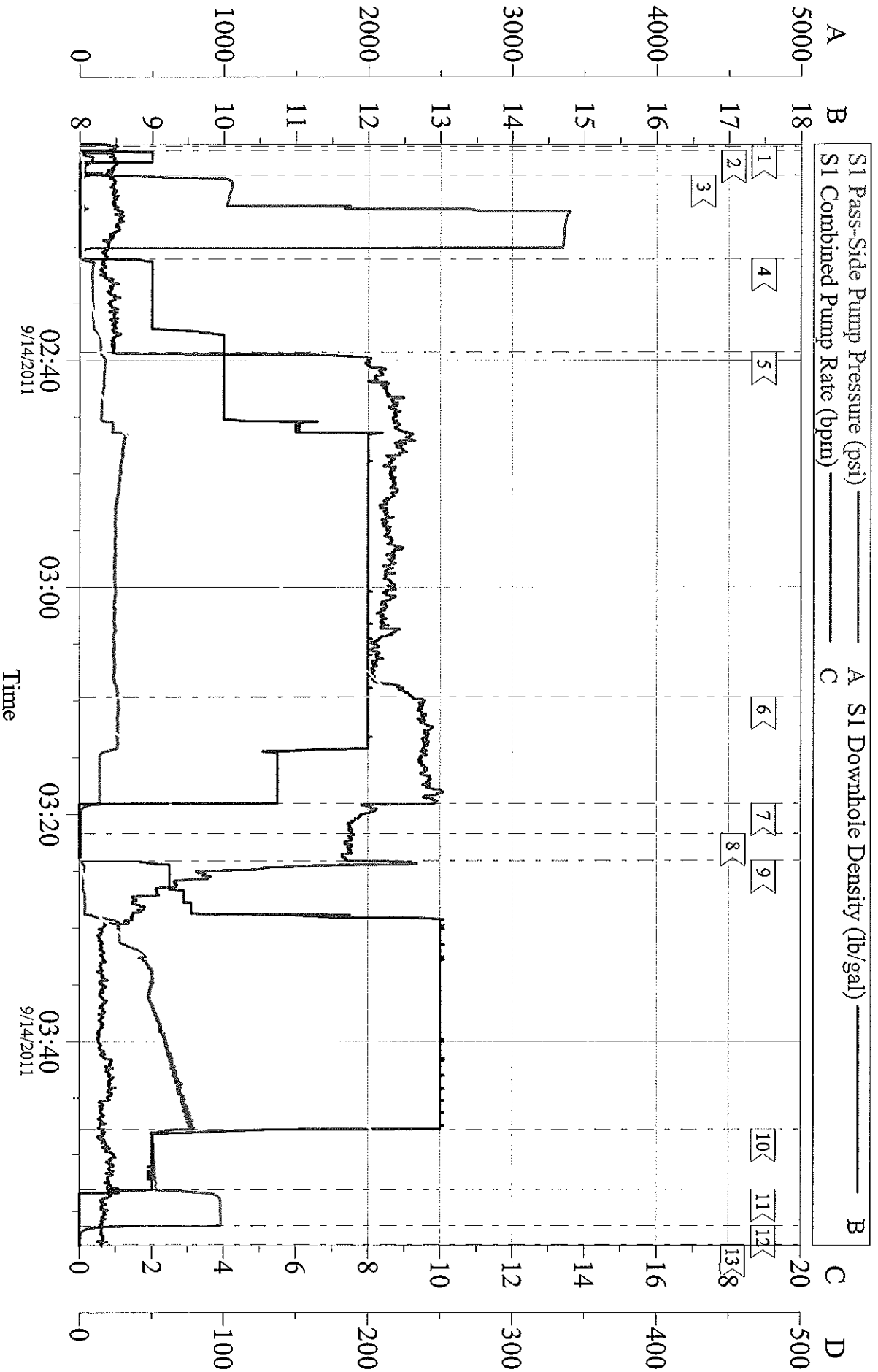
Customer: WILLIAMS  
 Well Description: RWF 443-31  
 Customer Rep: FRANK MOORE

Job Date: 14-Sep-2011  
 Job Type: SURFACE  
 Service Supervisor: JESSE SLAUGHTER

Sales Order #: 8407629  
 ADC Used: YES  
 Pump # / Operator: 5/KYLE BATH

# WILLIAMS

## RWF 443-31, 9 5/8 SURFACE



Customer: WILLIAMS  
 Well Description: RWF 433-31  
 Customer Rep: FRANK MOORE

Job Date: 14-Sep-2011  
 Job Type: SURFACE  
 Service Supervisor: JESSE SLAUGHTER

Sales Order #: 8407629  
 ADC Used: YES  
 Pump # / Operator: 5/KYLE BATH

OptiCem v6.4.10  
 14-Sep-11 04:05