

Downhole Schematic for N Parachute WF13D-30 A36A 596



Project :North Piceance

API # :05045126790000

Surface Location : NENE Sec 36 T5S - R96W 6th PI

Area : N Parachute

County :

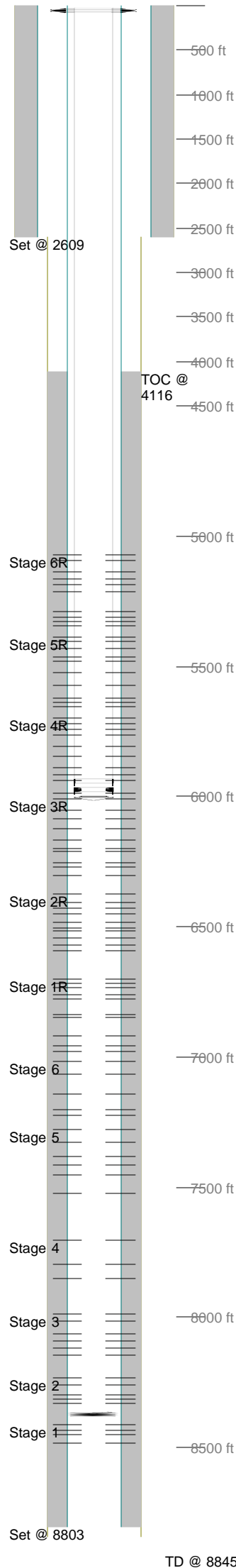
BHL : SWSW-30-5S-95 W 6th PM

As Of : 04/17/2012

GL : 5790.0 ft

KB to GL : 14.0 ft

KB : 5804.0 ft



Casing Details									
Section	Hole	Casing	Mass	Set At	Length	Thread	Grade	Description	
Surface	13.500	9.625	32.3	2,609	2,609			Surface	
Production	7.875	4.5	0	8,803	8,803			Production	

Cement Details									
Section	Sequence		Top	Density	Blend / Additives				
Surface	Lead		0	0.0	/				
Production	Lead		4,116	0.0	/				

Tubing and Downhole Equipment									
O.D.	Length	Depth	Description						
0.000	24.00	24.00	KB						
7.063	0.66	24.66	7 1/16 Seabord Tbg Hanger						
3.060	5,908.76	5,933.42	000 Jts 2 3/8 N80 4.7# Yellow Band Tbg						
3.060	1.13	5,935.55	2 3/8 Flag Nipple						
3.060	31.40	5,965.95	1Jt 2 3/8 N80 4.7# Yellow Band Tbg						
3.060	1.13	5,967.08	2 3/8 Seat Nipple						
3.060	31.35	5,998.43	1 Jt 2 3/8 N80 Yellow Band Tbg						
3.060	0.65	5,999.08	Bit Pump Off Sub						
3.750	0.50	8,362.00	Bottom of POBS and 3-3/4" Bit						

Perforations									
Stage	Date	From	To	Shots	Stage	Date	From	To	Shots
1	06/21/2007	8,486	8,488	6	4	07/13/2007	7,854	7,856	4
		8,453	8,455	5			7,796	7,798	4
		8,434	8,436	3			7,705	7,707	3
		8,415	8,417	3	4R				
1R					Date	From	To	Shots	
	02/14/2012	6,978	6,979	3	02/28/2012	5,988	5,989	3	
		6,960	6,961	3		5,941	5,942	3	
		6,918	6,919	3		5,918	5,919	3	
		6,850	6,851	3		5,890	5,891	3	
		6,836	6,837	3		5,846	5,847	3	
		6,780	6,781	3		5,808	5,809	3	
		6,762	6,763	3		5,764	5,765	3	
		6,734	6,735	3		5,742	5,743	3	
		6,718	6,719	3		5,719	5,720	3	
		6,704	6,705	3		5,699	5,700	3	
2					5				
	06/28/2007	8,333	8,335	3	Date	From	To	Shots	
		8,312	8,314	3	07/20/2007	7,522	7,524	5	
		8,296	8,298	3		7,453	7,454	2	
		8,262	8,264	4		7,413	7,415	3	
		8,234	8,237	5		7,385	7,387	3	
2R						7,326	7,328	4	
	02/24/2012	6,593	6,594	3		7,278	7,280	3	
		6,571	6,572	3	5R				
		6,542	6,543	3	Date	From	To	Shots	
		6,518	6,519	3	02/29/2012	5,656	5,657	3	
		6,504	6,505	3		5,640	5,641	3	
		6,481	6,482	3		5,624	5,625	3	
		6,449	6,450	3		5,576	5,577	3	
		6,431	6,432	3		5,522	5,523	3	
		6,408	6,409	3		5,480	5,481	3	
		6,373	6,374	3		5,464	5,465	3	
3						5,431	5,432	3	
	07/05/2007	8,145	8,146	2		5,406	5,407	3	
		8,117	8,118	2		5,387	5,388	3	
		8,093	8,096	5	6				
		8,064	8,066	4	Date	From	To	Shots	
		8,013	8,014	3	07/24/2007	7,226	7,228	4	
		7,986	7,988	3		7,205	7,206	2	
3R						7,144	7,146	3	
	02/27/2012	6,306	6,307	3		7,069	7,072	5	
		6,273	6,274	3		7,018	7,020	3	
		6,256	6,257	3	6R				
		6,212	6,213	3	Date	From	To	Shots	
		6,199	6,200	3	03/01/2012	5,346	5,347	3	
		6,169	6,170	3		5,330	5,331	3	
		6,126	6,127	3		5,314	5,315	3	
		6,086	6,087	3		5,292	5,293	3	
		6,054	6,055	3		5,216	5,217	3	
		6,012	6,013	3		5,188	5,189	3	
						5,167	5,168	3	
						5,140	5,141	3	
						5,094	5,095	3	
						5,074	5,075	3	

Frac Summary									
Stage 1	: 8,415 - 8,488, 17 - 0.350"	shots, 3994 bbls of Slickwater, 148600 lbs of 30-50 Sand	Report Date: 06/22/2007						
Stage 2	: 8,234 - 8,334, 18 - 0.350"	shots, 2833 bbls of Slickwater, 87500 lbs of 30-50 Sand	Report Date: 06/29/2007						
Stage 3	: 7,986 - 8,146, 19 - 0.350"	shots, 2891 bbls of Slickwater, 94000 lbs of 30-50 Sand	Report Date: 07/06/2007						
Stage 4	: 7,705 - 7,856, 11 - 0.350"	shots, 2212 bbls of Slickwater, 75000 lbs of 30-50 Sand	Report Date: 07/13/2007						
Stage 5	: 7,278 - 7,524, 20 - 0.350"	shots, 4187 bbls of Slickwater, 160300 lbs of 30-50 Sand	Report Date: 07/21/2007						
Stage 6	: 7,018 - 7,228, 17 - 0.350"	shots, 3280 bbls of Slickwater, 119900 lbs of 30-50 Sand	Report Date: 07/23/2007						
Stage 1R	: 6,704 - 6,979, 30 - 0.420"	shots, 10191 bbls of Slickwater	Report Date: 02/25/2012						
Stage 2R	: 6,373 - 6,594, 30 - 0.420"	shots, 10858 bbls of Slickwater	Report Date: 02/27/2012						
Stage 3R	: 6,012 - 6,307, 30 - 0.420"	shots, 12381 bbls of Slickwater	Report Date: 02/27/2012						
Stage 4R	: 5,699 - 5,989, 30 - 0.420"	shots, 11238 bbls of Slickwater	Report Date: 02/29/2012						
Stage 5R	: 5,387 - 5,657, 30 - 0.420"	shots, 11332 bbls of Slickwater	Report Date: 03/01/2012						
Stage 6R	: 5,074 - 5,347, 30 - 0.420"	shots, 10764 bbls of Slickwater	Report Date: 03/01/2012						

Comments									
190 jts 2-3/8 N80 Yellow Band tbg.									
Junk in Hole: Bottom of POBS and 3-3/4" Bit.									