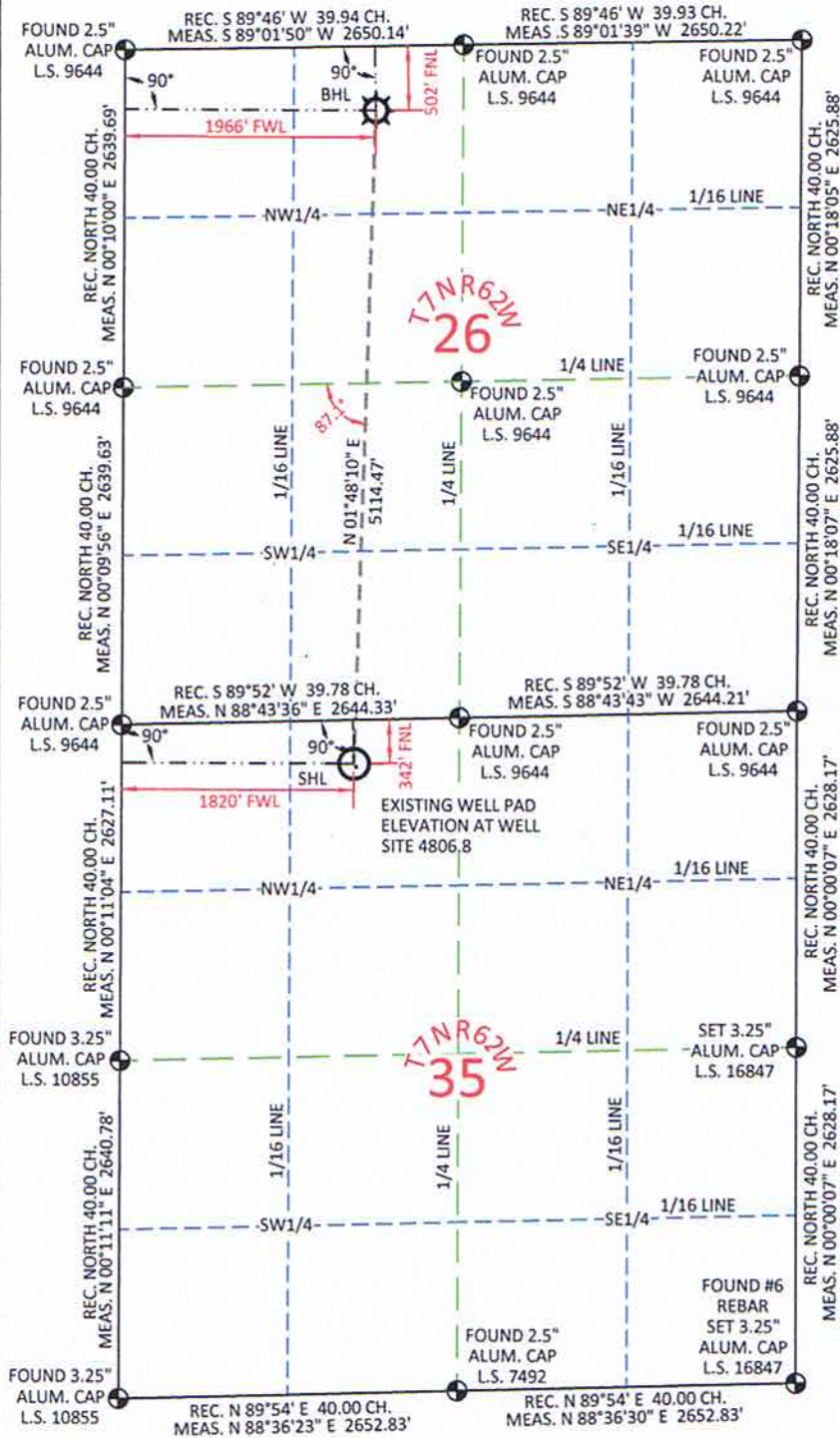


MARATHON CROW VALLEY 7-62-26-2H AS-DRILLED WELL LOCATION PLAT

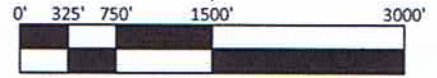
SURFACE HOLE LOCATED WITHIN THE NE1/4 NW1/4 SECTION 35 T7N R62W

BOTTOM HOLE LOCATED WITHIN THE NE1/4 NW1/4 SECTION 26 T7N R62W

OF THE 6TH P.M., WELD COUNTY, COLORADO



(SHL SECTION 35)
CURRENT LAND USE:
CROPLAND
IMPROVEMENTS:
NONE
PLANT COMMUNITIES:
WHEAT & MILLET



SURFACE HOLE LOCATION (SEC 35)

GEOGRAPHIC	LAT.	40.537107°
DEC. DEG.	LONG.	104.292144°
STATE PLANE	LAT.	40.537125°
CO. NORTH	LONG.	104.291638°
DEG. MIN. SEC.	LAT.	40°32'13.59"
NAD 27	LONG.	104°17'31.72"
NAD 83	LAT.	40°32'13.65"
NAD 27	LONG.	104°17'29.90"
NAD 83	NORTH	1440795.43
NAD 27	EAST	3335709.80
NAD 83	NORTH	440795.79
NAD 27	EAST	2335859.28

BOTTOM HOLE LOCATION (SEC 26)

GEOGRAPHIC	LAT.	40.551132°
DEC. DEG.	LONG.	104.291314°
STATE PLANE	LAT.	40.551149°
CO. NORTH	LONG.	104.290808°
DEG. MIN. SEC.	LAT.	40°33'04.08"
NAD 27	LONG.	104°17'28.73"
NAD 83	LAT.	40°33'04.14"
NAD 27	LONG.	104°17'26.91"
NAD 83	NORTH	1445907.37
NAD 27	EAST	3335870.70
NAD 83	NORTH	445907.63
NAD 27	EAST	2336020.13

FOOTAGE: 1820' FWL - 342' FNL		FOOTAGE: 1966' FWL - 502' FNL	
MEASURE DATE	INSTRUMENT OPERATOR	PDOP	SHL GRND ELEV.
3/19/2012	ALLEN BLATTEL	1.5	4806.8

I, Rodney A. Walters, Professional Land Surveyor, CO. PLS # 16847 hereby certify that (in accordance with a request from Erin Bibeau with Marathon Oil Co, 5555 San Felipe, Houston, TX 77056) I and/or personnel under my direction made a survey on the 19th day of March 2012, for the Surface Hole Location and Elevation of Marathon Oil Co. CROW VALLEY 7-62-26-2H being located the NE 1/4 of the NW 1/4, Section 35, T7N R62W and the Bottom Hole Location being located in the NE1/4 NW1/4 of Section 26, T7N, R62W, both being of the 6th P.M., Weld County, State of Colorado.

- All bearings and distances are GRID, based on the Colorado State Plane Coordinate System, North Zone, North American Datum 1983 from GPS observations occupying a WHS control point (5/8" rebar) and having the Location and Elevation derived from an Opus Solution.
- Vertical Datum used is of NAVD 88.
- Record Bearings and Distances as shown are based on the General Land Office Survey plat approved on the 16th day of December 1872.
- Geographic coordinates for the bottom hole location were taken from the wellpath report prepared by Baker Hughes for Crow Valley 7-62-26-2H and dated 04/18/2012.



CONFIDENTIALITY NOTES:

The information contained in this plat is legally privileged and confidential information intended only for the use of the recipients. If you are not the intended recipients, you are hereby notified that any use, dissemination, distribution or copying of this information is strictly prohibited.



**WILLIAM H. SMITH
& ASSOCIATES P.C.**

SURVEYING CONSULTANTS

150 EAST SECOND NORTH PHONE: 307-875-3638
GREEN RIVER, WY 307-875-3639
www.whsmithpc.com

LEGEND

- FOUND CORNER
- CALCULATED CORNER
- NOTHING FOUND

LOCATION:

CROW VALLEY 7-62-26-2H
WITHIN THE NE 1/4 NW 1/4
SECTION 35,
T 7 N, R 62 W,
6TH PM.
WELD COUNTY,
COLORADO

MARATHON OIL COMPANY

PO BOX 3128, HOUSTON TX, 77253
5555 SAN FELIPE, HOUSTON TX, 77056

AS-DRILLED WELL LOCATION PLAT

SCALE: 1"=1500' EXHIBIT "A"
DATE: 04/28/2012 SHEET 1 OF 1