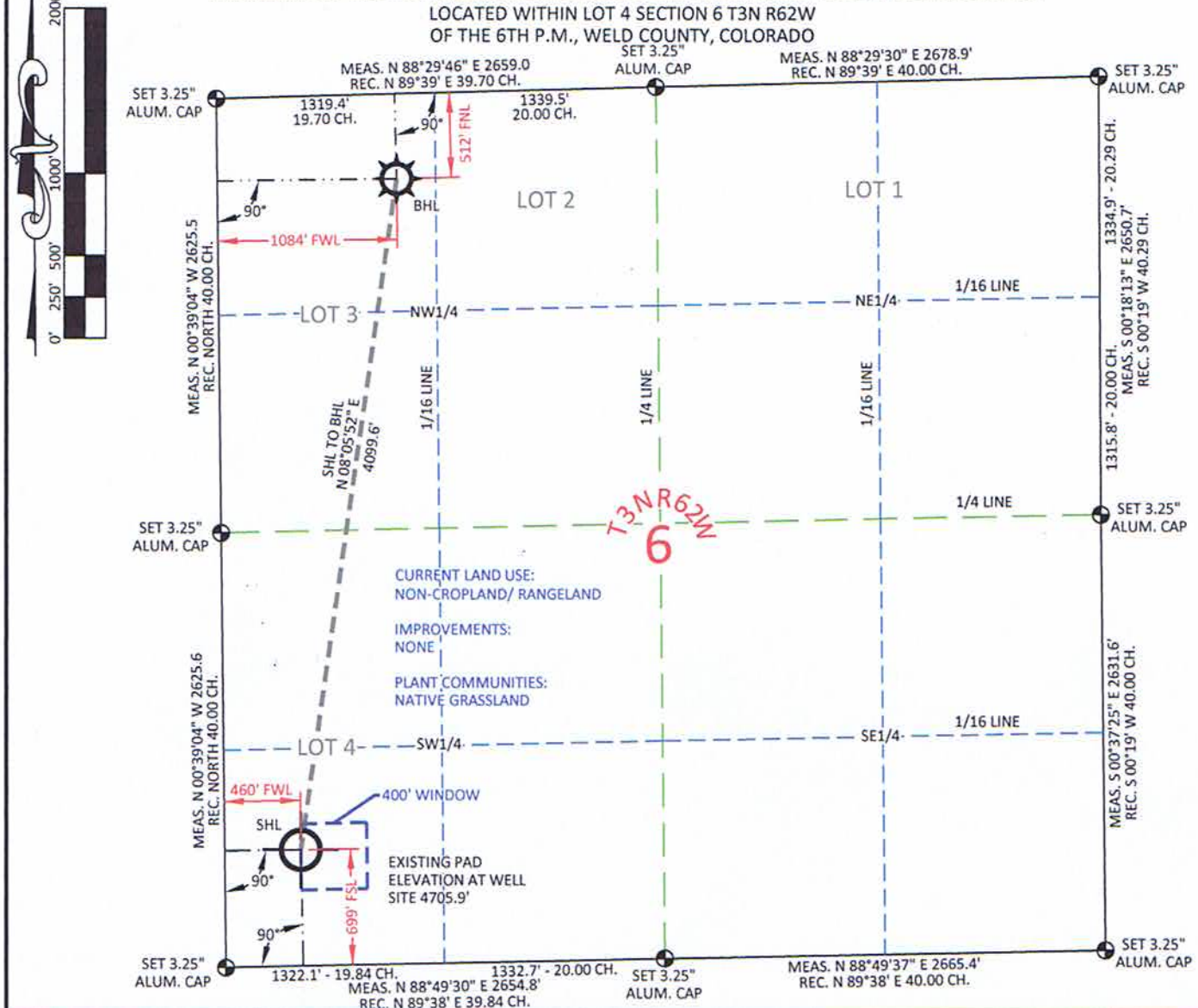


# MARATHON OIL CO. FRENCH LAKE 3-62-6-1H AS-DRILLED WELL LOCATION PLAT

LOCATED WITHIN LOT 4 SECTION 6 T3N R62W  
OF THE 6TH P.M., WELD COUNTY, COLORADO



## SURFACE HOLE (AS-DRILLED)

GEOGRAPHIC DEC. DEG.	LAT.	40.248585°
GEOGRAPHIC DEC. DEG.	LONG.	104.374657°
GEOGRAPHIC DEC. DEG.	LAT.	40.248605°
GEOGRAPHIC DEC. DEG.	LONG.	104.374147°
GEOGRAPHIC DEC. MIN. SEC.	LAT.	40°14'54.91"
GEOGRAPHIC DEC. MIN. SEC.	LONG.	104°22'28.76"
GEOGRAPHIC DEC. MIN. SEC.	LAT.	40°14'54.98"
GEOGRAPHIC DEC. MIN. SEC.	LONG.	104°22'26.93"
STATE PLANE CO. NORTH	NORTH	1335394.55
STATE PLANE CO. NORTH	EAST	3314111.37
STATE PLANE CO. NORTH	NORTH	335397.39
STATE PLANE CO. NORTH	EAST	2314261.81

FOOTAGE: 460' FWL - 699' FSL

## BOTTOM HOLE (AS-DRILLED)

GEOGRAPHIC DEC. DEG.	LAT.	40.259706°
GEOGRAPHIC DEC. DEG.	LONG.	104.372403°
GEOGRAPHIC DEC. DEG.	LAT.	40.259725°
GEOGRAPHIC DEC. DEG.	LONG.	104.371894°
GEOGRAPHIC DEC. MIN. SEC.	LAT.	40°15'34.94"
GEOGRAPHIC DEC. MIN. SEC.	LONG.	104°22'20.65"
GEOGRAPHIC DEC. MIN. SEC.	LAT.	40°15'35.01"
GEOGRAPHIC DEC. MIN. SEC.	LONG.	104°22'18.82"
STATE PLANE CO. NORTH	NORTH	1339453.29
STATE PLANE CO. NORTH	EAST	3314688.85
STATE PLANE CO. NORTH	NORTH	339456.05
STATE PLANE CO. NORTH	EAST	2314839.25

FOOTAGE: 1084' FWL - 512' FNL


I, Rodney A. Walters, Professional Land Surveyor, CO. RLS # 16847 hereby certify that (in accordance with a request from Erin Bibeau with Marathon Oil Co, 5555 San Felipe, Houston, TX 77056) I and or personnel under my direction made a survey on the 21st day of January 2012, for the Surface Hole Location and Elevation of Marathon Oil Co. FRENCH LAKE 3-62-6-1H being located within Lot 4, Section 6, T3N R62W, and the Bottom Hole Location being located within Lot 3 of Section 6, T3N R62W, both being of the 6th P.M., Weld County, State of Colorado.

- All bearings and distances are GRID, based on the Colorado State Plane Coordinate System, North Zone, North American Datum 1983 from GPS observations occupying a WHS control point (5/8" rebar) and having the Location and Elevation derived from an Opus Solution.
- Vertical Datum used is of NAVD 88.
- Record Bearings and Distances as shown are based on the General Land Office Survey plat approved on the 24th day of November 1868.
- Geographic coordinates for the bottom hole location were taken from the wellpath report prepared by Baker Hughes for French Lake 3-62-6-1H and dated 1/20/2012.



## CONFIDENTIALITY NOTES:

The information contained in this plat is legally privileged and confidential information intended only for the use of the recipients. If you are not the intended recipients, you are hereby notified that any use, dissemination, distribution or copying of this information is strictly prohibited.



**WILLIAM H. SMITH & ASSOCIATES P.C.**  
SURVEYING CONSULTANTS  
350 EAST SECOND NORTH PHONE: 307-875-3638  
GREEN RIVER, WY 307-875-3639  
www.whsmithpc.com

DRAWN BY: LAL	CHECKED BY: RAW
PROJECT NO: 36261H	JOB NO: 2011001
REVISIONS:	

### LEGEND

- FOUND CORNER
- ⊗ CALCULATED CORNER
- NOTHING FOUND

### LOCATION:

FRENCH LAKE 3-62-6-1H  
WITHIN LOT 4  
SECTION 6,  
T 3 N, R 62 W,  
6TH P.M.  
WELD COUNTY,  
COLORADO

### MARATHON OIL COMPANY

PO BOX 3128, HOUSTON TX, 77253  
5555 SAN FELIPE, HOUSTON TX, 77056

### AS-DRILLED WELL LOCATION PLAT

SCALE: 1"=1000'	EXHIBIT "A"
DATE: 05/07/2012	SHEET 1 OF 1