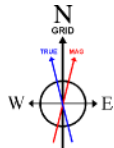


MARATHON OIL COMPANY

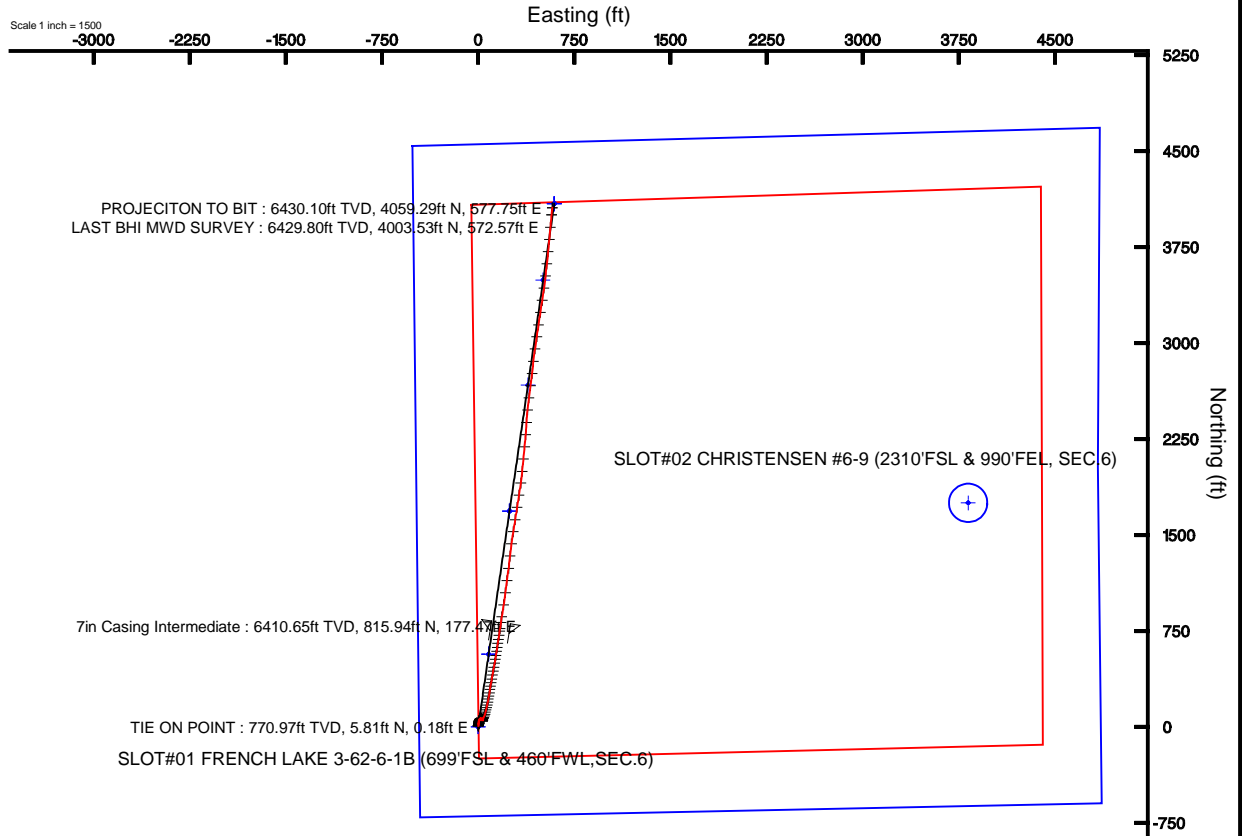
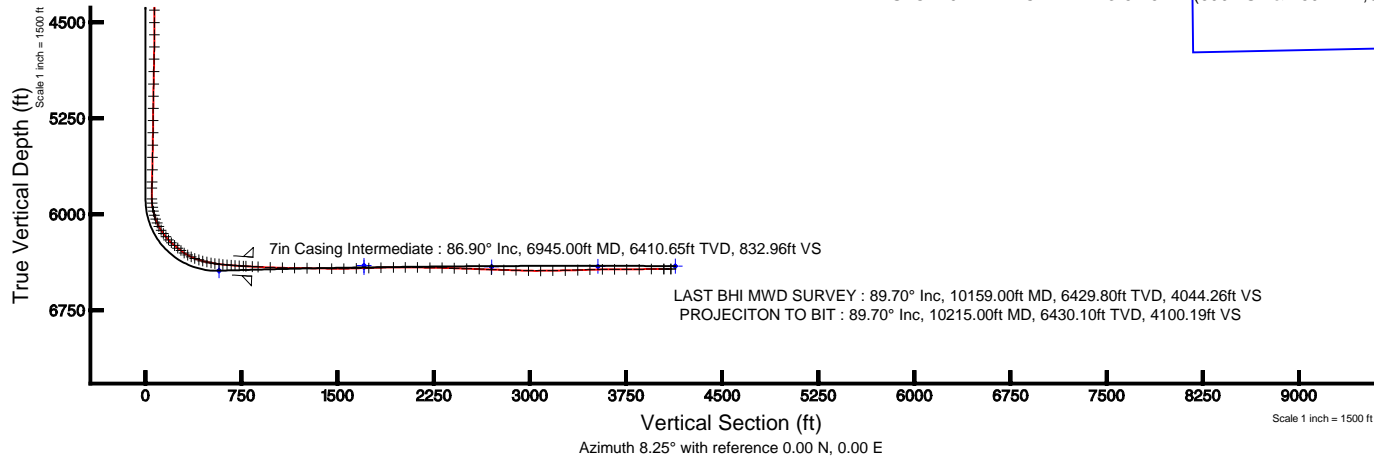
Location: COLORADO Slot: SLOT#01 FRENCH LAKE 3-62-6-1B (699'FSL & 460'FWL, SEC.6)
Field: WELD COUNTY (NAD 83, GRID NORTH) Well: FRENCH LAKE 3-62-6-1B
Facility: SEC.06-T3N-R62W Wellbore: FRENCH LAKE 3-62-6-1B PWB

Plot reference wellpath is FRENCH LAKE 3-62-6-1B (REV-F.O) PWP

True vertical depths are referenced to H&P 321 (RKB)	Grid System: NAD83 / Lambert Colorado SP, Northern Zone (501), US feet
Measured depths are referenced to H&P 321 (RKB)	North Reference: Grid north
H&P 321 (RKB) to Mean Sea Level: 4736 feet	Scale: True distance
Mean Sea Level to Mud line (At Slot: SLOT#01 FRENCH LAKE 3-62-6-1B (699'FSL & 460'FWL, SEC.6)): 0 feet	Depths are in feet
Coordinates are in feet referenced to Slot	Created by: cookdenn on 1/20/2012



BGGM (1945.0 to 2012.0) Dip: 66.99° Field: 53041.4 nT
Magnetic North is 8.52 degrees East of True North (at 12/28/2011)
Grid North is 0.73 degrees East of True North
To correct azimuth from True to Grid subtract 0.73 degrees
To correct azimuth from Magnetic to Grid add 7.80 degrees
For example: if the Magnetic North Azimuth = 90 degs, then the Grid North Azimuth = 90 + 7.80 = 97.80





Actual Wellpath Report

FRENCH LAKE 3-62-6-1B awp

Page 1 of 8



REFERENCE WELLPATH IDENTIFICATION

Operator	MARATHON OIL COMPANY	Slot	SLOT#01 FRENCH LAKE 3-62-6-1B (699'FSL & 460'FWL,SEC.6)
Area	COLORADO	Well	FRENCH LAKE 3-62-6-1B
Field	WELD COUNTY (NAD 83, GRID NORTH)	Wellbore	FRENCH LAKE 3-62-6-1B awb
Facility	SEC.06-T3N-R62W		

REPORT SETUP INFORMATION

Projection System	NAD83 / Lambert Colorado SP, Northern Zone (501), US feet	Software System	WellArchitect® 3.0.2
North Reference	Grid	User	Cookdanm
Scale	0.999957	Report Generated	1/20/2012 at 9:53:31 AM
Convergence at slot	0.73° East	Database/Source file	WA_Denver/FRENCH_LAKE_3-62-6-1B_awb.xml

WELLPATH LOCATION

	Local coordinates		Grid coordinates		Geographic coordinates	
	North[ft]	East[ft]	Easting[US ft]	Northing[US ft]	Latitude	Longitude
Slot Location	-0.50	0.21	3314111.09	1335394.29	40°14'54.905"N	104°22'28.767"W
Facility Reference Pt			3314110.88	1335394.80	40°14'54.910"N	104°22'28.770"W
Field Reference Pt			3476081.76	1512960.14	40°43'43.704"N	103°46'55.829"W

WELLPATH DATUM

Calculation method	Minimum curvature	H&P 321 (RKB) to Facility Vertical Datum	4736.00ft
Horizontal Reference Pt	Slot	H&P 321 (RKB) to Mean Sea Level	4736.00ft
Vertical Reference Pt	H&P 321 (RKB)	H&P 321 (RKB) to Mud Line at Slot (SLOT#01 FRENCH LAKE 3-62-6-1B (699'FSL & 460'FWL,SEC.6))	4736.00ft
MD Reference Pt	H&P 321 (RKB)	Section Origin	N 0.00, E 0.00 ft
Field Vertical Reference	Mean Sea Level	Section Azimuth	8.25°



Actual Wellpath Report

FRENCH LAKE 3-62-6-1B awp

Page 2 of 8



REFERENCE WELLPATH IDENTIFICATION

Operator	MARATHON OIL COMPANY	Slot	SLOT#01 FRENCH LAKE 3-62-6-1B (699'FSL & 460'FWL,SEC.6)
Area	COLORADO	Well	FRENCH LAKE 3-62-6-1B
Field	WELD COUNTY (NAD 83, GRID NORTH)	Wellbore	FRENCH LAKE 3-62-6-1B awb
Facility	SEC.06-T3N-R62W		

WELLPATH DATA (123 stations)

MD [ft]	Inclination [°]	Azimuth [°]	TVD [ft]	Vert Sect [ft]	North [ft]	East [ft]	Grid East [US ft]	Grid North [US ft]	Latitude	Longitude	DLS [°/100ft]	Comments
771.00	0.900	1.800	770.97	5.78	5.81	0.18	3314111.27	1335400.10	40°14'54.962"N	104°22'28.764"W	0.00	TIE ON POINT
802.00	0.900	1.300	801.97	6.26	6.30	0.19	3314111.28	1335400.59	40°14'54.967"N	104°22'28.764"W	0.03	
896.00	0.900	2.600	895.95	7.73	7.77	0.24	3314111.33	1335402.06	40°14'54.982"N	104°22'28.763"W	0.02	
988.00	0.800	6.900	987.94	9.09	9.13	0.35	3314111.44	1335403.42	40°14'54.995"N	104°22'28.761"W	0.13	
1079.00	1.000	14.500	1078.93	10.51	10.53	0.63	3314111.72	1335404.82	40°14'55.009"N	104°22'28.758"W	0.26	
1171.00	1.000	10.300	1170.92	12.11	12.10	0.97	3314112.06	1335406.39	40°14'55.024"N	104°22'28.753"W	0.08	
1263.00	1.200	15.600	1262.90	13.87	13.82	1.38	3314112.47	1335408.11	40°14'55.041"N	104°22'28.747"W	0.24	
1354.00	1.000	11.600	1353.89	15.61	15.51	1.79	3314112.88	1335409.80	40°14'55.058"N	104°22'28.742"W	0.24	
1445.00	1.100	25.200	1444.87	17.24	17.08	2.32	3314113.41	1335411.37	40°14'55.073"N	104°22'28.735"W	0.29	
1533.00	1.100	25.900	1532.85	18.85	18.60	3.05	3314114.14	1335412.89	40°14'55.088"N	104°22'28.725"W	0.02	
1625.00	1.000	29.500	1624.84	20.44	20.10	3.83	3314114.92	1335414.39	40°14'55.103"N	104°22'28.715"W	0.13	
1718.00	0.800	21.400	1717.83	21.83	21.41	4.47	3314115.56	1335415.70	40°14'55.116"N	104°22'28.706"W	0.25	
1811.00	0.600	20.000	1810.82	22.94	22.47	4.87	3314115.96	1335416.76	40°14'55.126"N	104°22'28.701"W	0.22	
1908.00	0.800	2.700	1907.81	24.11	23.62	5.08	3314116.17	1335417.91	40°14'55.138"N	104°22'28.698"W	0.30	
2004.00	0.900	357.900	2003.80	25.52	25.05	5.08	3314116.17	1335419.34	40°14'55.152"N	104°22'28.698"W	0.13	
2099.00	0.800	2.900	2098.79	26.91	26.45	5.09	3314116.18	1335420.74	40°14'55.166"N	104°22'28.697"W	0.13	
2195.00	0.800	348.300	2194.78	28.21	27.78	4.99	3314116.08	1335422.07	40°14'55.179"N	104°22'28.698"W	0.21	
2291.00	1.300	4.000	2290.77	29.92	29.52	4.93	3314116.02	1335423.81	40°14'55.196"N	104°22'28.699"W	0.60	
2386.00	1.300	0.800	2385.74	32.07	31.68	5.02	3314116.11	1335425.96	40°14'55.217"N	104°22'28.697"W	0.08	
2483.00	0.900	341.100	2482.72	33.84	33.50	4.79	3314115.88	1335427.78	40°14'55.235"N	104°22'28.700"W	0.56	
2579.00	1.000	5.200	2578.71	35.34	35.04	4.62	3314115.71	1335429.33	40°14'55.251"N	104°22'28.702"W	0.43	
2676.00	1.200	7.100	2675.69	37.20	36.89	4.82	3314115.91	1335431.18	40°14'55.269"N	104°22'28.699"W	0.21	
2771.00	1.300	357.500	2770.67	39.26	38.96	4.90	3314115.99	1335433.25	40°14'55.289"N	104°22'28.698"W	0.24	
2867.00	1.400	7.500	2866.64	41.50	41.21	5.00	3314116.09	1335435.50	40°14'55.312"N	104°22'28.696"W	0.27	
2963.00	1.400	15.600	2962.62	43.84	43.50	5.47	3314116.56	1335437.79	40°14'55.334"N	104°22'28.690"W	0.21	
3060.00	1.300	17.500	3059.59	46.10	45.69	6.12	3314117.21	1335439.98	40°14'55.356"N	104°22'28.681"W	0.11	
3156.00	1.600	29.100	3155.56	48.42	47.90	7.10	3314118.19	1335442.19	40°14'55.377"N	104°22'28.668"W	0.44	
3252.00	1.300	28.200	3251.53	50.70	50.03	8.26	3314119.35	1335444.32	40°14'55.398"N	104°22'28.653"W	0.31	
3347.00	1.400	21.800	3346.50	52.84	52.06	9.20	3314120.29	1335446.35	40°14'55.418"N	104°22'28.640"W	0.19	
3442.00	1.500	26.100	3441.47	55.15	54.25	10.18	3314121.27	1335448.54	40°14'55.440"N	104°22'28.627"W	0.16	
3538.00	1.500	34.000	3537.44	57.48	56.42	11.44	3314122.53	1335450.71	40°14'55.461"N	104°22'28.611"W	0.22	
3634.00	1.500	43.900	3633.41	59.63	58.37	13.01	3314124.10	1335452.66	40°14'55.480"N	104°22'28.590"W	0.27	
3730.00	1.300	46.900	3729.38	61.51	60.02	14.68	3314125.77	1335454.31	40°14'55.496"N	104°22'28.568"W	0.22	
3825.00	1.000	51.100	3824.36	62.96	61.28	16.11	3314127.20	1335455.56	40°14'55.508"N	104°22'28.550"W	0.33	
3922.00	1.100	54.900	3921.34	64.22	62.34	17.53	3314128.62	1335456.63	40°14'55.519"N	104°22'28.531"W	0.13	
4018.00	0.900	60.200	4017.33	65.31	63.25	18.94	3314130.03	1335457.54	40°14'55.528"N	104°22'28.513"W	0.23	
4116.00	0.800	63.900	4115.32	66.17	63.93	20.22	3314131.31	1335458.22	40°14'55.534"N	104°22'28.496"W	0.12	
4211.00	0.900	53.400	4210.31	67.07	64.67	21.42	3314132.51	1335458.96	40°14'55.541"N	104°22'28.481"W	0.19	
4308.00	0.800	50.900	4307.29	68.11	65.55	22.55	3314133.64	1335459.84	40°14'55.550"N	104°22'28.466"W	0.11	
4404.00	0.700	57.400	4403.29	68.99	66.29	23.57	3314134.66	1335460.58	40°14'55.557"N	104°22'28.453"W	0.14	
4501.00	0.600	104.900	4500.28	69.31	66.48	24.56	3314135.65	1335460.76	40°14'55.559"N	104°22'28.440"W	0.55	
4597.00	0.700	130.000	4596.27	68.95	65.97	25.49	3314136.58	1335460.26	40°14'55.554"N	104°22'28.428"W	0.31	
4692.00	1.200	144.800	4691.26	67.92	64.79	26.51	3314137.60	1335459.07	40°14'55.542"N	104°22'28.415"W	0.58	
4788.00	1.300	146.400	4787.24	66.38	63.06	27.69	3314138.78	1335457.34	40°14'55.525"N	104°22'28.400"W	0.11	
4885.00	1.300	152.200	4884.21	64.67	61.17	28.81	3314139.90	1335455.45	40°14'55.506"N	104°22'28.386"W	0.14	



Actual Wellpath Report

FRENCH LAKE 3-62-6-1B awp

Page 3 of 8



REFERENCE WELLPATH IDENTIFICATION

Operator	MARATHON OIL COMPANY	Slot	SLOT#01 FRENCH LAKE 3-62-6-1B (699'FSL & 460'FWL,SEC.6)
Area	COLORADO	Well	FRENCH LAKE 3-62-6-1B
Field	WELD COUNTY (NAD 83, GRID NORTH)	Wellbore	FRENCH LAKE 3-62-6-1B awb
Facility	SEC.06-T3N-R62W		

WELLPATH DATA (123 stations)

MD [ft]	Inclination [°]	Azimuth [°]	TVD [ft]	Vert Sect [ft]	North [ft]	East [ft]	Grid East [US ft]	Grid North [US ft]	Latitude	Longitude	DLS [°/100ft]	Comments
4982.00	1.300	161.100	4981.19	62.80	59.15	29.68	3314140.77	1335453.44	40°14'55.486"N	104°22'28.375"W	0.21	
5077.00	1.000	149.200	5076.17	61.20	57.42	30.46	3314141.55	1335451.71	40°14'55.469"N	104°22'28.365"W	0.40	
5173.00	0.800	159.500	5172.16	59.96	56.07	31.12	3314142.21	1335450.36	40°14'55.455"N	104°22'28.357"W	0.27	
5269.00	0.800	152.500	5268.15	58.83	54.85	31.67	3314142.75	1335449.14	40°14'55.443"N	104°22'28.350"W	0.10	
5364.00	0.900	165.700	5363.14	57.60	53.54	32.16	3314143.24	1335447.83	40°14'55.430"N	104°22'28.344"W	0.23	
5460.00	1.100	156.500	5459.12	56.12	51.96	32.71	3314143.80	1335446.25	40°14'55.414"N	104°22'28.337"W	0.27	
5556.00	1.100	166.000	5555.11	54.49	50.23	33.30	3314144.39	1335444.51	40°14'55.397"N	104°22'28.330"W	0.19	
5653.00	1.300	186.900	5652.09	52.52	48.23	33.39	3314144.48	1335442.52	40°14'55.377"N	104°22'28.329"W	0.49	
5749.00	1.400	187.100	5748.06	50.26	45.98	33.12	3314144.21	1335440.27	40°14'55.355"N	104°22'28.333"W	0.10	
5797.00	1.400	191.500	5796.04	49.09	44.83	32.93	3314144.02	1335439.12	40°14'55.344"N	104°22'28.335"W	0.22	
5882.00	0.900	24.300	5881.04	48.70	44.42	33.00	3314144.08	1335438.71	40°14'55.340"N	104°22'28.335"W	2.69	
5914.00	5.600	19.800	5912.98	50.47	46.12	33.63	3314144.72	1335440.41	40°14'55.356"N	104°22'28.326"W	14.70	
5947.00	9.400	18.500	5945.69	54.70	50.19	35.03	3314146.12	1335444.48	40°14'55.397"N	104°22'28.307"W	11.53	
5979.00	13.000	19.500	5977.07	60.80	56.06	37.06	3314148.15	1335450.35	40°14'55.454"N	104°22'28.280"W	11.27	
6011.00	16.400	21.300	6008.02	68.74	63.67	39.90	3314150.99	1335457.95	40°14'55.529"N	104°22'28.242"W	10.72	
6043.00	20.300	22.000	6038.39	78.53	73.03	43.63	3314154.71	1335467.31	40°14'55.621"N	104°22'28.193"W	12.21	
6075.00	23.600	19.800	6068.07	90.20	84.20	47.88	3314158.96	1335478.49	40°14'55.731"N	104°22'28.136"W	10.63	
6107.00	28.200	17.100	6096.85	103.96	97.46	52.27	3314163.36	1335491.75	40°14'55.861"N	104°22'28.077"W	14.84	
6140.00	32.200	14.900	6125.36	120.40	113.42	56.83	3314167.91	1335507.71	40°14'56.019"N	104°22'28.016"W	12.57	
6172.00	35.700	13.600	6151.90	138.18	130.74	61.22	3314172.30	1335525.02	40°14'56.189"N	104°22'27.957"W	11.17	
6204.00	40.000	12.600	6177.16	157.74	149.86	65.66	3314176.74	1335544.14	40°14'56.378"N	104°22'27.896"W	13.57	
6236.00	43.500	12.100	6201.03	178.99	170.67	70.21	3314181.30	1335564.96	40°14'56.583"N	104°22'27.834"W	10.99	
6268.00	46.100	12.100	6223.74	201.48	192.72	74.94	3314186.02	1335587.00	40°14'56.800"N	104°22'27.769"W	8.12	
6300.00	49.500	10.400	6245.23	225.15	215.97	79.55	3314190.64	1335610.25	40°14'57.029"N	104°22'27.706"W	11.33	
6332.00	52.000	9.000	6265.48	249.92	240.39	83.72	3314194.81	1335634.67	40°14'57.270"N	104°22'27.648"W	8.52	
6364.00	52.800	8.500	6285.00	275.27	265.45	87.58	3314198.66	1335659.73	40°14'57.517"N	104°22'27.595"W	2.79	
6396.00	56.200	8.800	6303.58	301.32	291.20	91.50	3314202.58	1335685.48	40°14'57.771"N	104°22'27.540"W	10.65	
6428.00	60.100	10.400	6320.47	328.49	317.99	96.04	3314207.12	1335712.27	40°14'58.035"N	104°22'27.477"W	12.91	
6459.00	64.000	10.800	6334.99	355.84	344.90	101.07	3314212.16	1335739.18	40°14'58.300"N	104°22'27.407"W	12.63	
6489.00	68.800	10.200	6347.00	383.30	371.93	106.08	3314217.16	1335766.20	40°14'58.567"N	104°22'27.339"W	16.10	
6523.00	73.100	10.100	6358.09	415.42	403.55	111.74	3314222.83	1335797.83	40°14'58.879"N	104°22'27.260"W	12.65	
6555.00	75.200	10.200	6366.83	446.18	433.85	117.17	3314228.25	1335828.13	40°14'59.177"N	104°22'27.185"W	6.57	
6587.00	77.400	9.900	6374.41	477.25	464.47	122.59	3314233.68	1335858.73	40°14'59.479"N	104°22'27.110"W	6.94	
6620.00	79.400	9.800	6381.05	509.57	496.31	128.12	3314239.20	1335890.58	40°14'59.793"N	104°22'27.034"W	6.07	
6651.00	81.100	9.500	6386.30	540.11	526.43	133.24	3314244.33	1335920.70	40°15'00.090"N	104°22'26.963"W	5.57	
6684.00	82.800	9.100	6390.92	572.78	558.68	138.52	3314249.61	1335952.94	40°15'00.408"N	104°22'26.890"W	5.29	
6715.00	83.900	8.600	6394.51	603.57	589.10	143.26	3314254.34	1335983.36	40°15'00.708"N	104°22'26.823"W	3.89	
6747.00	84.800	8.500	6397.66	635.41	620.59	147.99	3314259.08	1336014.85	40°15'01.019"N	104°22'26.757"W	2.83	
6779.00	85.700	8.200	6400.31	667.30	652.14	152.62	3314263.71	1336046.40	40°15'01.330"N	104°22'26.692"W	2.96	
6811.00	86.000	9.700	6402.62	699.21	683.67	157.59	3314268.67	1336077.93	40°15'01.641"N	104°22'26.623"W	4.77	
6843.00	86.200	8.600	6404.80	731.13	715.19	162.67	3314273.75	1336109.45	40°15'01.951"N	104°22'26.553"W	3.49	
6875.00	86.600	8.000	6406.81	763.07	746.79	167.28	3314278.36	1336141.05	40°15'02.263"N	104°22'26.488"W	2.25	
6895.00	86.900	8.300	6407.94	783.04	766.56	170.11	3314281.19	1336160.81	40°15'02.458"N	104°22'26.448"W	2.12	
6989.00	86.900	9.000	6413.03	876.90	859.35	184.22	3314295.30	1336253.60	40°15'03.373"N	104°22'26.251"W	0.74	
7085.00	88.400	8.900	6416.96	972.81	954.10	199.15	3314310.23	1336348.35	40°15'04.308"N	104°22'26.043"W	1.57	



Actual Wellpath Report

FRENCH LAKE 3-62-6-1B awp

Page 4 of 8



REFERENCE WELLPATH IDENTIFICATION

Operator	MARATHON OIL COMPANY	Slot	SLOT#01 FRENCH LAKE 3-62-6-1B (699'FSL & 460'FWL,SEC.6)
Area	COLORADO	Well	FRENCH LAKE 3-62-6-1B
Field	WELD COUNTY (NAD 83, GRID NORTH)	Wellbore	FRENCH LAKE 3-62-6-1B awb
Facility	SEC.06-T3N-R62W		

WELLPATH DATA (123 stations)

MD [ft]	Inclination [°]	Azimuth [°]	TVD [ft]	Vert Sect [ft]	North [ft]	East [ft]	Grid East [US ft]	Grid North [US ft]	Latitude	Longitude	DLS [°/100ft]	Comments
7180.00	88.100	7.000	6419.87	1067.76	1048.14	212.28	3314323.36	1336442.38	40°15'05.235"N	104°22'25.858"W	2.02	
7276.00	89.400	7.900	6421.96	1163.72	1143.30	224.72	3314335.80	1336537.54	40°15'06.174"N	104°22'25.682"W	1.65	
7373.00	89.400	7.400	6422.98	1260.71	1239.43	237.63	3314348.71	1336633.67	40°15'07.122"N	104°22'25.500"W	0.52	
7469.00	88.600	5.700	6424.65	1356.65	1334.79	248.58	3314359.66	1336729.02	40°15'08.063"N	104°22'25.343"W	1.96	
7565.00	88.500	7.700	6427.08	1452.58	1430.10	259.78	3314370.86	1336824.32	40°15'09.003"N	104°22'25.183"W	2.09	
7661.00	91.500	9.300	6427.08	1548.56	1525.03	273.97	3314385.04	1336919.25	40°15'09.940"N	104°22'24.985"W	3.54	
7757.00	92.000	9.000	6424.15	1644.51	1619.76	289.23	3314400.30	1337013.98	40°15'10.874"N	104°22'24.772"W	0.61	
7854.00	91.400	8.500	6421.27	1741.46	1715.59	303.97	3314415.05	1337109.80	40°15'11.819"N	104°22'24.566"W	0.81	
7950.00	91.600	8.800	6418.76	1837.42	1810.47	318.41	3314429.48	1337204.67	40°15'12.754"N	104°22'24.365"W	0.38	
8046.00	90.900	7.800	6416.66	1933.40	1905.44	332.26	3314443.34	1337299.64	40°15'13.691"N	104°22'24.170"W	1.27	
8139.00	88.900	5.700	6416.83	2026.36	1997.78	343.19	3314454.27	1337391.98	40°15'14.602"N	104°22'24.014"W	3.12	
8235.00	89.900	5.800	6417.83	2122.26	2093.29	352.81	3314463.88	1337487.49	40°15'15.545"N	104°22'23.875"W	1.05	
8331.00	88.700	5.100	6419.00	2218.13	2188.85	361.93	3314473.00	1337583.04	40°15'16.488"N	104°22'23.741"W	1.45	
8427.00	89.200	5.100	6420.76	2313.97	2284.45	370.46	3314481.53	1337678.64	40°15'17.431"N	104°22'23.616"W	0.52	
8523.00	87.700	2.800	6423.36	2409.66	2380.18	377.07	3314488.14	1337774.36	40°15'18.376"N	104°22'23.515"W	2.86	
8620.00	88.100	6.700	6426.92	2506.39	2476.76	385.10	3314496.17	1337870.94	40°15'19.330"N	104°22'23.395"W	4.04	
8717.00	87.800	7.000	6430.39	2603.30	2573.01	396.66	3314507.73	1337967.18	40°15'20.279"N	104°22'23.231"W	0.44	
8813.00	88.400	6.900	6433.57	2699.22	2668.25	408.27	3314519.34	1338062.42	40°15'21.219"N	104°22'23.065"W	0.63	
8909.00	88.200	7.200	6436.42	2795.16	2763.48	420.04	3314531.12	1338157.65	40°15'22.158"N	104°22'22.898"W	0.38	
9005.00	88.200	6.000	6439.43	2891.07	2858.80	431.07	3314542.14	1338252.96	40°15'23.099"N	104°22'22.740"W	1.25	
9102.00	88.300	8.600	6442.39	2988.00	2954.96	443.39	3314554.46	1338349.11	40°15'24.048"N	104°22'22.565"W	2.68	
9198.00	90.700	7.900	6443.23	3083.99	3049.95	457.17	3314568.23	1338444.11	40°15'24.984"N	104°22'22.372"W	2.60	
9293.00	90.900	8.600	6441.91	3178.98	3143.96	470.80	3314581.86	1338538.11	40°15'25.912"N	104°22'22.181"W	0.77	
9390.00	90.700	8.600	6440.55	3275.97	3239.86	485.30	3314596.37	1338634.00	40°15'26.857"N	104°22'21.978"W	0.21	
9486.00	92.000	8.700	6438.29	3371.94	3334.74	499.73	3314610.80	1338728.88	40°15'27.793"N	104°22'21.776"W	1.36	
9583.00	91.700	8.300	6435.16	3468.89	3430.62	514.06	3314625.13	1338824.76	40°15'28.739"N	104°22'21.576"W	0.52	
9679.00	91.000	6.100	6432.90	3564.84	3525.83	526.09	3314637.16	1338919.96	40°15'29.678"N	104°22'21.405"W	2.40	
9774.00	90.100	6.400	6431.98	3659.77	3620.26	536.43	3314647.50	1339014.39	40°15'30.610"N	104°22'21.256"W	1.00	
9870.00	89.400	5.300	6432.40	3755.69	3715.76	546.22	3314657.28	1339109.88	40°15'31.552"N	104°22'21.114"W	1.36	
9966.00	91.400	5.300	6431.73	3851.55	3811.34	555.08	3314666.15	1339205.46	40°15'32.496"N	104°22'20.984"W	2.08	
10062.00	90.600	5.100	6430.06	3947.40	3906.93	563.78	3314674.85	1339301.05	40°15'33.439"N	104°22'20.856"W	0.86	
10159.00	89.700	5.300	6429.80	4044.26	4003.53	572.57	3314683.64	1339397.64	40°15'34.392"N	104°22'20.727"W	0.95	LAST BHI MWD SURVEY
10215.00	89.700	5.300	6430.10	4100.19	4059.29	577.75	3314688.81	1339453.40	40°15'34.943"N	104°22'20.651"W	0.00	PROJECTION TO BIT



Actual Wellpath Report

FRENCH LAKE 3-62-6-1B awp

Page 5 of 8



REFERENCE WELLPATH IDENTIFICATION

Operator	MARATHON OIL COMPANY	Slot	SLOT#01 FRENCH LAKE 3-62-6-1B (699'FSL & 460'FWL,SEC.6)
Area	COLORADO	Well	FRENCH LAKE 3-62-6-1B
Field	WELD COUNTY (NAD 83, GRID NORTH)	Wellbore	FRENCH LAKE 3-62-6-1B awb
Facility	SEC.06-T3N-R62W		

HOLE & CASING SECTIONS - Ref Wellbore: FRENCH LAKE 3-62-6-1B awb Ref Wellpath: FRENCH LAKE 3-62-6-1B awp

String/Diameter	Start MD [ft]	End MD [ft]	Interval [ft]	Start TVD [ft]	End TVD [ft]	Start N/S [ft]	Start E/W [ft]	End N/S [ft]	End E/W [ft]
9.625in Casing Surface	31.00	717.00	686.00	31.00	717.00	5.81	0.18	5.81	0.18
8.75in Open Hole	717.00	6945.00	6228.00	717.00	6410.65	5.81	0.18	815.94	177.47
7in Casing Intermediate	31.00	6945.00	6914.00	31.00	6410.65	5.81	0.18	815.94	177.47
6in Open Hole	6945.00	10215.00	3270.00	6410.65	6430.10	815.94	177.47	4059.29	577.75



Actual Wellpath Report

FRENCH LAKE 3-62-6-1B awp

Page 6 of 8



REFERENCE WELLPATH IDENTIFICATION			
Operator	MARATHON OIL COMPANY	Slot	SLOT#01 FRENCH LAKE 3-62-6-1B (699'FSL & 460'FWL,SEC.6)
Area	COLORADO	Well	FRENCH LAKE 3-62-6-1B
Field	WELD COUNTY (NAD 83, GRID NORTH)	Wellbore	FRENCH LAKE 3-62-6-1B awb
Facility	SEC.06-T3N-R62W		

TARGETS									
Name	MD [ft]	TVD [ft]	North [ft]	East [ft]	Grid East [US ft]	Grid North [US ft]	Latitude	Longitude	Shape
FRENCH LAKE 3-62-6-1B BHL ON EXCEL (REV-1)		6319.00	4091.21	593.43	3314704.49	1339485.32	40°15'35.256"N	104°22'20.444"W	point
FRENCH LAKE 3-62-6-1B BHL ON PLAT (480'FNL & 1100'FWL, REV-2)		6319.00	4091.33	593.58	3314704.64	1339485.44	40°15'35.257"N	104°22'20.442"W	point
FRENCH LAKE 3-62-6-1B HARDLINE (460' SETBACKS)		6321.00	0.00	0.00	3314111.09	1335394.29	40°14'54.905"N	104°22'28.767"W	polygon
FRENCH LAKE 3-62-6-1B PT#2 (REV-1)		6329.00	1687.28	244.57	3314355.65	1337081.49	40°15'11.546"N	104°22'25.337"W	point
FRENCH LAKE 3-62-6-1B BHL ON PLAT (480'FNL & 1100'FWL, REV-1)		6352.00	4091.33	593.58	3314704.64	1339485.44	40°15'35.257"N	104°22'20.442"W	point
FRENCH LAKE 3-62-6-1B SECTION LINES		6352.00	0.00	0.00	3314111.09	1335394.29	40°14'54.905"N	104°22'28.767"W	polygon
FRENCH LAKE 3-62-6-1B HEEL (REV-1)		6355.00	567.91	81.80	3314192.89	1335962.17	40°15'00.506"N	104°22'27.619"W	point
FRENCH LAKE 3-62-6-1B BHL ON PLAT (480'FNL & 1100'FWL, REV-3)		6372.00	4091.33	593.58	3314704.64	1339485.44	40°15'35.257"N	104°22'20.442"W	point
FRENCH LAKE 3-62-6-1B BHL ON PLAT (480'FNL & 1100'FWL, REV-4)		6392.00	4091.33	593.58	3314704.64	1339485.44	40°15'35.257"N	104°22'20.442"W	point
FRENCH LAKE 3-62-6-1B PT#2 (REV-2)		6402.00	1687.28	244.57	3314355.65	1337081.49	40°15'11.546"N	104°22'25.337"W	point
FRENCH LAKE 3-62-6-1B BHL ON PLAT (480'FNL & 1100'FWL, REV-5)		6407.00	4091.33	593.58	3314704.64	1339485.44	40°15'35.257"N	104°22'20.442"W	point
FRENCH LAKE 3-62-6-1B PT#4 FAULT		6409.00	3494.48	505.50	3314616.57	1338888.61	40°15'29.371"N	104°22'21.676"W	point
FRENCH LAKE 3-62-6-1B PT#3 POSSIBLE FAULT		6413.00	2672.49	389.08	3314500.15	1338066.66	40°15'21.263"N	104°22'23.312"W	point
FRENCH LAKE 3-62-6-1B PT#2 (REV-3)		6417.00	1687.28	244.57	3314355.65	1337081.49	40°15'11.546"N	104°22'25.337"W	point
FRENCH LAKE 3-62-6-1B HEEL (REV-2)		6428.00	567.91	81.80	3314192.89	1335962.17	40°15'00.506"N	104°22'27.619"W	point
FRENCH LAKE 3-62-6-1B HEEL (REV-3)		6443.00	567.91	81.80	3314192.89	1335962.17	40°15'00.506"N	104°22'27.619"W	point
SLOT#02 CHRISTENSEN #6-9 (2310'FSL & 990'FEL, SEC.6, VERT, TD AT 7047'MD)		7047.00	1750.98	3824.52	3317935.44	1337145.19	40°15'11.724"N	104°21'39.158"W	circle



Actual Wellpath Report

FRENCH LAKE 3-62-6-1B awp

Page 7 of 8

**REFERENCE WELLPATH IDENTIFICATION**

Operator	MARATHON OIL COMPANY	Slot	SLOT#01 FRENCH LAKE 3-62-6-1B (699'FSL & 460'FWL,SEC.6)
Area	COLORADO	Well	FRENCH LAKE 3-62-6-1B
Field	WELD COUNTY (NAD 83, GRID NORTH)	Wellbore	FRENCH LAKE 3-62-6-1B awb
Facility	SEC.06-T3N-R62W		

WELLPATH COMPOSITION - Ref Wellbore: FRENCH LAKE 3-62-6-1B awb Ref Wellpath: FRENCH LAKE 3-62-6-1B awp

Start MD [ft]	End MD [ft]	Positional Uncertainty Model	Log Name/Comment	Wellbore
771.00	6895.00	NaviTrak (Standard)	BHI MWD SURVEYS NAVITRAK 8.75 HOLE <802-6895>	FRENCH LAKE 3-62-6-1B awb
6895.00	10159.00	OnTrak (Standard)	BHI MWD SURVEYS ONTRAK 6 HOLE <6989-10159>	FRENCH LAKE 3-62-6-1B awb
10159.00	10215.00	Blind Drilling (std)	Projection to bit	FRENCH LAKE 3-62-6-1B awb



Actual Wellpath Report

FRENCH LAKE 3-62-6-1B awp

Page 8 of 8

**REFERENCE WELLPATH IDENTIFICATION**

Operator	MARATHON OIL COMPANY	Slot	SLOT#01 FRENCH LAKE 3-62-6-1B (699'FSL & 460'FWL,SEC.6)
Area	COLORADO	Well	FRENCH LAKE 3-62-6-1B
Field	WELD COUNTY (NAD 83, GRID NORTH)	Wellbore	FRENCH LAKE 3-62-6-1B awb
Facility	SEC.06-T3N-R62W		

WELLPATH COMMENTS

MD [ft]	Inclination [°]	Azimuth [°]	TVD [ft]	Comment
771.00	0.900	1.800	770.97	TIE ON POINT
10159.00	89.700	5.300	6429.80	LAST BHI MWD SURVEY
10215.00	89.700	5.300	6430.10	PROJECITON TO BIT