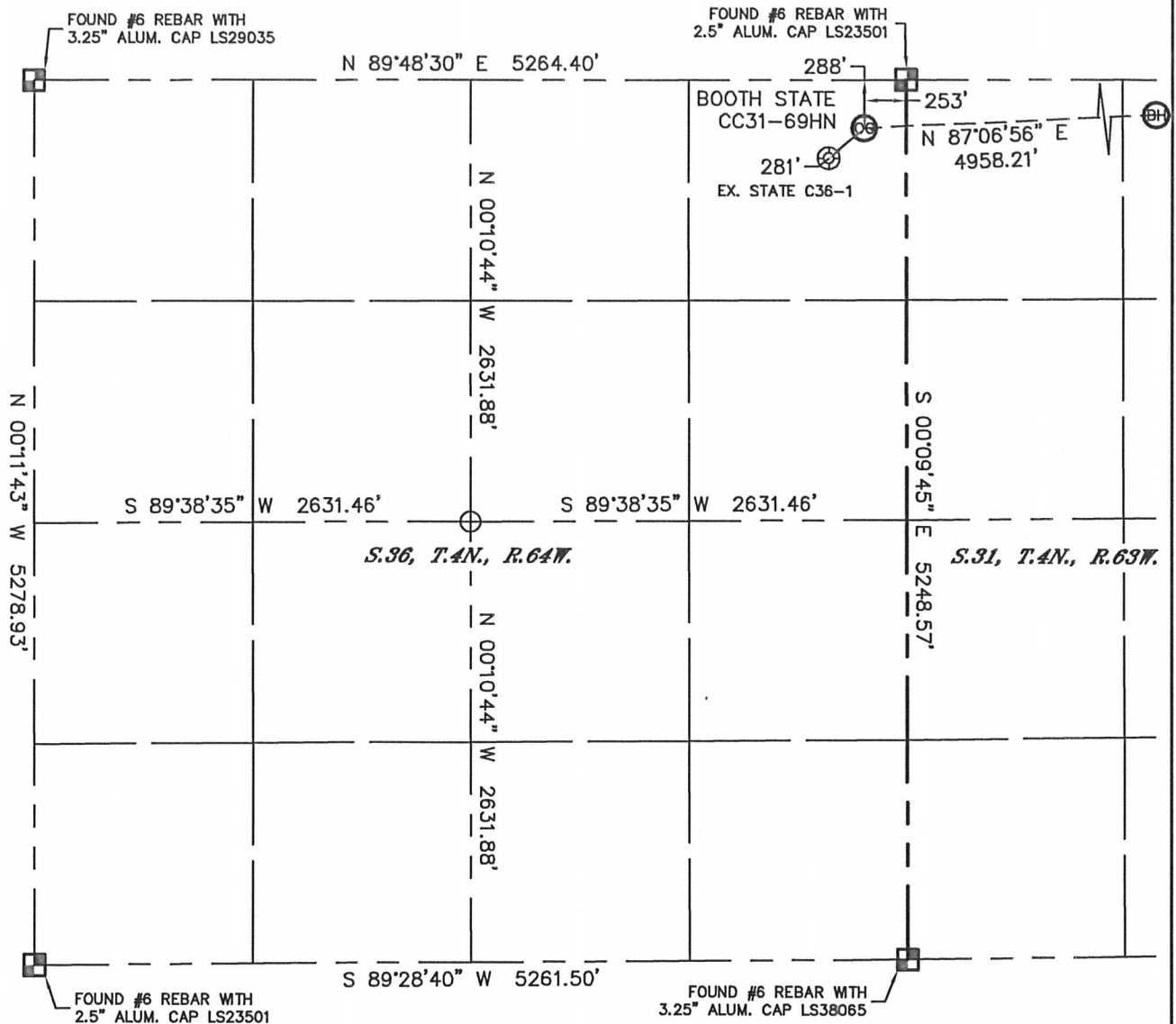


Lat40°, Inc. 1635 Foxtrail Drive, Suite 325 Loveland, CO 970-776-3321

WELL LOCATION CERTIFICATE

THIS MAP DOES NOT REPRESENT A BOUNDARY SURVEY

SECTION: 36
TOWNSHIP: 4N
RANGE: 64W



In accordance with a request from Matt Verbit with Noble Energy Inc., Lat40°, Inc. has determined the surface location of the BOOTH STATE CC31-69HN to be 288' from the NORTH line and 253' from the EAST line as measured at right angles from the section lines of Section 36, Township 4 North, Range 64 West and the bottom hole to be 75' from the NORTH line and 535' from the EAST line as measured at right angles from the section lines of Section 31, Township 4 North, Range 63 West of the Sixth Principal Meridian, County of Weld, State of Colorado.

I hereby state that this Well Location Certificate was prepared by me, or under my direct supervision, that the fieldwork was completed on 11/3/11, for and on behalf of Noble Energy Inc. That this is not a Land Survey Plat or an Improvement Survey Plat, and that it is not to be relied upon for establishment of fence, building, or other future Improvement lines.

NOTE:

- 1) Bearings shown are Grid Bearings of the Colorado State Plane Coordinate System, North Zone, North American Datum 1983/2007. The lineal dimensions as contained herein are based upon the "U.S. Survey Foot."
- 2) Ground elevations are based on an observed GPS elevation (NAVD 1988 DATUM).
- 3) NEAREST EXISTING WELL: STATE C36-1, 281'
- 4) IMPROVEMENTS: See LOCATION DRAWING for all visible Improvements within 400' of disturbed area.
- 5) SURFACE USE: RANGELAND
- 6) INSTRUMENT OPERATOR: ADAM KELLY

NOTE

According to Colorado law, you must commence any legal action based upon any defect in this W.L.C. within three years after you discover such defect. In no event, may any action based upon any defect in this survey be commenced more than ten years after the date of the certificate shown hereon. (13-80-105 C.R.S.)

LEGEND

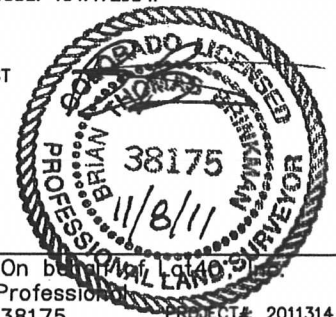
- = ALIQUOT MONUMENT AS DESCRIBED
- = CALCULATED POSITION

SURFACE LOCATION
LATITUDE: 40.27533°N
LONGITUDE: 104.49073°W
PDOP: 1.3
ELEV: 4758'
1/4, 1/4: NE1/4NE1/4
NEAREST PROPERTY LINE: 253' EAST

BOTTOM HOLE
LATITUDE: 40.27585°N
LONGITUDE: 104.47298°W

(SHEET 1 OF 2)

Brian T. Brinkman—On behalf of Lat40°
Colorado Licensed Professional
Land Surveyor No. 38175 PROJECT# 2011314

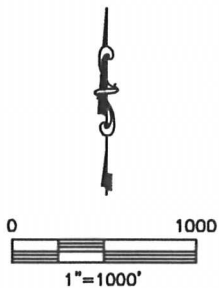
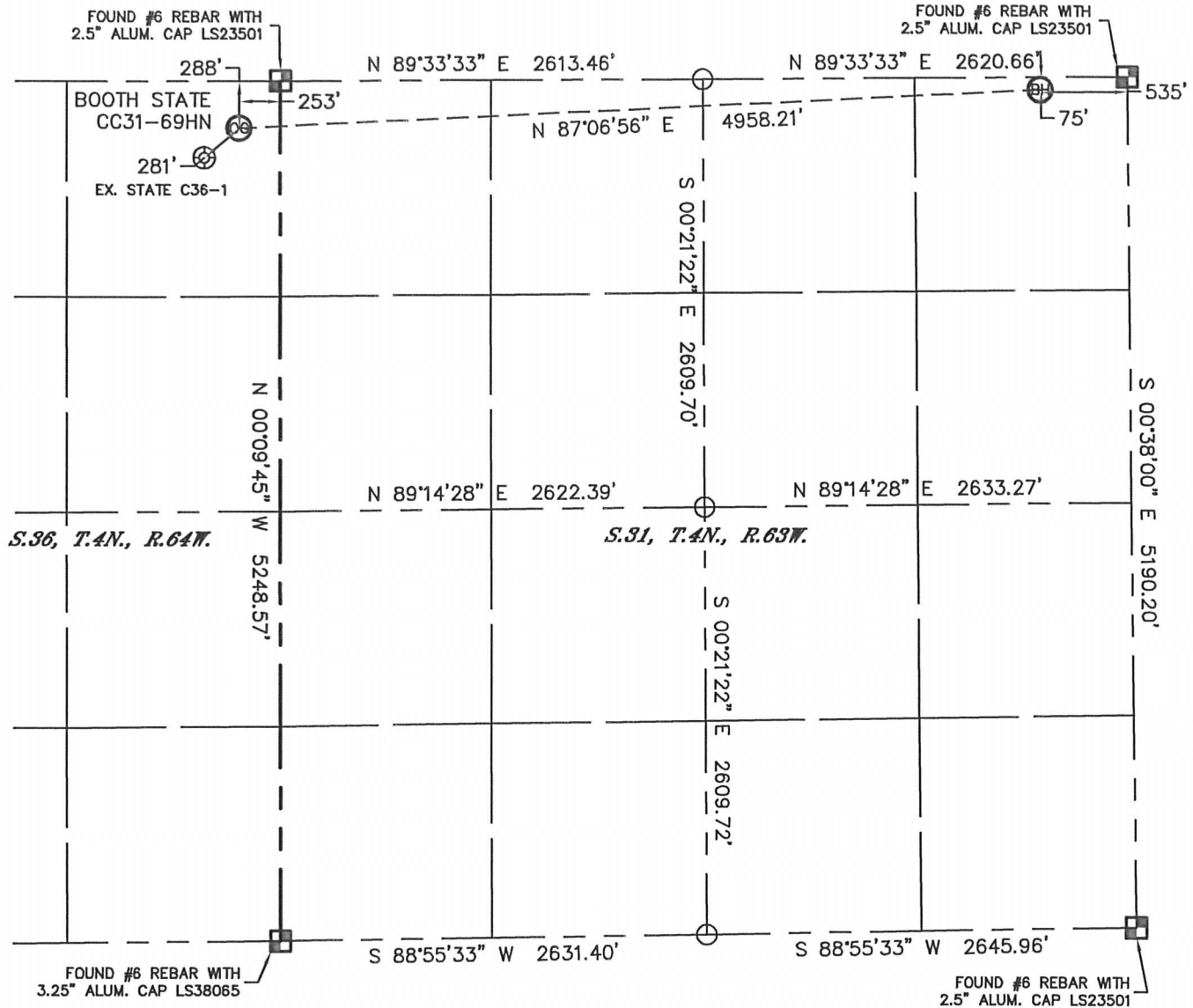


Lat40°, Inc. 1635 Foxtrail Drive, Suite 325 Loveland, CO 970-776-3321

WELL LOCATION CERTIFICATE

THIS MAP DOES NOT REPRESENT A BOUNDARY SURVEY



SECTION: 36
TOWNSHIP: 4N
RANGE: 64W



NOTE

According to Colorado law, you must commence any legal action based upon any defect in this W.L.C. within three years after you discover such defect. In no event, may any action based upon any defect in this survey be commenced more than ten years after the date of the certificate shown hereon. (13-80-105 C.R.S.)

LEGEND

-  = ALIQUOT MONUMENT AS DESCRIBED
-  = CALCULATED POSITION

(SHEET 2 OF 2)

Brian T. Brinkman—On behalf of Lat40°, Inc.
Colorado Licensed Professional
Land Surveyor No. 38175

PROJECT# 2011314

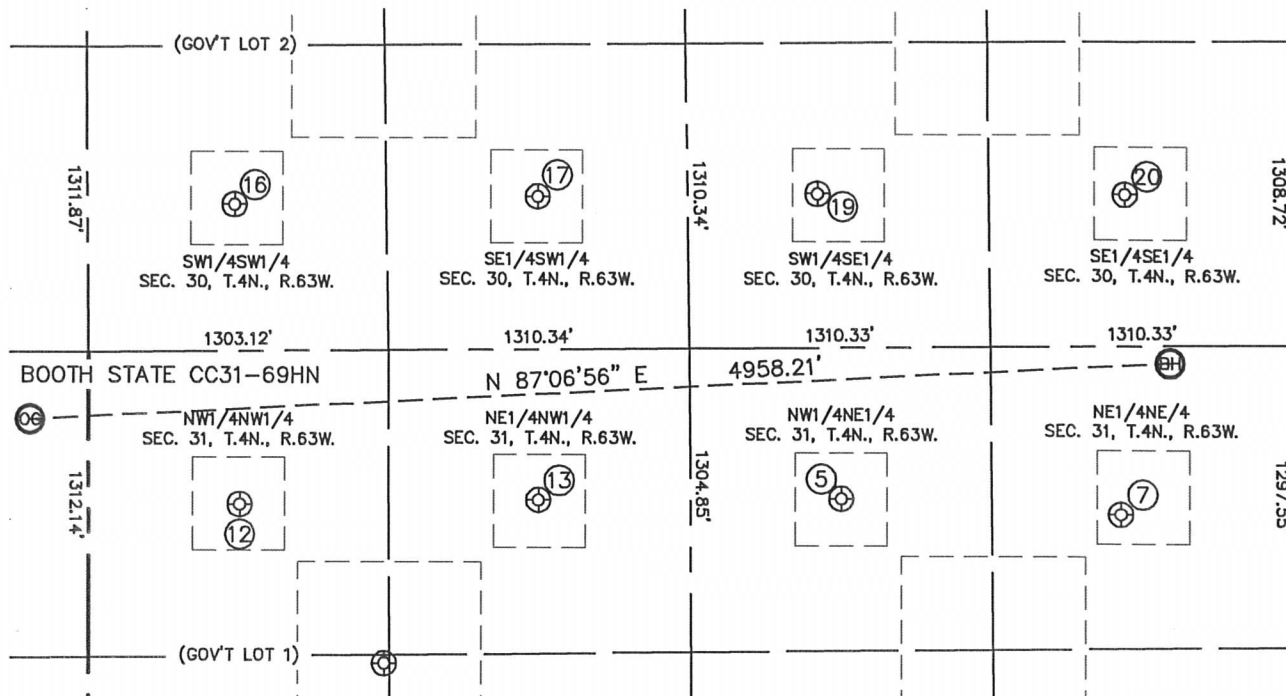


Lat40°, Inc. 1635 Foxtrail Drive, Suite 325 Loveland, CO 970-776-3321

SITE SKETCH

BOOTH STATE CC31-69HN

SECTION: 36
TOWNSHIP: 4N
RANGE: 64W



⑤

BOOTH 31-31
NW1/4NE1/4
649' FNL
1968' FEL
LAT-40.27430°N
LONG-104.47811°W
PDOP: 2.2
ELEV: 4784'

⑦

BOOTH 41-31
NE1/4NE1/4
723' FNL
755' FEL
LAT-40.27408°N
LONG-104.47377°W
PDOP: 2.1
ELEV: 4790'

⑫

BOOTH 11-31U
NW1/4NW1/4
657' FNL
656' FWL
LAT-40.27430°N
LONG-104.48748°W
PDOP: 1.2
ELEV: 4769'

⑬

BOOTH 21-31U
NE1/4NW1/4
647' FNL
1957' FWL
LAT-40.27432°N
LONG-104.48282°W
PDOP: 1.4
ELEV: 4801'

⑯

SPIKE STATE CC30-13
SW1/4SW1/4
630' FSL
639' FWL
LAT-40.27783°N
LONG-104.48752°W
PDOP: 2.5
ELEV: 4776'

⑰

SPIKE ST GWS CC30-14
SE1/4SW1/4
656' FSL
1959' FWL
LAT-40.27789°N
LONG-104.48279°W
PDOP: 2.6
ELEV: 4775'

⑲

SPIKE ST GWS CC30-15
SW1/4SE1/4
662' FSL
2059' FEL
LAT-40.27789°N
LONG-104.47843°W
PDOP: 1.7
ELEV: 4790'

⑳

SPIKE ST GWS CC30-16
SE1/4SE1/4
652' FSL
725' FEL
LAT-40.27785°N
LONG-104.47365°W
PDOP: 1.5
ELEV: 4788'

