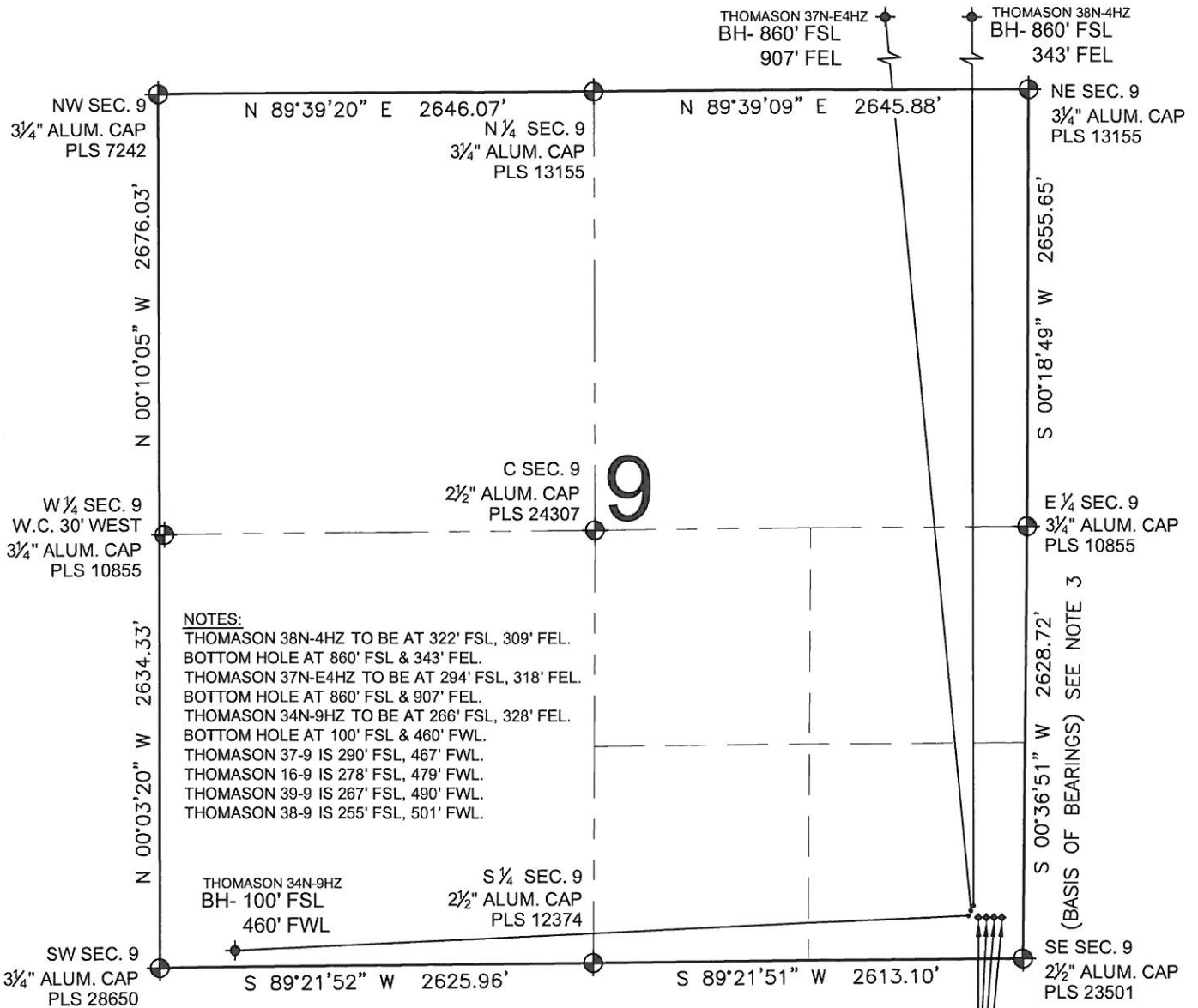


PAD DRAWING: THOMASON 3 PAD SESE

SECTION 9, TOWNSHIP 2 NORTH, RANGE 65 WEST, 6TH P.M.



NOTES:

- THOMASON 38N-4HZ TO BE AT 322' FSL, 309' FEL.
- BOTTOM HOLE AT 860' FSL & 343' FEL.
- THOMASON 37N-E4HZ TO BE AT 294' FSL, 318' FEL.
- BOTTOM HOLE AT 860' FSL & 907' FEL.
- THOMASON 34N-9HZ TO BE AT 266' FSL, 328' FEL.
- BOTTOM HOLE AT 100' FSL & 460' FWL.
- THOMASON 37-9 IS 290' FSL, 467' FWL.
- THOMASON 16-9 IS 278' FSL, 479' FWL.
- THOMASON 39-9 IS 267' FSL, 490' FWL.
- THOMASON 38-9 IS 255' FSL, 501' FWL.

NOTES:

1. THIS FIELD SURVEY CONFORMS TO THE MINIMUM STANDARDS SET BY THE C.O.G.C.C., RULE NO. 215
2. HORIZONTAL POSITIONS AND ORTHOMETRIC ELEVATIONS SHOWN AT THE WELL HEAD, ARE BASED ON GPS-RTK POSITIONS DERIVED FROM MINIMUM 2-HOUR STATIC OBSERVATIONS CORRECTED BY THE NATIONAL GEODETIC SURVEY ONLINE POSITIONING USER SERVICE, O.P.U.S. DATUM: HORIZONTAL = NAD83/2007, VERTICAL = NAVD88
3. THE BASIS OF BEARINGS ARE STATE PLANE COORDINATE SYSTEM GRID BEARINGS SHOWN HEREON BETWEEN THE DESCRIBED THE MONUMENTS SHOWN HEREON.
4. GRID DISTANCES ARE SHOWN, AS MEASURED IN THE FIELD, WITH TIES TO WELLS MEASURED PERPENDICULAR TO SECTION LINES.

LEGEND

- ⊕ = EXISTING MONUMENT
- ⬥ = PROPOSED WELL
- ⬠ = BOTTOM HOLE
- ◆ = EXISTING WELL
- BH = BOTTOM HOLE

THOMASON 37-9
THOMASON 16-9
THOMASON 39-9
THOMASON 38-9

PREPARED BY:



KERR-MCGEE OIL & GAS ONSHORE LP

FIELD DATE: 12-09-11	PAD NAME: THOMASON 3 PAD SESE
DRAWING DATE: 12-19-11	SURFACE LOCATION: WELD COUNTY, COLORADO
BY: SMF	SE 1/4 SE 1/4, SEC. 9, T2N, R65W, 6TH P.M.

