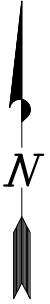
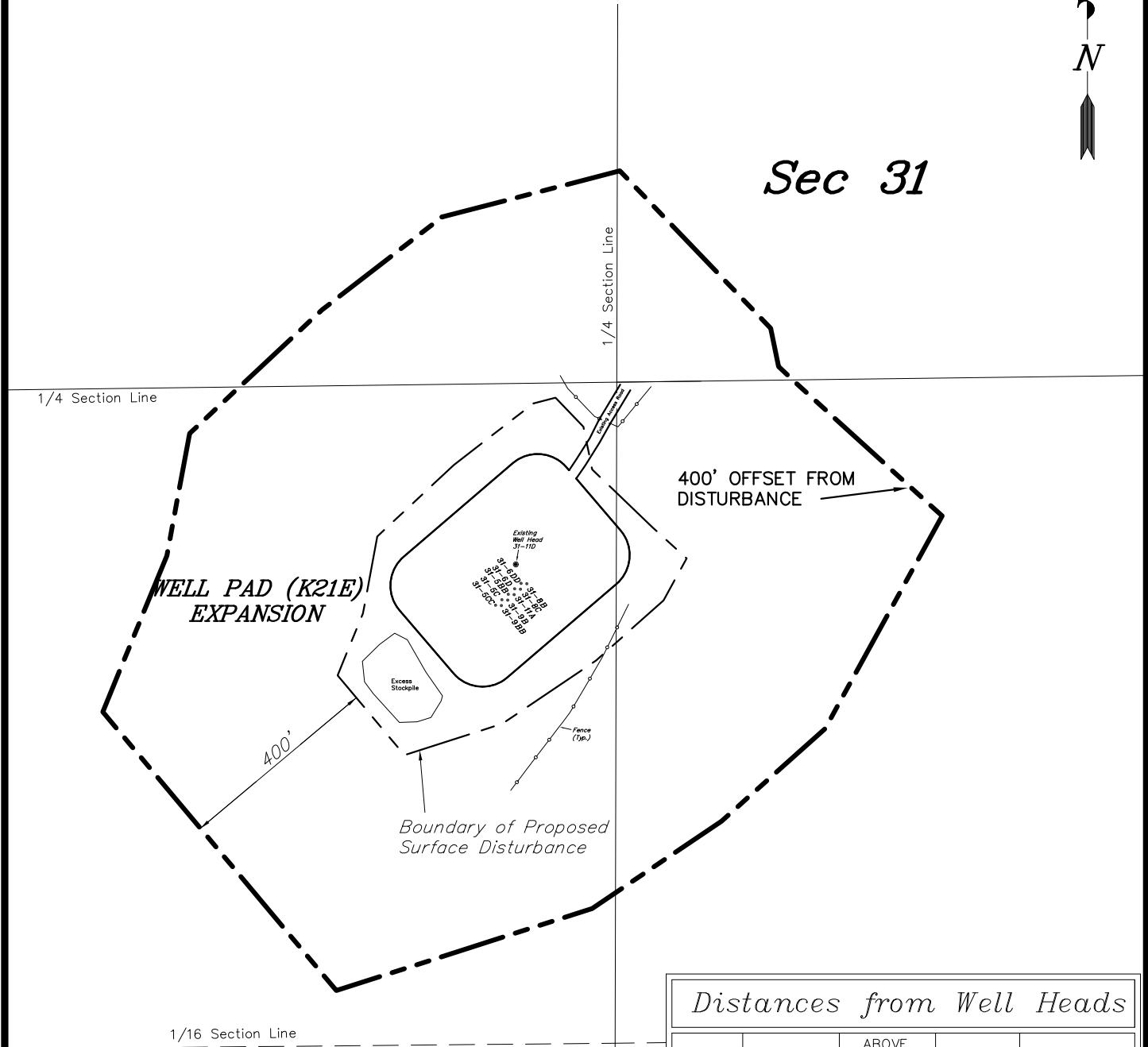


ENCANA OIL & GAS (USA) INC

SURFACE DISTURBANCE AREA WELL PAD (K31E) EXPANSION Section 31, T7S, R92W, 6th P.M.



Sec 31



Distances from Well Heads

WELL	BUILDING	ABOVE GROUND UTILITY	PUBLIC ROAD	RAILROAD
31-8D	5,305'	5,305'	5,305'	9.42 MILES
31-6DD	5,305'	5,305'	5,305'	9.42 MILES
31-8C	5,316'	5,316'	5,316'	9.42 MILES
31-6D	5,316'	5,316'	5,316'	9.42 MILES
31-11A	5,328'	5,328'	5,328'	9.42 MILES
31-5BB	5,328'	5,328'	5,328'	9.42 MILES
31-9B	5,339'	5,339'	5,339'	9.42 MILES
31-5C	5,339'	5,339'	5,339'	9.42 MILES
31-9BB	5,351'	5,351'	5,351'	9.42 MILES
31-5CC	5,351'	5,351'	5,351'	9.42 MILES

SURVEYED BY: C.D.S. DATE SURVEYED: 11-13-10
DRAWN BY: M.W. DATE DRAWN: 11-22-11
SCALE: 1" = 100' REVISED: M.W. - 01-13-12

Tri State (435) 781-2501
Land Surveying, Inc.
180 NORTH VERNAL AVE. VERNAL, UTAH 84078

SHEET
2k
OF 11