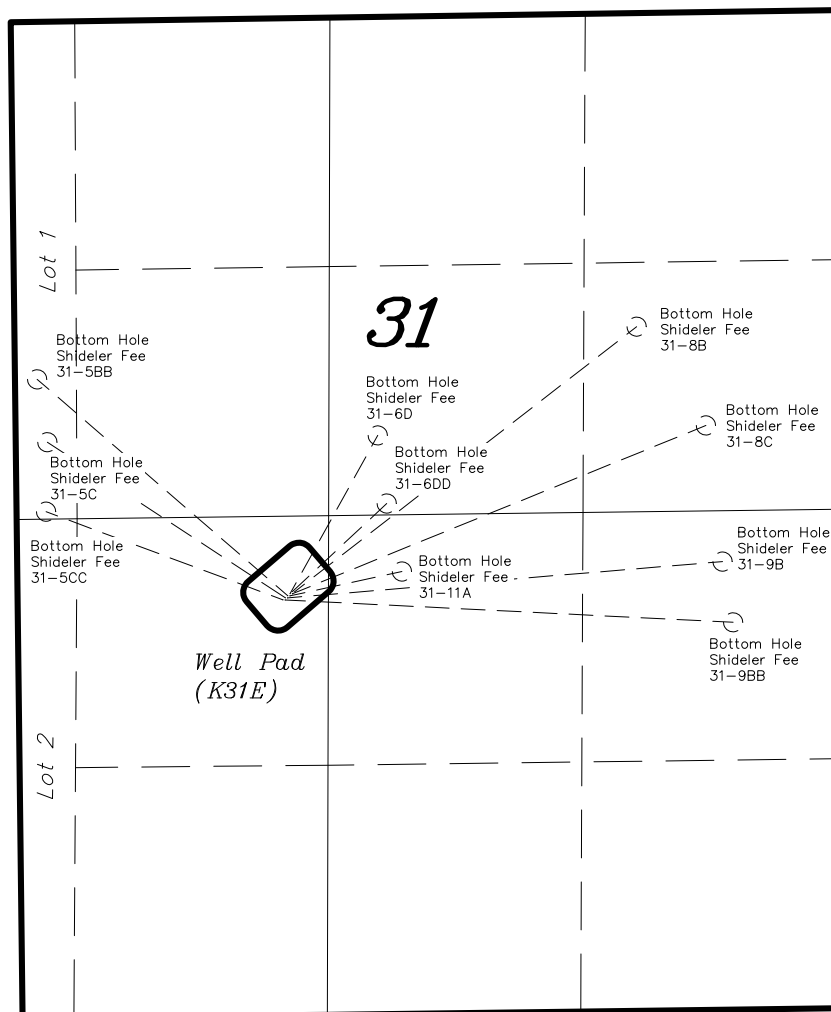


T7S, R92W, 6th P.M.

ENCANA OIL & GAS (USA) INC

***GENERAL MULTI WELL PLAN
SECTION DRILLING MAP***

***WELL PAD (K31E)
T7S, R92W, 6th P.M.***



TRI STATE LAND SURVEYING & CONSULTING

180 NORTH VERNAL AVE. — VERNAL, UTAH 84078
(435) 781-2501

DATE SURVEYED:
11-13-10

SURVEYED BY: C.D.S.

SHEET

DATE DRAWN:
11-23-11

DRAWN BY: M.W.

1

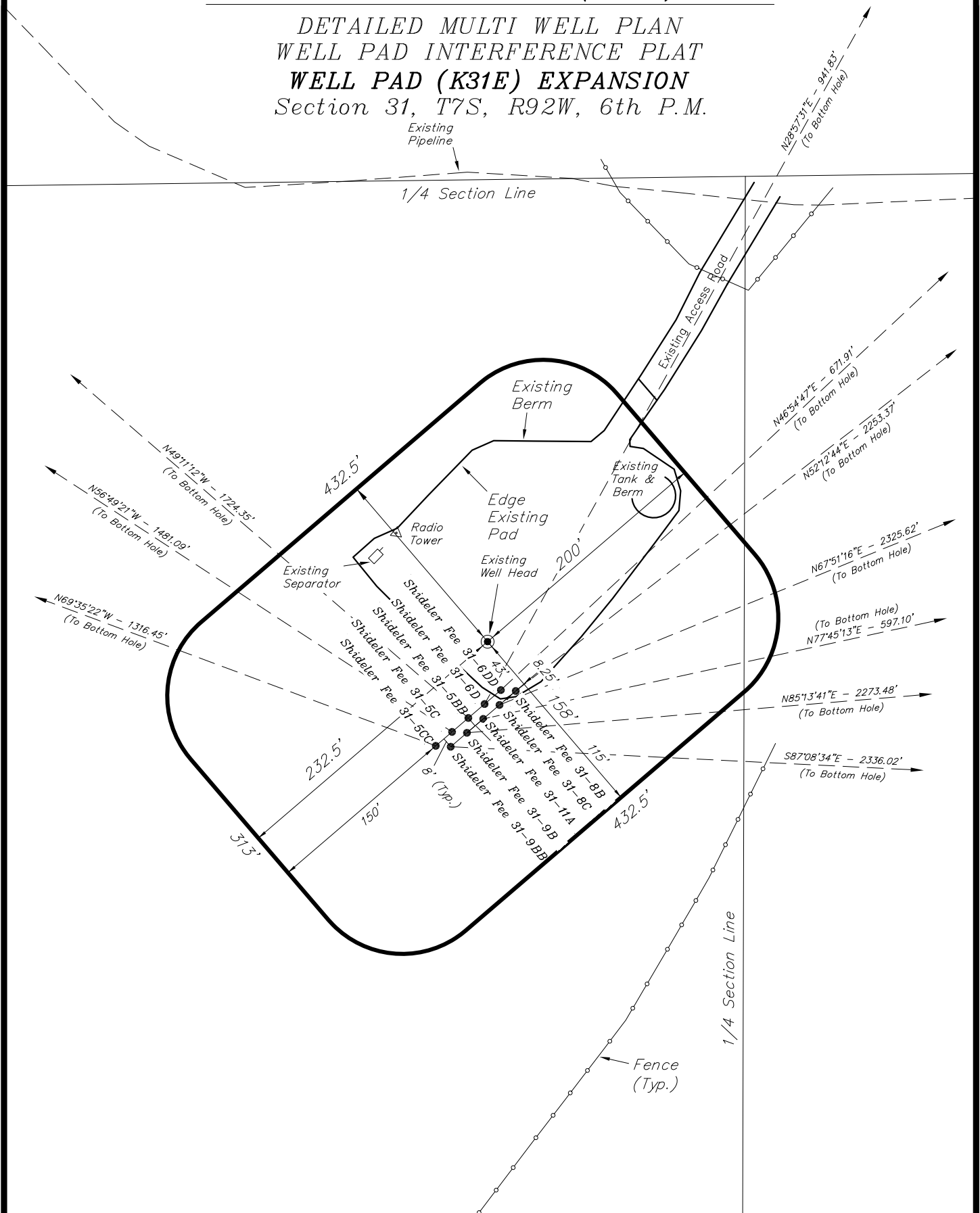
REVISED:
01-13-12 — M.W.

SCALE: 1" = 1000'

OF 11

EnCana OIL & GAS (USA) INC

DETAILED MULTI WELL PLAN WELL PAD INTERFERENCE PLAT WELL PAD (K31E) EXPANSION Section 31, T7S, R92W, 6th P.M.



SURVEYED BY: C.D.S.	DATE SURVEYED: 11-13-10
DRAWN BY: M.W.	DATE DRAWN: 11-22-11
SCALE: 1" = 100'	REVISED: M.W. - 01-13-12

Tri State
Land Surveying, Inc.
180 NORTH VERNAL AVE. VERNAL, UTAH 84078
(435) 781-2501

SHEET
3a
OF 11

EnCana OIL & GAS (USA) INC

DETAILED MULTI WELL PLAN WELL PAD INTERFERENCE PLAT WELL PAD (K31E) EXPANSION Section 31, T7S, R92W, 6th P.M.

TOP HOLE FOOTAGES

SHIDELER FEE 31-8B (K31E)
2204' FSL & 1444' FWL

SHIDELER FEE 31-6DD (K31E)
2206' FSL & 1433' FWL

SHIDELER FEE 31-8C (K31E)
2194' FSL & 1432' FWL

SHIDELER FEE 31-6D (K31E)
2195' FSL & 1420' FWL

SHIDELER FEE 31-11A (K31E)
2184' FSL & 1419' FWL

SHIDELER FEE 31-5BB (K31E)
2185' FSL & 1408' FWL

SHIDELER FEE 31-9B (K31E)
2173' FSL & 1406' FWL

SHIDELER FEE 31-5C (K31E)
2174' FSL & 1395' FWL

SHIDELER FEE 31-9BB (K31E)
2163' FSL & 1394' FWL

SHIDELER FEE 31-5CC (K31E)
2163' FSL & 1382' FWL

BOTTOM HOLE FOOTAGES

SHIDELER FEE 31-8B (K31E)
1633' FNL & 1051' FEL

SHIDELER FEE 31-6DD (K31E)
2535' FNL & 1929' FEL

SHIDELER FEE 31-8C (K31E)
2153' FNL & 687' FEL

SHIDELER FEE 31-6D (K31E)
2180' FNL & 1886' FWL

SHIDELER FEE 31-11A (K31E)
2304' FSL & 2004' FWL

SHIDELER FEE 31-5BB (K31E)
1862' FNL & 116' FWL

SHIDELER FEE 31-9B (K31E)
2334' FSL & 596' FEL

SHIDELER FEE 31-5C (K31E)
2190' FNL & 165' FWL

SHIDELER FEE 31-9BB (K31E)
2017' FSL & 539' FEL

SHIDELER FEE 31-5CC (K31E)
2552' FNL & 154' FWL

RELATIVE COORDINATES From top hole to bottom hole

WELL	NORTH	EAST
31-8B	1381'	1781'
31-6DD	459'	491'
31-8C	887'	2154'
31-6D	824'	456'
31-11A	127'	584'
31-5BB	1127'	-1305'
31-9B	189'	2266'
31-5C	811'	-1240'
31-9BB	2333'	-116'
31-5CC	459'	-1234'

LATITUDE & LONGITUDE Surface position of Wells (NAD 83)

WELL	LATITUDE	LONGITUDE
31-8B	39.401815°	107.708901°
31-6DD	39.401817°	107.708941°
31-8C	39.401785°	107.708945°
31-6D	39.401787°	107.708985°
31-11A	39.401756°	107.708989°
31-5BB	39.401758°	107.709030°
31-9B	39.401726°	107.709034°
31-5C	39.401728°	107.709074°
31-9BB	39.401697°	107.709078°
31-5CC	39.401699°	107.709119°

LATITUDE & LONGITUDE Bottom hole position of Wells (NAD 83)

WELL	LATITUDE	LONGITUDE
31-8B	39.405599°	107.702599°
31-6DD	39.403075°	107.707207°
31-8C	39.404186°	107.701325°
31-6D	39.404047°	107.707373°
31-11A	39.402102°	107.706927°
31-5BB	39.404854°	107.713646°
31-9B	39.402239°	107.701021°
31-5C	39.403955°	107.713460°
31-9BB	39.401371°	107.700828°
31-5CC	39.402961°	107.713485°

SURVEYED BY: C.D.S. DATE SURVEYED: 11-13-10
DRAWN BY: M.W. DATE DRAWN: 11-22-11
SCALE: 1" = 100' REVISED: M.W. - 01-13-12

Tri State (435) 781-2501
Land Surveying, Inc.
180 NORTH VERNAL AVE. VERNAL, UTAH 84078

SHEET
3b
OF 11