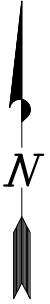
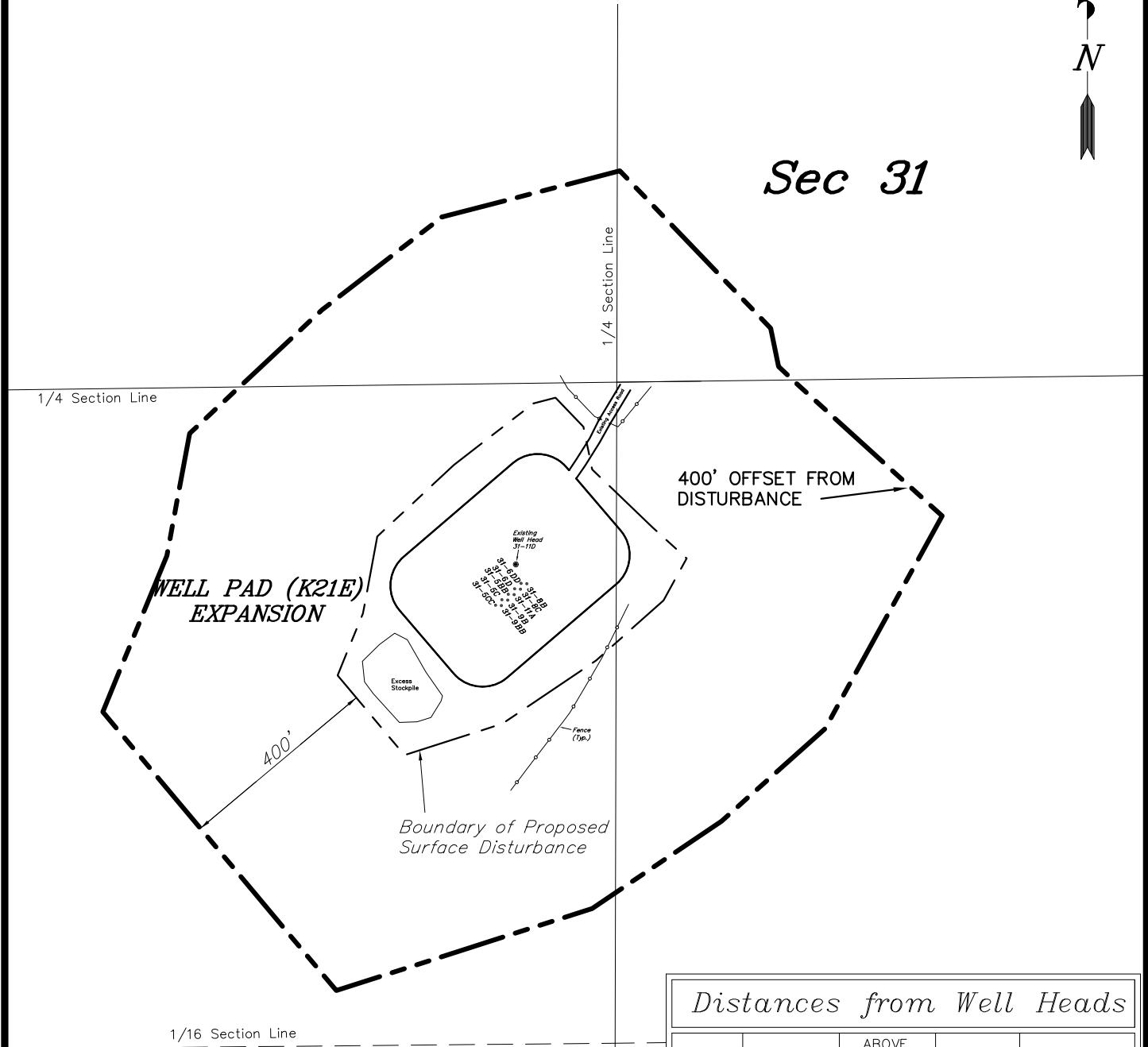


# ENCANA OIL & GAS (USA) INC

## SURFACE DISTURBANCE AREA WELL PAD (K31E) EXPANSION Section 31, T7S, R92W, 6th P.M.



**Sec 31**



### Distances from Well Heads

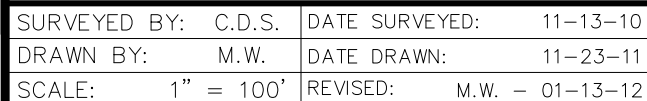
WELL	BUILDING	ABOVE GROUND UTILITY	PUBLIC ROAD	RAILROAD
31-8D	5,305'	5,305'	5,305'	9.42 MILES
31-6DD	5,305'	5,305'	5,305'	9.42 MILES
31-8C	5,316'	5,316'	5,316'	9.42 MILES
31-6D	5,316'	5,316'	5,316'	9.42 MILES
31-11A	5,328'	5,328'	5,328'	9.42 MILES
31-5BB	5,328'	5,328'	5,328'	9.42 MILES
31-9B	5,339'	5,339'	5,339'	9.42 MILES
31-5C	5,339'	5,339'	5,339'	9.42 MILES
31-9BB	5,351'	5,351'	5,351'	9.42 MILES
31-5CC	5,351'	5,351'	5,351'	9.42 MILES

SURVEYED BY: C.D.S. DATE SURVEYED: 11-13-10  
DRAWN BY: M.W. DATE DRAWN: 11-22-11  
SCALE: 1" = 100' REVISED: M.W. - 01-13-12




**Tri State** (435) 781-2501  
Land Surveying, Inc.  
180 NORTH VERNAL AVE. VERNAL, UTAH 84078

**SHEET**  
**2k**  
**OF 11**

CROSS SECTIONS  
WELL PAD (K31E) EXPANSION  
Section 31, T7S, R92W, 6th P.M.



**LEGEND:**

PARI = PAD/ACCESS ROAD INTERFACE  
SR = SEDIMENT RESERVOIR  
ST = SEDIMENT TRAP  
R.O.P. = RUN-ON PROTECTION  
 = PERIMETER CONTROL (WATTLES)  
CDM = CHECK DAM  
FCD = FLOW CONTROL DITCH  
ECB = EROSION CONTROL BLANKET  
D = FILL DIVERSION TO SEDIMENT TRAP  
CSD = CUT SLOPE DIVERSION (BERM TOE OF CUT SLOPE)  
VGB = VEGETATION BUFFER (UNDISTURBED LAND INSIDE PC)  
 = SEED, ECB & FLEX  
 = LEVFI, SPRFADFR

**Tri State** (435) 781-2  
Land Surveying, Inc.  
180 NORTH VERNAL AVE. VERNAL, UTAH 84078

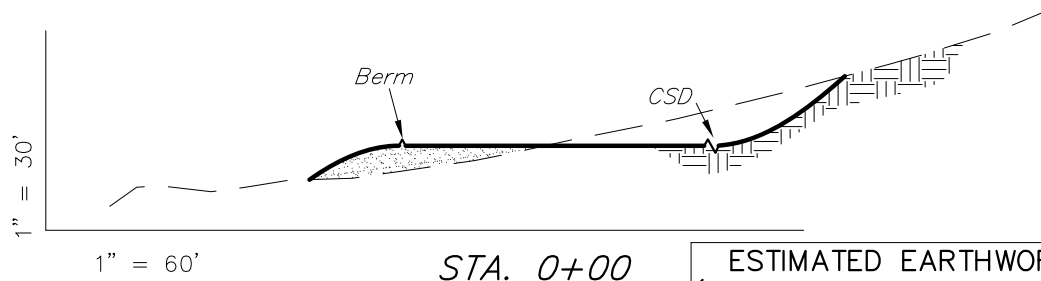
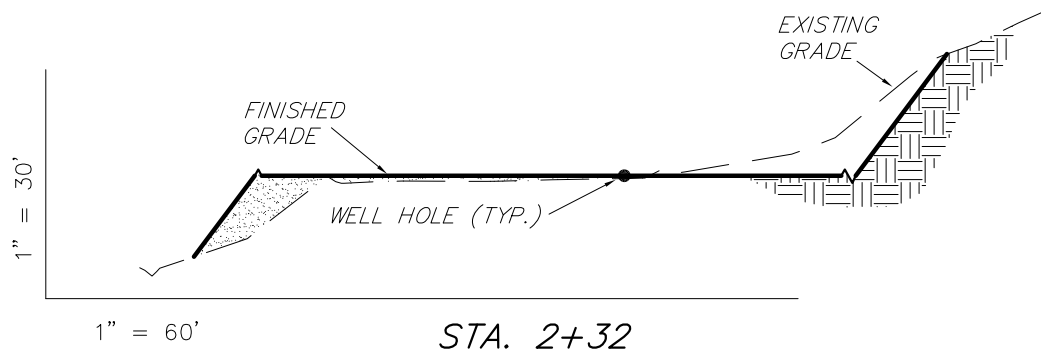
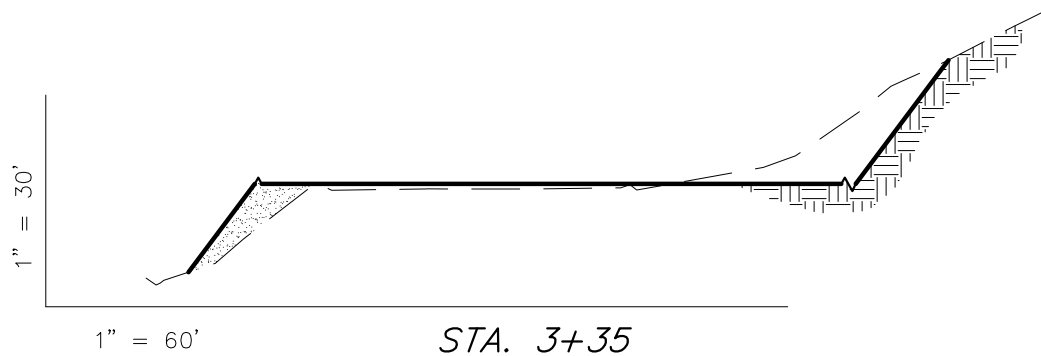
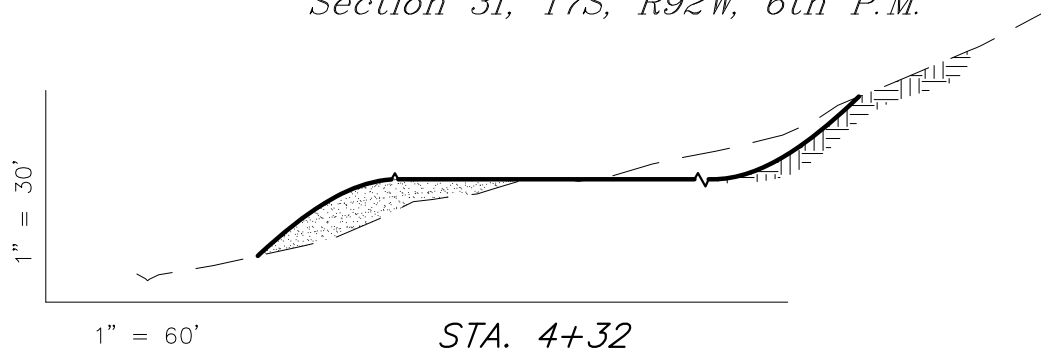
SHEET  
4  
OF 11

# ENCANA OIL & GAS (USA) INC

## CROSS SECTIONS

### WELL PAD (K31E) EXPANSION

Section 31, T7S, R92W, 6th P.M.



NOTE:  
UNLESS OTHERWISE NOTED  
CUT SLOPES ARE AT 1:1  
FILL SLOPES ARE AT 1.5:1

#### ESTIMATED EARTHWORK QUANTITIES (No Shrink or swell adjustments have been used) (Expressed in Cubic Yards)

ITEM	CUT	FILL	6" TOPSOIL	EXCESS
PAD	1,850	0	Topsoil is not included in Pad Cut	1,850
PIT	N/A	N/A		N/A
TOTALS	1,850	0	3,120	1,850

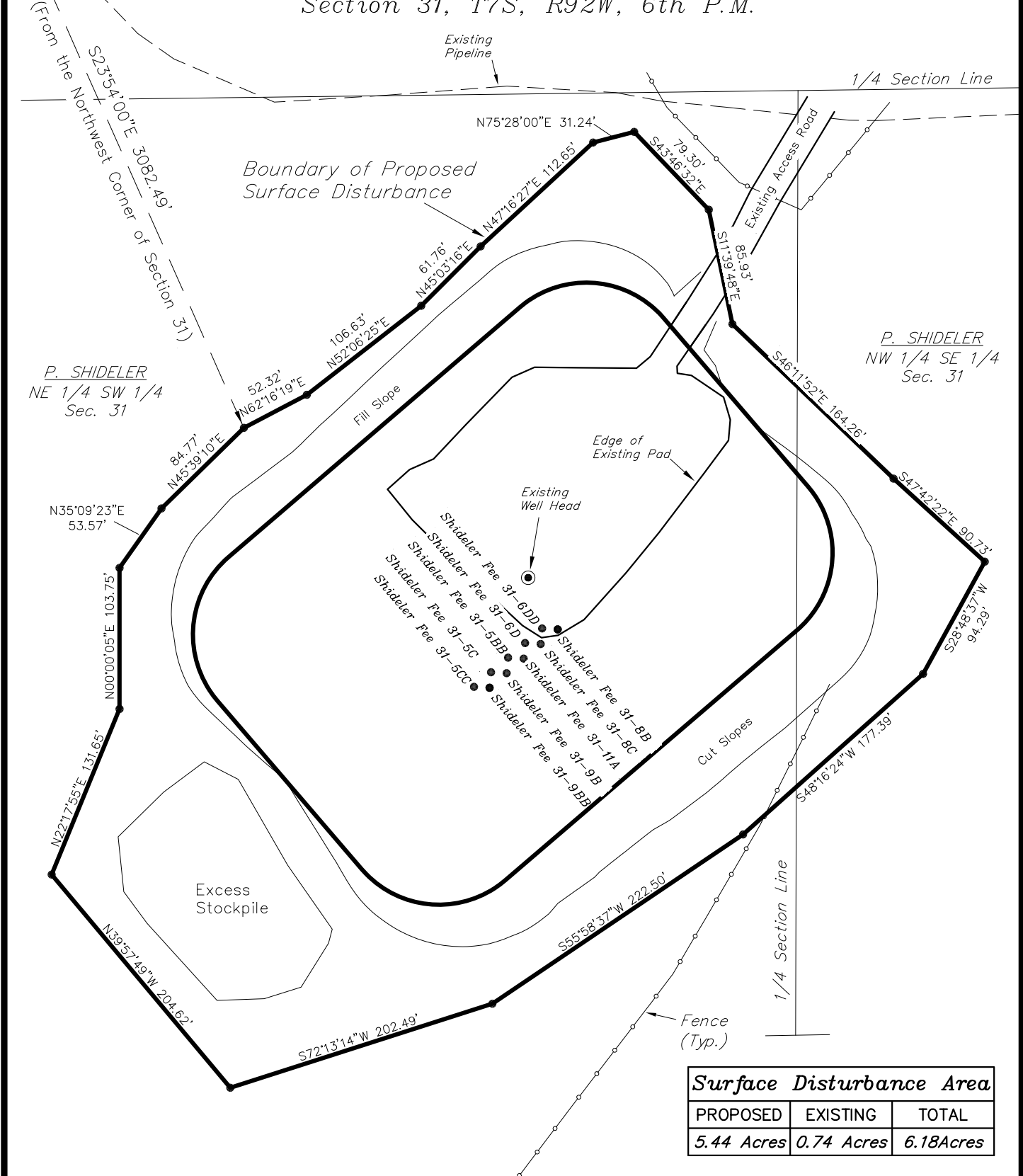
SURVEYED BY: C.D.S. DATE SURVEYED: 11-13-10  
DRAWN BY: M.W. DATE DRAWN: 11-23-11  
SCALE: 1" = 100' REVISED: M.W. - 01-13-12

**Tri State** (435) 781-2501  
Land Surveying, Inc.  
180 NORTH VERNAL AVE. VERNAL, UTAH 84078

SHEET  
**5**  
OF 11

# ENCANA OIL & GAS (USA) INC

## SURFACE DISTURBANCE AREA WELL PAD (K31E) EXPANSION Section 31, T7S, R92W, 6th P.M.



SURVEYED BY: C.D.S. DATE SURVEYED: 11-13-10  
 DRAWN BY: M.W. DATE DRAWN: 11-22-11  
 SCALE: 1" = 100' REVISED: M.W. - 01-13-12

**Tri State**  
 Land Surveying, Inc.  
 180 NORTH VERNAL AVE. VERNAL, UTAH 84078  
 (435) 781-2501

SHEET  
 8  
 OF 11