

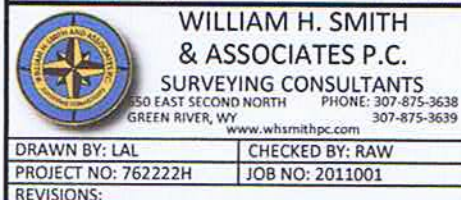
SURFACE HOLE LOCATION				BOTTOM HOLE LOCATION					
GEOGRAPHIC DEC. DEG.	LAT.	40.553272°			GEOGRAPHIC DEC. DEG.	LAT.	40.565549°		
	LONG.	104.310667°				LONG.	104.310310°		
	LAT.	40.553290°				LAT.	40.565566°		
	LONG.	104.310161°				LONG.	104.309804°		
	LAT.	40°33'11.78"				LAT.	40°33'55.98"		
	LONG.	104°18'38.40"				LONG.	104°18'37.12"		
STATE PLANE CO. NORTH	LAT.	40°33'11.84"			STATE PLANE CO. NORTH	LAT.	40°33'56.04"		
	LONG.	104°18'36.58"				LONG.	104°18'35.29"		
	NORTH	1446614.37				NORTH	1451087.77		
	EAST	3330482.63				EAST	3330521.95		
STATE PLANE CO. NORTH	NORTH	446614.66			STATE PLANE CO. NORTH	NORTH	451087.97		
	EAST	2330632.04				EAST	2330671.32		
FOOTAGE: 1911' FWL - 320' FSL				FOOTAGE: 1987' FWL - 470' FNL					
MEASURE DATE		INSTRUMENT OPERATOR		PDOP		SHL GRND ELEV.			
01/27/2012		ALLEN BLATTEL		1.6		4917.1			

I, Rodney A. Walters, Professional Land Surveyor, CO. PLS # 16847 hereby certify that (in accordance with a request from Erin Bibeau with Marathon Oil Co, 5555 San Felipe, Houston, TX 77056) I and or personnel under my direction made a survey on the 27th day of January 2012, for the Surface Hole Location and Elevation of Marathon Oil Co. CROW VALLEY 7-62-22-2H being located the SE 1/4 of the SW 1/4, Section 22, T7N, R62W and the Bottom Hole Location being located in the NE1/4 of the NW1/4 of Section 22, T7N, R62W, both being of the 6th P.M., Weld County, State of Colorado.

- All bearings and distances are GRID, based on the Colorado State Plane Coordinate System, North Zone, North American Datum 1983 from GPS observations occupying a WHS control point (5/8" rebar) and having the Location and Elevation derived from an Opus Solution.
- Vertical Datum used is of NAVD 88.
- Record Bearings and Distances as shown are based on the General Land Office Survey plat approved on the 16th day of December 1872.



CONFIDENTIALITY NOTES:
The information contained in this plat is legally privileged and confidential information intended only for the use of the recipients. If you are not the intended recipients, you are hereby notified that any use, dissemination, distribution or copying of this information is strictly prohibited.



LEGEND

- ☒ FOUND OR SET CORNER
- ☒ CALCULATED CORNER
- ☐ NOTHING FOUND

LOCATION:

CROW VALLEY 7-62-22-2H
WITHIN THE SE/4 SW/4
SECTION 22,
T 7 N, R 62 W,
6TH PM.
WELD COUNTY,
COLORADO

MARATHON OIL COMPANY

PO BOX 3128, HOUSTON TX, 77253
5555 SAN FELIPE, HOUSTON TX, 77056

WELL LOCATION PLAT

SCALE: 1"=1000'	EXHIBIT "A"
DATE: 02/02/2012	SHEET 1 OF 1