

T7N, R91W, 6th P.M.

AXIA ENERGY

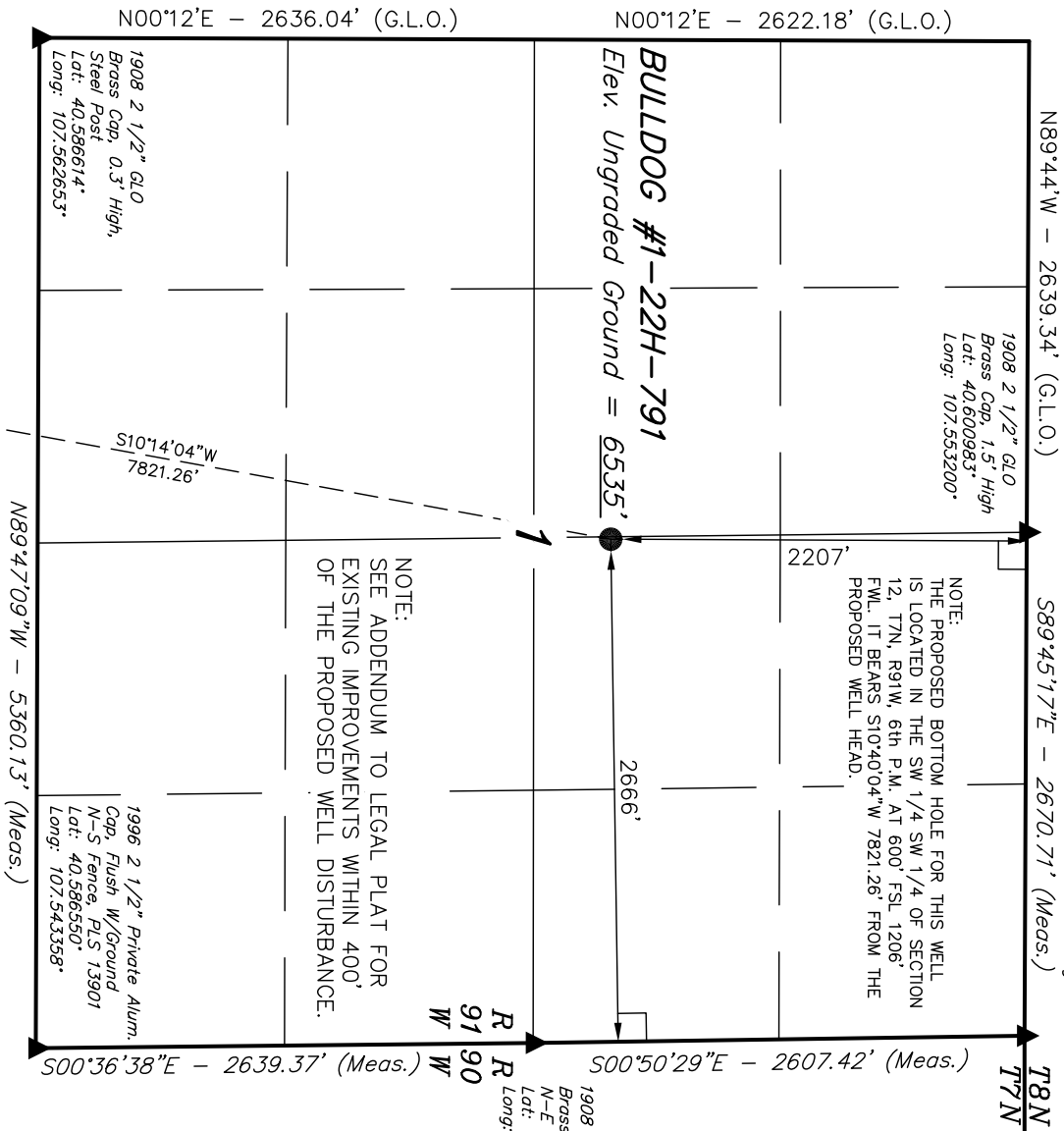
Well location, BULLDOG #1-22H-791 (SURFACE LOCATION) located as shown in the SW 1/4 NE 1/4 of Section 1, T7N, R91W, 6th P.M., Moffat County, Colorado.

BASIS OF ELEVATION

SPOT ELEVATION LOCATED AT THE SOUTHWEST CORNER OF SECTION 15, T7N, R91W, 6th P.M. TAKEN FROM THE CRAIG QUADRANGLE, COLORADO, MOFFAT COUNTY, 7.5 MINUTE QUAD (TOPOGRAPHIC MAP) PUBLISHED BY THE UNITED STATES DEPARTMENT OF THE INTERIOR, GEOLOGICAL SURVEY. SAID ELEVATION IS MARKED AS BEING 6672 FEET.

BASIS OF BEARINGS

BASIS OF BEARINGS IS A G.P.S. OBSERVATION.



CERTIFICATE

THIS IS TO CERTIFY THAT THE ABOVE PLAT WAS PREPARED FROM FIELD NOTES OF ACTUAL SURVEYS MADE BY ME OR UNDER MY SUPERVISION AND THAT THE SAME ARE TRUE AND CORRECT TO THE BEST OF MY KNOWLEDGE AND BELIEF.

REGISTERED LAND SURVEYOR
REGISTRATION NO. 1466173
STATE OF COLORADO

REVISED: 03-12-12

UTIAH ENGINEERING & LAND SURVEYING
85 SOUTH 200 EAST - VERNAL, UTAH 84078
(435) 789-1017

SCALE 1" = 1000'
DATE SURVEYED: 02-06-12
DATE DRAWN: 02-13-12

PARTY B.H. N.F. Z.L.
REFERENCES G.L.O. PLAT

WEATHER COLD
FILE AXIA ENERGY

LEGEND:

- 90° SYMBOL
- PROPOSED WELL HEAD.
- SECTION CORNERS LOCATED.

TTN, R91W, 6th P.M.

BULLDOG #1-22H-791
Surface Location

N89°47'09"W - 5360.13' (Meas.)

1908 2 1/2" GLO
Brass Cap, 0.3' High,
Steel Post
Lat: 40.586614°
Long: 107.562525°

S10°14'04"W
7821.26'

1996 2 1/2" Private Alum.
Cap, Flush W/Ground
N-S Fence, PLS 13901
Lat: 40.586550°
Long: 107.543358°

1908 3 1/2" GLO
Brass Cap, 1.1' High,
NW-SE Fence
Lat: 40.579308°
Long: 107.543267°

1908 2 1/2" GLO
Brass Cap, 1.7' High,
N-S Fence
Lat: 40.579403°
Long: 107.562525°

NOTE:
THE PROPOSED BOTTOM HOLE BEARS S10°14'04"W
7821.26' FROM THE PROPOSED WELL HEAD WHICH
IS LOCATED IN SW 1/4 NE 1/4 OF SECTION 1,
TTN, R91W, 6th P.M. AT 2207' FNL 2666' FEL.

1206'

Bottom
Hole
2005 3 1/4" Private
Alum. Cap, 0.3' High,
E-W Fence
Lat: 40.572161°
Long: 107.557678°

1908 3 1/2" GLO
Brass Cap, 0.9' High,
Fence Corner
Lat: 40.572131°
Long: 107.552956°

1908 3 1/2" GLO
Brass Cap, 0.8' High
Lat: 40.572078°
Long: 107.543144°

S89°33'57"E -
1312.72' (Meas.)

S89°32'47"E -
1312.62' (Meas.)

S89°38'03"E - 2726.63' (Meas.)

1908 2 1/2" GLO
Brass Cap, 1.0' High,
Fence Corner
Lat: 40.572189°
Long: 107.562403°

LEGEND:

90° SYMBOL

PROPOSED WELL HEAD.

SECTION CORNERS LOCATED.

AXIA ENERGY

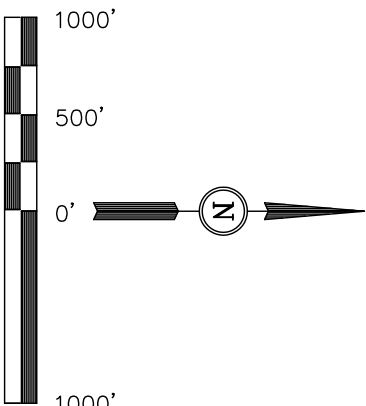
Well location, BULLDOG #1-22H-791 (TARGET
BOTTOM HOLE) located as shown in the SW 1/4
SW 1/4 of Section 12, T7N, R91W, 6th P.M.,
Moffat County, Colorado.

BASIS OF ELEVATION

SPOT ELEVATION LOCATED AT THE SOUTHWEST CORNER OF
SECTION 15, T7N, R91W, 6th P.M. TAKEN FROM THE CRAIG
QUADRANGLE, COLORADO, MOFFAT COUNTY, 7.5 MINUTE QUAD
(TOPOGRAPHIC MAP) PUBLISHED BY THE UNITED STATES
DEPARTMENT OF THE INTERIOR, GEOLOGICAL SURVEY. SAID
ELEVATION IS MARKED AS BEING 6672 FEET.

BASIS OF BEARINGS

BASIS OF BEARINGS IS A G.P.S. OBSERVATION.



SCALE
CERTIFICATE

THIS IS TO CERTIFY THAT THE ABOVE PLAT WAS PREPARED FROM
FIELD NOTES OF ACTUAL SURVEYS MADE BY ME OR UNDER MY
SUPERVISION AND THAT THE SAME ARE TRUE AND CORRECT TO THE
BEST OF MY KNOWLEDGE AND BELIEF.

REGISTERED LAND SURVEYOR
REGISTRATION NUMBER 1992
STATE OF COLORADO
03-26-12

REVISED: 03-12-12

UINTAH ENGINEERING & LAND SURVEYING
85 SOUTH 200 EAST - VERNAL, UTAH 84078
(435) 789-1017

NAD 83 (TARGET BOTTOM HOLE)
LATITUDE = 40°34'25.71" (40.573808)
LONGITUDE = 107°33'29.12" (107.558089)
NAD 27 (TARGET BOTTOM HOLE)
LATITUDE = 40°34'25.82" (40.573839)
LONGITUDE = 107°33'26.88" (107.557467)
STATE PLANE NAD 83
N: 1458513.98 E: 2428321.86
STATE PLANE NAD 27
N: 458512.79 E: 1428479.47

SCALE	DATE SURVEYED:	DATE DRAWN:
1" = 1000'	02-06-12	02-13-12
PARTY	REFERENCES	
B.H. N.F. Z.L.	G.L.O. PLAT	
WEATHER	FILE	
COLD	AXIA ENERGY	